

AMERICAN HEREFORD ASSOCIATION
2024 AI BOOK



SHF LEGION H315 L060 {DLF,HYF,IEF,MSUDF,MDF,DBF}



P44442417

Calved: 1/31/2023 - Tattoo: BE L060

CE	12.1	MM	44	FAT	0.102
BW	0.7	M&G	83	REA	0.91
WW	77	MCE	4.5	MARB	0.45
YW	118	MCW	106	BMI\$	475
DMI	0.9	UDDR	1.40	BIIS	593
SC	2.3	TEAT	1.50	CHBS	174
SCF	21.5	CW	101		



SEMEN: \$40/Straw; \$60/Certificate

SHF DAYBREAK Y02 D287 ET {CHB}{DLF,HYF,IEF,MSUDF}
SHF HEADSTRONG D287 H315 ET {CHB}{DLF,HYF,IEF,MSUDF,MDF,DBF}
 P44123822 SHF OKSANA 001A D03 ET {DLF,HYF,IEF,DBP}

JW B716 DEVOUT 18051 {CHB}{DLF,HYF,IEF}
SHF CHEER 051 J175 {DLF,HYF,IEF,MSUDF,DBP}
 P44228340 SHF CHEER C95 E064 {DLF,HYF,IEF,DBP}

HOMOZYGOUS POLLED

- Legion is a unique spread bull, as he is in the top of the breed for CED, Growth, Maternal and Carcass Merit.
- His dam and granddam have scored perfect udder scores each year.
- Sells as Lot 1 in our March 23, 2024 sale.

SHF LIBERTY H028 L356 ET {DBP}



P44442622

Calved: 2/26/2023 - Tattoo: BE L356

CE	6.6	MM	24	FAT	0.082
BW	0.8	M&G	55	REA	0.57
WW	62	MCE	4.0	MARB	0.70
YW	101	MCW	102	BMI\$	456
DMI	0.5	UDDR	1.50	BIIS	577
SC	1.3	TEAT	1.50	CHBS	178
SCF	20.8	CW	80		



SEMEN: \$40/Straw; \$60/Certificate

SHF FORESIGHT B413 F158 {CHB}{DLF,HYF,IEF,MDF,DBF}
SHF HAVILAND F158 H028 {CHB}{DLF,HYF,IEF,MSUDF,MDF,DBF}
 P44123599 SHF MAGGIE Z311 F327 ET {DLF,HYF,IEF,MSUDF,DBP}

SHF DAYBREAK Y02 D287 ET {CHB}{DLF,HYF,IEF,MSUDF}
SHF LACY D287 C313 ET {DLF,HYF,IEF,MSUDF,DBP}
 P44003548 SHF LACY A70 MISS C252 {DLF,HYF,IEF,MSUDF,DBP}

- If you are looking for a homozygous polled, dark, conservative marked bull that will be flexible enough for heifers, add performance to cows, maternal strength to your replacements and superior carcass traits, study this bull.
- Pedigree is full of NSRP tested bulls, every bull in his four-generation pedigree has been tested. He is reliable.
- Sells as lot 2 in our March 23, 2024 sale.



Kevin and Vera Schultz
 Tyler and Hannah Schultz
 Haviland, KS 67059
 Kevin cell 620-546-4570 • kevin@sandhillfarms.com
 Tyler cell 620-546-1574
www.sandhillfarms.com

Make plans to attend:
Sandhill Farms Spring Production Sale
March 23, 2024
Haviland, Kansas

Request a catalog by contacting
Kevin or Tyler Schultz!



SHF HAVILAND F158 H028 {CHB}{DLF,HYF,IEF,MSUDF,MDF,DBF}

P44123599

Calved: 1/30/2020 - Tattoo: BE H028

EFBEEF BR VALIDATED B413 {CHB}{DLF,HYF,IEF,MSUDF,MDF,DBF}

SHF FORESIGHT B413 F158 {CHB}{DLF,HYF,IEF,MDF,DBF}

P43894968

SHF GERBER R117 Y200 {DLF,HYF,IEF}

KCF BENNETT ENCORE Z311 ET {SOD}{CHB}{DLF,HYF,IEF,MSUDF,MDF,DBF}

SHF MAGGIE Z311 F327 ET {DLF,HYF,IEF,MSUDF,DBP}

P43986673

SHF MAGGIE T57 W105 {DLF,HYF,IEF,MSUDF,DBP}

CE	7.4	MM	21	FAT	0.072
BW	0.0	M&G	52	REA	0.60
WW	62	MCE	6.2	MARB	1.03
YW	103	MCW	81	BMIS	523
DMI	0.4	UDDR	1.40	BIIS	667
SC	1.1	TEAT	1.50	CHBS	228
SCF	23.3	CW	89		



SEMEN: \$40/Straw; \$60/Certificate

- Haviland is a proven sire that takes “balanced” to elite levels. No bull can match his levels for IMF, BMI and CHB. To complement that, he is still a breed leader for CED.
- We have never used a bull that added more carcass value than Haviland. Some have graded high Prime.
- The daughters are showing the udder quality and maternal traits that complete the circle.
- Pigmented, homo polled and free of all known defects.



SHF LACY H028 K018
Daughter of SHF HAVILAND F158 H028



Kevin and Vera Schultz
Tyler and Hannah Schultz
Haviland, KS 67059
Kevin cell 620-546-4570 - kevin@sandhillfarms.com
Tyler cell 620-546-1574

www.sandhillfarms.com



HEREFORD RANCH

Steven, Jill, Nicole, Curtis, Alison and Austin Folkman
N250 Highview Rd.
Ixonia, WI 53036
Steve cell 262-617-6346
cnlfarm@hughes.net

www.cnlfarm.com



3752 Ollie Bell Rd.
Benton, WI 53803
Kevin Bennett • 608-778-8685
Stacy Holtzan • 608-732-3685
sandrockrancheherefords@gmail.com

www.sandrockrancheherefords.com



BIRDWELL LONG RUN 7098 1665 ET {DLF,HYF,IEF,MSUDF,MDF,DBF}

P44298368

Calved: 2/25/2021 - Tattoo: BE 1665

CHURCHILL SENSATION 028X {SOD}{DLF,HYF,IEF,MDF,DBF}

NJW LONG HAUL 36E ET {DLF,HYF,IEF,MSUDF,MDF,DBF}

P43829326 NJW 79Z 10W RITA 11B {DLF,HYF,IEF,MSUDF,MDF}

EFBEEF BR VALIDATED B413 {CHB}{DLF,HYF,IEF,MSUDF,MDF,DBF}

BR VALIDATED B413 6035 7098 {DLF,HYF,IEF,MDF,DBF}

P43857421 BR BENNETT 4R Y428 2101 6035 {HYP,DBP}

CE	14.5	MM	48	FAT	0.012
BW	-1.1	M&G	77	REA	0.97
WW	59	MCE	11.3	MARB	0.43
YW	86	MCW	70	BMIS	609
DMI	0.2	UDDR	1.50	BIIS	712
SC	1.2	TEAT	1.50	CHBS	166
SCF	30.8	CW	79		



SEMEN: \$50/Straw; \$75/Certificate

- Long Run can be used as a Calving Ease sire and added maternal traits. He ranks in the top 1% for Sustained Cow Fertility, and both Maternal indexes.
- Study his pedigree, and you will see it runs deep with maternal, 7098 and Long Haul
- Homozygous polled and free of all known defects.
- Long Run is the 7098 son that is being used to create beautiful replacement females, while keeping calving ease and carcass traits in the bulls.



BR VALIDATED B413 6035 7098

Dam of BIRDWELL LONG RUN 7098 1665 ET



Kevin and Vera Schultz
Tyler and Hannah Schultz
Haviland, KS 67059
Kevin cell 620-546-4570 - kevin@sandhillfarms.com
Tyler cell 620-546-1574
www.sandhillfarms.com



Fletcher, OK
Jim Birdwell 580-695-2352
Joel Birdwell 405-368-1058



SHF HARVEST D287 H033 ET {CHB}{DLF,HYF,IEF,MSUDF,MDF}

P44123604

Calved: 2/1/2020 - Tattoo: BE H033

SHF YORK 19H Y02 {SOD}{CHB}{DLF,HYF,IEF}
SHF DAYBREAK Y02 D287 ET {CHB}{DLF,HYF,IEF,MSUDF}
 P43676330 SHF MISS M326 T08 ET {DLF,HYF,IEF}

GERBER ANODYNE 001A {SOD}{CHB}{DLF,HYF,IEF,MSUDF}
SHF TIME 001A D81 {DLF,HYF,IEF,MDF,DBF}
 P43676395 SHF TIME 42X A140 {DLF,HYF,IEF,MSUDF}

CE	6.6	MM	37	FAT	0.061
BW	-0.1	M&G	70	REA	0.75
WW	66	MCE	6.2	MARB	0.40
YW	117	MCW	108	BMIS	378
DMI	0.5	UDDR	1.40	BIIS	478
SC	1.6	TEAT	1.50	CHBS	180
SCF	14.7	CW	95		



SEMEN: \$40/Straw; \$75/Certificate

- Harvest H033 is short marked, moderate in frame, stout in structure and thick with well-balanced individual performance with eye appeal and added carcass merit. Backed by an outstanding cow family, Harvest's maternal sister is in the donor program at Sandhill Farms and his dam was the high selling female in the Sandhill sale in 2021 to Baumgarten Cattle Co. in North Dakota.
- A true herd bull that offers phenotype and genotype to match. Top 1% for Carcass Weight/CHB, Top 5% for YW/Milk/M&G/Teat/Marbling, and Top 10% for BW/SC/MCE/Udder/REA
- Harvest has reported calving ease, growth, added carcass, and the adaptability to produce progeny that work in registered and commercial cow herds across the U.S. Harvest sons sold in multiple 2023 seed stock production sales across the country exhibiting numerous sale toppers.
- As of 2/1/24, both Sidwell Ranch and Frank Herefords have Harvest daughters in production exhibiting tight/level udders with quality milk flow.



SHF TIME 001A D81
 Dam of SHF HARVEST D287 H033 ET



SIDWELL RANCH
 186 Rapelje Rd.
 Columbus, MT 59019
 Richard Sidwell 406-861-4426
 Becky Sidwell 406-670-4227



FRANK HEREFORDS
 Austin Frank 307-631-6012
 2210 Hwy. 78
 Roscoe, MT 59071
 arffrank@yahoo.com

Kevin and Vera Schultz
 Tyler and Hannah Schultz
 Haviland, KS 67059
 Kevin cell 620-546-4570
 kevin@sandhillfarms.com
 Tyler cell 620-546-1574
www.sandhillfarms.com

KNOLL CREST

CELEBRATING **80** Years
1944-2024



KCF BENNETT MONUMENT J338 (DLF, HYF, IEF, MSUDF, MDF, DBF)

P44320126 - Calved: 9/10/2021 - Tattoo: RE J338

KCF BENNETT DEVOUT B716 ET (DLF, HYF, IEF, MDF, DBF)

KCF BENNETT B716 F597 (CHB) (DLF, HYF, IEF, MSUDF, MDF, DBF)

P43983894

KCF MISS REVOLUTION X322 ET (DOD) (DLF, HYF, IEF, MSUDF, MDF, DBF)

R LANDMARK 4386 (CHB) (DLF, HYF, IEF, MSUDC, MDF, DBF)

KCF MISS LANDMARK G301 (DLF, HYF, IEF, MSUDF, MDF, DBF)

P44105051

KCF MISS CUDA E368 (DLF, HYF, IEF)



SEMEN:

\$50/straw; \$60/certificate

CONTACT:

Knoll Crest Farm 434-376-3567

CE	BW	WW	YW	DMI	SC	SCF	MM	M&G	MCE	MCW	UDDR	TEAT	CW	FAT	REA	MARB	BMS	BIIS	CHBS
14.7	-2.5	64	105	1.1	1.2	25.3	47	79	12.0	49	1.30	1.40	98	0.052	0.74	0.60	521	639	183
2%	2%	18%	15%		29%	2%	1%	1%	1%	3%	23%	11%	1%		7%	1%	1%	1%	1%

HOMOZYGOUS POLLED!

- ★ 100% eye pigmentation, short marked, dark red
- ★ His early birth weight and calving ease reports are outstanding.
- ★ Monument was the standout performer in his contemporary group, posting a 96 BWR, 119 WWR and 115 YWR. He is massively constructed, easy fleshing and athletic.

- ★ Monument is being utilized in many of the top herds in America.
- ★ No animal in the Hereford population comes close to matching his unique combination of calving ease, growth, SCF, MCW, REA and Marbling.
- ★ In addition, he ranks top 1% for all index values and has the distinction of ranking in the top 1% CW yet smallest 3% MCW.



KCF MISS LANDMARK G301

- ★ The dam of Monument J338. An interest in G301 recently sold to Stellpflug Cattle Co. No other female in the breed comes close to matching her combination of calving ease, growth, MCW, udder traits, REA, marbling and index values.

P.O. Box 117, Red House, VA 23963
Martha Johnson,
Office Manager (434) 376-3567
knollcrest@knollcrestfarm.com
www.knollcrestfarm.com

Paul S. Bennett
(434) 941-8245
Dalton G. Bennett
(434) 664-7946



Jim G. Bennett
(434) 664-7935
Brian R. Bennett
(434) 664-8309
Scott R. Bennett
(434) 660-7268

EST FARM

CELEBRATING **80** Years
1944-2024



SHF HEADSTRONG D287 H315 ET (CHB) {DLF,HYF,IEF,MSUDF,MDF,DBF}

P44123822 - Calved: 2/10/2020 - Tattoo: BE H315

SHF YORK 19H Y02 (SOD) {CHB} {DLF,HYF,IEF}

SHF DAYBREAK Y02 D287 ET (CHB) {DLF,HYF,IEF,MSUDF}

P43676330

SHF MISS M326 T08 ET (DLF,HYF,IEF)

GERBER ANODYNE 001A (SOD) {CHB} {DLF,HYF,IEF,MSUDF}

SHF OKSANA 001A D03 ET (DLF,HYF,IEF,DBP)

P43676150

SHF OKSANA 33T Y59 (DLF,HYF,IEF,DBP)



SEMEN:

\$40/straw; \$50/certificate

CONTACT:

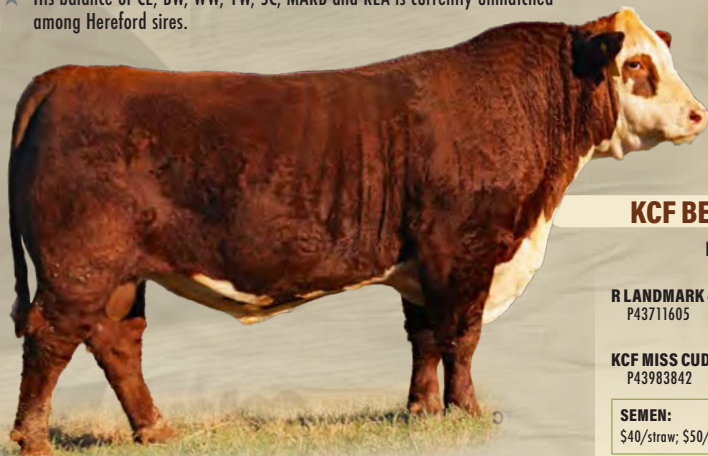
Knoll Crest Farm 434-376-3567

CE	BW	WW	YW	DMI	SC	SCF	MM	M&G	MCE	MCW	UDDR	TEAT	CW	FAT	REA	MARB	BMI\$	BIIS	CHBS
5.7	2.3	82	125	1.2	2.4	18.4	33	74	0.3	125	1.30	1.40	103	0.012	1.00	0.39	431	546	174
29%	39%	1%	1%		1%	33%	15%	2%	73%		23%	11%	1%	29%	1%	5%	12%	6%	2%

HOMOZYGOUS POLLED!

- ★ Headstrong is a moderate statured, perfect footed, easy fleshing bull whose early progeny data indicate both calving ease potential and accelerated early growth.
- ★ His balance of CE, BW, WW, YW, SC, MARB and REA is currently unmatched among Hereford sires.

- ★ Headstrong's dam is one of the breed's most prolific herd sire producing females in recent history.
- ★ Owned with Sandhill Farms



KCF BENNETT BEDROCK H642 (DLF,HYF,IEF,MSUDF,MDF,DBF)

P44250089 - Calved: 10/18/2020 - Tattoo: RE H642

HYALITE ON TARGET 936 (SOD) {CHB} {DLF,HYF,IEF,MSUDC}

R LANDMARK 4386 (CHB) {DLF,HYF,IEF,MSUDC,MDF,DBF}

P43711605

R MISS REVOLUTION 3032 (DOD) {DLF,HYF,IEF,MSUDF,MDF,DBF}

BEHM 100W CUDA 504C (CHB) {DLF,HYF,IEF,MSUDF,MDF,DBF}

KCF MISS CUDA F565 (DLF,HYF,IEF,MSUDF,DBP)

P43983842

KCF MISS 2107 B629 (DOD) {DLF,HYF,IEF,DBP}



SEMEN:

\$40/straw; \$50/certificate

CONTACT:

Knoll Crest Farm 434-376-3567

CE	BW	WW	YW	DMI	SC	SCF	MM	M&G	MCE	MCW	UDDR	TEAT	CW	FAT	REA	MARB	BMI\$	BIIS	CHBS
11.1	0.3	80	121	1.4	1.4	16.4	46	86	9.8	88	1.30	1.30	90	0.052	0.85	0.37	373	485	144
5%	9%	1%	2%		13%		1%	1%	1%	48%	23%	30%	4%		3%	6%	41%	23%	11%

HOMOZYGOUS POLLED!

- ★ Dark red with extreme pigmentation.
- ★ Bedrock was a feature of his calf crop and is seeing heavy use at both Paul and Bette Slayton's and Knoll Crest.

- ★ His young dam is a powerful cow who descends from four straight generations of Dams of Distinction.
- ★ Owned with Paul and Bette Slayton



Paul S. Bennett
(434) 941-8245
Dalton G. Bennett
(434) 664-7946



Jim G. Bennett
(434) 664-7935
Brian R. Bennett
(434) 664-8309
Scott R. Bennett
(434) 660-7268

P.O. Box 117, Red House, VA 23963
Martha Johnson,
Office Manager (434) 376-3567
knollcrest@knollcrestfarm.com
www.knollcrestfarm.com

KNOLL CREST

CELEBRATING **80** Years
1944-2024



KCF BENNETT EAGLE H550 (CHB) (DLF, HYF, IEF, MSUDF, MDF, DBF)

P44249999 - Calved: 9/28/2020 - Tattoo: RE H550

EFBEEF TFL U208 TESTED X651 ET (SOD) (CHB) (DLF, HYF, IEF, MSUDF)
INNISFAIL WHR X651/723 4013 ET (CHB) (DLF, HYF, IEF, MSUDF, MDF)
 P43541960 INNISFAIL P230 T723 (DLF, HYF, IEF, MSUDF)
 BEHM 100W CUDA 504C (CHB) (DLF, HYF, IEF, MSUDF, MDF, DBF)
KCF MISS CUDA E675 (DOD) (DLF, HYF, IEF)
 P43936432 KCF MISS REDEEM Z270 ET (DOD) (DLF, HYF, IEF)



CE	BW	WW	YW	DMI	SC	SCF	MM	M&G	MCE	MCW	UDDR	TEAT	CW	FAT	REA	MARB	BMI\$	BIIS	CHBS
8.9	0.5	81	125	0.6	2.1	21.8	37	77	5.3	110	1.40	1.40	88	0.072	0.60	0.64	482	618	184
11%	11%	1%	1%		1%	9%	5%	1%	15%		7%	11%	6%		20%	1%	3%	1%	1%

HOMOZYGOUS POLLED!

- ★ Eagle was the \$35,000 high selling bull of the December 2021 KCF Bull Sale.
- ★ Eagle posted a 98 BWR, 128 WWR, 116 YWR, 110 IMF and 120 RE in an extremely competitive contemporary group.
- ★ His Dam of Distinction mother is a stellar producer with 5 calves at 100 BWR, 4 calves at 116 WWR and 3 calves at 111 YWR.

- ★ Early progeny data indicates that Eagle is a bonafied calving ease sire with excellent growth, carcass and maternal traits.
- ★ Eagle is owned with Thorstenson Hereford Ranch and Topp Herefords



KCF BENNETT B716 F597 (CHB) (DLF, HYF, IEF, MSUDF, MDF, DBF)

P43983894 - Calved: 10/14/2018 - Tattoo: RE F597

CHURCHILL SENSATION 028X (SOD) (DLF, HYF, IEF, MDF, DBF)
KCF BENNETT DEVOUT B716 ET (DLF, HYF, IEF, MDF, DBF)
 P43595083 KCF MISS PROFICIENT U201 (DLF, HYF, IEF, MSUDF, MDF)
 MSU TCF REVOLUTION 4R (SOD) (DLF, HYF, IEF, MDF, DBC)
KCF MISS REVOLUTION X322 ET (DOD) (DLF, HYF, IEF, MSUDF, MDF, DBF)
 P43155578 KCF MISS H142 L332 (DOD)



SEMEN:

\$35/straw; \$50/certificate

CONTACT:

Knoll Crest Farm 434-376-3567

CE	BW	WW	YW	DMI	SC	SCF	MM	M&G	MCE	MCW	UDDR	TEAT	CW	FAT	REA	MARB	BMI\$	BIIS	CHBS
14.0	-0.2	67	109	0.6	1.7	27.9	42	76	9.4	53	1.40	1.40	93	0.032	1.01	0.34	564	667	172
2%	6%	11%	10%	84%	4%	1%	1%	1%	1%	4%	7%	11%	3%	63%	1%	8%	1%	1%	2%

HOMOZYGOUS POLLED!

- ★ Heavy pigmentation
- ★ F597 was the leadoff bull of the December 2019 KCF Sale
- ★ A proven multi-trait sire, F597 addresses improvement in nearly every trait.
- ★ The sire of KCF Bennett Monument J338

- ★ His Dam of Distinction mother is a perennial top producer who currently has 11 calves @ 99 BWR, 11 calves @ 108 WWR and 9 calves @ 7 YWR.
- ★ Co-owned with Double Diamond Ranch and Joe Waggoner



P.O. Box 117, Red House, VA 23963
 Martha Johnson,
 Office Manager (434) 376-3567
 knollcrest@knollcrestfarm.com
 www.knollcrestfarm.com

Paul S. Bennett
 (434) 941-8245
 Dalton G. Bennett
 (434) 664-7946



Jim G. Bennett
 (434) 664-7935
 Brian R. Bennett
 (434) 664-8309
 Scott R. Bennett
 (434) 660-7268



AW STATESMAN 038H {DLF,HYF,IEF,MSUDF,MDF}

P44177977

Calved: 2/24/2020 - Tattoo: BE 038H

EFBEEF TFL U208 TESTED X651 ET {SOD}{CHB}{DLF,HYF,IEF,MSUDF}

F FINAL TEST 722 {CHB}{DLF,HYF,IEF,MSUDF,MDF,DBF}

P43782451 F MS YORK 567 {DOD}{DLF,HYF,IEF,MSUDF}

MOHICAN THM EXCEDE Z426 {DLF,HYF,IEF,MSUDF,MDF,DBF}

AW LADY EXCEDE 82F {DLF,HYF,IEF,MSUDF}

P43944592 AW LADY SENSATION 613D {HYP}

CE	17.3	MM	28	FAT	0.052
BW	-4.2	M&G	58	REA	0.32
WW	60	MCE	5.1	MARB	0.55
YW	90	MCW	70	BMIS	556
DMI	0.4	UDDR	1.50	BIIS	671
SC	0.8	TEAT	1.50	CHBS	147
SCF	9.6	CW	66		



SEMEN: \$30/Straw; \$75/Certificate

Volume discount: 20 straws for \$500

Contact owners or Reed Enterprises, 660-527-3507

- HOMOZYGOUS POLLED!
- DB Free
- Quite possibly the best son of Final Test.
- Heifer approved.
- A high fertility sires with a great disposition.
- Top 3% or better for CE, BW, SCF, UDDR, TEAT and MARB.
- Average progeny ratios for BW 92.2, WW 102.3, YW 102.7
- All \$ values at the top of the breed.



STATESMAN CALF



JOURNAGAN RANCH
 MISSOURI STATE
 AGRICULTURE

Marty Lueck, manager
 Rt. 1, Box 85G
 Mountain Grove, MO 65711
 417-948-2669 or 417-838-1482
 mvlueck@centurytel.net

ASHLEWOOD
 FARM
 SELMER, TENNESSEE

Billy Ashe 731-610-4445
 Wes Ashe 731-439-3038

MPH 2I03 EASTWOOD G3 ET {DLF,HYF,IEF,MSUDF,MDF,DBP}



P44053546

Calved: 1/10/2019 - Tattoo: LE G3

CE	-1.5	MM	31	FAT	-0.019
BW	4.3	M&G	61	REA	0.66
WW	61	MCE	3.2	MARB	0.16
YW	100	MCW	76	BMI\$	310
DMI	0.5	UDDR	1.30	BIIS	386
SC	0.9	TEAT	1.30	CHBS	130
SCF	12.7	CW	75		



Semen: **\$35/Straw**; **\$75/Certificate**
Sexed Heifer Semen: **\$100/Straw**
Contact: Brian or Jim Reed, Reed Enterprises

NJW 98S R117 RIBEYE 88X ET {SOD}{DLF,HYF,IEF,MSUDF,MDF,DBF}
C MILES MCKEE 2I03 ET {SOD}{DLF,HYF,IEF,MSUDF,MDF}
43270668 C NOTICE ME ET {DLF,HYF,IEF}

REMITALL ONLINE 122L {SOD}{CHB}{DLF,HYF,IEF,DBC}
STAR KKH SSF OLIVIA 15U ET {DLF,HYF,IEF,DBP}
P42872212 SSF KEYSHA 949 {DLF,HYF,IEF}



STAR KKH SSF OLIVIA 15U ET
Dam of Eastwood

BK MPH OLIVIA 644D ET
Full sister to Eastwood

- Smooth polled.
- Eastwood is the son of the record selling and Denver champion bull, Miles McKee and the record selling and Denver champion female, Olivia.
- He is the unique combination of timeless genetics and outstanding phenotype.
- He is the complete herd sire that checks all the boxes.
- 2021 South Dakota State Fair Supreme Champion Bull
- 2021 American Royal Reserve Champion Senior Bull

MPH Z3II RAMPAGE DI {CHB}{DLF,HYF,IEF,MSUDF}



P43696424

Calved: 1/7/2016 - Tattoo: LE D1

CE	6.6	MM	34	FAT	0.041
BW	-0.5	M&G	64	REA	0.47
WW	60	MCE	8.8	MARB	0.40
YW	95	MCW	91	BMI\$	356
DMI	0.2	UDDR	1.30	BIIS	450
SC	1.3	TEAT	1.40	CHBS	156
SCF	14.6	CW	78		



Semen: **\$30/Straw**; **\$75/Certificate**
Sexed Heifer Semen: **\$100/Straw**
Contact: Brian or Jim Reed, Reed Enterprises

SCHU-LAR ON TARGET 22S {SOD}{CHB}{DLF,HYF,IEF,MSUDF,MDF,DBF}
KCF BENNETT ENCORE Z3II ET {SOD}{CHB}{DLF,HYF,IEF,MSUDF,MDF,DBF}
P43387256 KCF MISS REVOLUTION X338 ET {DLF,HYF,IEF,DBP}

RST TIMES A WASTIN 0124 {SOD}{DLF,HYF,IEF}
RHF 0124 ROSIE 3023A {DOD}{DLF,HYF,IEF}
43467528 GRANDVIEW CMR MIS P606 X395 ET {DLF,HYF,IEF,MSUDF}

- Rampage combines calving ease with maternal punch.
- His mother is a highly productive Dam of Distinction that does not miss.
- He is conservatively marked and fully pigmented with all the bells and whistles.
- His first daughters are in production and he is truly a bull that will add milk and fix udders.
- Encore's lowest birth weight and most consistent son.



BRIAN & RON METTLER
28225 431st Ave. • Menno, SD 57045
Brian 605-951-3007 • Ron 605-387-2841
bmettler@gwtc.net
www.mettlerpolledherefords.com

CMF OHR 250D HOLLAND 625H {DLF,HYF,IEF,MSUDF,MDF}



P44203422

Calved: 9/18/2020 - Tattoo: LE CMF/RE 625H

KCF BENNETT ENCORE Z311 ET {SOD}{CHB}{DLF,HYF,IEF,MSUDF,MDF,DBF}
 NJW 79Z Z311 ENDURE 173D ET {CHB}{DLF,HYF,IEF,MSUDF,MDF,DBF}
 P43722088 BW 91H 100W RITA 79Z ET {DLF,HYF,IEF,MSUDF,MDF}
 GERBER ANODYNE 001A {SOD}{CHB}{DLF,HYF,IEF,MSUDF}
CMF I16B TORI 250D {DLF,HYF,IEF,MSUDF}
 P43757659 CMF 40X TORI 116B

- Homozygous Polled!
- Top 1% WW, YW, M&G, CW, REA, and CHB!
- BW 79, 205 wt. 760, YW 1312, REA 14.85, IMF 4.11.
- Dam ratios 104.4 on 5 at weaning, 110 in IMF and 103 on REA.
- Semen stored at 605 Sires in SD.
- Embryos for sale by our top donors Z14 and 126.
- Owned with Candy Meadow Farms, Lexington, Tenn.

CE	BW	WW	YW	DMI	SC	SCF	MM	M&G	MCE	MCW	UDDR	TEAT	CW	FAT	REA	MARB	BMI5	BI5	CHBS
5.0	2.6	78	131	0.5	1.6	18.6	38	77	2.0	107	1.10	1.20	106	0.052	1.03	0.31	451	558	190
		1%	1%		6%		4%	1%					1%		1%	11%	7%	5%	1%

Semen: \$40/Straw; Non-Certificate
 Volume discounts available
 Contact: Carl Olson 701-361-0684

OHR 543G GOLD POWER 779K {DLF,HYF,IEF,MSUDF}



P44423726

Calved: 9/7/2022 - Tattoo: LE CMF/RE 779K

NJW 79Z Z311 ENDURE 173D ET {CHB}{DLF,HYF,IEF,MSUDF,MDF,DBF}
CMF 1720 GOLD RUSH 569G ET {CHB}{DLF,HYF,IEF,MSUDF,MDF,DBF}
 P44108010 L III TFL C609 VICTORIA 1720 {DLF,HYF,IEF,MSUDF}
 R LANDMARK 4386 {CHB}{DLF,HYF,IEF,MSUDF,MDF,DBF}
CMF 104B SARA 543C {DLF,HYF,IEF,MSUDF,MDF,DBF}
 P44089326 CMF 59Z SARA 104B {DOD}{DBP}

- Homozygous Polled!
- Top 1% for MARB & CHB. Top 5% REA. Top 10% YW, MCE, CW an d BI.
- Grandmother and 3 of 4 Great Granddams are Dams of Distinction!
- 70 lb. BW, 723 lb. WW, 42 cm testicles at 15 months.
- Heifer bull with extra muscle, body mass and pigmentation!

CE	BW	WW	YW	DMI	SC	SCF	MM	M&G	MCE	MCW	UDDR	TEAT	CW	FAT	REA	MARB	BMI5	BI5	CHBS
5.0	2.3	62	109	0.7	1.3	18.2	25	56	6.0	91	1.20	1.20	84	0.051	0.78	0.60	419	530	179
		10%							10%				10%		5%	1%		10%	1%

Semen: \$40/Straw; Non-Certificate
 Volume discounts available
 Contact: Carl Olson 701-361-0684

TH 6153 IMPRINT 956J ET {DLF,HYF,IEF,MSUDF,MDF}



P44287986

Calved: 5/14/2021 - Tattoo: BE 956J

R LEADER 6964 {SOD}{DLF,HYF,IEF,MSUDF,DBF}
BOYD 31Z BLUEPRINT 6153 {DLF,HYF,IEF,MSUDF,MDF}
 P43764491 NJW 91H 100W RITA 31Z ET {DLF,HYF,IEF}
 TH 71U 719T MR HEREFORD 11X {SOD}{DLF,HYF,IEF,MDF,DBF}
KCL IIX ROSIE 92X 56A ET {DLF,HYF,IEF}
 P43462211 STAR SIS LADY WIZARD 92X {DLF,HYF,IEF}

- Homozygous Polled!
- Top 3% for CED, CEM and TEAT, 2% UDDR, 10% REA and improver for 18 of 20!
- 80 lb. BW (ET), 110 ratio REA, 107 ratio IMF, 44cm testicles @ 21months, 2061 lbs. @ 2 years.
- First 40 calves at Topps averaged 78lbs. They expect to get around 100!
- Heifer bull with extra muscle shape, great structure and super dam!
- Owned with Topp Herefords, Grace City, ND and Jim McFadgen, Rogers, ND.

CE	BW	WW	YW	DMI	SC	SCF	MM	M&G	MCE	MCW	UDDR	TEAT	CW	FAT	REA	MARB	BMI5	BI5	CHBS
12.2	1.6	57	85	0.2	1.3	19.4	30	59	8.0	68	1.50	1.50	78	0.042	0.71	0.13	421	497	139
4%				6%					3%	11%	1%	3%			9%				15%

Semen: \$40/Straw; Non-Certificate
 Volume discounts available
 Contact: Carl Olson 701-361-0684

OLSON
Hereford Ranch
 16068 24th St SE - Argusville, ND 58005
 Carl 701-361-0684, Lindsay 701-388-5801, olsoncandc@aol.com
www.olsonredpower.com
 Breeding High Quality Registered Herefords Since 1936!

Olson's **Red Power**
 Performance Bull & Female Sale
 Thursday Feb. 20, 2025 Thursday

Spring
Break
Special

CALVING EASE/CARCASS BULLS

EF MF LONGEST YARD 19Z 228J ET {DLF,HYF,IEF,MSUDF,MDF}



P44225190

Calved: 2/28/2021 - Tattoo: BE 228J

CE	6.1	MM	47	FAT	-0.008
BW	0.5	M&G	81	REA	0.42
WW	67	MCE	2.4	MARB	0.12
YW	106	MCW	73	BMI\$	564
DMI	0.2	UDDR	1.50	BIIS	657
SC	0.8	TEAT	1.60	CHBS	126
SCF	30.1	CW	71		



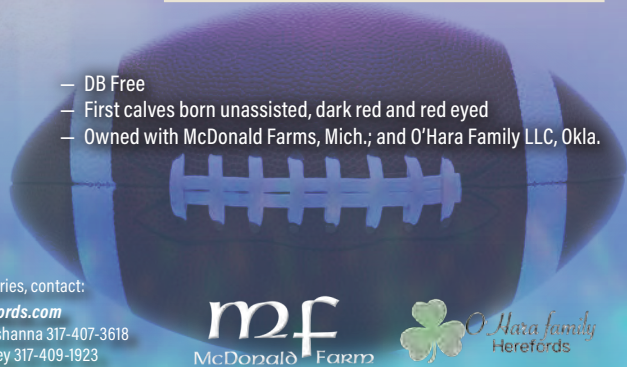
Spring Break Special runs through April 30, 2024

SEMEN: \$50/Straw; 10 straw minimum

CHURCHILL SENSATION 028X {SOD}{DLF,HYF,IEF,MDF,DBF}
NJW LONG HAUL 36E ET {DLF,HYF,IEF,MSUDF,MDF,DBF}
 P43829326 NJW 79Z 10W RITA 11B {DLF,HYF,IEF,MSUDF,MDF}

BAR JZ RUMBLE 525X {DLF,HYF,IEF,DBP}
AH MS 25L RUMBLER 19Z {DOD}{DLF,HYF,IEF,MSUDF,DBF}
 P43292936 AH JDH MS 25L WRANGLER 34X ET {DOD}{DLF,HYF,IEF}

- DB Free
- First calves born unassisted, dark red and red eyed
- Owned with McDonald Farms, Mich.; and O'Hara Family LLC, Okla.



HEREFORDS
Everhart

All semen inquiries, contact:
Everhartherefords.com
 Bruce and Shoshanna 317-407-3618
 Blake and Ashley 317-409-1923
 Brian and Jordan 317-512-0375

mf
McDonald Farm



O'Hara Family
Herefords

EF C&L BIG RIG 19Z 36E 220J ET {DLF,HYF,IEF,MSUDF,MDF}



P44221978

Calved: 2/20/2021 - Tattoo: BE 220J

CE	8.4	MM	36	FAT	-0.018
BW	-0.2	M&G	68	REA	0.69
WW	63	MCE	5.9	MARB	0.24
YW	102	MCW	84	BMI\$	478
DMI	0.2	UDDR	1.30	BIIS	568
SC	1.3	TEAT	1.40	CHBS	150
SCF	22.9	CW	77		



Spring Break Special runs through April 30, 2024

SEMEN: \$50/Straw; 10 straw minimum

CHURCHILL SENSATION 028X {SOD}{DLF,HYF,IEF,MDF,DBF}
NJW LONG HAUL 36E ET {DLF,HYF,IEF,MSUDF,MDF,DBF}
 P43829326 NJW 79Z 10W RITA 11B {DLF,HYF,IEF,MSUDF,MDF}

BAR JZ RUMBLE 525X {DLF,HYF,IEF,DBP}
AH MS 25L RUMBLER 19Z {DOD}{DLF,HYF,IEF,MSUDF,DBF}
 P43292936 AH JDH MS 25L WRANGLER 34X ET {DOD}{DLF,HYF,IEF}

- DB Free
- First calves born unassisted, dark red and red eyed
- Owned with C&L Hereford Ranch, Wisc.

All semen inquiries, contact:
Everhartherefords.com
 Bruce and Shoshanna 317-407-3618
 Blake and Ashley 317-409-1923
 Brian and Jordan 317-512-0375

HEREFORDS
Everhart



HEREFORD RANCH

CALVING EASE/CARCASS BULLS

Spring Break Special

WMC EF 18051 9G DEVOTION 5K {DLF,HYF,IEF,MSUDF,MDF}



P44372795

Calved: 1/16/2022 - Tattoo: LE 5K/RE WMC

CE	7.8	MM	33	FAT	0.052
BW	1.4	M&G	66	REA	0.51
WW	67	MCE	3.6	MARB	0.47
YW	100	MCW	87	BMSI	423
DMI	0.5	UDDR	1.40	BIIS	532
SC	1.3	TEAT	1.40	CHBS	158
SCF	19.3	CW	81		



Spring Break Special runs through April 30, 2024

SEMEN: \$50/Straw; 10 straw minimum

KCF BENNETT DEVOUT B716 ET {DLF,HYF,IEF,MDF,DBF}
JW B716 DEVOUT 18051 {CHB}{DLF,HYF,IEF}
 P43859659 JW 936 DOMINETTE 1674 ET {DLF,HYF,IEF,MSUDF}

HILLS-GALORE 44Z RESOLUTE 128D {CHB}{DLF,HYF,IEF,MSUDF}
WMC 128D RESOLUTE 9G {DLF,HYF,IEF,MSUDF}
 P43998793 WMC 63A QUEEN 27D {DLF,HYF,IEF,MSUDF,MDF}

HOMOZYGOUS POLLED

- DB Free
- First calves born unassisted, dark red and red eyed
- Owned with Durbin Creek Ranch, Wyo.; and WMC Cattle Co., Mo.

HEREFORDS
Everhart

All semen inquiries, contact:
Everhartherefords.com
 Bruce and Shoshanna 317-407-3618
 Blake and Ashley 317-409-1923
 Brian and Jordan 317-512-0375



WMC
 Cattle Co.



WESTERN REGION *Ariz., Calif., Idaho, Nev., Ore., Utah, and Wash.*
EMILEE HOLT
 208-965-3130
 eholt@hereford.org

AMERICAN HERFORD ASSOCIATION

FIELD STAFF

WE HAVE YOU COVERED!

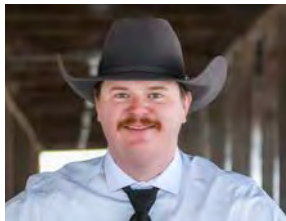
The American Hereford Association Field Staff are Here to Help You Market Your Cattle and Promote Your Operation.

Contact your local field representative when you are interested in:

- Placing an ad in the *Hereford World/Baldy Advantage*
- Creative Service projects, including sale catalogs, flyers or brochures
- Buying or selling Hereford-influenced feeder calves
- Marketing cattle through the CHB program
- Assistance in marketing your Hereford seedstock and commercial females



MOUNTAIN REGION *Colo., Mont., N.D., Wyo., and central and western Canadian provinces*
KEVIN MURNIN
 406-853-4638
 kmurnin@hereford.org



NORTH CENTRAL REGION *Kan., Minn., Neb. and S.D.*
AARON FRIEDT
 701-590-9597
 afriedt@hereford.org



EASTERN REGION *Ala., Fla., Ga., Miss., N.C., S.C., Tenn. and Va.*
TOMMY COLEY
 815-988-7051
 tcoley@hereford.org



SOUTHWEST REGION *Ark., La., N.M., Okla., and Texas*
CORD WEINHEIMER
 830-456-3749
 cweinheimer@hereford.org



CENTRAL REGION *Iowa, Mo. and eastern Canada*
JOE RICKABAUGH
 785-633-3188
 jrlick@hereford.org

CONTACT AHA 816-842-3757

NORTHEAST REGION *Conn., Del., D.C., Maine, Mass., N.H., N.J., N.Y., R.I., and Vt.*
 UPPER MIDWEST REGION *Ill., Ind., Ky., Md., Mich., Ohio, Penn., W.Va., and Wis.*

AMERICAN HERFORD ASSOCIATION

11500 N. Ambassador Dr., Suite 410
 Kansas City, MO 64153
 816-842-3757 | www.hereford.org



CE	11.7	BMS	500
BW	-0.3	BIIS	599
WW	66	CHBS	109
YW	105		
DMI	0.8		
SC	1.8		
SCF	27.2	AHA	GE-EPD
MM	30		
M&G	63	MA	
MCE	3.7		
MCW	119		
UDDR	1.40		
TEAT	1.40	PREMIUM	RED BALDY
CW	69		
FAT	0.091		
REA	0.27	SCHB	
MARB	0.22		



NJW 133A 6589 MANIFEST 87G ET {DLF,HYF,IEF,MSUDF,MDF,DBF}

P44057384 Calved: 2/10/2019 - Tattoo: LE 87G/RE 133A

R LEADER 6964 {SOD}{DLF,HYF,IEF,MSUDF,DBF}
 /S MANDATE 66589 ET {CHB}{DLF,HYF,IEF,MSUDF,MDF,DBF}
 P43834732 /S LADY DOMINO 0158X {DLF,HYF,IEF}

NJW 73S W18 HOMETOWN 10Y ET {SOD}{CHB}{DLF,HYF,IEF,MSUDF,MDC}
 BW NJW 76S 8Y HOMESPUN 133A {DLF,HYF,IEF,MSUDF,MDC}
 P43385252 NJW 55N STARDUST 76S {DLF,HYF,IEF,MSUDF,MDF}

- Act. BW 88 lb., Adj. WW 721 lb., Adj. YW 1,250 lb., Act. SC at 1 year 41 cm., Adj. REA 13.69, Adj. MARB 4.14
- A HEREFORD 9 TRAIT LEADER
- Elite Breeding Herd Builder with the phenotype, numbers and data we are demanding!
- Extra long, wide, big topped, square and deep hipped, super sound moving and balanced end to end!
- Marked right with extra pigment, big, well-made testicles and has a super kind, quiet disposition!
- First progeny averaged \$9,208 in NJW 2022 sale.
- No matter your breeding focus or what part of the country you are in, 87G should add value to your program!
- From the same maternally superior cow family as Beef 38W and Long Range 203D! First daughters in production look like we had hoped! Sons share his signature look and are sale features!
- Avg. BW on 3 NJW calf crops - 76 lb. Use on heifers or cows.

Semen: \$25/Straw; \$75/Certificate. Foreign semen available.



87G



187J
Daughter



Dam - **133A**



Son - **55J**



Son - **216J**

NJW POLLED HEREFORDS

Jf Ned and Jan Ward 406-757-0600
 Ned cell 307-751-8298
 Jan cell 307-751-9470
 njwardherefords@gmail.com
 www.NJWHerefords.com

NORTH RANCH:
 2637 Adsit Rd., Decker, MT 59025
 SOUTH RANCH:
 888 Lower Prairie Dog Rd., Sheridan, WY 82801
 Mailing address: PO Box B • Sheridan, WY 82801

Chapman
LAND & CATTLE

Ryan Chapman 615-335-3187
 John Thomas Woolfolk 731-345-1585
 2090 Old Airport Rd.
 Nunnely, TN 37137
 www.chapmanlandandcattle.com

CE	11.5	BMIS
BW	-0.6	503
WW	61	BIIS
YW	96	581
DMI	-0.1	CHBS
SC	1.7	108
SCF	26.9	AHA GE EPD
MM	38	MA ⁺
M&G	68	
MCE	3.5	PREMIUM REDBALDY
MCW	69	
UDDR	1.50	
TEAT	1.60	
CW	57	
FAT	-0.029	
REA	0.43	
MARB	0.03	



NJW 11B 028X HOSS 41E ET {DLF,HYF,IEF,MSUDF,MDF,DBF}

P43829325 Calved: Feb. 02, 2017 - Tattoo: LE 41E/RE 11B

UPS DOMINO 3027 {SOD}{CHB}{DLF,HYF,IEF,MSUDF,MDF}
CHURCHILL SENSATION 028X {SOD}{DLF,HYF,IEF,MDF,DBF}
 43092364 CHURCHILL LADY 7202T ET {DLF,HYF,IEF}

LJR 023R WHITMORE 10W {SOD}{DLF,HYF,IEF,MSUDF,MDF,DBF}
NJW 79Z 10W RITA 11B {DLF,HYF,IEF,MSUDF,MDF}
 P43483038 BW 91H 100W RITA 79Z ET {DLF,HYF,IEF,MSUDF,MDF}



41E as a yearling

- BW 88 lb., Adj. WW 752 lb., Adj. YW 1,247 lb., Adj. REA 15.23, Adj. MARB 3.9
- A HEREFORD 13 TRAIT LEADER!
- One of the most complete genetic packages we have raised both from a phenotypic and genetic standpoint. Hard working daughters sport beautiful udders and sons are top end breeding tools. "Power Cow" dam, 11B and grandam 79Z, are mothers of many NJW sale features and herd sires.
- Use on both heifers and cows. Avg. BW on five NJW crops - 85 lb.

Semen: \$25/Straw; \$75/Certificate
 Contact: NJW Polled Herefords



140H — 2-year-old daughter and calf



Son — **28K**



Son — **173K**



Son — **187K**



Jf Ned and Jan Ward 406-757-0600
 Ned cell 307-751-8298
 Jan cell 307-751-9470
 njwardherefords@gmail.com
www.NJWHerefords.com

NORTH RANCH:
 2637 Adsit Rd., Decker, MT 59025
 SOUTH RANCH:
 888 Lower Prairie Dog Rd., Sheridan, WY 82801
 Mailing address: PO Box B • Sheridan, WY 82801



18575 Hwy. 16
 Siloam Springs, AR 72761
 479-601-4317

CE	4.4	BMIS
BW	2.1	474
WW	65	BIIS
YW	96	564
DMI	0.6	CHBS
SC	1.0	90
SCF	26.3	AHA GE-EPD
MM	41	MA ⁺ MATURE ADJUSTED
M&G	74	
MCE	-2.4	PREMIUM RED BALDY
MCW	70	
UDDR	1.50	
TEAT	1.60	
CW	66	
FAT	0.081	
REA	0.25	
MARB	0.09	



NJW I39C I03C RIDGE 254G {DLF,HYF,IEF,MSUDF,MDF,DBF}

P44056537 Calved: 3/11/2019 - Tattoo: LE 254G/RE 139C

NJW 76S P20 BEEF 38W ET {SOD}{DLF,HYF,IEF,MSUDF,MDF}
NJW 73S 38W RIDGE I03C ET {DLF,HYF,IEF,MSUDF,MDF}
 P43589085 NJW P606 72N DAYDREAM 73S {DLF,HYF,IEF,MSUDF,MDF}

NJW 98S R117 RIBEYE 88X ET {SOD}{DLF,HYF,IEF,MSUDF,MDF,DBF}
NJW 149Z 88X LEXY I39C ET {DOD}{DLF,HYF,IEF,MSUDF,MDF}
 P43589219 NJW 27R 100W LEXY 149Z {DOD}{DLF,HYF,IEF,MSUDF}

HOMOZYGOUS POLLED!

- The I03C son we have been waiting for – a bull that incorporates all the great qualities of 88X and Beef, yet is homozygous polled and dark red with extra pigment.
- Dam is a favorite 88X daughter and top producer.
- Used heavily at NJW on both heifers and cows. Avg. BW on 3 NJW crops – 78 lb.
- First daughters calving have beautiful udders!
- 19 progeny in 2022 NJW sale average \$8,118.
- Act. BW 78 lb., Adj. WW 712 lb., Adj. YW 1,221 lb., Adj. REA 12.84, Adj. MARB 3.91

Semen: \$25/Straw; \$75/Certificate



158J
Son



139C
Dam



Daughter – **237J**



Son – **185J**



Son – **5J**



Jf Ned and Jan Ward 406-757-0600
 Ned cell 307-751-8298
 Jan cell 307-751-9470
 njwardherefords@gmail.com
www.NJWHerefords.com

NORTH RANCH:
 2637 Adsit Rd., Decker, MT 59025

SPRING SALE LOCATION — SOUTH RANCH:
 888 Lower Prairie Dog Rd., Sheridan, WY 82801
 Mailing address: PO Box B • Sheridan, WY 82801

SPRING SALE MARCH 27, 2024

Selling 100 Balanced Trait, Big Bodied,
 Easy Fleshing, Maternally-Powered Yearling Bulls
 • 8 18-month-old Bulls • 1 Proven Herd Sire
 40 Registered Yearling Heifers
 • 7 Fall Bred Heifers • Pick of 2024 Heifer Calves

CE	2.9	MCW	106
BW	2.8	UDDR	1.60
WW	66	TEAT	1.60
YW	106	CW	91
DMI	0.4	FAT	0.061
SC	1.0	REA	0.59
SCF	25.2	MARB	0.39
MM	35	BMI\$	521
M&G	68	BIIS	628
MCE	0.3	CHBS	167



Call NJW for semen options.

NJW 79Z 029H VISTA 147L ET {DLF,HYF,IEF,MSUDF,MDF}



P44486345 Calved: 2/20/2023 - Tattoo: LE 147L/RE 79Z

CHURCHILL BROADWAY 858F {CHB}{DLF,HYF,IEF,MSUDF,MDF,DBF}

CHURCHILL DESPERADO 029H {CHB}{DLF,HYF,IEF,MSUDF,MDF,DBF}

P44149846 CHURCHILL LADY 8251F ET {DLF,HYF,IEF,MSUDF}

NJW 73S M326 TRUST 100W ET {SOD}{CHB}{DLF,HYF,IEF,MSUDF,MDF,DBF}

BW 91H 100W RITA 79Z ET {DLF,HYF,IEF,MSUDF,MDF}

P43311375 REMITAL RITA 91H {DLF,HYF,IEF}



79Z
Dam

CE	4.4	MCW	91
BW	1.9	UDDR	1.30
WW	65	TEAT	1.40
YW	108	CW	71
DMI	0.4	FAT	0.031
SC	1.5	REA	0.38
SCF	24.4	MARB	0.07
MM	32	BMI\$	467
M&G	64	BIIS	552
MCE	-1.2	CHBS	113



Semen:
\$25/Straw;
\$75/Certificate

NJW 247C 41E SOUL 173K {DLF,HYF,IEF,MSUDF,MDF,DBF}



P44376864 Calved: 2/20/2022 - Tattoo: LE 173K/RE 247C

CHURCHILL SENSATION 028X {SOD}{DLF,HYF,IEF,MDF,DBF}

NJW 11B 028X HOSS 41E ET {DLF,HYF,IEF,MSUDF,MDF,DBF}

P43829325 NJW 79Z 10W RITA 11B {DLF,HYF,IEF,MSUDF,MDF}

THM DURANGO 4037 {SOD}{DLF,HYF,IEF}

NJW 80L 4037 PRAIRIE 247C ET {DLF,HYF,IEF,MSUDF,MDF}

P43669636 NJW 12E PRAIRIE 80L {DLF,HYF,IEF}

HOMOZYGOUS POLLED!

- An all-around easy doing, big volume man - backed by Timeless Proven Heritage. He's a "Cowman's Bull" ... soggy and soft with a big hip and stifle plus is super sound moving. His grandam, 80L, was born 22 years ago but would still be a top cow in our program today. We are using very heavily at NJW and getting our first crop of calves by him now!
- Act. BW 98 lb., Adj. WW 733 lb., Adj. YW 1,289 lb., Adj. REA 15.82, ratio 114; Adj. MARB 4.24, ratio 122
- Foreign semen available



173K and Dam **247C**



Jf Ned and Jan Ward 406-757-0600
Ned cell 307-751-8298
Jan cell 307-751-9470
nwardherefords@gmail.com
www.NJWHerefords.com

NORTH RANCH:
2637 Adsit Rd., Decker, MT 59025

SPRING SALE LOCATION — SOUTH RANCH:
888 Lower Prairie Dog Rd., Sheridan, WY 82801
Mailing address: PO Box B · Sheridan, WY 82801

SPRING SALE MARCH 27, 2024

Selling 100 Balanced Trait, Big Bodied,
Easy Fleshing, Maternally-Powered Yearling Bulls
• 8 18-month-old Bulls • 1 Proven Herd Sire
40 Registered Yearling Heifers
• 7 Fall Bred Heifers • Pick of 2024 Heifer Calves

(DLF) (IEF) (HYF) (MSUDF) (MDF) (DBF)

JW 1857

MERIT

21134

POLIED • AHA# 44212986 • DOB 10/14/2020

EFBEEF TFL U208 TESTED X651 ET

JDH VICTOR 719T 33Z ET

JW X651 TESTED 1857 ET X JW 33Z VICTORIA 19027

KCF MISS 22S A261

JW 028X DOMINETTE 1417



CONTACT US FOR SEMEN
\$50/STRAW
CERTIFICATES \$100

	CED	BW	WW	YW	DMI	SC	SCF	MM	MG	MCE	MCW	UDDR	TEAT	CW	FAT	REA	MARB	\$BMI	\$BII	\$CHB
EPD	8.5	1.9	90	150	1.5	1.9	21.0	33	78	4.2	123	1.50	1.50	111	0.011	1.02	0.62	488	627	211
ACC	.37	.75	.58	.55	.17	.35	.30	.21	-	.33	.30	.44	.44	.24	.28	.24	.25	-	-	-
%	12%	31%	1%	1%	99%	2%	14%	15%	1%	25%	97%	2%	3%	1%	29%	1%	1%	2%	1%	1%



\$11,000 Merit heifer calf



\$6,000 Merit heifer calf

◆ HOMOZYGOUS POLLED

- ◆ TOP 1% FOR WW, YW, SC, MG, CW, REA, MARB, BMI, BII, CHB
- ◆ MERIT'S CALVES ARE THE RIGHT SIZE. THEY COME SMALL AT BIRTH AND HAVE A TON OF GROWTH AND EYE APPEAL
- ◆ MERIT IS TRULY UNMATCHED IN HIS COMBINATION AND SPREAD FROM CED TO YW, WHILE NOT SACRIFICING MATERNAL TRAITS



Owning and operating a bull stud can show you pretty quickly just how important fertility is, and how much emphasis we should be putting on fertility. Merit is one bull that collects outstandingly well and is super fertile time and time again.

-JOHN & RANDA STARNES



RANDY & KELLY OWEN, OWNERS
533 RANDY OWEN DR. NE
FORT PAYNE, ALABAMA

JOHN, RANDA, HARPER & JOHN OWEN STARNES
JOHN 256-996-5559
RANDA 256-996-5545

ROLAND & JANET STARNES
706-601-0800

JOE WAGGONER
2096 PILGRIM REST RD
CARTHAGE, MISSISSIPPI
JOE 601-572-4111

ASM 405B RED MAN 325L ET

(DLF) (IEF) (HYF) (MSUDF) (MDF) (DBF)

KCF BENNETT ENCORE Z311 ET
 SIRE: **NJW 79Z Z311 ENDURE 173D ET** • DAM: **ASM 705 10Y MISS MALLORY 405B**
 BW 91H 100W RITA 79Z ET
 ASM 122L MISS 705ET
 AHA # **P44491851** • DOB: **2/22/23** • **HOMOZYGOUS POLLED**

RED MAN



SEMEN PACKAGES
\$1,000 FOR 10 STRAWS
 NON-CERTIFICATE



CE	BW	WW	YW	DMI	SC	SCF	MM	MG	MCE
12.9	0.8	63	107	0.4	0.9	22.6	36	68	7.1
3%	14%	24%	12%	70%	61%	6%	6%	7%	5%

MCW	UDDR	TEAT	CW	FAT	REA	MARB	BMI	BII	CHB
85	1.20	1.30	103	0.022	0.91	0.35	501	598	189
3%	14%	24%	12%	70%	61%	6%	6%	7%	5%

TOP 10% OF THE BREED FOR 12 TRAITS



JUNIOR POLLED GOLF DIVISION CHAMPION
 2024 CATTLEMEN'S CONGRESS



MATHENY HEREFORDS

ANDREW & SUZANNE, AUSTIN & RYLEE, TAYLOR BELLE MATHENY
 6706 US 68 • MAYS LICK, KY
 ANDREW: 606-584-5361 • AUSTIN: 606-375-2167



Tennessee River Music

JOHN, RANDA, HARPER & JOHN OWEN STARNES
 4518 COUNTY ROAD 255 • FORT PAYNE, AL
 JOHN: 256-996-5559 • RANDA: 256-996-5545

CONTACT US TODAY TO ORDER YOUR SEMEN PACKAGE



THF MILFORD 21J

{DLF, HYF, IEF, MSUDF, MDF, DBF}

Calved: August 7, 2021 AHA # P44280369

NJW 73S M326 Trust 100W ET
{SOD, CHB, DLF, HYF, IEF, MSUDF, MDF}

BEHM 100W CUDA 504C
{CHB, DLF, HYF, IEF, MDF}

BEHM R294 Jasman 102Y
{DOD, DLF, HYF, IEF, MSUDF}

GERBER Blue Chip 002B
{CHB,DLF,HYF,IEF,MSUDF,MDF}

THF Millie 10D
{DLF, HYF, IEF, MSUDF, MDF}

THF Madison 2B



As of January 2024

- ▶ **HOMOZYGOUS POLLED**
- ▶ High calving ease and low birth weight
- ▶ Excellent maternal characteristics
- ▶ High growth and carcass performance traits
- ▶ 13 EPD traits in the top 25%
- ▶ CHB +\$158

#	CE (%)	BW (lb)	WW (lb)	YW (lb)	DMI (lbs)	SC (cm)	SCF (%)	MM (lb)	MG (lb)	MCE (%)
EPD	14.2	0.0	58	96	0.3	1.6	14.8	36	65	7.0
MCW (lb)	UDDR (%)	TEAT (%)	CW (lb)	FAT (in)	REA (sq.in)	MARB (deg.)	BMI (\$)	BII (\$)	CHB (\$)	
67	1.40	1.50	75	0.012	0.43	0.41	354	447	158	



THF CHIEF 3J

{DLF, HYF, IEF, MSUDF, MDF, DBF}

Calved: May 7, 2021 AHA # P44273846

NJW 73S M326 Trust 100W ET
{SOD, CHB, DLF, HYF, IEF, MSUDF, MDF}

BEHM 100W CUDA 504C
{CHB, DLF, HYF, IEF, MDF}

BEHM R294 Jasman 102Y
{DOD, DLF, HYF, IEF, MSUDF}

SHF Rib Eye M326 R117
{CHB,SOD,DLF,HYF,IEF}

Woods Branch Prospectat 15 X20
{DLF, HYF, IEF, MSUDF, MDF}

Woods Branch Prospecta T15



As of January 2024

- ▶ **HOMOZYGOUS POLLED**
- ▶ High calving ease and low birth weight
- ▶ Excellent maternal characteristics
- ▶ High growth and carcass performance traits
- ▶ 11 EPD traits in the top 25%
- ▶ CHB +\$180

#	CE (%)	BW (lb)	WW (lb)	YW (lb)	DMI (lbs)	SC (cm)	SCF (%)	MM (lb)	MG (lb)	MCE (%)
EPD	10.4	-0.2	63	103	0.3	0.8	17.6	30	62	1.3
MCW (lb)	UDDR (%)	TEAT (%)	CW (lb)	FAT (in)	REA (sq.in)	MARB (deg.)	BMI (\$)	BII (\$)	CHB (\$)	
75	1.30	1.20	90	0.062	0.73	0.46	415	518	179	

SEMEN

\$25/straw; \$25/certificate
5 straw minimum

Jeff and Andrea Cramer
Apple Creek, Ohio & Fresno, Ohio
330.464.1810 | jeffcramer@hughes.net

Twin Hills Farms

AF B G16

GENESIS 244 ET {DLF, HYF, IEF, MSUDF, MDF, DBF}



P44395909

Calved: 2/15/2022 - Tattoo: LE 244



NJW 79Z Z311 ENDURE 173D ET {CHB} {DLF, HYF, IEF, MSUDF, MDF, DBF}

LOEWEN GENESIS G16 ET {CHB} {DLF, HYF, IEF, MDF, DBF}

P43987463 LOEWEN 77 48 MISS 344N 4RB42ET {DLF, HYF, DBP}

RPH PCR IDAHO 80U {SOD} {DLF, HYF, IEF, DBP}

PCR IDA GOLDIE 40X {DLF, HYF, IEF, MSUDF, MDF, DBP}

P43112028 PCR ABIGAIL GOLDIE 854U {HYP, DBP}

CE	7.4	MCW	108
BW	1.9	UDDR	1.40
WW	64	TEAT	1.30
YW	112	CW	94
DMI	0.6	FAT	0.081
SC	1.2	REA	0.71
SCF	19.9	MARB	0.42
MM	33	BMI\$	447
M&G	65	BII\$	550
MCE	5.0	CHB\$	174



- Sired by Genesis out of the dam of Bentley, 244 is a bull that will add capacity, length, and muscle to his progeny. He's deep bodied and carries that depth from his heart all the way through his flank. Wide topped and wide on the ground, a true performance bull. Phenotype isn't his only asset, boasting an EPD profile that has utility in any program.
- Top 10% of breed in 8 traits, including top 4% for Marbling, 2% for Carcass Weight, and the Top 1% in the breed for CHB at a whoppin' 174!

Semen: \$50/Straw; \$50/Certificate
 Bulk pricing available. Contact Gary Friedt 701-290-7231

HILLSVIEW FARMS

Darwin and Cindy Aman

Darwin 605-377-3459 • Cindy 605-377-3441
dcaman@valleytel



Bayers Hereford Ranch

Jill Bayers Hotchkiss
jbbh@herefordamerica.com • 605/490-1409
13823 Beaver Creek Pl. • Reva, SD 57651
www.BayersHerefordRanch.com



Gary Friedt 701-290-7231
www.buyherefordbulls.com



CANYON GEM 33Z C2II 324G ET {CHB}{DLF,HYF,IEF,MSUDF,MDF}

P44151663

Calved: 10/7/2019 - Tattoo: LE 324G ET/RE CG

TH 122 7II VICTOR 719T {SOD}{DLF,HYF,IEF,MSUDF,MDF}
JDH VICTOR 719T 33Z ET {SOD}{CHB}{DLF,HYF,IEF,MSUDF,DBF}
 P43294080 JDH MS YANKEE 11U ET {DLF,HYF,IEF,DBP}

EFBEEF TFL U208 TESTED X651 ET {SOD}{CHB}{DLF,HYF,IEF,MSUDF}

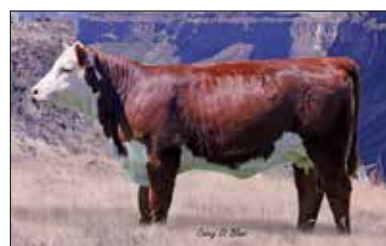
CG X651 TESTY C2II {DLF,HYF,IEF}
 P43603238 CCC CG 133Y NEON GEM 171A

CE	3.4	MM	25	FAT	0.021
BW	2.7	M&G	61	REA	0.75
WW	72	MCE	0.4	MARB	0.41
YW	116	MCW	71	BMIS	507
DMI	0.5	UDDR	1.40	BIIS	618
SC	1.3	TEAT	1.40	CHBS	169
SCF	24.4	CW	86		



SEMEN: \$30/Straw; \$50/Certificate

- Maternal brother to National Reference Sire Test stand out Canyon Gem New Kid In Town 22F.
- Recognized as a top CHB sire for the breed.
- Ranked in the Top 10% for 11 traits.
- 10 calves at Canyon Gem averaged an 83 pound birth weight
- 324G is a prolific sire producing calves with plenty of style, growth, thickness, top and volume.



Daughter is CG 324G 281G Bandita 413L, 44443475
5 months



Son of 324G is Canyon Gem 324G 87F Gene 404K, 44403526
10 months



106 W. 5002
 Jerome, ID 83338
 Tim Dolcini 208-308-4083
 qualitytis@canyongemlivestock.com



THE BULL BUSINESS
 22993 Howe Rd.
 Caldwell, ID 83607
 Sam 208-880-9044
 Tucker 208-899-0455
 greg@shawcattle.com

NJW 11B 173D CHARACTER **178J ET**

{DLF,HYF,IEF,MSUDF,MDF}

P44272817

Calved: **2/26/2021** - Tattoo: **LE 178J/RE 11B**

CE	2.0
BW	4.3
WW	81 / 1%
YW	126 / 1%
DMI	0.4
SC	1.3 / 20%
SCF	21.5 / 11%
MM	30
M&G	70 / 4%
MCE	-1.2
MCW	114
UDDR	1.30 / 22%
TEAT	1.20
CW	92 / 3%
FAT	0.012 / 29%
REA	0.84 / 3%
MARB	0.11
BMS	466 / 5%
BIIS	565 / 4%
CHBS	151 / 7%



KCF BENNETT ENCORE Z311 ET {SOD}{CHB}{DLF,HYF,IEF,MSUDF,MDF,DBF}

NJW 79Z Z311 ENDURE 173D ET {CHB}{DLF,HYF,IEF,MSUDF,MDF,DBF}

P43722088 BW 91H 100W RITA 79Z ET {DLF,HYF,IEF,MSUDF,MDF}

LJR Q23R WHITMORE 10W {SOD}{DLF,HYF,IEF,MSUDF,MDF,DBF}

NJW 79Z 10W RITA 11B {DLF,HYF,IEF,MSUDF,MDF}

P43483038 BW 91H 100W RITA 79Z ET {DLF,HYF,IEF,MSUDF,MDF}

SEMEN:

\$35 / Straw

\$75 / Certificate

Contact Jim Reed



Fellow Breeders,

You may wonder why we haven't advertised the top selling bull in 2022 more heavily. Well, I'll admit that, despite my confidence in 178J, I'm slow to promote as a breeder until our animals prove themselves through their progeny. 178J has earned my backing this past year. He is proving himself in our herd and we are impressed with the reports and data coming in from other herds around the country.

178J is one of the best line-bred polled bulls to grace our breed in a long time. Any line-breeding program knows the importance of such a mating and the consistency it adds to the progeny. I know there has been a lot of Endure influence throughout our breed and rightfully so. However, 178J is bred like no other elite bull and I would encourage you to use 178J wherever possible.

178J is a free-moving, athletic bull and an aggressive breeder. He sires a very uniform calf crop. Both heifers and bulls are attractive with eye appeal and are out-performing his EPD data - hence the numbers going up. Weaned bull calves have the best early testicle development of any bull calves we have had to date. Heifers have a very feminine front end while maintaining extra power through the hip.

178J is full of Character and is free from any known genetic defect. Use 178J with full confidence.

Sincerely,

Bryson A. Westbrook

Four B Farm



Four B Farm

Bryson cell: 980-230-4868

Ed cell: 704-974-1407

1540 N. Post Rd, Shelby NC 28150



Ned and Jan Ward

Ned cell 307-751-8298

Jan cell 307-751-9470

njwardherefords@gmail.com

www.NJWHerefords.com

For semen contact:



Jim and Linda Reed

Call-Email-Text-Mail

660-527-3507 - 417-860-3102

reedent@iland.net

P.O. Box 126 - Green Ridge, MO 65332



BK CMCC KOOL PROFIT K001ET {DLF,HYF,IEF,MSUDF,MDF}

P44405442

Calved: 2/26/2022 - Tattoo: LE K001/RE CMCC

CHURCHILL PILGRIM 632D ET {DLF,HYF,IEF,MSUDF,MDF,DBP}

H THE PROFIT 8426 ET {DLF,HYF,IEF,MSUDF,MDF,DBF}

P43916400 RST GAT NST Y79D LADY 54B ET {DLF,HYF,IEF,MSUDF,MDF,DBF}

CHAC MASON 2214 {DLF,HYF,IEF}

BK DISTINCTIVE POINTS 641D ET {DLF,HYF,IEF,MSUDF}

P43732012 HAPP KOOL AID POINTS 1218 ET {DLF,HYF,IEF,MDF,DBF}

CE	-0.2	MM	34	FAT	0.001
BW	4.3	M&G	67	REA	0.85
WW	66	MCE	0.5	MARB	0.16
YW	117	MCW	156	BMIS	240
DMI	0.7	UDDR	1.20	BIIS	316
SC	0.6	TEAT	1.20	CHBS	142
SCF	6.6	CW	82		



SEMEN: 10 Straws for **\$1,500; \$75/Certificate**

- One of the most talked about bulls in OKC this year where he was Reserve Champion Polled Hereford Bull.
- His dam, BK Distinctive Points 641D ET, needs no introduction as she has stamped out numerous national champions for Buck Cattle Co. Not to mention she is a direct daughter of the great HAPP Kool Aid Points cow.
- He is elite in his look and presence and will demand the attention of many when hitting the ring as well as when selecting sires for AI.
- This young sire's skeleton and build is phenomenal when wanting to make elite functional females and powerful herd bulls.
- Don't be missing out and let Kool Profit work for you!



2023 Cattlemen's Congress Champion Polled Junior Bull Calf

mf
McDonald Farm

Scott McDonald
7791 Eastern Ave. S.E.
Grand Rapids, MI 49508
616-446-2146
scott@mcdonaldplumbing.com

Drew Flokstra, Herdsman
616-368-0818
drew.flokstra@gmail.com



Jiri, Brenda and Bailey Buck
18478 Cattle Dr.
Madill, OK 73446
580-795-4865
jiri@buckcattle.com
www.buckcattle.com

MOORE CATTLE CO.
Ethan Moore
P.O. Box 26
Madill, OK 73446
580-795-4740
emoore@oklahomasteel.com



BAR STAR FRESH PRINCE 018 ET {DLF,HYF,IEF,MSUDF,MDF}

P44163502

Calved: 2/26/2020 - Tattoo: BE 018

BAR S LHF 028 240 {CHB}{DLF,HYF,IEF}

BR BELLE AIR 6011 {CHB}{DLF,HYF,IEF,MSUDF,DBF}

43724674 BR BELLE 4082 ET {DLF,HYF,IEF,MSUDF}

STAR STROKE OGENIUS 91X ET {DLF,HYF,IEF,DBP}

BAR STAR 91X WHATAGIRL 410 {DLF,HYF,IEF,MSUDF,MDF,DBF}

P43516611 MOHICAN WHATAGIRL 6Y {DLF,HYF,IEF}

CE	4.5	MM	34	FAT	0.051
BW	0.6	M&G	66	REA	0.48
WW	64	MCE	1.4	MARB	0.32
YW	94	MCW	80	BMIS	447
DMI	0.4	UDDR	1.30	BIIS	545
SC	2.2	TEAT	1.30	CHBS	144
SCF	21.5	CW	82		



**SEMEN: \$125/Straw, 5 straw minimum;
Non-certificate**

- Fresh Prince has become the go-to sire for heifers!
- Calving ease and maternal traits are proving true in his first two calving seasons and yet he still gives them phenotype that works in the ring!
- Fresh Prince has proven in his first two calf crops the ability to sire extremely easy calving progeny across the country, the added quality he stamps into them adds value.
- Bar Star sold three heifer calf daughters to average \$16K as well as high sellers for McDonald Farms in the 2022 Breeders Cup sale and others across the country.

- He's a rare combination bull with a balanced genetic script that includes top 10% MARB and CHBS with the phenotype to produce big time herd bulls and show heifers at the same time.
- Recently, his first progeny was selected for a divisional champion in the bull show at the 2023 NWSS as well as a class winning heifer calf at the Fort Worth Stock Show.
- There's no reason to second guess your decision to breed with Fresh Prince this coming breeding season when you're adding value to your calf crop.



**BAR STAR FRESH
PRINCE 018 ET**

mf
McDonald Farm

Scott McDonald
7791 Eastern Ave. S.E.
Grand Rapids, MI 49508
616-446-2146
scott@mcdonaldplumbing.com

Drew Flokstra, Herdsman
616-368-0818
drew.flokstra@gmail.com

**Bar Star
CATTLE**

Chad and Stephanie Murnin
290 Jensen Rd.
Musselshell, MT 59059
Chad 406-399-7811
Stephanie 406-399-7815
barstarcattle@hotmail.com



H B DISTINCT {DLF,HYF,IEF,MSUDF,MDF,DBF}

P44184682

Calved: 2/8/2020 - Tattoo: BE 00049

CHURCHILL SENSATION 028X {SOD}{DLF,HYF,IEF,MDF,DBF}

NJW 160B 028X HISTORIC 81E ET {DLF,HYF,IEF,MSUDF,MDF,DBF}

P43829334 NJW 73S 38W DAYDREAM 160B {DLF,HYF,IEF,MSUDF}

LCX PERFECTO 11B ET {DLF,HYF,IEF,MSUDF}

H DS MISS SPICE 8082 {DLF,HYF,IEF,MSUDF,MDF,DBP}

P43915164 H BL MISS SPICE 613 ET {DLF,HYF,IEF,MSUDF,DBP}

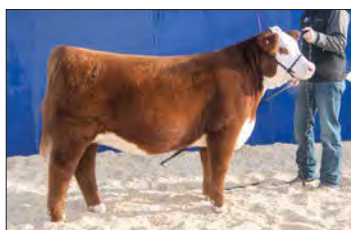
CE	10.4	MM	39	FAT	0.041
BW	0.6	M&G	74	REA	1.05
WW	70	MCE	6.0	MARB	0.25
YW	110	MCW	114	BMIS	471
DMI	0.8	UDDR	1.30	BIIS	567
SC	1.6	TEAT	1.40	CHBS	154
SCF	21.9	CW	94		



SEMEN: \$40/Straw; \$50/Certificate
Contact Jerry Huth, 920-251-0281 or jerry@huthcattle.com

HOMOZYGOUS POLLED!

- Trait leader: 16 traits
- Double digit CED
- Triple digit YW
- REA: 1.0
- Sale topping offspring
- Phenomenal daughters
- Slick haired
- Tested free for genetic defects



DISTINCT HEIFER
Ernst Herefords, Windsor, CO



HUTH CLC WF DELUXE K016
Son of Distinct, Huth Polled Herefords

HUTH
POLLED HEREFORDS

Jerry and Maryann Huth
W9096 County Trunk AS
Oakfield, WI 53065
920-251-0281
jerry@huthcattle.com

www.huthcattle.com

Chad and Stephanie Murnin
Musselshell, MT
Chad 406-399-7811
barstarcattle@hotmail.com
www.barstarcattle.com



Marshall and Barb 970-381-6316
Kevin and Courtney 970-218-7140
164 Hilltop Dr.
Windsor, CO 80550
www.ernstherefords.com



AVENALES CATTLE CO.
Daniel Sinton
P.O. Box 105
Shandon, CA 93461
805-748-4433
daniel@avenalesranch.com



CHURCHILL SMOKEY 3128L ET {DLF,HYF,IEF,MSUDF,MDF,DBF}

P44462190

Calved: 1/25/2023 - Tattoo: LE 3128

BOYD 31Z BLUEPRINT 6153 {DLF,HYF,IEF,MSUDF,MDF}
RST FINAL PRINT 0016 {DLF,HYF,IEF,MSUDF,MDF}
 P44178105 RST MS X651 TESTED 8032 {DLF,HYF,IEF,MSUDF,MDF,DBF}

EFBEEF BR VALIDATED B413 {CHB}{DLF,HYF,IEF,MSUDF,MDF,DBF}
BR VALIDATED B413 6035 7098 {DLF,HYF,IEF,MDF,DBF}
 P43857421 BR BENNETT 4R Y428 2101 6035 {HYP,DBP}

CE	13.6	MM	41	FAT	0.041
BW	-0.9	M&G	80	REA	0.84
WW	78	MCE	12.4	MARB	0.54
YW	114	MCW	71	BMI\$	528
DMI	1.1	UDDR	1.50	BIIS	655
SC	1.1	TEAT	1.50	CHBS	126
SCF	26.3	CW	86		



SEMEN: \$30 straws and 15 certificates for **\$5,000**
 There will be a few smaller packs of semen sold March 27,
 2024 in the Churchill World Class Frozen Genetics Sale.

- Smokey gives you as much CED to WW spread as any bull in the breed!
- Along with being in the top 2% for both CED and WW he also ranks in the top 1% of all Herefords for all these traits: Fertility, Milk, MG, MCE, MARB, and BMI\$!
- Along with outstanding numbers Smokey gives you a great look with exceptional depth of rib, length of body, width of base, pigment, clean sheath, large scrotum, and overall eye appeal.
- If you want to combine elite numbers with elite look in a polled package that blends today's best genetics, here he is!
- Smokey was a major private treaty transaction between Churchill Cattle and Jennings Land and Cattle and he will see heavy service in both herds.
- Canadian semen rights are owned by two of Canada's finest herds: Medonte Highlands and Glenlees Polled Herefords.
- Smokey froze high-quality semen before he was a year old!



BR VALIDATED B413 6035 7098
Dam of Churchill Smokey 3128L ET



1862 Yadon Rd. • Manhattan, MT 59741
 Office 406-284-6421 • Dale 406-580-6421
 churchillcattle@gmail.com
www.churchillcattle.com



JENNINGS LAND AND CATTLE
 27511 Route 111 • Palmyra, IL 62674
 Roger Jennings 217-825-6147
 Jake West 217-248-9525



BIRDWELL NEW STANDARD 2912 ET {DLF,HYF,IEF,MSUDF,MDF,DBF}

P44358760

Calved: 3/11/2022 - Tattoo: BE 2912

KCF BENNETT TRUST B279 ET {CHB}{DLF,HYF,IEF,MDF,DBC}

KCF BENNETT RESOLVE G595 {CHB}{DLF,HYF,IEF,MSUDF,MDF,DBF}

P44105347 KCF MISS TESTED C422 {DLF,HYF,IEF,MSUDF}

EFBEEF BR VALIDATED B413 {CHB}{DLF,HYF,IEF,MSUDF,MDF,DBF}

BR VALIDATED B413 6035 7098 {DLF,HYF,IEF,MDF,DBF}

P43857421 BR BENNETT 4R Y428 2101 6035 {HYP,DBP}

CE	6.7	MM	36	FAT	0.062
BW	0.2	M&G	70	REA	1.29
WW	69	MCE	3.9	MARB	0.73
YW	99	MCW	73	BMIS	544
DMI	0.7	UDDR	1.50	BIIS	671
SC	1.2	TEAT	1.60	CHBS	211
SCF	24.3	CW	103		



SEMEN PACKAGES: 20/Straw for \$3,500; \$100/Certificate. Sexed female semen sold at auction. Small quantities of foreign semen available. Contact Dale Venhuizen or Joel Birdwell

HOMOZYGOUS POLLED!

- A unique tool for the most discriminating breeder!
- In heavy use by some of the breed's best outfits!
- Has there ever been a bull that combines this level of carcass with this level of udder quality and fertility?
- Our early experience says he is heifer friendly.
- Very sound in his structure and makeup.
- First calves look extremely good as babies!
- Entered in the NSREP program at Olsen Ranches.



BR VALIDATED B413 6035 7098

Dam of New Standard



Dale and Nancy Venhuizen
1862 Yadon Rd. • Manhattan, MT 59741
Office 406-284-6421 • Dale 406-580-6421
churchillcattle@gmail.com
www.churchillcattle.com



BIRDWELL RANCH
Jim Birdwell 580-695-2352
Joel Birdwell 405-368-1058



CHURCHILL W4 SHERMAN 2157K ET {DLF,HYF,IEF,MSUDF,MDF,DBF}

P44378036

Calved: 2/7/2022 - Tattoo: LE 2157

KCF BENNETT TRUST B279 ET {CHB}{DLF,HYF,IEF,MDF,DBC}
KCF BENNETT RESOLVE G595 {CHB}{DLF,HYF,IEF,MSUDF,MDF,DBP}
 P44105347 KCF MISS TESTED C422 {DLF,HYF,IEF,MSUDF}

EXR BANKROLL 8130 ET {DLF,HYF,IEF,MDF,DBF}

CHURCHILL LADY 079H ET {DLF,HYF,IEF,MSUDF,MDF,DBF}
 P44149885 CHURCHILL LADY 7189E ET {DLF,HYF,IEF,MSUDF,MDF,DBF}

CE	3.6	MM	28	FAT	0.092
BW	1.6	M&G	60	REA	1.18
WW	65	MCE	1.7	MARB	0.40
YW	107	MCW	96	BMI\$	479
DMI	0.5	UDDR	1.40	BIIS	580
SC	2.0	TEAT	1.50	CHBS	191
SCF	20.6	CW	108		



SEMEN: \$100/Straw; Non-Certificate
 Sexed female sells at auction.
 Contact Dale Venhuizen or Jeff Chaffin

HOMOZYGOUS POLLED

- 205 weight 878 lb.; 365 weight 1,511 lb.; SC 41 cm.
- The record selling \$160,000 Churchill bull!
- Sherman is being used in volume by some of the very best Hereford ranches!
- Very efficient gain from weaning to yearling!
- Semen quality and quantity is fantastic!
- He ranks in top 1% for CHB and top 3% for BMI with very high udder scores.
- Sherman is dark red with red eyes, has excellent dark feet, an easy disposition, with extra bone and loads of body dimension!
- His dam is an ideal cow for us with two awesome natural calves and a beautiful udder!
- Entered in the NRSEP at Olsen Ranches



CHURCHILL W4 SHERMAN 2157K ET



1862 Yadon Rd. • Manhattan, MT 59741
 Office 406-284-6421 • Dale 406-580-6421
 churchillcattle@gmail.com
www.churchillcattle.com



1809 FM 927 • Morgan, TX 76671
 Office 254-635-4444 • Jeff Chaffin 254-396-2785
 jeff@w4ranch.com
www.w4ranch.com

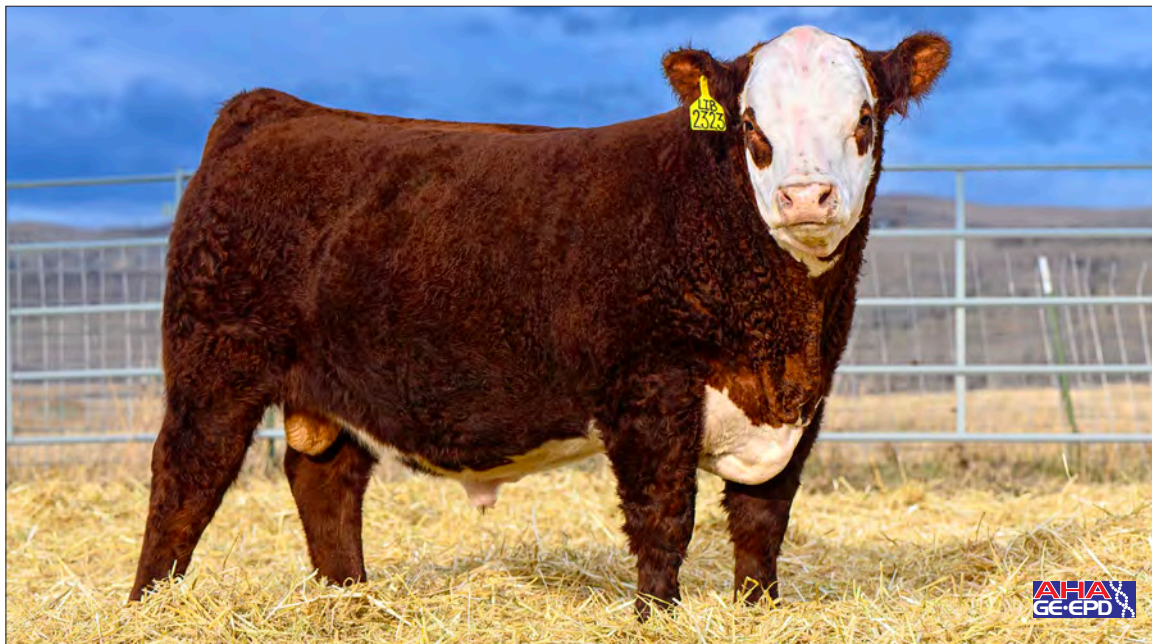
OTHER OWNERS:

Ade Polled Herefords
 Cane Creek
 Colyer Herefords

Bill King Ranch
 Topp Herefords
 XA Cattle Co

Rausch Herefords
 Storey Hereford Ranch
 Gene Stillhann

The Berry's
 3R Herefords



CHURCHILL DOC HOLIDAY ET {DLF,HYF,IEF,MSUDF,MDF,DBF}

P44484862

Calved: 11/24/2022 - Tattoo: LE 2323

KJ BJ 309C LEADER 182F {DLF,HYF,IEF,MSUDF,MDF,DBF}

KJ TWJ 907E LIBERTY I59H ET {DLF,HYF,IEF,MSUDF,MDF,DBF}

P44222757 KJ BJ 339A CHARDONNAY 907E ET {DLF,HYF,IEF,MSUDF,MDF,DBF}

EFBEEF BR VALIDATED B413 {CHB}{DLF,HYF,IEF,MSUDF,MDF,DBF}

BR VALIDATED B413 6035 7098 {DLF,HYF,IEF,MDF,DBF}

P43857421 BR BENNETT 4R Y428 2101 6035 {HYP,DBP}

CE	1.6	MM	37	FAT	0.071
BW	2.0	M&G	71	REA	1.12
WW	68	MCE	-0.5	MARB	0.62
YW	109	MCW	72	BMIS	486
DMI	0.7	UDDR	1.40	BIIS	604
SC	1.5	TEAT	1.30	CHBS	185
SCF	21.9	CW	90		



SEMEN: \$25 straws and 10 certificates for **\$4,000**
Contact Dale Venhuizen or Jake Rees

- Doc Holiday grabs your attention as fast as any bull you can imagine! With his color and pigment and shape and power he will stop you in your tracks!
- Like our other Liberty sons he has tremendous body dimension coupled with a very clean neck.
- Doc Holiday combines all this eye appeal with an amazing set of numbers. He is in the top 5% of the breed in 13 traits with top 2% BMI and top 1% CHB!
- If you are looking for a combination of elite look with elite numbers and all the pigment in the world, here he is!
- Oh yes, his dam is 7098!
- Doc Holiday was the high selling polled bull in the Churchill Sale at \$37,000 for half interest to Rees Bros and Harrell Herefords and Angus.



CHURCHILL DOC HOLIDAY ET



1862 Yadon Rd. • Manhattan, MT 59741
Office 406-284-6421 • Dale 406-580-6421
churchillcattle@gmail.com
www.churchillcattle.com



2225 East Rees Land • Morgan, UT 84050
Scott Rees 801-949-8960 • Jake Rees 801-668-8613
reescattle@gmail.com
www.reescattle.com



42590 Salmon Creek Rd. • Baker City, OR 97814
541-523-4402
beth@harrellherefordranch.com
www.harrellherefordranch.com



CL I DOMINO 0186H {CHB}{DLF,HYF,IEF,MSUDF,MDF}

44139007

Calved: 1/30/2020 - Tattoo: LE 186

HH ADVANCE 3297A ET {SOD}{CHB}{DLF,HYF,IEF}
HH ADVANCE 7156E ET {CHB}{DLF,HYF,IEF,MSUDF}
 43839853 HH MISS ADVANCE 1056Y ET {DOD}{DLF,HYF,IEF}

CL 1 DOMINO 386A 1ET {DLF,HYF,IEF}

CL I DOMINETTE 6162D {DLF,HYF,IEF,MSUDF}
 43691847 CL 1 DOMINETTE 055X {DOD}{DLF,HYF,IEF}

CE	5.4	MM	30	FAT	0.052
BW	-0.2	M&G	61	REA	0.69
WW	61	MCE	2.1	MARB	0.30
YW	99	MCW	67	BMIS	421
DMI	0.6	UDDR	1.40	BIIS	512
SC	1.7	TEAT	1.50	CHBS	152
SCF	19.5	CW	89		



SEMEN: \$50/Straw; 10 straw minimum;
\$75/Certificate. Volume discounts available.
 Contact Dale Venhuizen or Mark Cooper

- The lead off bull in the Cooper 2021 sale just like his son 267K was the lead off bull in the 2023 sale!
- Very unique in his type and kind; full of muscle and power in a moderate package. He has loads of rib shape and a very thick and deep rear quarter.
- 0186 looks to be a maternal giant with terrific daughters calving this spring with ideal mothering ability and high quality udders!
- His first sons dominated the 2023 Cooper sale and averaged \$27,000!
- 0186 is on his way to becoming one of the best L1 sires of our time; put him to work for you!



CL I DOMINO 267K
Son of 0186H



CHURCHILL LADY 205K
Daughter of 0186H



P.O. Box 126 - Willow Creek, MT 59760
 Mark Cooper 406-539-6885
 Dave Hanson 406-570-5519
 info@cooperherefords.com
www.cooperherefords.com



Dale and Nancy Venhuizen
 1862 Yadon Rd. - Manhattan, MT 59741
 Office 406-284-6421
 Dale 406-580-6421
 churchhillcattle@gmail.com
www.churchhillcattle.com



Dan Bixler
 Newton, IL
 618-562-3888



RST FINAL PRINT 0016 {DLF,HYF,IEF,MSUDF,MDF}

P44178105

Calved: 2/4/2020 - Tattoo: LE 0016

R LEADER 6964 {SOD}{DLF,HYF,IEF,MSUDF,DBF}
BOYD 31Z BLUEPRINT 6153 {DLF,HYF,IEF,MSUDF,MDF}
 P43764491 NJW 91H 100W RITA 31Z ET {DLF,HYF,IEF}

EFBEEF TFL U208 TESTED X651 ET {SOD}{CHB}{DLF,HYF,IEF,MSUDF}

RST MS X651 TESTED 8032 {DLF,HYF,IEF,MSUDF,MDF,DBF}
 P43954174 RST MS 0124 TIMESAWASTIN 6094 {DLF,HYF,IEF,MSUDP}

CE	10.3	MM	38	FAT	0.081
BW	-1.5	M&G	82	REA	0.63
WW	88	MCE	8.6	MARB	0.30
YW	130	MCW	88	BMI\$	445
DMI	1.3	UDDR	1.40	BIIS	566
SC	1.4	TEAT	1.40	CHBS	133
SCF	22.1	CW	88		



SEMEN: \$50/Straw; \$75/Certificate

- Final Print is unmatched for his combination of low birth weight, calving ease and high growth.
- He is a rare combination of outstanding numbers and excellent phenotype that you can use on cows and heifers.
- He is pigmented and freckle faced and is passing that along.
- Sons and daughters are in high demand topping sales across the country.
- His first daughters coming into production are showing great mothering ability with excellent udders.
- For semen and certificates contact Pete Atkins.



FINAL PRINT DAUGHTER
 2024 National Western Champion Polled Junior Heifer Calf
 Owned by Kennedy Jean Hoffman



Pete and Laura Atkins
 27132 SD Hwy. 17 - Tea, SD 57064
 605-351-9847 cell
 peteat15@gmail.com
www.atkinsherefords.com



Boyd Dvorak 605-491-7090
 Jeff Dvorak 605-491-2068
 dvorakboyd@yahoo.com
www.dvorakherefords.com



Bruce Thomas 406-544-1536
 Gold Creek, MT
 bruce@thomasherefords.com
www.thomasherefords.com



KSU LAND GRANT 153 ET {DLF,HYF,IEF,MSUDF,MDF}

P44231207

Calved: 1/25/2021 - Tattoo: BE 153

NJW 79Z Z311 ENDURE 173D ET {CHB}{DLF,HYF,IEF,MSUDF,MDF,DBF}

LOEWEN GENESIS G16 ET {CHB}{DLF,HYF,IEF,MDF,DBF}

P43987463 LOEWEN 77 48 MISS 344N 4RB42ET {DLF,HYF,DBP}

R LEADER 6964 {SOD}{DLF,HYF,IEF,MSUDF,DBF}

KSU MISS MISTY 956 ET {DLF,HYF,IEF,MSUDF}

P44007228 KJ 274S ROXY 482Y ET {DLF,HYF,IEF,MSUDF}

CE	7.9	MM	37	FAT	0.081
BW	1.0	M&G	68	REA	0.62
WW	63	MCE	8.4	MARB	0.20
YW	101	MCW	88	BMI\$	452
DMI	0.6	UDDR	1.30	BIIS	541
SC	1.0	TEAT	1.30	CHBS	132
SCF	22.3	CW	84		



SEMEN: \$50/Straw; \$75/Certificate
Contact Shane Werk 785-565-1881

- Homozygous polled
- Land Grant is a sire right for the times.
- He breeds on great pigment in a low birth weight homozygous polled package with added look and style.
- Progeny are big bodied, easy fleshing and stout. They are structurally correct with ideal feet and legs.
- Numerically, he offers a great birth to yearling spread with an 8 CED. He complements this with added maternal and carcass traits both at the top end of the breed.
- Land Grant checks every box! We have decided it is time to make this young stud readily available to breeders interested in using his genetics.

DAUGHTERS OF KSU LAND GRANT 153 ET



Delaney
HEREFORDS

Jerry and Shelly Delaney
2071 Co. Rd. 101 • Lake Benton, MN 56149
507-368-9284 • 507-820-0661
jdh@delaneyherefords.com
www.delaneyherefords.com

KANSAS STATE
UNIVERSITY
Department of Animal Science & Industry

218 Weber Hall
1424 Claffin Rd.
Manhattan, KS 66506
Shane Werk 785-565-1881
www.asi.k-state.edu

DVORAK HEREFORDS

Boyd Dvorak 605-491-7090
Jeff Dvorak 605-491-2068
dvorakboyd@yahoo.com
www.dvorakherefords.com

PÉREZ
CATTLE COMPANY

9767 Quay County Rd. K #0 • Nara Visa, NM 88430
575-633-2222
info@perezcattleco.com
www.perezcattleco.com

YOUR MOST TRUSTED SOURCE FOR SEMEN & CERTIFICATES FOR 49 YEARS!!

B
U
L
L
S

P
A
S
T

A
N
D

P
R
E
S
E
N
T

- AA PRF WIDELOAD
- AB JWR DEMOLITION 6008 3510
- AB PRINCE DOMINO
- AH JDH CRACKER JACK 26U
- BAR JZ TRADITION 434V
- BECKLEY 758P ONTIME 934S
- BKR TRIPLE PLUS 73C 20L
- BOYD MASTERPIECE 0220
- BOYD NJW STAND OUT 0091 ET
- BOYD POWERHOUSE 2028
- BOYD WORLDWIDE 9050
- BR CSF WALLACE 7055 ET
- BR CURRENCY 8144 ET
- BR DESERT RED 6059
- BR DM CHANNING
- BR DM TNT 7010
- BRAXTON GIANT 1
- BT CL DOMINO 15G
- C L1 DOMINO 0130X
- C L1 DOMINO 477
- C R111 SENTINEL 2264 ET
- C ETF WILDCAT 4248
- C RENO 6142 ET
- C STOCKMAN 2059
- C&L CT FEDERAL 485T 6Y
- C -S PURE GOLD 98170
- CARPEDIEM
- CH HAWK ENUFF PROFIT 2913
- CHAC MASON 2214
- CHURCHILL A1
- CHURCHILL COWBOY 1201Y ET
- CHURCHILL KICKSTART 501C ET
- CHURCHILL RANCHER 592R
- CHURCHILL RED BULL 200Z
- CHURCHILL SENSATION 028X
- CHURCHILL STUD 3134A
- CMF 1037 VICTOR 262D
- CMF 584T FRONTIER 634L
- CMF 676M ON TARGET 837S
- CMR ILR DOMINO 86P
- CMR THE PROGRAM A431
- CMR TF 242 GARRETT 430
- CPH 4037 GOODNIGHT 23Z
- CRR 719 CATAPULT 109
- CRR ABOUT TIME 743
- CS BOOMER 29F
- DB GRAND SLAM
- DB HARDRIVE ET
- DELHAWK CAPTIAL 0810
- DELHAWK KAHUNA 1009 ET
- DKF RO CHIEF 4102 55
- DM BR L1 DOMINO 146
- DM JVR POWERHOUSE 2028
- DM WORLD CLASS 579A
- EFBEEF U208 SURE BET 7002
- EKS 127R SIR PATRICK
- ENFORCER 107H
- FCC 7M PRIDE 35
- FCC 7M QUANTUM 2U
- FELTON 517
- FELTONS BREAKTHROUGH
- FELTONS ENDURANCE 745
- FELTONS LEGEND 242

- FELTONS OZZIE 492
- GERBER KAISER 078K
- GERBER WATCHFIRE 117F
- GH NEON 17N
- GH RAMBO 279R
- GK 327 VINDICATOR 486S
- GKB 88X LARAMIE B293
- GLENGROVE LJR MONTY M7
- GO 3196 ADVANCE S109
- GOLDEN ACHIEVER 2042
- GOLDEN OAK FUSION 3S
- GRANDVIEW 70AKS SONORA 145R
- GRANDVIEW CMR NO WORRIES 9064
- GRANDVIEW MC HED CR
- GV CMB
- GV CMB
- GV CMB
- GV CMB
- H 8E EX
- H BALD
- H BK C
- H DIMA
- H EXC
- H H PE
- H W4 C
- H WR P
- H WC
- HARVIE
- HARVIE
- HARVIE
- HARVIE
- HARVIE
- HARVIE
- HARVIE
- HB STAR
- HCC LE
- HCCTRO
- H EASY DEAL 609 ET
- HF 4L BEYOND 36N
- HH ADVANCE 1098Y
- HRP CES VICTOR 964 44B
- HRP THM VICTOR 109W 9329 "RUSTY"
- HYALITON LARGELY 436
- ILR 200
- JB LCC QUAGMIRE 506
- K&B SENTINEL 0042X
- KCF BENNETT 3008 M326
- KCF BENNETT 3010 M326
- KCF BENNETT ADDITION 526Z
- KCF BENNETT BLUE DUNE 4260
- KCF BENNETT FUSION 526Z
- KCF BENNETT M326 5342
- KJ 0681 MANHATTAN 262S
- KJ 901E SCOUT 346Z
- KJ 968R POLLED SOLUTION 668Z
- KJ BUNION WILLOW 667E
- KJ CBJ 2011 LOGIC 94S
- KJ C&L J119 LOGIC 023R ET
- KJ HVH 33N REDEEM 485T ET
- KJ TMG 226K TEBOW 646Z
- KLONDIKE 28U 707B

- KT JOHN WAYNE 7167
- KT TOP SECRET 1030
- L3 WINN RAMBO 851
- LAGRAND RELOAD 80P
- LANGFORD 2020 VISION
- LCC BACK N TIME ET
- LCC FBF TIME TRAVELER 480
- LJR 023R WHITMORE 10W
- LJR MSU GF COLD FUSION 52Z ET
- LOEWEN 33T 19W
- MC RANGER 9615
- MCR TRUST HARLAND 364 ET
- MOHICAN EUREKA 67J
- MOHICAN SUMMIT 41S ET
- NJW BW TRAILDUST 161L
- NS KENO 005
- NS LAKES KILO 002
- OR DOM 549 F243
- PHH PCC 812 TRUE GRIT 002
- PURPLE CURRENCY 242U ET
- PURPLE HAWK 2020 242U ET
- PURPLE MB W/ MANIZER 14U ET
- PURPLE MILSAP 45S
- PURPLE REUBEN JAMES 40A ET
- PW BAR B PHANTOM
- PW BAR B PHANTOM
- PW MOHICAN NASDAQ P316
- PW MTR LE 301E P690
- PWF VICTORY LANE P415
- REMITALL BOONME 8E
- REMITALL EMBRACER 8E
- REMITALL FV 236E
- REMITALL PATRIOT ET 13P
- RFBALANCE STE 66 346R ET
- RF 156T MR MATERNAL 63A
- RF 156T MR MATERNAL 63A
- RF POSITIVE PLUS 73C
- RHF IGT VICTOR 103T
- RL BIG TIME 005B

- RS 45P MAGNUM 91Y
- RST 1030 TOP SECRET 7011
- SB 54E 75R FUSION 138X ET
- SB 122L GIT-R-DONE 19R ET
- SCHU-LAR ON TARGET 22S
- SFR DEAL OR NO DEAL ET
- SHF ALL STAR 42X A191
- SHF INTERSTATE 20X D03
- SHF KENNEDY 502R X36
- SHF LIMELIGHT W18 Y83
- SHF LITERAL W18 Y91
- SHF MARSHAL 236G M33
- SHF PHOENIX M33 P68
- SHF RADAR M326 R125
- SHF VISION R117 U38
- SHF WONDER M326 W18
- SHF WYATT P20 W013
- SHF YORK 19H Y02
- SHOWTIME EXCEED 230
- SLDK VENDETTA V-9 ET
- SSF JJD SHREK 669
- STAR 12G PALLIADIN 115N
- STAR 8006 ENYETO 163M ET
- STAR BRIGHT VISION 533P
- STAR GERBER FUTURE 053
- STAR KKH SSF BRIGHT KELLY 408 ET
- STAR KKH SSF TYMELESS 506X
- STAR MARKET INDEX 70X ET
- STAR OBF BOGART 5L
- STAR PPL BULLET 388T ET
- STAR TCF SHOCK & AWE 158W ET
- TDP CROSSOVER Z400
- TDP VINTAGE 402U ET
- TFR CYRUS 225 ET
- TH 75J 243R BAILOUT 144U
- TH 122 711 VICTOR 719T
- TH 133U 719T UPGRADE 69X
- TH SHR 605 57G BISMARCK 243R ET
- THM DURANGO 4037
- THM EASY CHOICE 5052
- THM SLEEP EASY 3060
- TR7 44C TOTAL L176 5010
- TR GENETIC CHOICE 7084
- UPS JOURNEY 1ET 42
- UPS ODYSSEY
- UPS TCC NITRO 1ET
- WALKER AUTHOR X51 W19 332
- WHITEHAWK 4R REVOLUTION 2328
- WIDE ANGLE
- WOBRR OWEN TANKERAY Y79D
- WSB BOSS LE 301E WDR76 ET



A very deep appreciation to all of our customers for 49 years.

ONE STOP SHOPPING FOR ALL YOUR SEMEN AND CERTIFICATE NEEDS. ACCESS OUR WEBSITE WWW.REEDENT.COM FOR PEDIGREES, PICTURES AND EPDS. IF YOU DON'T SEE IT — CALL!

REED ENTERPRISES

Jim and Linda Reed
 Call • Email • Text • Mail
 660-527-3507 • reedent@iland.net • 417-860-3102
 P.O. Box 126 • Green Ridge, MO 65332

2024 AI BOOK

Clip and Send to Reed Enterprises, P.O. Box 126, Green Ridge, MO 65332 for semen price list and order forms

Name _____
 Address _____
 Phone _____
 Email _____



C&L RR KJ 364C JALAPENO 973E {DLF,HYF,IEF,MSUDF}

P43844129

Calved: 4/12/2017- Tattoo: BE 973E

HYALITE ON TARGET 936 {SOD}{DLF,CHB}{DLF,HYF,IEF,MSUDC}
R LEADER 6964 {SOD}{DLF,HYF,IEF,MSUDF,DBF}
 P43500058 R MISS REVOLUTION 1009 {DOD}{DLF,HYF,IEF,DBP}
 CRR 719 CATAPULT 109 {SOD}{DLF,HYF,IEF,MDF}
KJ BJ DWE 686Z SALSA 364C ET {DLF,HYF,IEF,MSUDF,MDF,DBF}
 P43585785 KJ 968R ZSA ZSA 686Z ET {DLF,HYF,IEF,MDF,DBF}

CE	7.4	MM	32	FAT	0.032
BW	1.7	M&G	70	REA	0.42
WW	75	MCE	-1.0	MARB	0.15
YW	104	MCW	93	BMIS	307
DMI	0.6	UDDR	1.30	BIIS	400
SC	1.6	TEAT	1.30	CHBS	115
SCF	13.2	CW	75		



SEMEN: \$25/Straw; \$75/Certificate.
 Volume discount: 25 straws for \$500
 Contact: Reed Enterprises 660-527-3507

- HOMOZYGOUS POLLED!
- Heifer approved.
- Jalapeno is an exceptional son of Leader, out of Salsa. He excels in phenotype, structure and has an incredible foot.
- Trait leader for CE, WW, SC, MM and M&G.
- Progeny have tremendous eye appeal and style.
- Daughters in production have high quality udder shape and ideal teat structure. Daughters maintain a 107.7 weaning ratio.



Maternal brother to KJ MHPH RW 364C Media 240J ET, a million dollar bull.



KJ BJ DWE 686Z SALSA 364C ET
 One of the premier cows in the breed. Jalapeno was her first calf and a natural calf.



Jim and Linda Reed
 Craig, Natalie, Macy, Mallory & Maggie Reed
 Brian, Samara and Terrell Reed
 P.O. Box 126 - Green Ridge, MO 65332
 660-527-3507 • Fax 660-527-3379
 reedent@iland.net / www.reedent.com



Marty Lueck, manager
 Rt. 1, Box 85G
 Mountain Grove, MO 65711
 417-948-2669 or 417-838-1482
 mvlueck@centurytel.net



Matt, Barb, Tye and Makayla Reynolds
 1071 County Rd. 1231
 Huntsville, MO 65259
 Matt 660-676-3788 • Barb 660-676-4788
 reynoldscattle@cvalley.net
www.reynoldsherefords.com

RPC JCS 7119 007

RUBBLE

(DBF,DLF,HYF, IEF,MSUDF,MDF) | REG#: 44376473

210



\$2,000/package:
10 Straws
5 Certificates
 (All other certificates will be \$100)

Rubble was recently crowned the National Champion Bull at Cattleman's Congress and went on to be selected Top 5 Supreme Overall. He then went on to be Reserve Champion Bull at Ft. Worth.

We feel what he offers goes way beyond the show ring. This is a true herd bull that shows well. You'll be hard pressed to find a bull with his progressive genetics from an EPD standpoint, but is even more impressive phenotypically.

Perfectly marked, fully pigmented, freckles, and red to the ground.

His dam, 7119, is a brood cow deluxe with overwhelming body thickness, a great udder, and a flawless structure.

BR HUTTON 4030ET
 {DLF,HYF,IEF,MSUDF}

NJW 73S 980 HUTTON 109Z ET
 {DLF,HYF,IEF,MSUDF,MDF}

BR ER BIG COUNTRY 007 ET
 {DLF,HYF,IEF,MSUDF,MDF}

PCC NEW MEXICO LADY 7119 ET
 {DLF,HYF,IEF,MSUDF}

BR BELLE 4082 ET
 {DLF,HYF,IEF,MSUDF}

UPS MISS NAVARRO 1029
 {DLF,HYF,IEF}

CE	BW	WW	YW	DMI	SC	SCF	HM
4.2	4.4	71	120	0.5	0.9	16	36
MG	MCE	MCW	UDDR	TEAT	CW	FAT	REA
72	4.8	131	1.4	1.4	92	-0.039	0.93
MARB	BMI	BII	CHG				
0.23	398	489	169				



PCC NEW MEXICO LADY 7119 ET
 DAM OF RUBBLE



NATIONAL CHAMPION HEREFORD BULL
CATTLEMAN'S CONGRESS 2024

RUNNING R
 CATTLE CO

DREW, LAUREN, MILA
 AND MYLES PEREZ
 CANYON, TEXAS

DREW: 806-640-8340
 DREW@RUNNINGPCATTLE.COM

Copeland
 & SONS, LLC
Herefords

CLIFF & PAT COPELAND
 575-403-8123
 C3COPELAND@PLATEAUTEL.NET

MATT, ALYSSA, CALLY JO & KINLEY COPELAND
 M-580-336-8284 A-731-499-3356
 ALYSSA@COPELANDHEREFORDS.COM



STELLPFLUG GUNSMOKE 222 ET {DLF,HYF,IEF,MSUDF,MDF,DBF}

P44400396

Calved: 2/11/2022 - Tattoo: BE 222

JDH 11B STUD 3134 63E {CHB}{DLF,HYF,IEF,MSUDF,MDF,DBF}

JDH AH BENTON 8C ET {CHB}{DLF,HYF,IEF,MSUDF,MDF,DBF}

P44014184 JDH AH MS 34X VICTOR 33Z45C ET {DLF,HYF,IEF,MSUDF}

INNISFAIL WHR X651/723 4013 ET {CHB}{DLF,HYF,IEF,MSUDF,MDF}

NJW 202C 4013 HOMEMAKER 90H ET {DLF,HYF,IEF,MSUDF,MDF}

P44169323 NJW 160Z 8Y HOME MAKER 202C {DLF,HYF,IEF,MSUDF,MDC,DBF}

CE	1.6	MM	33	FAT	0.082
BW	2.9	M&G	71	REA	1.04
WW	76	MCE	2.0	MARB	0.40
YW	124	MCW	133	BMI\$	467
DMI	0.4	UDDR	1.50	BIIS	578
SC	1.4	TEAT	1.50	CHBS	201
SCF	18.9	CW	111		



**SEMEN: \$100/Straw/10 straw minimum;
\$100/Certificate — Contact Don Brumley**

- The most talked about bull this fall and winter!
- Top 1% in the breed for 6 traits including: WW, YW, UDDR, CW, REA and CHBS
- Top 5% in the breed, or better, for 11 Traits including: MG, TEAT, MARB, BMI\$ and BIIS
- Gunsmoke is unmatched in his ability to combine phenomenal phenotype and incredible genotype. His dam, 90H, is the maternal powerhouse from the NJW program that demanded \$60,000 as a yearling heifer. His sire, Benton, is the carcass sire adding extra look, length, and pounds.
- It isn't often you can find a bull of this quality that brings BOTH carcass merit and maternal strength to the table.
- If you're looking to put BALANCE in your herd, look no further!



STELLPFLUG GUNSMOKE 222 ET



**NJW 202C
4013 HOMEMAKER 90H ET**
Dam of Stellpflug Gunsmoke 222 ET



Don Brumley 209-479-0287
orovadaherefords@aol.com
www.brumleyfarms.com



BK JET SMOOTH J18 ET
#44372193

JDH AH Standout 16G ET JDH 11B Stud 3134 63E
 JDH AH MS 34X Victor 33Z45C
 HAPP Kool Aid Points 1218 Delhawk Kahuna 1009 ET
 Crane Style Points 945

CE: -0.8	SC: 1.4	MCW: 86	REA: 1.05
BW: 3.2	SCF: 19.3	UDDR: 1.2	MARB: 0.03
WW: 63	MM: 29	TEAT: 1.3	BMI: 419
YW: 105	MG: 60	CW: 93	BII: 491
DMI: 0.7	MCE: 1.3	FAT: 0.011	CHB: 137

Owned with Ella Weldon and 6 Mile Creek
 Semen \$100/ unit certificates \$75/ each
 '24 Cattlemen's Congress Grand Champion Polled Bull
 & '24 Fort Worth Stock Show Reserve Grand Champion Bull



TCW RENO 81E 201K
#44394541

NJW 160B 028X Historic 81E Churchill Sensation 028X
 NJW 73S 38W Daydream 160B
 NJW 73S W18 Hometown 10Y ET
 TCW Call Girl 10Y 807F TCW Call Girl 187Z 505C

CE: 6	SC: 1.11	MCW: 104	REA: 0.80
BW: 0.9	SCF: 26.2	UDDR: 1.3	MARB: 0.10
WW: 6	MM: 38	TEAT: 1.5	BMI: 507
YW: 105	MG: 71	CW: 89	BII: 594
DMI: 1	MCE: 1.7	FAT: 0.051	CHB: 125

Owned with Weimer Cattle Co.
 Semen \$50/ unit. Non Certificate sire (*Volume Discount Available*)
 '23 Western Nugget Reserve Grand Champion Horned Bull
 Calving ease, excellent maternal and trait leading carcass value!



JIRL, BRENDA & BAILEY BUCK
 580.795.4865 mobile | jirl@buckcattle.com | www.buckcattle.com | Madill, OK 73446
 Matt Scasta, 580.220.7288 | Davey Young, 931.478.0527 | Matt Loggains, 870.373.0646

SPRING EDITION SALE, March 30th • FALL PREMIER SALE, October 12th • BULLS FOR SALE AT PRIVATE TREATY

WHERE CHAMPIONS ARE A TRADITION.

CRR 66589 Balance 107

{DLF,HYF,IEF,MSUDF,MDF}



CE	8.7	MCW	102
BW	-0.5	UDDR	1.30
WW	72	TEAT	1.30
YW	114	CW	88
DMI	1.2	FAT	0.121
SC	1.6	REA	0.66
SCF	24.3	MARB	0.14
MM	38	BMSI	466
M&G	74	BIIS	563
MCE	-1.1	CHBS	114

Reg. No. **P44296384**
Calved: 2/1/2021 • Tattoo: BE 107



R LEADER 6964 {SOD}{DLF,HYF,IEF,MSUDF,DBF}
/S MANDATE 66589 ET {CHB}{DLF,HYF,IEF,MSUDF,MDF,DBF}
P43834732 /S LADY DOMINO 0158X {DLF,HYF,IEF}

NJW 73S W18 HOMEGROWN 8Y ET {SOD}{DLF,HYF,IEF,MSUDF,MDC,DBF}
CRR 8Y ECLIPSE 9102 {DLF,HYF,IEF,MSUDF,MDC}
P44073981 CRR 021 ECLIPSE 281 {DOD}{DLF,HYP}

- **HOMOZYGOUS POLLED**
- *Balanced set of numbers with a BIG spread*
- *Super sound with a beautiful stride*
- *Impeccable phenotype*
- *Member of CRR's 2022 NWSS Champion Pen of Three*
- *Proven calving ease with performance and quality*



Balance Heifer Calf



Balance Bull Calf

Semen: **\$50** / Straw; Non-certificate



18300 Co. Rd. 43 • La Salle, CO 80645
Jane Evans Cornelius • 970-371-0500 cell
Hampton and Kay • 970-396-2935 cell
www.coyoteridgeherefords.com

HMEHEREFORDS

Hardy Edwards / 505 Lem Edwards Rd. • Winterville, GA 30683
Hardy 706-714-9012 • Kim 706-206-6725
www.HMEherefords.com



KLD RW MOMENTUM D731 ET {DLF,HYF,IEF}

43885724

Calved: 4/13/2017 - Tattoo: BE D731

SHF RIB EYE M326 R117 {SOD}{CHB}{DLF,HYF,IEF}

NJW 98S R117 RIBEYE 88X ET {SOD}{DLF,HYF,IEF,MSUDF,MDF,DBF}

43094146 NJW 9126J DEW DOMINO 98S {DOD}{DLF,HYF,IEF}

RW KW HUMMER K23 3078 {DLF,HYF,IEF}

RW MINDY 3078 6096 {DLF,HYF,IEF,MSUDF}

P42733879 RW DEDE 23C 9145 {HYP}

CE	10.8	MM	29	FAT	-0.009
BW	0.7	M&G	54	REA	0.42
WW	49	MCE	2.4	MARB	0.16
YW	75	MCW	66	BMIS	335
DMI	-0.1	UDDR	1.20	BIIS	403
SC	0.6	TEAT	1.30	CHBS	108
SCF	15.7	CW	54		

SEMEN: \$30/Straw; \$65/Certificate



- Momentum is the result of a mating of two of the Hereford breeds elite icons; 88X, the sire that is making a historical maternal impact and RW Mindy 3078 6096, who has been one of the highest dollar producing females EVER!
- Momentum is fault free in every aspect, pedigree, EPD profile and phenotype. He is the soundest structured bull we have seen.
- He was a Louisville division champion and his tremendous full sister was crowned the 2018 JNHE Grand Champion Cow/Calf Pair
- We think he is the bull to make good ones BETTER!



103 Earl McGuffee Rd. - New Hebron, MS 39140

Joe McGuffee 601-672-0245

Ryan McGuffee 601-668-1000

ryanmcgu@bellsouth.net

Bobby Singleton 615-708-1034

www.mcguffeeherefords.com

SHF KNUCKLE H324 K252 {DLF,HYF,IEF,MSUDF}



P44341123

Calved: 2/20/2022 - Tattoo: BE K252

CE	1.8	MM	40	FAT	0.011
BW	3.7	M&G	83	REA	0.66
WW	85	MCE	1.5	MARB	0.21
YW	144	MCW	131	BMI\$	299
DMI	1.0	UDDR	1.20	BIIS	401
SC	2.3	TEAT	1.20	CHBS	142
SCF	11.1	CW	83		



SEMEN: \$40/Straw; Non-Certificate

SHF EVERSTONE Z311 E156 {CHB}{DLF,HYF,IEF,MSUDF,MDF,DBF}

SHF HUCKLEBERRY E156 H324 ET {CHB}{DLF,HYF,IEF,MSUDF,MDF}

P44123829

SHF TIME 001A D81 {DLF,HYF,IEF,MDF,DBF}

SHF ALL AMERICAN LG A70 {SOD}{DLF,HYF,IEF,MSUDF,MDF,DBF}

SHF MAGGIE A70 C59 {DOD}{DLF,HYF,IEF,MSUDF}

P43587225

SHF MAGGIE U38 Y80 {DLF,HYF,IEF}

- K252 has the "wow" when you see him with dark red google eye, big frame, and lot of bull
- K252 also has four traits in the 1\$ being WW, YW, SE, MG, and MM 2%.
- K252 will put growth back in your cattle with a lot of eye appeal.
- Non-certificate AI is applied for on this bull.

KRM 9160 FOLLOW ME 8G L35 ET {DLF,HYF,IEF,MSUDF}



P44460921

Calved: 2/3/2023 - Tattoo: LE L35/RE KRM

CE	3.6	MM	30	FAT	0.011
BW	2.4	M&G	62	REA	0.90
WW	65	MCE	5.8	MARB	0.30
YW	96	MCW	99	BMI\$	558
DMI	0.2	UDDR	1.50	BIIS	656
SC	0.6	TEAT	1.50	CHBS	165
SCF	27.2	CW	91		



SEMEN: \$30/Straw; \$70/Certificate

JDH 11B STUD 3134 63E {CHB}{DLF,HYF,IEF,MSUDF,MDF,DBF}

JDH AH BENTON 8G ET {CHB}{DLF,HYF,IEF,MSUDF,MDF,DBF}

P44014184

JDH AH MS 34X VICTOR 33245C ET {DLF,HYF,IEF,MSUDF}

NJW 79Z Z311 ENDURE 173D ET {CHB}{DLF,HYF,IEF,MSUDF,MDF,DBF}

UPS MISS ENDURE 9160 {DLF,HYF,IEF,MSUDF}

P44051070

UPS MISS 88X RIBEYE 4435 ET

- L35 is a Benton 8G son out of an Endure daughter that was purchased from Upstream Ranch.
- L35 is as flawless in his design and as complete as any bull that you will find, big footed, thick and lots of middle.
- This bull is impressive from every angle and will add the look that Hereford breeders desire.



103 Earl McGuffee Rd. • New Hebron, MS 39140

Joe McGuffee 601-672-0245

Ryan McGuffee 601-668-1000

ryanmcgu@bellsouth.net

Bobby Singleton 615-708-1034

www.mcgufeeherfords.com

DEFINING THE LOGOS

USED IN THE AHA AI BOOK



AHA GE-EPD

This logo highlights animals that have been genotyped through the AHA official DNA lab. That genotype will be used along with pedigree, phenotypic and progeny information for a more reliable EPD.



NON-CERTIFICATE A.I. PROGRAM

If an A.I. sire has this designation, the progeny from this sire does not need an A.I. certificate for registration.



NATIONAL REFERENCE SIRE PROGRAM

The American Hereford Association (AHA) National Reference Sire Program (NRSP) is a program that allows Hereford breeders to test young sires in real-world commercial settings.



HEREFORD ADVANTAGE

This logo identifies bulls that rank in the top 50% of the breed for the Certified Hereford Beef Index (CHB\$). Feeder cattle sired by these bulls are eligible to be enrolled in the Hereford Advantage program through IMI Global.



MATERNAL ADVANTAGE

This logo identifies bulls that rank in the top 50% of the breed for the Baldy Maternal Index (BMI\$), or top 50% of the breed for Brahman Influence Index (BI\$). Commercial Hereford x British cross or Hereford x Brahman cross replacement females sired by these bulls are eligible to be enrolled in the Maternal Advantage program.



PREMIUM RED BALDY

This logo identifies bulls that rank in the top 50% of the breed for the Baldy Maternal Index (BMI\$). Commercial Hereford x Red Angus replacement females sired by these bulls are eligible to be enrolled in the Premium Red Baldy program.



BR GKB WINCHESTER I314 {DLF,HYF,IEF,MSUDF,MDF,DBF}

44300997

Calved: 9/19/2021 - Tattoo: BE 1314

BR BELLE AIR 6011 {CHB}{DLF,HYF,IEF,MSUDF,DBF}

BR BELLE AIR EI33 ET {CHB}{DLF,HYF,IEF}

43932137 BR ABIGAIL 8130 ET {DLF,HYF,IEF}

CRR 719 CATAPULT 109 {SOD}{DLF,HYF,IEF,MDF}

BR ANASTASIA EI17 ET {DLF,HYF,IEF,MSUDF,MDF,DBF}

44090448 BR ANASTASIA 3023 ET {DLF,HYF,IEF,DBF}

CE	-2.6	MM	29	FAT	0.001
BW	4.4	M&G	68	REA	0.46
WW	77	MCE	-0.9	MARB	0.28
YW	125	MCW	110	BMI\$	291
DMI	0.8	UDDR	1.30	BIIS	392
SC	1.8	TEAT	1.20	CHBS	134
SCF	11.6	CW	75		



**SEMEN: \$300/Straw (minimum of 5 units);
\$100/Certificate**

- 2023 Oklahoma City Champion Bull
- 2023 Denver Champion Bull
- 2023 Ft. Worth Stock Show Champion Bull
- 2024 Ft. Worth Stock Show Champion Bull
- Contact Winchester Semen Sales, 254-440-1440, ask for Shelby Conley or Kendall Gaston.



BR ANASTASIA EI17 ET

Dam of Winchester



Brett Barber 806-681-2457
Justin Barber 806-681-5528
Dale & Mary Barber
office@barberranch.com

www.barberranch.com
10175 FM 3138 • Channing, TX 79018



Gary and Kathy Buchholz
Gary 214-537-1285 • gary@gkbcattle.com
Herdsmen: Jay Creamer 254-707-2199
jay@gkbcattle.com



Guy 208-599-0340 • Kyle 208-250-3924
31058 Colyer Rd. • Bruneau, ID 83604
www.hereford.com



2202 North 11th St. • Yukon, OK 73099
800-664-3977

www.expressranches.com



www.curryherefords.com

Curtis, Matt and Staci
Cameron and Bailey
498 Big Horn Rd. • McAlester, OK 74501
Curtis 918-521-4629
curtis.curry@american-national.com
Cameron 918-470-5221
Steven, April, Macy and Cooper Curry
Okemah, OK
Steven 918-623-6677



GENOA 60II BELLE AIR 1909I {DLF,HYF,IEF,MSUDF}

P4401189I

Calved: 2/26/2019 - Tattoo: LE 9091

BAR S LHF 028 240 {CHB}{DLF,HYF,IEF}
BR BELLE AIR 60II {CHB}{DLF,HYF,IEF,MSUDF,DBF}
 43724674 BR BELLE 4082 ET {DLF,HYF,IEF,MSUDF}

NJW 73S W18 HOMETOWN 10Y ET {SOD}{CHB}{DLF,HYF,IEF,MSUDF,MDC}

GENOA MISS HOMETOWN 10Y 15047 {DLF,HYF,IEF,MSUDF,MDF}
 P43585109 HYALITE TS LASS 547 {DLP,HYP}

CE	-2.1	MM	31	FAT	0.061
BW	3.3	M&G	65	REA	0.43
WW	69	MCE	-4.0	MARB	0.58
YW	114	MCW	122	BMIS	487
DMI	0.7	UDDR	1.30	BIIS	608
SC	2.9	TEAT	1.20	CHBS	167
SCF	23.3	CW	81		



SEMEN: \$35/Straw; \$40/Certificate
 Contacts: Bob Coker, 916-539-1987 • Chris Beck, 618-367-5397
 Jody Standley, 919-291-4212 • Kim Prestwood, 828-320-7317

- Adj. BW 85 lb., Adj. WW 667 lb., Adj. YW 1,145 lb., Adj. REA 11.36, **actual MARB 5.35**, Adj. FAT 0.09
- This Belle Air son is unique in his phenotype and genotype. 1909I is moderate, powerful, wide, extremely shapely and correct in his structure, short marked and red to the ground.
- Actual data and EPDs that read impressive and accurate and can propel the Hereford breed forward, posting a big BW to YW spread and actual MARB of 5.35, ratioing 240% among his contemporaries.
- Top 1% SC, MARB, CHBS; Top 5% BIIS, Top 10% WW, YW, M&G, BMIS
- His dam, Genoa Miss Hometown 10Y 15047, is feminine, functional and the easiest doing donor in the Genoa herd, posting excellent production ratios.
- First 41 calves: BW ratio of 98.8%



GENOA MISS HOMETOWN 10Y 15047

Production ratios: BW 5 at 99, WW 5 at 107; YW 4 at 105;
 SC 5 at 39.7; REA 17 at 107; MARB 17 at 115

GENOA LIVESTOCK

A Balanced Approach to
 Performance Hereford Genetics

BOB COKER
 Owner 916-539-1987
 Chris Beck, Manager 618-367-5397
 640 Genoa Lane • Minden, NV 89423
www.website.com



JODY STANDLEY
 Owner 919-291-4212
 Farm Address:
 84 Austin Farm Lane • Clayton, NC 27520



CHURCHILL BR 5JNATIONWIDE I79J {DLF,HYF,IEF,MSUDF,MDF}

P44268920

Calved: 1/25/2021 - Tattoo: LE 179

CL 1 DOMINO 7131E 1ET {CHB}{DLF,HYF,IEF,MSUDF}
CL 1 DOMINO 942C {CHB}{DLF,HYF,IEF,MSUDF,MDF}
 44010158 CL 1 DOMINETTE 664D 1ET {DLF,HYF,IEF,MSUDF}

EFBEEF BR VALIDATED B413 {CHB}{DLF,HYF,IEF,MSUDF,MDF,DBF}

BR VALIDATED B413 6035 7098 {DLF,HYF,IEF,MDF,DBF}
 P43857421 BR BENNETT 4R Y428 2101 6035 {HYP,DBP}

CE	11.2	MM	28	FAT	0.061
BW	1.3	M&G	61	REA	0.83
WW	66	MCE	6.9	MARB	0.62
YW	97	MCW	109	BMIS	507
DMI	0.6	UDDR	1.40	BIIS	626
SC	1.2	TEAT	1.50	CHBS	183
SCF	23.4	CW	90		



SEMEN: \$25/Straw; \$50/Certificate
 Contact: Reed Enterprises 417-860-3102

— Sired by a horned Hereford elite from the Rocky Mountains of Montana. His dam is one of the most popular dams out of the plains of Oklahoma. He is on his way to the sandy coast of North Carolina. Churchill Nationwide will add carcass merit and quality and accomplish your goals in any herd — horned and polled alike — coast to coast, nationwide.



BR VALIDATED B413 6035 7098
Dam of Nationwide



JODY STANDLEY
 Owner 919-291-4212
 Farm Address:
 84 Austin Farm Lane • Clayton, NC 27520



RYAN MCGUFFEE
 601-672-0245
 P.O. Box 506
 Mendenhall, MS 39114

7HP133 RV VALOR 9444G ET

AHA 44076080 / Victor x Extra Deep / Homo. Polled / \$30



- ◊ No stranger to the breed, VALOR enters our lineup as a proven Calving Ease cowmaker.
- ◊ VALOR excels for carcass and is a breed-leader for CW, REA, MARB and \$CHB.
- ◊ His daughters are easy fleshing with excellent udder balance and teat length, which is evident by his breed-leading UDDER, TEAT and \$BMI.

From Rausch Herefords and Ravine Creek Ranch, SD

CED	BW	WW	YW	DMI	SC	SCF	MM	M&G	MCE	MCW	UDDR	TEAT	CW	FAT	REA	MARB	BMI\$	BII\$	CHB\$
7.9	-0.4	61	89	.2	1.1	20.9	24	54	-1.5	90	1.70	1.70	103	0.031	0.81	0.27	469	559	176
.58	.84	.77	.75	.20	.64	.37	.33	-	.44	.41	.59	.61	.31	.38	.30	.33	-	-	-
15	5	32	54	32	39	14	75	60	89	51	1	1	1	62	3	15	4	4	1

7HP125 CMF 1720 GOLD RUSH 569G ET

AHA 44108010 / Endure x Resolute / Homo. Polled / \$25



- ◊ GOLD RUSH is a rising star in the Hereford breed. His progeny continue to impress and create repeat customers.
- ◊ This sire adds pigment and performance, two of the most important traits to today's breeders.
- ◊ He is moderate framed, big hipped and long as a train with a big foot and excels for soundness.

From Candy Meadow Farms, TN

CED	BW	WW	YW	DMI	SC	SCF	MM	M&G	MCE	MCW	UDDR	TEAT	CW	FAT	REA	MARB	BMI\$	BII\$	CHB\$
8.8	2.1	69	112	.6	1.3	24.7	29	63	3.9	94	1.30	1.40	92	0.051	0.81	0.63	529	653	194
.46	.83	.73	.70	.20	.53	.39	.28	-	.42	.41	.53	.53	.32	.35	.31	.33	-	-	-
11	35	6	6	86	20	2	41	18	28	61	23	10	3	85	3	1	1	1	1



YOUR SUCCESS *Our Passion.*

Phone: (614) 873-4638 ♦ www.selectsiresbeef.com

©Your Success Our Passion. and the Select Sires logo are registered trademarks of Select Sires Inc., Plain City, Ohio. EPDs as of 2/5/24.



7HP131 TH ADVENTURE 143K

AHA 44334194 / Venture x Sleep On / Homo. Polled / \$25



- ◊ Breeders are requesting Calving Ease heifer bulls with extra muscle and power and ADVENTURE is just that!
- ◊ He excels for maternal traits such as MCE, UDDER and TEAT.
- ◊ He is built right with body cavity yet is up headed and attractive.

From Topp Herefords, ND

CED	BW	WW	YW	DMI	SC	SCF	MM	M&G	MCE	MCW	UDDR	TEAT	CW	FAT	REA	MARB	BMI\$	BI\$	CHB\$
11.2	-.8	54	84	.3	1.2	20.1	32	59	9.8	66	1.40	1.50	75	0.001	0.49	0.20	417	495	134
.31	.50	.44	.44	.14	.42	.28	.23	-	.29	.29	.39	.39	.22	.26	.20	.23	-	-	-
5	4	64	67	48	29	19	22	37	1	10	6	3	31	17	39	27	17	19	20

7HP132 RST 5051 SMALL TOWN KID 9023

AHA 44039432 / SMALL TOWN KID x Revolution / Homo. Polled / \$30



- ◊ KID 9023 is a proven sire that is a breed-leader for CED, WW, YW, SC UDDER, TEAT, CW, REA and MARB.
- ◊ His daughters in production are ideal cows that have beautiful udders.
- ◊ For those looking for a larger framed, foot improver, KID 9023 is your bull.

From Thomas Herefords, MT

CED	BW	WW	YW	DMI	SC	SCF	MM	M&G	MCE	MCW	UDDR	TEAT	CW	FAT	REA	MARB	BMI\$	BI\$	CHB\$
14.3	-.5	77	114	1.2	2.1	21.8	27	66	4.7	99	1.60	1.60	101	0.041	0.92	0.41	468	583	167
.43	.75	.66	.64	.19	.53	.33	.32	-	.36	.31	.49	.50	.10	.10	.10	.10	-	-	-
2	5	1	5	99	1	9	52	11	20	71	1	1	1	74	1	4	4	2	2

7HP134 111F NEXT LEVEL ET

AHA 44439544 / Governor x CUDA / Homo. Polled / \$40



- ◇ Just as his name suggests. He is NEXT LEVEL Hereford genetics!
- ◇ He stands alone as the breed-leader for \$CHB.
- ◇ His full sisters on display in Denver were well received and his young dam has already posted impressive ratios of 95 for BW, 104 for WW and 102 for YW.
- ◇ With nine traits in the Top 1% of the breed, NEXT LEVEL will improve your cow herd.

From 111 Farm, GA

CED	BW	WW	YW	DMI	SC	SCF	MM	M&G	MCE	MCW	UDDR	TEAT	CW	FAT	REA	MARB	BMI\$	BII\$	CHB\$
6.7	1.3	79	130	0.7	1.6	19.1	35	74	5.4	90	1.30	1.30	118	0.061	0.92	0.78	485	624	243
.28	.44	.40	.39	.13	.32	.28	.23	-	.29	.30	.38	.38	.10	.10	.10	.10	-	-	-
22	20	1	1	92	6	27	9	1	14	52	23	29	1	92	1	1	2	1	1

7HP135 111F LIEUTENANT ET

AHA 44439540 / Governor x CUDA / Homo. Polled / \$35



- ◇ Like his full brother NEXT LEVEL, LIEUTENANT is a genomic rockstar!
- ◇ He is a performance bull that is a breed-leader for WW and YW, yet also a rock star for reducing DMI efficiency!
- ◇ With 14 traits in the Top 10% or better, LIEUTENANT will move your herd forward no matter your focus.

From 111 Farm, GA

CED	BW	WW	YW	DMI	SC	SCF	MM	M&G	MCE	MCW	UDDR	TEAT	CW	FAT	REA	MARB	BMI\$	BII\$	CHB\$
8.7	-0.1	71	116	0.7	1.5	28.7	40	75	3.7	65	1.30	1.30	95	0.061	0.62	0.79	591	731	208
.28	.44	.40	.39	.13	.31	.27	.23	-	.29	.30	.37	.38	.10	.10	.10	.10	-	-	-
11	7	4	4	92	9	1	2	1	30	9	23	29	2	92	18	1	1	1	1



YOUR SUCCESS *Our Passion.*

Your Success Our Passion. is a registered trademark of Select Sires Inc. SLEEP ON photo reversed. EPDs as of 01/23/23

Phone: (614) 873-4683 • www.selectsiresbeef.com

®Your Success Our Passion. and the Select Sires logo are registered trademarks of Select Sires Inc., Plain City, Ohio. EPDs as of 2/5/24.

ADVENTURE, KIDD 9023, NEXT LEVEL and LIEUTENANT photos are reversed.



genesource

WWW.THEGENESOURCE.COM



KJ TWJ 907E LIBERTY 159H ET



ECS 628 IVY'S ADVANCE 8923 ET



BK RED RIVER H18 ET



KLD RW MARKSMAN D87 ET



BK JET SMOOTH J18



BACC 747 FUNDAMENTAL 114



genesource

14382 FM 103, NOCONA, TX 76255

DAVE ALLAN 979-561-7115 | TYLER ALLAN 979-743-1512 | BECKY ALLAN 512-750-8367
PAUL MAULSBY 979-587-2835

HEREFORD AI SIRE INDEX

A

AF B G16 Genesis 244 ET	21
ASM 405B Red Man 325L ET	19
AW Statesman 038H	9

B

BAR JZ On Demand	56
Bar Star Fresh Prince 018 ET	25
Birdwell Bullnanza 7098 0552ET	54
Birdwell Dynamic 5022 1673	55
Birdwell Long Run 7098 1665 ET	4
Birdwell New Standard 2912 ET	28
Birdwell Vanguard 5022 9337	55
BK CMCC Kool Profit K001ET	24
BK Jet Smooth J18 ET	38
BR GKB Winchester 1314	43

C

C&L RR KJ 364C Jalapeno 973E	35
Canyon Gem 33Z C211 324G ET	22
Churchill BR 5JNationwide 179J	45
Churchill Doc Holliday ET	30
Churchill Smokey 3128L ET	27
Churchill W4 Sherman 2157K ET	29
CL 1 Domino 0186H	31
CMF 1720 Gold Rush 569G ET	46
CMF OHR 250D Holland 625H	11
CRR 66589 Balance 107	39

E

EF C&L Big Rig 19Z 36E 220J ET	12
EF MF Longest Yard 19Z 228J ET	12
EFBEEF BR Validated B413	54

G

Geonoa 6011 Belle Air 19091	44
-----------------------------------	----

H

H B Distinct	26
--------------------	----

J

JW 1857 Merit 21134	18
---------------------------	----

K

KCF Bennett B716 F597	8
KCF Bennett Bedrock H642	7
KCF Bennett Eagle H550	8
KCF Bennett Monument J338	6
KLD RW Momentum D731 ET	40
KRM 9160 Follow Me 8G L35 ET	41
KSU Land Grant 153 ET	33

M

MPH 2103 Eastwood G3 ET	10
MPH Z311 Rampage D1	10

HEREFORD AI SIRE INDEX

N

NJW 11B 028X Hoss 41E ET	15
NJW 11B 173D Character 178J ET	23
NJW 133A 6589 Manifest 87G ET	14
NJW 139C 103C Ridge 254G	16
NJW 247C 41E Soul 173K	17
NJW 79Z 029H Vista 147L ET	17

O

111F Lieutenant ET	48
111F Next Level ET	48
OHR 543G Gold Power 779K	11

R

RPC JCS 7119 007 Rubble 210	36
RST 5051 Small Town Kid 9023	47
RST Final Print 0016	32
RV Valor 9444G ET	46

S

SHF Harvest D287 H033 ET	5
SHF Haviland F158 H028	3
SHF Headstrong D287 H315 ET	7
SHF Knuckle H324 K252	41
SHF Legion H315 L060	2
SHF Liberty H028 L356 ET	2
Stellpflug Gunsmoke 222 ET	37

T

TCW Reno 81E 201K	38
TH 6153 Imprint 956J ET	11
TH Adventure 143K	47
TH Milford 21J	20
THF Chief 3J	20

W

WMC EF 18051 9G Devotion 5K	13
-----------------------------------	----

HEREFORD ADVERTISERS INDEX

A

Ashewood Farm	9
Atkins Herefords	32
Avenales Cattle Co.	26

B

Bacon Cattle & Sheet	15
Bar Star Cattle	25, 26
Barber Ranch	43
Bayer Herefords	21
Birdwell Ranch	4, 28, 54, 55
Bixler Herefords	31
Brumley Farms	37
Buck Cattle Co.	24, 38

C

C&L Hereford Ranch	3, 12
Canyon Gem Livestock	22
Chapman Land & Cattle	14
Churchill Cattle Co.	27, 28, 29, 30, 31
Colyer Herefords	43
Cooper Hereford Ranch	31
Copeland Herefords & Sons LLC	36
Coyote Ridge Ranch	39

D

Delaney Herefords	33
Durbin Creek Ranch	13
Dvorak Herefords	32, 33

E

Ellis Farms	54
Ernst Herefords	26
Everhart Herefords	12, 13
Express Ranch	43

F

5J Cattle Co.	44, 45
Four B Farm	23
Frank Herefords	5
Friedt Herefords	21

G

Genesource	49
Genex Corp	554, 6
Genoa Livestock	44
GKB Cattle Co.	43

H

Harrell Hereford Ranch	30
Hillsview Farms	21
HME Herefords	39
Huth Polled Herefords	26

J

Jennings Land & Cattle	27
Journagan Ranch/Missouri State Univ.	9, 35

HEREFORD ADVERTISERS INDEX

K

Kansas State University	33
Knoll Crest Farm	6, 7, 8

M

Matheny Herefords	19
McDonald Farm	12, 24, 25
McGuffee Polled Herefords	40, 41, 45
Mettler Cattle	10
MGM Polled Herefords	55
Moore Cattle Co.	24

N

NJW Polled Herefords	14, 15, 16, 17, 23
----------------------------	--------------------

O

O'Hara Family LLC	12
Olson Hereford Ranch	11

P

Perez Cattle Co.	33
-----------------------	----

R

Reed Enterprises	34
Reed Farms	35
Rees Bros. Herefords	30
Reynolds Herefords	35
Running P Cattle Co.	36

S

Sandhill Farms	2, 3, 4, 5
SandRock Hereford Ranch	3
Select Sires	46, 47, 48
Shaw Cattle Co.	22
Sidwell Ranch	5
Slaytons' BearDance	55

T

Tennessee River Music	18, 19
Thomas Herefords	32
Twin Hills Farms	20

W

W4 Ranch	29
Waggoner Cattle Co.	18
WMC Cattle Co.	13

EFBEEF BR VALIDATED B413 {CHB}{DLF,HYF,IEF,MSUDF,MDF,DBF}



P43558667

Calved: 2/21/2014 - Tattoo: LE B413/RE PEF

CE	2.0/62%	MM	36/6%	FAT	0.032/63%
BW	1.6/25%	M&G	69/6%	REA	0.99/1%
WW	65/17%	MCE	5.7/12%	MARB	1.20/0%
YW	97/31%	MCW	64/9%	BMIS	540/1%
DMI	0.4/71%	UDDR	1.40/6%	BIIS	694/1%
SC	1.1/39%	TEAT	1.30/31%	CHBS	219/1%
SCF	24.4/3%	CW	68/62%		



**SEMEN: \$60/Straw, 10 straw minimum;
\$40/Certificate**
Contact Birdwell Ranch for semen

EFBEEF FOREMOST U208 {SOD}{CHB}{DLF,HYF,IEF,MSUDF}
EFBEEF TFL U208 TESTED X651 ET {SOD}{CHB}{DLF,HYF,IEF,MSUDF}
 P43091736 EFBEEF P606 MABEL R415

MSU TCF REVOLUTION 4R {SOD}{DLF,HYF,IEF,MDF,DBC}
EFBEEF 4R THYRA Y865 {DLF,HYF,IEF,DBP}
 P43187517 EFBEEF N014 THYRA S645 {DOD}{DLF,HYF,IEF}

HOMOZYGOUS POLLED!

- Pigmented and traditionally marked progeny with in demand color.
- Validated is iconic for angular, feminine, pretty uddered, problem free, productive daughters. The hallmark of a long term in-demand sire.
- He gives up nothing in any measured trait and blows the doors off on the traits of extra commercial value.
- Validated continues to reinforce his results driven breed superiority with leading results as a reference sire in on-going AHA sire tests. Recent test data from the Merston test revealed Validated providing more than 1" additional rib-eye than the next best sire.
- Validated is the most unique sire in the AHA database for the ability to improve yield grade on the rail and still make easier fleshing daughters.
- Owned with Ellis Farms and Genex.



Fletcher, OK
 Jim Birdwell 580-695-2352
 Joel Birdwell 405-368-1058



GENEX

BIRDWELL BULLNANZA 7098 0552ET {DLF,HYF,IEF,MSUDF,MDF}



P44254853

Calved: 10/16/2020 - Tattoo: BE 0552

CE	7.0/20%	MM	33/16%	FAT	0.092/100%
BW	0.8/14%	M&G	70/4%	REA	1.01/1%
WW	74/2%	MCE	11.9/1%	MARB	0.84/1%
YW	110/8%	MCW	104/80%	BMIS	603/1%
DMI	0.7/90%	UDDR	1.50/1%	BIIS	748/1%
SC	0.5/92%	TEAT	1.50/3%	CHBS	222/1%
SCF	27.9/1%	CW	106/1%		



**SEMEN: \$50/Straw, 10 straw minimum;
\$75/Certificate**
Contact Birdwell Ranch for semen

SHF YORK 19H Y02 {SOD}{CHB}{DLF,HYF,IEF}
CHURCHILL BROADWAY 858F {CHB}{DLF,HYF,IEF,MSUDF,MDF,DBF}
 P43919937 CHURCHILL LADY 640D {DLF,HYF,IEF}

EFBEEF BR VALIDATED B413 {CHB}{DLF,HYF,IEF,MSUDF,MDF,DBF}
BR VALIDATED B413 6035 7098 {DLF,HYF,IEF,MDF,DBF}
 P43857421 BR BENNETT 4R Y428 2101 6035 {HYP,DBP}

HOMOZYGOUS POLLED!

- Dam is the "super cow", 7098.
- A genomic rockstar!
- No other bull can match his combination of YW, REA, and MARB, while having the highest BMIS/CHBS combination in the AHA database.
- Bullnanza is a multipurpose sire that will advance you in the right direction for a wide variety of traits.
- According to his genetic predictions he has the most profit potential we've seen!



BR BULLNANZA 3029
 Sired by Bullnanza — High seller at the 2023 Big League Genetics Sale
 Owned by Boyd Meyer



Fletcher, OK
 Jim Birdwell 580-695-2352
 Joel Birdwell 405-368-1058

BIRDWELL DYNAMIC 5022 1673 ET {DLF,HYF,IEF,MSUDF,MDF}



P44297680

Calved: 3/5/2021 - Tattoo: BE 1673

CE	7.0/20%	MM	34/11%	FAT	0.072/96%
BW	1.0/16%	M&G	67/8%	REA	0.87/2%
WW	65/15%	MCE	5.4/14%	MARB	0.23/21%
YW	110/9%	MCW	97/67%	BMI\$	477/3%
DMI	0.1/31%	UDDR	1.60/1%	BIIS	569/4%
SC	2.0/1%	TEAT	1.60/1%	CHBS	162/3%
SCF	21.9/9%	CW	90/4%		



SEMEN: \$50/Straw, 10 unit minimum; \$75/Certificate
Contact Birdwell Ranch for semen

SHF YORK 19H Y02 {SOD}{CHB}{DLF,HYF,IEF}
SHF DAYBREAK Y02 D287 ET {CHB}{DLF,HYF,IEF,MSUDF}
P43676330 SHF MISS M326 T08 ET {DLF,HYF,IEF}

CHURCHILL SENSATION 028X {SOD}{DLF,HYF,IEF,MDF,DBF}
BR SENSATION 028X 3335 5022 {DLF,HYF,IEF,MSUDF}
P43632454 BR TRUST 100W 6171 3335 {HYP}

HOMOZYGOUS POLLED!
— Out of the incredible 5022 donor, who is also the dam of Vanguard. She is one of the top BMI\$ cows in the breed. Arguably the best 028X daughter anywhere.
— "Dynamic" phenotype, short marked and fully pigmented.
— Owned by Birdwell Ranch.



BR SENSATION 028X 3335 5022

— Dam of Dynamic and Vanguard



Fletcher, OK
Jim Birdwell 580-695-2352
Joel Birdwell 405-368-1058

BIRDWELL VANGUARD 5022 9337 {CHB}{DLF,HYF,IEF,MSUDF,MDF}



P44021997

Calved: 3/12/2019 - Tattoo: BE 9337

CE	5.0/34%	MM	38/4%	FAT	0.042/75%
BW	0.2/9%	M&G	68/7%	REA	0.97/1%
WW	61/32%	MCE	7.3/5%	MARB	0.58/1%
YW	95/36%	MCW	71/14%	BMI\$	495/2%
DMI	0.4/66%	UDDR	1.40/6%	BIIS	605/2%
SC	1.3/20%	TEAT	1.50/3%	CHBS	163/3%
SCF	23.6/4%	CW	71/48%		



MCW 71/14%



SEMEN: 10 Straws for \$500; \$100/Certificates as needed
Contact Birdwell Ranch

EFBEEF TFL U208 TESTED X651 ET {SOD}{CHB}{DLF,HYF,IEF,MSUDF}
EFBEEF BR VALIDATED B413 {CHB}{DLF,HYF,IEF,MSUDF,MDF,DBF}
P43558667 EFBEEF 4R THYRA Y865 {DLF,HYF,IEF,DBF}

CHURCHILL SENSATION 028X {SOD}{DLF,HYF,IEF,MDF,DBF}
BR SENSATION 028X 3335 5022 {DLF,HYF,IEF,MSUDF}
P43632454 BR TRUST 100W 6171 3335 {HYP}

HOMOZYGOUS POLLED!!
— Phenomenal EPDs with 13 traits in the top 10%.
— Performance to back up EPDs.
— BW 84 lb., WW ratio 110, YW ratio 107 in the Birdwell herd.
— REA ultrasound ratio 111.
— IMF ratio 105.
— All indexes in the top 1% of the breed.
— Enrolled in the AHA Young Sire Test program with data to be available soon.



Hartford, WI
Steve cell 414-881-5274



Fletcher, OK
Jim cell 580-695-2352
Joel cell 405-368-1058



Bedford, PA
Paul cell 717-805-1376

Demand Excellence

with this Game-Changing Bull



1HP00861 BAR JZ **ON DEMAND**

Reg#: 44355795 // RV Valor 9444G ET x NJW 735 W18 Homegrown 8Y ET
Homozygous Polled // Owned with Hoffman Ranch

CED	BW	WW	YW	DMI	SC	SCF	MILK	M&G	CEM	MCLW	UDDR	TEAT	CW	FAT	REA	MARB	\$BMI	\$BII	\$CHB	
12.0	0.3	64	101	0.4	1.5	19.8	31	63	2.6	94	1.5	1.5	92	0.022	0.57	0.23	433	523	157	
.33	.50	.45	.46	.15	.43	.30	.25	.32	.33	.41	.41	.22	.27	.23	.24	24%	21%	11%	10%	5%

- › On Demand was the highlight of the 2023 spring sale season, creating as much excitement as any Hereford bull in the breed to sell.
- › He is a big-time herd bull with outstanding phenotype, unmatched index power and an elite set of curve-bending EPDs.
- › On Demand is a bull that embraces the future of the beef industry without sacrificing those real-world traits the Hereford breed is famous for. He has all the makings of a breed changer!

Take your operation to the next level with On Demand.



Scan to shop online or contact your local GENEX representative to place an order.



888.333.1783 // catalog.genex.coop

GENEX[™]
FOR GENERATIONS