



HAUGHT
Brothers

A Lasting Legacy

Performance Tested Bull & Commercial Female Sale
MONDAY . FEBRUARY 21 . 2022 . 12 NOON (EST)

4975 BUNNELLS RUN RD . HARRISVILLE . WV



& MRS. MARION GOFF
& Eric



& Sons Show Champion Female at the
1962 West Virginia State Fall Show & Sale.



This bull G Choice Domestic W was the top
West Virginia Hereford Breeder's



The Goff Bros

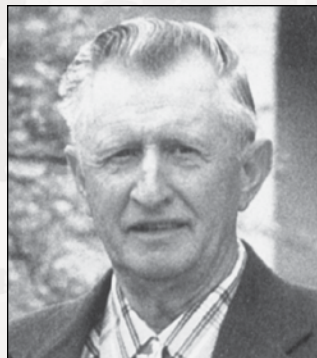




Alfieri Goff
(1870-1945)



Denver Goff
(1909-1995)



Marion Goff
(1937-2004)



Lenna Goff Haught
(1933-2021)

The Legacy

Many greats before us have left behind a strong legacy, but what is meant by this term? A legacy represents the body of work at each stage of your life as you establish foundational building blocks and accumulate wisdom. This gained wisdom contributes to growth, innovation, and opportunity.

In 1893, Alfieri Goff began his legacy by accepting a farm of 101 acres in Washburn, WV from his father. In that same year, he purchased a purebred Hereford bull to use on commercial cows. In 1899, he purchased his first registered Hereford Heifer, and by 1909, A. Goff had 10 registered Hereford cows. In 1910, he bought his first herd bull, Felix, who was the first Polled Hereford bull to be brought into West Virginia.

Following the close of World War I when his two eldest sons, Claude and Don, began to take an active interest in Polled Hereford cattle, A. Goff started doing business under the present firm name A. Goff & Sons. A. Goff's youngest son, Denver, sparked an interest in Polled Herefords as well, and some years later he became farm manager. A. Goff & Sons held their first production sale in conjunction with Hugh M. Lynch Farm in 1951 in Chillicothe, Ohio. After three successful sales, A. Goff & Sons dissolved the partnership and debuted West Virginia's first Polled Hereford production sale in 1956 on the farm in Washburn, WV.

Following his return from the Air Force in 1958, Denver's son Marion, the third generation of A. Goff & Sons, purchased his uncle Claude's farm and assumed a crucial role in the operation. The farm continued to grow, and successful sales continued each year with recognition being gained on the national level. In 1979, A. Goff was posthumously inducted into the American Polled Hereford Association Hall of Fame. In 1989, Denver Goff was inducted into the WV Agricultural Hall of Fame. Marion Goff served on the Board of Directors of the American Polled Hereford Association from 1991 to 1995. Denver's grandson, Ira Haught, was also instilled with a love for Polled Hereford cattle and began his firm, Haught Brothers, in 1969. In 2019, Haught Brothers was recognized as a Golden Breeder by the American Hereford Association.

Ira is now assisted by his son, Derek, who also operates his own herd as Five Star Polled Herefords. A. Goff & Sons continues to operate today, after 129 years, with Marion's son, Eric Goff as farm manager. Ira, Eric, and Derek share a strong desire to continue the successful production of top-quality Polled Hereford cattle while working together to maintain and expand their herds based on easy-keeping, easy-calving, and long-lasting females.

Join us as we forge ahead into the future while honoring our past ...

It is an honor and a privilege to invite you to our first annual "A Lasting Legacy" Performance Tested Bull and Commercial Female Sale. We have been marketing bulls via private treaty for over 50 years, and with our rapid growth over the last decade the decision was made to develop this sale. This will be an annual event going forward with the intention of increasing the offering of bulls over the next few years. The commercial female portion of the sale will be used as an avenue for our bull customers to market groups of commercial females that meet our quality and health criteria. Be sure to study the information pages within the catalog to learn more about the many programs that are available to commercial producers to assist in adding to your bottom line. Our number one priority as a seedstock producer is to develop relationships with you, our customers, in order to better assist you in running a more profitable and sustainable operation. As you study this catalog, we hope that you will appreciate it's historical significance. The history of the females behind the bulls being offered should provide a level of assurance that you are not only purchasing a bull, but you are buying into a program that has been built around those certain traits that keep an operation in business for multiple generations. We've been creating quality cattle at an affordable price for generations. We stand on those same principles today and look to the future with the same promise that was envisioned by Alfieri Goff over 125 years ago.

Sincerely,

Derek M. Haught

Home: 304-477-3818 • Cell: 304-299-9170

"If I have seen further than others, it is by standing upon the shoulders of giants." Isaac Newton

DEREK M. HAUGHT
248 RIVER BEND LN.
SMITHVILLE, WV 26718
304-299-9170



IRA M. HAUGHT
864 SMITHVILLE RD.
HARRISVILLE, WV 26362
304-299-0550



A Lasting Legacy



Performance Tested Bull & Commercial Female Sale MONDAY . FEBRUARY 21 . 2022 . 12 NOON (EST) 4975 BUNNELLS RUN RD . HARRISVILLE . WV

In the event the sale should be postponed due to inclement weather, the sale will be held on Monday February 28, 2022 at Noon EST.

SALE DAY PHONE

Derek, cell 304-299-9170 • Dale, cell 918-760-1550

SCHEDULE

Sunday, Feb. 20

12 to 5 p.m. Sale Cattle on Display

5 p.m. Dinner and Social Hour

Monday, Feb. 21

9 a.m. Sale Cattle on Display

11 a.m. Lunch

12 Noon Sale

ACCOMMODATIONS

SLEEP INN

29 Main St., Ellenboro, WV 26346

Phone 304-699-2919

Conveniently located just off of US route 50 at Ellenboro. They have ample trailer parking and are just a short 5-minute drive from the sale. There are also numerous motels in Parkersburg and Clarksburg.

SALE STAFF

Dale Stith, Auctioneer 918-760-1550

John Spiker 304-677-0255

Noah Benedict, HW/AHA 217-372-8009

ACKNOWLEDGMENTS

Jack Ward Executive Vice President, AHA

Ken Scott President, W.Va. Hereford Association

Ira Haught President, Ritchie Co. Polled Hereford Assn.

Shaun Meckley, DVM Herd Veterinarian

Justine Saville, DVM Herd Veterinarian

Rob Stout, DVM Embryologist

BK Cattle Enterprises Photography

AHA Creative Services Catalog

We are committed to supplying quality Hereford and Angus bulls at an affordable cost with a level of customer service that you won't find anywhere else.

TERMS

Payment: Terms of the sale are cash or check at the conclusion of the sale.

Ownership: Cattle are the property of purchaser as soon as sold, but will be cared for free of charge for a reasonable length of time.

Disputed bids: The auctioneer will settle any dispute as to bids by declaring all bids off and reselling the animal in question.

Health: All cattle selling will have interstate health charts required for shipping into other sections of the United States.

Bull Guarantee: Every bull that sells will be guaranteed in an unconditional manner against injury and death for two full breeding seasons. Any bull that is injured in a manner that would prevent him from being capable of breeding cows, providing they have been cared for in a reasonable manner, will be replaced. Buyer agrees to have bulls examined by a licensed veterinarian and notify Seller immediately. A replacement bull will be provided or a sale credit given toward one bull in the following year's sale, less any salvage value received by the buyer.

Delivery: All bulls selling for \$3000 or more will be delivered free of charge anywhere in the continental US. Bulls selling for less than \$3000 and commercial females can be delivered at cost. We do not utilize commercial trucking and all cattle will be delivered personally. All cattle picked up within 5 days of the sale will receive a \$50 credit per lot.

Volume Discounts: Buyers purchasing 2 or more bulls will receive a volume discount as follows: 2-4 bulls = 3% and 5 bulls or more = 5% per bull. Discounts do not apply to females or any bulls purchased outside of this sale.

Wintering: All bulls selling for \$3000 or more will be wintered free of charge until the end of April. Bulls selling for less than \$3000 can also be wintered but will incur a \$3/day housing charge. All bulls wintered will be wormed and vaccinated in mid April and deliveries will take place the last week of April and first week of May. Commercial females can also be wintered at a rate of \$150/hd through Mid May. They will be wormed and vaccinated in early May and ready to turn out. A \$100 calving fee will be added to any commercial females that are due to calve between sale day and mid May.

Commercial Females: The entire offering of commercial females is directly out of our recipient herd. They have been managed right along with our purebred herd and will sell with the same guarantees as if they were in our fall female sale. We made the decision to offer all of our commercial females that weren't going to deliver an ET calf for us in 2022. We sorted off a few for temperament, udder quality and age. This will be a very strong offering of young to middle aged BWF and Hereford females ready to go to work at a time when the feeder calf market is getting good. Buy with confidence knowing that we stand behind these females 110%.

Tennessee Agricultural Enhancement Program

TN

The Tennessee Agricultural Enhancement Program (TAEP) provides cost share dollars to agricultural producers for the purpose of making long-term investments in Tennessee farms and communities. For calendar year 2022, TN farmers who applied for the TAEP program are eligible for a cost-share reimbursement on bulls with eligible Genomic Enhanced EPDs that meet certain criteria. Bulls that qualify for this program are identified in the catalog with an outline of the state of TN. More information can be found at https://www.tn.gov/content/dam/tn/agriculture/documents/taep/taep_beef_requirements.pdf.

County Agricultural Investment Program

KY

The County Agricultural Investment Program (CAIP) provides Kentucky agricultural producers cost-share assistance on practices that increase net farm income and opportunities to try new/innovative technologies or systems that improve farm efficiency and productivity. For calendar year 2022, KY farmers who applied for the CAIP program are eligible for a cost-share reimbursement on bulls with eligible Genomic Enhanced EPDs that meet certain criteria. Bulls that qualify for this program are identified in the catalog with an outline of the state of KY. More information can be found at https://laurel.ca.uky.edu/files/caip-21_animal-large.pdf.

Maternal Advantage



The Maternal Advantage program generates females with added longevity, more docility, increased fertility, and more profit per year. Participating bull batteries must rank in the top 50% of the breed for Baldy Maternal Index (BMI\$) if used on British-based cows or the top 50% of the breed for Brahman Influenced Index (BII\$) if used on Brahman-based cows. Bulls that qualify to be used in this program are identified in the catalog with the Maternal Advantage logo seen above. More information can be found at https://hereford.org/wp-content/uploads/2018/06/MA_fullpage_baldy.pdf.

Hereford Advantage



Hereford Advantage is an industry-changing program from the American Hereford Association and IMI Global to verify and add value to Hereford-influenced feeder cattle with superior genetics, health, and management. Benefits of this program include added market exposure and access to genetic improvement tools. Genetic requirements for this program include a minimum of 50% Hereford genetics and a bull battery ranking in the top 50% of the breed for \$CHB index. Bulls that qualify to be used in this program are identified in the catalog with the Hereford Advantage logo seen above. More information can be found at https://hereford.org/wp-content/uploads/2020/04/Hereford_Advantage_Flyer-4.1.20.pdf.

Herd Health

We take every precaution to maintain a disease and defect free herd of cattle. We are very proud of the fact that we have managed to maintain a large herd of cattle that remain free of Anaplasmosis, Bovine Leukosis and Johnes. These three diseases are currently running rampant in many herds throughout the country. We test all cattle brought into our herd and encourage you to do the same. Any cattle purchased in this sale that are tested within 60 days of the sale and found to be carrying any of the three diseases mentioned above should be culled immediately and we will refund the purchase price plus any expenses incurred. Notification shall be made immediately so that we can take the necessary steps to isolate any additional issues. We also collaborate with the AHA and AAA to ensure that our cattle remain free of known genetic defects. At this time we don't have a single animal within our registered herd that is a carrier of a known genetic defect. It is unsettling to see the number of carrier cattle that have been marketed in recent years by some of the most prominent herds in the country. We take our role as a seedstock producer very seriously and you can rest assured that we will continue to be a source for purebred cattle that are free of disease and defect. Please feel free to reach out if you have any questions in regard to our herd health protocols. Our extensive vaccination program is available by request.

Using QR Codes

QR codes are activated as of January 3, 2022.
You will be able to click on the QR code to view videos of sale lots.

1. Open the camera on your smartphone.

2. Hover over the QR Code on the lots in the catalog.

3. Tap the link that appears at the top of the screen.

4. The video of that lot will now play.

LiveAuctions TV

Technical Support:
(682) 816-4900
TechSupport@LiveAuctions.tv

Online Bidding Platform

Live audio and live video will allow buyers to bid on animals as if they were present at the sale.

Buyers must create an account prior to the sale.

Please visit <http://LiveAuctions.tv> to create an account.



The Power of Genomically Enhanced EPDs

The American Hereford Association (AHA) has embraced the use of genomics into their genetic evaluation by launching a first of its kind single step analysis that utilizes the marker effects of specific traits. Likewise, AHA is directly estimating accuracy values rather than approximating. The direct estimation of accuracy results in a more conservative value but a more accurate value than previous methodologies. The AHA is producing the most reliable genetic evaluation that is supported by Whole Herd TPR™ and genomics, which will give prospective buyers added confidence in purchasing young and unproven animals.

Buying animals that have a genomic profile incorporated into their Expected Progeny Difference (EPD) offers many advantages that allow for quicker breed and herd improvement. Below is a table showing the average increase in accuracy when buying a young animal with a Genomic Enhanced EPD (GE-EPD) versus an animal without a GE-EPD. Similarly, an effective progeny number increase is listed by trait that shows how many progeny equate to a genomic enhancement of a young animal (e.g. yearling). That's right, buying a young animal that has been genotyped is like having 2-17 progeny, depending on the trait. The proof gained on young, non-parent animals, through a genomic enhancement is valuable and greatly mitigates the risk and allows for more directed selection.



Each animal tested is recognized with the AHA GE-EPD logo.

AHA Trait	Accuracy Improvement	Effective Progeny Number Increase*
Calving Ease	0.09	17
Birth Weight	0.12	8
Weaning Weight	0.14	12
Yearling Weight	0.16	9
Scrotal Circumference	0.17	6
Mature Cow Weight	0.12	4
Udder Suspension	0.17	7
Teat Size	0.17	7
Carcass Weight	0.11	3
Fat	0.08	2
Rib-Eye Area	0.07	2
Marbling	0.10	3

* Effective Progeny Number Increase (EPNI)- EPNI is the difference gained for genotyped animals versus non-genotyped animals.





Hereford Bulls



Lot 1 - H 248G JACKPOT 123

1 H 248G JACKPOT 123 {DLF,HYF,IEF,MSUDF}

BULL | P44226925 | Calved: 3/14/21 | Tattoo: RE H123 | Homozygous Polled

TH 13Y 358C BOTTOM LINE 206E {CHB}{DLF,HYF,IEF,MSUDF,MDF}

TH 76A 206E GROWTH FUND 248G {DLF,HYF,IEF,MSUDF}

P43996711 TH 416Y 9050 LORETTA 76A {DLF,HYF,IEF}

TH 108U 14Z PLAYMAKER 78D {DLF,HYF,IEF,MSUDF}

H 78D DAPHNE 842 {DLF,HYF,IEF,MSUDF}

P43948217 H 9001W DAPHNE 643 {DLF,HYF,IEF}



CE		BW		WW		YW		Milk	
-4.5	95%	4.6	85%	61	23%	101	16%	23	73%
SC		Marb		RE		BMIS		CHBS	
0.8	66%	0.06	61%	0.55	19%	284	91%	108	60%

BW	78
205 Wt	809
365 Wt	1262
FS	6
SC	36
Dam Prod	1@116

Eye Pigment	
Left	Right
100	100



- We couldn't think of a better way to start our first annual bull sale. This is the first 248G that we have offered and there will be many more great ones to follow. He's only here now because Dad had enough foresight to purchase an interest in last year's Lot 1 heifer back from Parsons Cattle Company.
- Top 25% for WW, YW, RE

2 H 15E JUSTICE 121 {DLF,HYF,IEF,MSUDF}

BULL | P44245484 | Calved: 3/10/21 | Tattoo: RE H121 | Homozygous Polled

JDH VICTOR 719T 33Z ET {CHB}{DLF,HYF,IEF,MSUDF}

AH JDH MUNSON 15E ET {CHB}{DLF,HYF,IEF,MSUDF,MDF}

P43803648 AH JDH MS 25L WRANGLER 34X ET {DOD}{DLF,HYF,IEF}

BW ADVENTURE 36C {DLF,HYF,IEF,MSUDF}

BW VICTORIA 36C 27F {DLF,HYF,IEF,MSUDF}

P43989672 THM 6056 VICKY BELLE 2062 {HYP}



CE		BW		WW		YW		Milk	
-0.5	77%	2.9	50%	51	68%	79	75%	20	84%
SC		Marb		RE		BMIS		CHBS	
0.4	95%	0.10	46%	0.46	37%	315	77%	108	62%

BW	84
205 Wt	741
365 Wt	1247
FS	5.9
SC	34
Dam Prod	1@106

Eye Pigment	
Left	Right
10	0



- If you're looking for a herd bull that would be fun to drag around the show circuit before he hits the pasture this is likely the one.
- Top 50% for BW, Marb, RE



Lot 2 - H 15E JUSTICE 121



Hereford Bulls



3 5STAR 5714 JFK 117

BULL | P44242686 | Calved: 3/30/21 | Tattoo: RE 5117 | Homozygous Polled

CHURCHILL KICKSTART 501C ET



5STAR 501C ESPRESSO 714



P43836953 5STAR 9001W CHEYENNE 513

PWF RHF 25L WRANGLER 9001W



5STAR 9001W CAROLINE 505

P43561971 SSF 503 LADY MASTERPIECE 137

TN KY

BW	84
205 Wt	713
365 Wt	1115
FS	6.2
SC	33
Dam Prod	2@109

CE		BW		WW		YW		Milk	
-1.2	82%	2.4	38%	57	40%	91	41%	34	9%
SC		Marb		RE		BMIS		CHBS	
1.0	43%	0.02	76%	0.53	22%	381	32%	115	43%

Eye Pigment	Left	Right
	100	100



- You won't find a bull in the offering with more cow power in his pedigree than this guy. 5117 will be the type to sire market topping replacement heifers.
- Top 10% for Milk
- Top 40% for BW, WW, RE and BMIS



Lot 3 - 5STAR 5714 JFK 117

4 5STAR 5715 JACKSON 115

BULL | P44226923 | Calved: 3/14/21 | Tattoo: RE 5115 | Homozygous Polled

CHURCHILL KICKSTART 501C ET



5STAR 501C DOUBLE SHOT 715

P43836954 5STAR X51 VICKY BOOM 412

TLR LARAS LINE 122L 804U



G MISS LORA'S LINE 407

P43532896 H MISS MAG 412

TN KY

BW	92
205 Wt	757
365 Wt	1273
FS	7
SC	36
Dam Prod	6@102

CE		BW		WW		YW		Milk	
-1.1	81%	5.4	93%	63	17%	99	20%	24	61%
SC		Marb		RE		BMIS		CHBS	
0.7	77%	0.03	73%	0.58	15%	331	67%	128	19%

Eye Pigment	Left	Right
	100	100



- Old school Goff genetics on the bottom side make this bull a breeding tool for someone looking to build a herd of females that will last a couple decades.
- Top 20% for WW, YW, RE and CHBS



CHURCHILL KICKSTART 501C ET
- Paternal grandsire of Lots 3, 4, 5; Sire of Lots 6-10

5 H 5714 JEFFERSON 105

BULL | P44226893 | Calved: 2/23/21 | Tattoo: RE H105 | Homozygous Polled

CHURCHILL KICKSTART 501C ET



5STAR 501C ESPRESSO 714

P43836953 5STAR 9001W CHEYENNE 513

LJR MSU 95N MAXIUM 92X



H MISS MAXIUM Y24

P43254367 H MISS HEADLINER 908

TN KY

BW	80
205 Wt	778
365 Wt	1231
FS	6.2
SC	33
Dam Prod	8@105

CE		BW		WW		YW		Milk	
0.1	73%	2.3	36%	63	17%	92	36%	34	9%
SC		Marb		RE		BMIS		CHBS	
0.9	55%	-0.04	92%	0.62	11%	400	22%	111	54%

Eye Pigment	Left	Right
	100	100



- This powerhouse is out of a DOD that is still going strong at 11 years of age. We are very proud of our cowherd that has withstood the test of time because of cows like her. Purebred and commercial breeders alike can benefit greatly by tying into our program.
- Top 20% for WW, Milk and RE



Lot 5 - H 5714 JEFFERSON 105

Hereford Breed Average EPDs									
CE	BW	WW	YW	Milk	SC	Marb	RE	BMI\$	CHBS
2.6	2.8	53	86	25	1.0	0.11	0.39	352	113



Hereford Bulls



5STAR 501C GROWTH FUND 926 ET - Top selling bull in 2020 Fall Sale
Flushmate to Lot 6



Lot 7 - 5STAR 501C HICKORY 034 ET



Lot 8 - 5STAR 501C HICKTOWN 046 ET



Lot 9 - 5STAR 501C HICKTOWN 048 ET

6

5STAR 501C HICKORY 030 ET {DLF,HYF,IEF,MSUDF}

BULL | P44177434 | Calved: 8/21/20 | **Tattoo:** RE 5030 | Horned



CHURCHILL RED BULL 200Z {SOD}{DLF,HYF,IEF,MSUDF,MDF}

CHURCHILL KICKSTART 501C ET {DLF,HYF,IEF,MSUDF,MDF}

P43603037 HVH OKSANA 4L 33N {DLF,HYF,IEF}

MSU TCF REVOLUTION 4R {SOD}{DLF,HYF,IEF}



5STAR LADY STIRLING Y02 {DLF,HYF,IEF,MSUDF}

P43214612 JDB N037 MISS ADVANCE T049 {DLF,HYF,IEF,MSUDF}

CE		BW		WW		YW		Milk	
0.6	68%	1.6	22%	60	25%	102	15%	21	81%
SC		Marb		RE		BMS		CHBS	
1.3	15%	-0.07	96%	0.35	64%	426	11%	95	89%



- The Kickstart x Y02 flush was a great one and these brothers offer an excellent combination of calving ease and performance.
- Top 15% for YW, SC and BMI\$
- Top 25% for BW and WW

TN	KY
BW	74
205 Wt	602
365 Wt	925
FS	5
SC	40
Dam Prod	9@106
Eye Pigment	
Left	Right
100	20

7

5STAR 501C HICKORY 034 ET {DLF,HYF,IEF,MSUDF}

BULL | P44177437 | Calved: 8/24/20 | **Tattoo:** RE 5034 | Horned



CHURCHILL RED BULL 200Z {SOD}{DLF,HYF,IEF,MSUDF,MDF}

CHURCHILL KICKSTART 501C ET {DLF,HYF,IEF,MSUDF,MDF}

P43603037 HVH OKSANA 4L 33N {DLF,HYF,IEF}

MSU TCF REVOLUTION 4R {SOD}{DLF,HYF,IEF}



5STAR LADY STIRLING Y02 {DLF,HYF,IEF,MSUDF}

P43214612 JDB N037 MISS ADVANCE T049 {DLF,HYF,IEF,MSUDF}

CE		BW		WW		YW		Milk	
-2.9	90%	2.8	48%	63	15%	110	6%	21	81%
SC		Marb		RE		BMS		CHBS	
1.0	43%	-0.14	100%	0.56	18%	389	27%	90	95%



- Take both of these guys home and turn them out with a group of commercial heifers. They will let you rest easy and then turn a profit with a powerful calf crop.
- Top 20% for WW, YW and RE

TN	KY
BW	80
205 Wt	766
365 Wt	1002
FS	5.5
SC	37
Dam Prod	9@106
Eye Pigment	
Left	Right
0	0

8

5STAR 501C HICKTOWN 046 ET {DLF,HYF,IEF,MSUDF}

BULL | P44193226 | Calved: 10/10/20 | **Tattoo:** RE 5046 | Scurred



CHURCHILL RED BULL 200Z {SOD}{DLF,HYF,IEF,MSUDF,MDF}

CHURCHILL KICKSTART 501C ET {DLF,HYF,IEF,MSUDF,MDF}

P43603037 HVH OKSANA 4L 33N {DLF,HYF,IEF}

GOLDEN OAK OUTCROSS 18U {SOD}{DLF,HYF,IEF,MSUDF}



5STAR 18U LADY STIRLING 720

43836956 5STAR LADY STIRLING Y02 {DLF,HYF,IEF,MSUDF}

CE		BW		WW		YW		Milk	
-0.6	78%	3.3	60%	58	33%	98	22%	20	86%
SC		Marb		RE		BMI\$		CHBS	
1.5	6%	0.00	82%	0.43	44%	418	14%	99	83%



- This pair of later born flush brothers took a while to get going but they could very well have more potential than any other bull in the offering. Flushmate sisters sold as Lots 1A and 1B in the fall sale.
- Top 15% for SC and BMI\$

TN	KY
BW	65
205 Wt	599
365 Wt	925
FS	4.6
SC	37
Dam Prod	2@97
Eye Pigment	
Left	Right
100	100

9

5STAR 501C HICKTOWN 048 ET {DLF,HYF,IEF,MSUDF}

BULL | P44193230 | Calved: 10/11/20 | **Tattoo:** RE 5048 | Horned



CHURCHILL RED BULL 200Z {SOD}{DLF,HYF,IEF,MSUDF,MDF}

CHURCHILL KICKSTART 501C ET {DLF,HYF,IEF,MSUDF,MDF}

P43603037 HVH OKSANA 4L 33N {DLF,HYF,IEF}

GOLDEN OAK OUTCROSS 18U {SOD}{DLF,HYF,IEF,MSUDF}



5STAR 18U LADY STIRLING 720

43836956 5STAR LADY STIRLING Y02 {DLF,HYF,IEF,MSUDF}

CE		BW		WW		YW		Milk	
-1.3	82%	3.5	65%	62	20%	107	8%	27	43%
SC		Marb		RE		BMI\$		CHBS	
1.5	6%	-0.01	85%	0.36	61%	391	26%	99	83%



- There is herd bull potential in either one of these guys. They will sire calves that pound the scales and also leave a set of replacements that will be second to none.
- Top 10% for YW and SC
- Top 20% for WW

TN	KY
BW	75
205 Wt	573
365 Wt	923
FS	5.1
SC	38
Dam Prod	2@97
Eye Pigment	
Left	Right
10	10



Hereford Bulls



10 H 501C HEADSTART 041 ET {DLF,HYF,IEF,MSUDF}

BULL | P44180565 | Calved: 8/19/20 | Tattoo: RE H041 | Scurred



CHURCHILL RED BULL 200Z {SOD}{DLF,HYF,IEF,MSUDF,MDF}



CHURCHILL KICKSTART 501C ET {DLF,HYF,IEF,MSUDF,MDF}

P43603037 HVH OKSANA 4L 33N {DLF,HYF,IEF}

G HEADLINER 263 {HYP}



H MISS HEADLINER 860 {DLF,HYF,IEF}

P42962621 H MISS MAGNITUDE 112 {HYP}

CE	BW	WW	YW	Milk	
6.3	20%	1.0	14%	54	55%
85	59%	24	67%		
SC	Marb	RE	BMI\$	CHBS	
0.8	66%	0.07	57%	0.17	91%
395	24%	123	27%		

TN	KY
BW	84
205 Wt	677
365 Wt	945
FS	4.7
SC	37.5
Dam Prod	9@95
Eye Pigment	
Left	Right
100	100



- Any chance you get to add direct progeny of 860 (Nawanda Sue) to your operation you should take advantage.
- Top 20% for BW and CE
- Top 30% for BMI\$ and CHBS



Lot 10 - H 501C HEADSTART 041 ET

11 5STAR 18U HAGGARD 036 ET {DLF,HYF,IEF,MSUDF}

BULL | P44180573 | Calved: 8/25/20 | Tattoo: RE 5036 | Scurred



GOLDEN-OAK FUSION 3S {DLF,HYF,IEF,MSUDC}

GOLDEN OAK OUTCROSS 18U {SOD}{DLF,HYF,IEF,MSUDF}

P42963135 GOLDEN-OAK 60D MALLORY 15M {HYP}

PWF RHF 25L WRANGLER 9001W {SOD}{DLF,HYF,IEF,MSUDF}



5STAR 9001W CHEYENNE 513 {DLF,HYF,IEF}

P43628942 JDB N037 MISS ADVANCE T049 {DLF,HYF,IEF,MSUDF}

CE	BW	WW	YW	Milk	
0.8	67%	4.2	79%	63	17%
94	32%	24	63%		
SC	Marb	RE	BMI\$	CHBS	
1.0	43%	0.10	46%	0.61	12%
306	82%	115	44%		

TN	KY
BW	87
205 Wt	650
365 Wt	980
FS	4.5
SC	36
Dam Prod	8@108
Eye Pigment	
Left	Right
40	40



- This is the first bull that we have offered from the Cheyenne cow family. Flush sisters sold as Lots 3A, 3B and 3C and a maternal sister sold as Lot 21 in our fall sale. Those four heifers sold for an average of \$3,825.
- Top 20% for WW and RE



Lot 11 - 5STAR 18U HAGGARD 036 ET

12 H 18U HEADLINER 066 ET {DLF,HYF,IEF,MSUDF}

BULL | P44193234 | Calved: 10/6/20 | Tattoo: RE H066 | Scurred



GOLDEN-OAK FUSION 3S {DLF,HYF,IEF,MSUDC}

GOLDEN OAK OUTCROSS 18U {SOD}{DLF,HYF,IEF,MSUDF}

P42963135 GOLDEN-OAK 60D MALLORY 15M {HYP}

G HEADLINER 263 {HYP}



H MISS HEADLINER 860 {DLF,HYF,IEF}

P42962621 H MISS MAGNITUDE 112 {HYP}

CE	BW	WW	YW	Milk	
2.4	52%	4.9	89%	58	35%
88	48%	27	43%		
SC	Marb	RE	BMI\$	CHBS	
1.1	32%	0.23	15%	0.39	54%
322	73%	129	18%		

TN	KY
BW	82
205 Wt	581
365 Wt	976
FS	5.1
SC	37
Dam Prod	9@95
Eye Pigment	
Left	Right
100	100



- These two flush brothers are bred to be maternal legends. When we mated Outcross to Nawanda Sue it was an attempt to create a bulletproof cow. Early indications are that it was a success as evidenced by their flush sister that sold as Lot 12 in our fall sale.
- Top 20% for Marb and CHBS
- Top 35% for WW and SC



Lot 12 - H 18U HEADLINER 066 ET

13 H 18U HEADLINER 072 ET {DLF,HYF,IEF,MSUDF}

BULL | P44193239 | Calved: 10/21/20 | Tattoo: RE H072 | Scurred



GOLDEN-OAK FUSION 3S {DLF,HYF,IEF,MSUDC}

GOLDEN OAK OUTCROSS 18U {SOD}{DLF,HYF,IEF,MSUDF}

P42963135 GOLDEN-OAK 60D MALLORY 15M {HYP}

G HEADLINER 263 {HYP}



H MISS HEADLINER 860 {DLF,HYF,IEF}

P42962621 H MISS MAGNITUDE 112 {HYP}

CE	BW	WW	YW	Milk	
2.5	51%	3.2	58%	53	58%
83	65%	27	45%		
SC	Marb	RE	BMI\$	CHBS	
1.4	10%	0.14	33%	0.43	44%
399	22%	108	62%		

TN	KY
BW	72
205 Wt	491
365 Wt	865
FS	4.3
SC	35.5
Dam Prod	9@95
Eye Pigment	
Left	Right
0	25



- If you are looking to produce replacement heifers either one of these flush brothers will do the job.
- Top 10% for SC
- Top 35% for Marb and BMI\$



GOLDEN OAK OUTCROSS 18U - Sire of Lots 11, 12 and 13

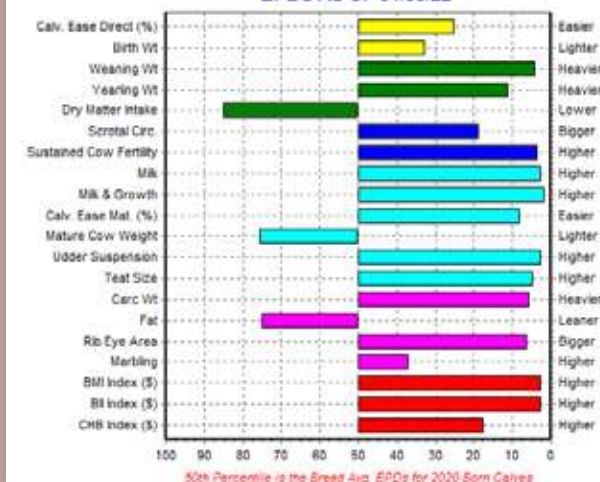


H B711 Honorable 057



Lot 14 - H B711 HONORABLE 057

EPD Percentiles for H B711 HONORABLE 057 (DLF,HYF,IEF,MSUDF) (P44180543) EPDS AS OF 01/03/22



14

H B711 HONORABLE 057 (DLF,HYF,IEF,MSUDF)

BULL | P44180543 | Calved: 9/5/20 | Tattoo: RE H057 | Homozygous Polled



CHURCHILL SENSATION 028X (SOD)(DLF,HYF,IEF,MDF)

KCF BENNETT SENSATION B711 ET (DLF,HYF,IEF,MSUDF)

P43595078 KCF MISS PROFICIENT U201 (DLF,HYF,IEF,MSUDF,MDF)

TRM 2128 37E 121 KUDZU 4066 (SOD)(DLF,HYF,IEF)

BHF 4066 MISS AMBER (DLF,HYF,IEF)

P42906650 JWR HFF 204M MARLENE 049S (DOD)(HYP)

CE	BW	WW	YW	Milk
5.6 25%	2.1 32%	69 5%	104 77%	37 4%
SC	Marb	RE	BMI\$	CHBS
1.3 15%	0.13 36%	0.68 6%	471 3%	131 16%

TN	KY
BW	72
205 Wt	762
365 Wt	1148
FS	6.2
SC	37
Dam Prod	10@104
Eye Pigment	
Left	Right
10	10



- Here is the most powerful bull in the offering. Honorable 057 will see heavy use within our program and we believe he has the potential to be B711's replacement.
- Top 5% for WW, Milk and BMI\$
- Top 15% for YW, SC, RE and CHBS



Hereford Bulls



15 H B711 HERITAGE 049 {DLF,HVF,IEF,MSUDF}

BULL | P44180535 | Calved: 8/30/20 | Tattoo: RE H049 | Homozygous Polled



CHURCHILL SENSATION 028X {SOD}{DLF,HVF,IEF,MDF}

KCF BENNETT SENSATION B711 ET {DLF,HVF,IEF,MSUDF}

P43595078 KCF MISS PROFICIENT U201 {DLF,HVF,IEF,MSUDF,MDF}

PWF RHF 25L WRANGLER 9001W {SOD}{DLF,HVF,IEF,MSUDF}

H MISS WRANGLER Y20 {DOD}{DLF,HVF,IEF}

P43254077 H MISS SUPREME FORTUNE 684 {DLF,HVF,IEF}



CE	BW	WW	YW	Milk	
-2.2	87%	2.6	43%	51	68%
78	78%	23	69%		
SC	Marb	RE	BMI\$	CHBS	
0.8	66%	-0.01	85%	0.27	79%
369	40%	69	100%		

BW	86
205 Wt	668
365 Wt	1011
FS	5.6
SC	37
Dam Prod	7@106
Eye Pigment	
Left	Right
100	100



- This might be the most capable bull in the offering when it comes to producing replacement females. We just successfully flushed his 10 year old DOD mother this winter for the first time. The B711 x 9001W cross doesn't miss.
- Top 45% for BW and BMI\$



Lot 15 - H B711 HERITAGE 049

16 H B711 HOMEMADE 054 {DLF,HVF,IEF,MSUDF}

BULL | 44180538 | Calved: 9/1/20 | Tattoo: RE H054 | Horned



CHURCHILL SENSATION 028X {SOD}{DLF,HVF,IEF,MDF}

KCF BENNETT SENSATION B711 ET {DLF,HVF,IEF,MSUDF}

P43595078 KCF MISS PROFICIENT U201 {DLF,HVF,IEF,MSUDF,MDF}

5STAR 57U CANNON A07 {DLF,HVF,IEF,MSUDF}

H A07 COOKIE 534 {DLF,HVF,IEF}

43628970 H MISS WRANGLER Z10 {DOD}{DLF,HVF,IEF}



CE	BW	WW	YW	Milk	
-1.5	84%	4.8	88%	61	21%
95	30%	29	31%		
SC	Marb	RE	BMI\$	CHBS	
1.0	43%	0.05	65%	0.85	1%
320	74%	117	39%		

TN	KY
BW	90
205 Wt	592
365 Wt	908
FS	5.6
SC	35
Dam Prod	4@102
Eye Pigment	
Left	Right
100	50



- The B711 cattle work well in every segment of the industry. Baldie females out of B711 sons will be bulletproof.
- Top 1% for RE
- Top 30% for WW, YW and Milk



KCF BENNETT SENSATION B711 ET - Sire of Lots 14 - 21

17 H B711 HONOR ROLL 055 {DLF,HVF,IEF,MSUDF}

BULL | P44180540 | Calved: 9/3/20 | Tattoo: RE H055 | Scurred



CHURCHILL SENSATION 028X {SOD}{DLF,HVF,IEF,MDF}

KCF BENNETT SENSATION B711 ET {DLF,HVF,IEF,MSUDF}

P43595078 KCF MISS PROFICIENT U201 {DLF,HVF,IEF,MSUDF,MDF}

PWF RHF 25L WRANGLER 9001W {SOD}{DLF,HVF,IEF,MSUDF}

H 9001W MS FIREWORKS 537 {DLF,HVF,IEF}

P43628973 SF MS FIREWORKS R11 {DLF,HVF,IEF}



CE	BW	WW	YW	Milk	
6.2	21%	2.4	38%	54	53%
81	70%	35	6%		
SC	Marb	RE	BMI\$	CHBS	
1.2	23%	0.00	82%	1.00	1%
451	5%	131	16%		

TN	KY
BW	78
205 Wt	579
365 Wt	912
FS	5.6
SC	39.5
Dam Prod	4@100
Eye Pigment	
Left	Right
100	100



- This is the third B711 x 9001W in a row. Buy the group and put consistency into your next calf crop.
- Top 1% for RE
- Top 5% for BMI\$ and Milk
- Top 25% for CE, SC and CHBS



PWF RHF 25L WRANGLER 9001W - Maternal grandsire of Lot 17

18 5STAR B711 HEAVYWEIGHT 042 {DLF,HVF,IEF,MSUDF}

BULL | P44180541 | Calved: 9/3/20 | Tattoo: RE 5042 | Scurred



CHURCHILL SENSATION 028X {SOD}{DLF,HVF,IEF,MDF}

KCF BENNETT SENSATION B711 ET {DLF,HVF,IEF,MSUDF}

P43595078 KCF MISS PROFICIENT U201 {DLF,HVF,IEF,MSUDF,MDF}

BOYD MASTERPIECE 0220 {SOD}{DLF,HVF,IEF,MSUDF,MDF}

5STAR 0220 MISS ADVANCE 717ET {DLF,HVF,IEF,MSUDF}

P43847330 JDB N037 MISS ADVANCE T049 {DLF,HVF,IEF,MSUDF}



CE	BW	WW	YW	Milk	
-0.2	76%	3.7	69%	62	18%
94	34%	28	30%		
SC	Marb	RE	BMI\$	CHBS	
1.7	2%	0.14	33%	0.79	2%
487	2%	131	18%		

TN	KY
BW	84
205 Wt	549
365 Wt	925
FS	5.1
SC	41.5
Dam Prod	2@87
Eye Pigment	
Left	Right
100	100



- Here is a bull that has B711 on the top side and traces to T049 on the bottom. He will cover all the bases.
- Top 2% for SC, RE and BMI\$
- Top 20% for WW and CHBS



BOYD MASTERPIECE 0220 - Maternal grandsire of Lot 18

A Lasting Legacy



Hereford Bulls



Lot 19 - H B711 HIGHLIGHTER 022

19

H B711 HIGHLIGHTER 022 {DLF,HYF,IEF,MSUDF}

BULL | P44158576 | Calved: 3/21/20 | Tattoo: RE H022 | Homozygous Polled



CHURCHILL SENSATION 028X {SOD}{DLF,HYF,IEF,MDF}

KCF BENNETT SENSATION B711 ET {DLF,HYF,IEF,MSUDF}

P43595078

KCF MISS PROFICIENT U201 {DLF,HYF,IEF,MSUDF,MDF}

PWF RHF 25L WRANGLER 9001W {SOD}{DLF,HYF,IEF,MSUDF}



H MISS WRANGLER Y09 {DLF,HYF,IEF}

P43254081

H MISS RUSTY 402 {HYF}

CE		BW		WW		YW		Milk		Dam Prod	8@95
4.6	33%	2.5	41%	56	42%	82	67%	24	64%	Eye Pigment	
SC		Marb		RE		BMIS		CHBS		Left	Right
1.4	10%	0.05	65%	0.42	46%	438	8%	91	94%	100	100



If you have a large group of black cows and want to produce a set of baldies that will top any market then don't sleep on these next three coming two-year-olds. They are all half-to three-quarter sibs and are ready for heavy service.

- Top 10% for SC and BMI\$
- Top 35% for CE

TN	KY
BW	95
205 Wt	671
365 Wt	1039
FS	4.9
SC	33
Dam Prod	8@95
Eye Pigment	
Left	Right
100	100



Lot 20 - H B711 HOMERUN 029

20

H B711 HOMERUN 029 {DLF,HYF,IEF,MSUDF}

BULL | P44158362 | Calved: 4/13/20 | Tattoo: RE H029 | Polled



CHURCHILL SENSATION 028X {SOD}{DLF,HYF,IEF,MDF}

KCF BENNETT SENSATION B711 ET {DLF,HYF,IEF,MSUDF}

P43595078

KCF MISS PROFICIENT U201 {DLF,HYF,IEF,MSUDF,MDF}

5STAR COMTE DE GRASSE Y01 {DLF,HYF,IEF}



H Y01 MAXINE 411 {DLF,HYF,IEF}

P43472580

H MISS MAXIM Y24 {DOD}{DLF,HYF,IEF}

CE		BW		WW		YW		Milk		Dam Prod	6@95
6.6	19%	0.4	9%	47	83%	81	70%	35	7%	Eye Pigment	
SC		Marb		RE		BMIS		CHBS		Left	Right
0.8	66%	0.10	46%	0.63	10%	469	3%	105	70%	100	100



This bull is a sure fire calving ease specialist. He also traces to a very productive cow family with loads of milk.

- Top 10% for BW, Milk, RE and BMI\$
- Top 20% for CE

TN	KY
BW	75
205 Wt	527
365 Wt	1056
FS	5.5
SC	33.5
Dam Prod	6@95
Eye Pigment	
Left	Right
100	100



Lot 21 - H B711 HOTROD 018

21

H B711 HOTROD 018 {DLF,HYF,IEF,MSUDF}

BULL | 44158375 | Calved: 3/15/20 | Tattoo: RE H018 | Horned



CHURCHILL SENSATION 028X {SOD}{DLF,HYF,IEF,MDF}

KCF BENNETT SENSATION B711 ET {DLF,HYF,IEF,MSUDF}

P43595078

KCF MISS PROFICIENT U201 {DLF,HYF,IEF,MSUDF,MDF}

5STAR 57U CANNON A07 {DLF,HYF,IEF,MSUDF}



H A07 DORA 604 {DLF,HYF,IEF}

43675956

H MISS WRANGLER Y20 {DOD}{DLF,HYF,IEF}

CE		BW		WW		YW		Milk		Dam Prod	4@102	
-2.6	89%	4.2	79%	51	69%	73	86%	27	44%	Eye Pigment	Left	Right
SC		Marb		RE		BMIS		CHBS				
1.2	23%	0.25	12%	0.35	64%	401	21%	108	60%	100	100	



This horned bull has been at or near the top of my list since he was a youngster and rightfully so. His dam sold in the fall sale to Weeping Willow Cattle Co. with a 822 lb. steer at side.

- Top 25% for SC, Marb and BMI\$

TN	KY
BW	94
205 Wt	632
365 Wt	1020
FS	5.4
SC	36
Dam Prod	4@102
Eye Pigment	
Left	Right
100	100



Hereford Bulls



22 H R104 ROCKY TOP 068 {DLE,HYF,IEF,MSUDF}

BULL | P44193220 | Calved: 10/8/20 | **Tattoo:** RE H068 | Homozygous Polled



TH 223 711 VICTOR 755T {SOD}{DLE,HYF,IEF,MSUDF,MDF}

MEAD 755T VICTOR R104 {DLE,HYF,IEF}

P43841182 MEAD N468 OF K060 028X {DLE,HYF,IEF,MSUDF}

ILR RED POWER 456B {DLE,HYF,IEF,MSUDF,MDF}

WALKER CMF RACHEL 456B 6101D {DLE,HYF,IEF,MSUDF}

P43791645 GRASSY RUN RACHEL 3005ET {DLE,HYF,IEF,MSUDF}



CE		BW		WW		YW		Milk	
-0.6	78%	1.7	24%	61	22%	95	30%	41	1%
SC		Marb		RE		BMIS		CHBS	
1.3	15%	-0.07	96%	0.53	22%	430	10%	82	98%



- This thick topped bull stems from the Eric Walker program in Tennessee. His dam is fitting in near the top of our fall calving herd.
- Top 1% for Milk
- Top 25% for BW, WW, SC, RE and BMIS



BW	69
205 Wt	621
365 Wt	1070
FS	6.1
SC	35.5
Dam Prod	3@102
Eye Pigment	
Left	Right
100	100



Lot 22 - H R104 ROCKY TOP 068

23 SSF R88 FT KNOX 438

BULL | P44193653 | Calved: 9/20/20 | **Tattoo:** LE J438 | Scurred



TH 22R 16S LAMBEAU 17Y {SOD}{DLE,HYF,IEF,MSUDF,MDF}

BOYD FT KNOX 17Y XZ5 4040 {DLE,HYF,IEF,MSUDF,MDF}

P43472233 DOSS MY EYES ADORE U DHZ5 {DLE,HYF,IEF}

MSU TCF REVOLUTION 4R {SOD}{DLE,HYF,IEF}

SSF 082 MS REVOLUTION 288 {DLE,HYF,IEF,MSUDF}

P43741903 SSF 4102 LADY SHREK 082

CE		BW		WW		YW		Milk	
2.4	52%	2.0	30%	56	45%	83	64%	24	65%
SC		Marb		RE		BMIS		CHBS	
0.9	55%	0.06	61%	0.53	22%	359	46%	103	74%



- Here is a Fort Knox son that stems from the Jordan's at Sunny Side Farm in Ohio. It took him a little while to get going but he is really hitting his stride and will be ready for heavy service this summer.
- AHA GE-EPD will be available at the sale

BW	77
205 Wt	555
365 Wt	785
FS	4.9
SC	31
Dam Prod	3@102
Eye Pigment	
Left	Right
100	100



BOYD FT KNOX 17Y XZ5 4040 - Sire of Lot 23

24 H 5714 HERITAGE 071 {DLE,HYF,IEF,MSUDF}

BULL | P44192949 | Calved: 10/20/20 | **Tattoo:** RE H071 | Homozygous Polled

CHURCHILL KICKSTART 501C ET {DLE,HYF,IEF,MSUDF,MDF}

5STAR 501C ESPRESSO 714 {DLE,HYF,IEF,MSUDF}

P43836953 5STAR 9001W CHEYENNE 513 {DLE,HYF,IEF}

GVF 11X POWERSTROKE 10B {DLE,HYF,IEF}

GVF STROKES STELLA 29D {DLE,HYF,IEF}

P43754686 GVF BONASTELLA 20Z {HYF}



CE		BW		WW		YW		Milk	
3.0	46%	0.2	7%	51	67%	80	71%	30	27%
SC		Marb		RE		BMIS		CHBS	
0.9	55%	-0.09	98%	0.40	51%	316	76%	108	62%



- Don't overlook this Espresso son as he is one of the youngest in the fall yearling bunch.
- Top 10% for BW
- Top 30% for Milk



BW	65
205 Wt	579
365 Wt	835
FS	5.3
SC	38
Dam Prod	1@97
Eye Pigment	
Left	Right
100	100



5STAR 5083 CHEYENNE 932 - Top selling female from 2021 Fall Sale
Maternal sibling to sire of Lot 24

25 H 5814 HEARTBREAKER 067 {DLE,HYF,IEF,MSUDF}

BULL | P44193209 | Calved: 10/6/20 | **Tattoo:** RE H067 | Homozygous Polled

BOYD MASTERPIECE 0220 {SOD}{DLE,HYF,IEF,MSUDF,MDF}

5STAR 0220 FABIO 814 ET {DLE,HYF,IEF,MSUDF}

P43887004 JDB N037 MISS ADVANCE T049 {DLE,HYF,IEF,MSUDF}

RVP 46A GAME CHANGER 114C {DLE,HYF,IEF,MSUDF}

H 114C LADY VICTRA 847 {DLE,HYF,IEF,MSUDF}

P43950235 H 57U LADY VICTRA 15 {DLE,HYF,IEF}



								SC	40
CE		BW		WW		YW		Milk	
-10.0	100%	5.6	94%	53	58%	93	34%	16	94%
SC		Marb		RE		BMIS		CHBS	
1.4	10%	0.07	57%	0.05	98%	217	100%	82	98%
								Dam Prod	1@101
								Eye Pigment	
								Left	Right
								25	75



- This is the only Fabio in the offering and his two year old dam is on the fast track to the donor pen.
- Top 10% for SC
- Top 35% for YW

BW	75
205 Wt	599
365 Wt	958
FS	4.6
SC	40
Dam Prod	1@101
Eye Pigment	
Left	Right
25	75



Lot 25 - H 5814 HEARTBREAKER 067

Created by Angus Genetics Inc. (AGI) and powered by Neogen GeneSeek, our sale cattle have been tested with the first DNA profile designed specifically for Angus cattle, Angus GSSM.

Each marker is intentionally chosen from the Angus genome to drive the Angus breed into the future. It offers maximum accuracy for genomically enhanced EPDs at great value. Testing heifer and bull calves ultimately allows you to reap the benefits of faster genetic gain in your commercial herd. With Angus GS, it's all about you, our customer.

Trait Progeny Equivalents

Calving Ease Direct (CED)	26
Birth Weight (BW)	23
Weaning Weight (WW)	27
Yearling Weight (YW)	23
Dry Matter Intake (DMI)	12
Yearling height (YH)	17
Scrotal Circumference (SC)	15
Docility (DOC)	12
Claw Set (CLAW)	10
Foot Angle (ANGLE)	10
Heifer Pregnancy (HP)	17
Calving Ease Maternal (CEM)	20
Milk	36
Mature Weight (MW)	15
Mature Height (MH)	9
Carcass Weight (CW)	15
Carcass Marbling (MARB)	11
Carcass Ribeye (RE)	17
Carcass Fat (FAT)	14



Make Angus GS work for you at Angus.org/AGI/AngusGS or contact your Neogen GeneSeek representative at (402) 435-0665.





Angus Bulls



26 H 6848 HERITAGE 036 ET {AMF,D2F,DDF,M1F,NHF,DSF}

ANGUS BULL | 20200459 | Calved: 8/10/20 | Tattoo: H036

COLEMAN CHARLO 0256



SAV RAINDANCE 6848

18578965 SAV BLACKCAP MAY 4136
PA FULL POWER 1208

CURTIN LASS 5415

18422508 EXAR LASS 83518



CE	BW	WW	YW	Milk	SC
3 80%	1.9 65%	67 30%	121 25%	25 55%	1.56 15%
DOC	CW	Marb	RE	\$M	\$W
16 60%	44 55%	.36 80%	.62 50%	50 80%	67 35%

BW	70
205 Wt	756
365 Wt	1020
FS	5.2
SC	39.5
Dam Prod	2@102
SG	\$B



- These two flush brothers are out of the \$465,000 valued SAV Raindance 6848. A flushmate sister sold as Lot 9 in our fall sale.
- Top 15% for SC
- Top 30% for WW and YW



SAV RAINDANCE 6848- Sire of Lots 26 and 27

27 H 6848 HOMEGROWN 040 ET {AMF,DSE,DDF,M1F,NHF,DSF}

ANGUS BULL | 20200460 | Calved: 8/17/20 | Tattoo: H040

COLEMAN CHARLO 0256



SAV RAINDANCE 6848

18578965 SAV BLACKCAP MAY 4136
PA FULL POWER 1208

CURTIN LASS 5415

18422508 EXAR LASS 83518



CE	BW	WW	YW	Milk	SC
3 80%	1.0 45%	61 45%	102 60%	17 95%	.88 50%
DOC	CW	Marb	RE	\$M	\$W
13 75%	32 85%	.23 90%	.95 10%	44 90%	56 65%

BW	69
205 Wt	654
365 Wt	1005
FS	5.2
SC	37
Dam Prod	2@102
SG	\$B



- You will travel many miles to find Angus bulls bred this well with the level of customer service that comes standard.
- Top 10% for RE
- Top 45% for BW and WW



Lot 27 - H 6848 HOMEGROWN 040 ET

28 H 2002B HOMETOWN 039 ET {AMF,D2F,DDF,M1F,NHF,DSF}

ANGUS BULL | 20197474 | Calved: 8/17/20 | Tattoo: H039

EXAR UPSHOT



EXAR DENVER 2002B

17160560 EXAR ROYAL LASS 1067
SAV BISMARCK 5682

EXAR RITA 5999

16470868 RITA 1198 OF 2536 RITO 616



CE	BW	WW	YW	Milk	SC
9 30%	2.3 75%	75 15%	128 20%	27 40%	1.27 25%
DOC	CW	Marb	RE	\$M	\$W
10 85%	54 30%	.48 65%	.55 60%	63 50%	78 15%

BW	68
205 Wt	820
365 Wt	1040
FS	5
SC	40
Dam Prod	15@104
SG	\$B



- This bull has been on our radar since he was a young calf. Flush sisters sold as Lots 2A and 2B in our fall sale. We plan to use him heavily in our program.
- Top 15% for WW and \$W
- Top 30% for CE, YW, SC and CW
- Top 40% for Milk and \$B



Lot 28 - H 2002B HOMETOWN 039 ET



Angus Bulls



BASIN PAYWEIGHT 1682 - Sire of Lot 29

29

H 1682 HEAVYWEIGHT 044 ET (AMF,DSF,DDF,MIF,NHF,DSF)

ANGUS BULL | 20197473 | Calved: 8/20/20 | Tattoo: H044

EBISON PAYWEIGHT 006S

BASIN PAYWEIGHT 1682

17038724

21AR0 LASS 7017

EXAR DENVER 2002B

CURTIN EVERGREEN 6417

18766849

EXAR EVERGREEN 0077



BW	62
205 Wt	610
365 Wt	910
FS	4.8
SC	34.5
Dam Prod	1@101



- The Payweight 1682 cattle need no introduction. Put this powerhouse to work in your program. Flushmate sister sold as Lot 10 in our fall sale.
- Top 35% for WW, \$M and \$W



Lot 30 - H 7933 HARVESTER 015

30

H 7933 HARVESTER 015 (AMF,DSF,DDF,MIF,NHF,DSF)

ANGUS BULL | 20197472 | Calved: 3/11/20 | Tattoo: H015

SAV REGARD 4863

SAV QUARTERBACK 7933

18913003

SAV BLACKCAP MAY 3525

SAV TEN SPEED 3022

SAV MADAME PRIDE 6668

18542175

SAV MADAME PRIDE 5290



BW	74
205 Wt	651
365 Wt	1140
FS	6.2
SC	35
Dam Prod	2@99



- When you travel to North Dakota in February to purchase a donor dam you'd like to think that she'd come home and produce a bull calf like this on her first try every time. It doesn't always work that way but fortunately it did this time. Here's your chance to pick up a SAV bred bull for a fraction of what it would cost you out there.
- Top 1% for WW
- Top 2% for YW
- Top 10% for DOC and CW
- Top 20% for RE, \$W and \$B



HA COWBOY UP 5405 - Sire of Lot 31

31

H 5405 GROWTHFUND 941

ANGUS BULL | 19576608 | Calved: 8/31/19 | Tattoo: H941

HA OUTSIDE 3008

HA COWBOY UP 5405

18286467

HA BLACKCAP LADY 1602

PA FULL POWER 1208

CURTIN LASS 5415

18422508

EXAR LASS 83518

BW	75
205 Wt	710
365 Wt	1048
FS	5.5
SC	38
Dam Prod	2@102



- We close out the bull offering with a two year old Cowboy Up son that we have used to clean up recipis. He is the sire of a number of the fall born baldie calves in this sale.
- Top 30% for BW
- Top 45% for CE

Angus Breed Average EPDs

CE	BW	WW	YW	Milk	SC	DOC	CW	Marb	RE	\$M	\$W	\$G
7	1.0	59	105	25	.82	17	40	.53	.54	57	61	44

A Lasting Legacy



ET Heifer Splits



32A 5STAR 11X JULIP 125 ET

COW | P44302459 | Calved: 8/20/21 | Tattoo: RE 5125 |

TH 122 711 VICTOR 719T (SOD) (DLF,HYF,IEF,MSUDF,MDF)

TH 71U 719T MR HEREFORD 11X (SOD) (DLF,HYF,IEF)

P43101172 TH 7N 45P RITA 71U (DLF,HYF,IEF)

BOYD MASTERPIECE 0220 (SOD) (DLF,HYF,IEF,MSUDF,MDF)

SSF 503 LADY MASTERPIECE 137 (DOD) (DLF,HYF,IEF)

P43274187 PWF NICOLETTE 2L P503 (HYP)

CE		BW		WW		YW		Milk	
-0.4	76%	3.2	58%	53	60%	82	68%	28	38%
SC		Marb		RE		BMI\$		CHBS	
0.7	77%	-0.07	96%	0.37	59%	374	37%	96	88%

- We wanted to offer a little something special in our inaugural bull sale and this Lot should fit the profile. This awesome heifer calf is a full sib to Lots 11A, 11B and 11C from our fall sale that averaged \$4,683.
- Sells as Choice Lot alongside Recipient Dam, Lot 32B.



5STAR 11X HEREFORD QUEEN 021ET - Flushmate to Lot 32A

32B PREGNANCY - BELLE AIR X CHEYENNE

BAR S LHF 028 240 (CHB) (DLF,HYF,IEF)



BR BELLE AIR 601T (CHB) (DLF,HYF,IEF,MSUDF)

43724674 BR BELLE 4082 ET (DLF,HYF,IEF,MSUDF)

PWF RHF 25L WRANGLER 9001W (SOD) (DLF,HYF,IEF,MSUDF)

5STAR 9001W CHEYENNE 513 (DLF,HYF,IEF)

P43628942 JDB N037 MISS ADVANCE T049 (DLF,HYF,IEF,MSUDF)

		CE		BW		WW		YW		Milk	
	Sire	0.9	%	2.2	%	63	%	106	%	40	%
	Dam	-3.0	%	3.4	%	58	%	90	%	25	%
		SC		Marb		RE		BMIS		CHBS	
	Sire	2.8	%	0.56	%	0.46	%	432	%	166	%
	Dam	1.0	%	0.03	%	0.64	%	252	%	111	%

- Recipient - Black baldie, tag X815, 3-year-old
- Keep this pair together and take home the ultimate 3-1 package. This confirmed Cheyenne x Belle Air pregnancy will be special.
- Due 8/18/22



5STAR 18U CHEYENNE 038 ET - Top selling open heifer from 2021 Fall Sale. Maternal sibling to Lot 32B

33A 5STAR X651 YOUR WAY 120 ET

COW | P44295235 | Calved: 8/15/21 | Tattoo: RE 5120 |

EFBEEF FOREMOST U208 (SOD) (CHB) (DLF,HYF,IEF,MSUDF)

EFBEEF TFL U208 TESTED X651 ET (SOD) (CHB) (DLF,HYF,IEF,MSUDF)

P43091736 EFBEEF P606 MABEL R415

NJW 73S M326 TRUST 100W ET (SOD) (CHB) (DLF,HYF,IEF,MSUDF,MDF)

RVP STAR 100W YOUR WAY ET 122V (DLF,HYF,IEF)

P43451886 STAR BETHANY 52M (DLF,HYF,IEF)

CE		BW		WW		YW		Milk	
6.3	20%	2.0	30%	61	23%	96	25%	28	35%
SC		Marb		RE		BMS		CHBS	
0.8	66%	0.45	2%	0.46	37%	446	6%	138	10%

- The Your Way females have been very productive and this mating to X651 should only make them that much better.
- Lot 33B: Black baldie, tag 431, 2-year-old
- Pasture exposed from 11/20/21 to 1/1/2022 to 5STAR 18U GOLD GLOVE 908 ET. Safe in calf.



RVP STAR 100W YOUR WAY ET 122V - Donor dam of Lot 33A

34A H 206A NAWANDA SUE 145 ET

COW | P44302462 | Calved: 8/23/21 | Tattoo: RE H145 |

CMR GVP MR MATERNAL 156T (SOD) (DLF,HYF,IEF,MSUDF,MDF)

NJW PMH 66X 156T LUX 206A ET (DLF,HYF,IEF)

P43460921 NJW 78P 4037 LUXURY 66X ET (DLF,HYF,IEF,MSUDF)

G HEADLINER 263 (HYP)

H MISS HEADLINER 860 (DLF,HYF,IEF)

P42962621 H MISS MAGNITUDE 112 (HYP)

CE		BW		WW		YW		Milk	
0.4	70%	3.1	55%	48	79%	75	83%	26	51%
SC		Marb		RE		BMSI\$		CHBS\$	
0.9	55%	0.22	16%	0.21	88%	367	41%	114	46%

- You wouldn't have felt like you had been to a Haught sale without an opportunity to buy a Nawanda Sue daughter so here she is. We were excited for the 860 x Lux flush and when she put 41 viable embryos in the dish we were grateful.
- Lot 34B: Black baldie, tag X814, 3-year-old
- Pasture exposed from 11/20/21 to 1/1/2022 to 5STAR 18U GOLD GLOVE 908 ET. Safe in calf.



NJW PMH 66X 156T LUX 206A ET - Sire of Lot 34A



Commercial Females



35 Black baldie, tag 990, 2-year-old

- Pasture exposed 11/20/21 to 1/1/2022 to WLKR JM GUIDE 722 333 960G ET. Safe in calf.
- **Lot 35A:** Heifer calf, Calved: 10/14/21

37 Black baldie, tag H797, 4-year-old

- Pasture exposed from 11/20/21 to 1/1/2022 to 5STAR 18U GOLD GLOVE 908 ET. Safe in calf.
- **Lot 37A:** Heifer calf, Calved: 9/29/21

39 Black baldie, tag X506, 6-year-old

- Pasture exposed 11/20/21 to 1/1/2022 to WLKR JM GUIDE 722 333 960G ET. Safe in calf.
- **Lot 39A:** Heifer calf, Calved: 10/20/21

41 Black baldie, tag NT SIM, 2-year-old

- Pasture exposed 11/20/21 to 1/1/2022 to WLKR JM GUIDE 722 333 960G ET. Safe in calf.
- **Lot 41A:** Steer calf, Calved: 10/5/21

43 Black baldie, tag X809, 3-year-old

- Pasture exposed from 11/20/21 to 1/1/2022 to 5STAR 18U GOLD GLOVE 908 ET. Safe in calf.
- **Lot 43A:** Steer calf, Calved: 9/14/21

45 Hereford, tag L43, 3-year-old

- Pasture exposed from 11/20/21 to 1/1/2022 to 5STAR 18U GOLD GLOVE 908 ET. Safe in calf.
- **Lot 45A:** Steer calf, Calved: 9/1/21

47 Hereford, tag L817, 4-year-old

- Pasture exposed from 11/20/21 to 1/1/2022 to 5STAR 18U GOLD GLOVE 908 ET. Safe in calf.
- **Lot 47A:** Steer calf, Calved: 9/8/21

49 Black baldie, tag X908, 2-year-old

- Pasture exposed from 6/4/21 to 9/1/21 to WLKR JM GUIDE 722 333 960G ET. Safe in calf.

51 Black baldie, tag 33, 3-year-old

- Pasture exposed from 5/15/21 - 9/1/21 to H 5405 GROWTHFUND 941. Safe in calf.

53 Black baldie, tag H799, 4-year-old

- Pasture exposed from 5/15-6/17/2021 to TH 76A 206E GROWTH FUND 248G then from 6/17 - 9/1/2021 to KCF BENNETT SENSATION B711 ET. Safe in calf.

55 Red baldie, tag H890, 2-year-old

- AI bred to TH 76A 206E GROWTH FUND 248G on 12/1/21 then pasture exposed to KCF BENNETT NEVADA H454 from 12/10/21 to 1/1/22. Safe in calf.

57 Black baldie, tag X099, 1-year-old

- Sells open and ready to breed this summer.

59 Black baldie, tag X101, 1-year-old

- Sells open and ready to breed this summer.

61 Black baldie, tag X103, 1-year-old

- Sells open and ready to breed this summer.

36 Black baldie, tag 464, 2-year-old

- Pasture exposed from 11/20/21 to 1/1/2022 to 5STAR 18U GOLD GLOVE 908 ET. Safe in calf.
- **Lot 36A:** Heifer calf, Calved: 8/29/21

38 Black baldie, tag 67A, 5-year-old

- Pasture exposed from 11/20/21 to 1/1/2022 to 5STAR 18U GOLD GLOVE 908 ET. Safe in calf.
- **Lot 38A:** Heifer calf, Calved: 8/19/21

40 Black baldie, tag 100, 2-year-old

- Pasture exposed from 11/20/21 to 1/1/2022 to 5STAR 18U GOLD GLOVE 908 ET. Safe in calf.
- **Lot 40A:** Steer calf, Calved: 9/1/21

42 Black baldie, tag X807, 3-year-old

- Pasture exposed from 11/20/21 to 1/1/2022 to 5STAR 18U GOLD GLOVE 908 ET. Safe in calf.
- **Lot 42A:** Steer calf, Calved: 8/27/21

44 Black baldie, tag X850, 3-year-old

- Pasture exposed from 11/20/21 to 1/1/2022 to 5STAR 18U GOLD GLOVE 908 ET. Safe in calf.

46 Hereford, tag L40, 3-year-old

- Pasture exposed from 11/20/21 to 1/1/2022 to 5STAR 18U GOLD GLOVE 908 ET. Safe in calf.
- **Lot 46A:** Steer calf, Calved: 9/5/21

48 Black baldie, tag H021, 2-year-old

- Pasture exposed from 6/4/21 to 9/1/21 to WLKR JM GUIDE 722 333 960G ET. Safe in calf.

50 Red baldie, tag X904, 2-year-old

- Pasture exposed from 6/4/21 - 9/1/21 to WLKR JM GUIDE 722 333 960G ET. Safe in calf.

52 Black baldie, tag 19, 4-year-old

- Pasture exposed from 5/15-6/17/2021 to TH 76A 206E GROWTH FUND 248G then from 6/17 - 9/1/2021 to KCF BENNETT SENSATION B711 ET. Safe in calf.

54 Black baldie, tag X804, 4-year-old

- Pasture exposed from 5/15/21 - 9/1/21 to H 5405 GROWTHFUND 941. Safe in calf.

56 Black baldie, tag Y01, 1-year-old

- Sells open and ready to breed this summer.

58 Black baldie, tag X095, 1-year-old

- Sells open and ready to breed this summer.

60 Black baldie, tag X102, 1-year-old

- Sells open and ready to breed this summer.

62 Black, tag X105, 1-year-old

- Sells open and ready to breed this summer.

"There is no such thing as a self-made man. You will reach your goals only with the help of others."

George Shinn



"Get settled in what you want to do and the way you want to do it. Then don't go astray any farther than you have to."

Alfieri Goff

Staff - A. Goff & Sons: picture from first production catalog in 1951

Top row, left to right: James Ayers, Farm hand since 1893; Lester Hinton, farm hand; Clyde Clevenger, herdsman; Denver L. Goff, Manager.

Bottom row, left to right: Marion Goff, son of Denver, and 4th generation; and Ronald Hatfield, step-son of Clyde.



Pictured left to right: Derek Haught, Bobby Daniel, Eric Goff and Ira Haught.



Pictured left to right: Doug Haught, Daniel Richmond and Steve Riddle.

Derek M. Haught
248 River Bend Ln.
Smithville, WV 26178



HAUGHT
Brothers

A Lasting Legacy

Performance Tested Bull & Commercial Female Sale

MONDAY . FEBRUARY 21 . 2022 . 12 NOON (EST)

4975 BUNNELLS RUN RD . HARRISVILLE . WV