

the advantage

national junior hereford association newsletter — Spring 2016

Memories to be Made and Stories to be Told

Welcome to Madison and "A Hereford Scene in 2016."

by Cody Jensen

Just like every Hereford junior and Hereford enthusiast, I am extremely excited for the Junior National Hereford Expo (JNHE) in Madison, Wis. In a few short months we will all be meeting up with our Hereford family from coast to coast, from Canada to the Gulf and everywhere in between. This week-long event is the one thing I have looked forward to ever since my first junior national in Billings, Mont., and I can truly see why we have been nominated the best junior national the past two years in the Best of the Barns contest.

Thinking back to all the great memories I have had at JNHE, I can't wait to see what this one has in store. No matter what show I'm at, there always seems to be a story brought up about JNHE. I am eager for this year in Madison. We are going to be the first junior national at this brand new top of the line facility. I have heard a lot of great things about the Alliant Energy Center. Including tons more space so you and the cattle can be comfortable for our week-long event.

To start the week off we are having an ice cream social on Saturday, July 9, featuring Wisconsin's famous Sassy Cow Ice Cream. This will be a great time to catch up with old

friends and meet new ones. Sunday there will also be a Celebrate Wisconsin brat feed, which I am sure, will be delicious. The junior mixer and brat feed will be a great time to ask any of the board members about questions you may have for the exciting and great week coming. We have also made one change in the schedule to look out for. We will be showing group classes directly after team fitting, to help the show wrap up faster on Friday and to give the group classes some added exposure.

I have a few challenges for you juniors that I had when I was a young member. These challenges were proposed by our amazing Kansas advisor Sue Rowland. She always challenged us to try every contest, at least once, and her most famous one, she always encouraged us to meet at least three new people at every show. There are several contests to partake in, from the Hereford bowl all the way to team fitting and individual sales. These contests are not just something to fill the week of fun with, but in the long run, will essentially assist you as you build a career path in the livestock industry.

It is hard to believe this is going to be my last JNHE as a board member. The feeling is



bittersweet, but exciting at the same time. The past three years have seemed to last forever, until now, and it's sad that the four retiring board members have to step down and hand off the infamous maroon jackets. Nonetheless, the exciting part is the future the Hereford industry has yet to unwrap as our numbers and membership continue to rise to new records.

Finally, I want to close with saying thank you to everyone who has ever planned or helped at a JNHE, which has impacted numerous juniors in countless ways. Also, thank you to all the board members that I have served with, in regards to helping me learn the ropes, or just being there as a friend. I would like to finish with thanking the entire American Hereford Association staff and a special thanks to Amy Cowan and Bailey Clanton for putting up with me the last three years. I hope to see everyone in Madison, and let's continue to make this the best of the barns and I can't wait to hear the stories that will be told from "A Hereford Scene in 2016." ◀



Board of Directors

Chairman:

Cody Jensen, Courtland, Kan.
785-614-2920, cjensen8@ksu.edu

Vice chairman:

Taryn Adcock, Assumption, Ill.
217-820-8249, trose@adcockshowcattle.com

Communications chair:

Kelsey Stimpson, Melba, Idaho
208-936-0455, kscattle@mindspring.com

Membership chair:

Kelsey Repenning, Mitchell, S.D.
605-770-6128, kelsey.repenning@gmail.com

Leadership chair:

Jessica Middleswarth, Torrington, Wyo.
307-340-0634, jess.middleswarth@gmail.com

Fundraising chair:

Austin Cole, Bowling Green, Ky.
270-282-1728
austin.cole132@topper.wku.edu

Directors:

Amanda Bacon, Siloam Springs, Ark.
479-957-1039, amanda.bacon@okstate.edu

Mason Blinson, Buies Creek, N.C.,
919-422-5098, meblinson@gmail.com

Steven Green, Mundfordville, Ky.
270-528-1720, gwwherefords@yahoo.com

Brooke Jensen, Courtland, Kan.
785-614-2037, brookerjensen@outlook.com

Bailey McKay, Marysville, Kan.
308-470-1289, baileymckay14@yahoo.com

Tommie Lynne Mead, Midville, Ga.
406-320-0201
tommie_lynne@hotmail.com

Director of youth activities:

Amy Cowan
P.O. Box 014059, Kansas City, MO 64101
816-842-3757, acowan@hereford.org

Youth activities assistant:

Bailey Clanton
bclanton@hereford.org

JrHereford.org

Meet Your

Queen



by Bailey McKay

Taylor Belle Matheny is no stranger to the Hereford breed. She's a fifth generation Hereford breeder, the daughter of two national junior Hereford board members, a herdsman of the year and the 1988 National Polled Hereford Queen. Obviously, this girl has a power packed pedigree. Taylor Belle has followed in her mother's steps and is your 2016 National Hereford Queen. Now, even most girls who are tomboys want to be a princess at one point in their life. Taylor Belle had the same dream, but she took it one step further. She wanted to be a queen just like her mother, Suzanne, had been. "It is such an honor to be selected as the 2016 National Hereford Queen and to get to represent what I feel is the greatest breed and group of breeders in the world," says Taylor Belle.

Taylor Belle thought she knew what the responsibilities of being a queen were, but it's just a little bit more than she had imagined. The queens must be out at the barns just as early as exhibitors on show day, so that they can make sure that all the class, division champion and supreme awards are in order and ready to be presented. They work with the judge and AHA staff to lead classes, division and champion drives into the ring. Finally, they make sure to take pictures with the awards for champion and reserve divisions and the grand and reserve overall animals.

As Taylor Belle looks back at her reign so far there have only been a few things that have surprised her. "The best surprise to come with this honor is getting to interact with so many little girls who just want to meet and talk to the national queen," says Taylor Belle.

She also didn't realize just how many steps a queen takes.

This fall, if you had asked Taylor Belle what excited her the most about being crowned, she would have told you the people she would get to meet or the relationships she would eventually make. When asked recently she still says the same thing. "The relationships and friendships that I have made just growing up in this breed will last me a lifetime, but I've made even more since I have become the National Hereford Queen."

Taylor Belle and her family have had many achievements through the years, but the one she is the most proud of is when they won the reserve grand and champion bred-and-owned cow-calf pair at the 2015 Junior National Hereford Expo.

Taylor Belle loves serving as the National Hereford Queen. She loves all the youth and breeders she has met and is truly humbled and honored to serve as a representative promoting the Hereford breed. ◀



ATTENTION: Candidates Needed

by Steven Green

Every organization has one specific need. A need for leaders. Individuals with passion, ambition and leadership qualities required to move in a positive direction. The National Junior Hereford Association (NJHA) is a prestigious organization moving toward increasingly unprecedented success. The NJHA prides itself on building youth ready to face tomorrow. The individuals leading this organization are an innovative group of twelve people. The junior board of directors is made up by a brilliant recipe of diversity. Twelve directors span across the country introducing unique experiences and ideas to solve prime industry issues.

Why are candidates needed if there is already a full board? Every summer four new directors are elected as four members rotate off. Each director serves this great organization for three years. The directors spend their term traveling the country, interacting with other organizations and serving as the voice for Hereford youth. If you have a burning desire to make a difference and become a voice for youth around the country, maybe the job is for you.

I remember the moment I knew I wanted to be a director. I was in Kansas City, Mo., at the 2013 Junior National Hereford Expo (JNHE). I saw the directors working in the ring, interacting with kids and being an example. The directors I saw were role models for not only me, but the entire association. That week I decided I was running for the board. In 2014, I filled out the application and took off to Pennsylvania. Running for the board the first time was an incredible experience. I met many great juniors and enjoyed the interviews, but the greatest experience came when I wasn't elected. I learned a

lesson of value. I was very happy for the four members that were elected, but something was missing inside. I knew I needed to run again, so I persevered and returned to Grand Island, Neb., in 2015. Don't let the fear of not being elected prevent you from running. The experience of running for the board is irreplaceable. If you aren't elected, don't give up. Run again, because there is a plan and a reason for everything.

When deciding to run, there is a lot of uncertainty. Questions about the interviews, campaigning and schedule will rise. Don't get too caught up on the doubts. The junior board will be there every step of the way, but it's important to ask questions. Even if it is before JNHE, reach out and find answers from the directors. The first step will be to complete the application. Go through hereford.myreviewroom.com to fill out the application. The application is due May 1, so get started now. Don't be overwhelmed by the application. Start early and take it in strides.

As we inch closer to the 2016 JNHE, start planning your campaign. Have fun with the flyers and the one-on-one process with delegates. Trust me, they love chocolate. JNHE is the most exciting week of the year, and as a candidate, you will have a part in its success. The best advice is to just be yourself. Delegates want to know the real you, so show them why your unique background and leadership skills qualify you to lead the NJHA. My Grandmother told me, "You have one thing to yourself, a life to live." Take hold of your future and make sure you don't miss the opportunity to inspire and lead the future of the Hereford industry. ◀

Seven-step NJHA board of directors application process

- 1) Obtain and submit seven recommendation letters.
- 2) Complete a one-page essay on the topic "My Goal as an NJHA Director."
- 3) Upload a color photograph of yourself (suitable for printing purposes).
- 4) Upload an 8x10 campaign flyer.
- 5) Upload an NJHA Director Nomination Form that has been signed by your state advisor and notarized.
- 6) Complete the application available at hereford.myreviewroom.com
- 7) Double check that you have fulfilled all the tasks. Your application will not be submitted until you do so.

WANTED

**NJHA
BOARD
CANDIDATES**

Available Positions

Northwest Region - 1

Southwest Region - 2

Northeast Region - 2

Southeast Region - 3

Check out the
regional map at
[**JrHereford.org**](http://JrHereford.org)

Four new directors
will be elected at the
2016 JNHE in
Madison, Wis.

**GET ON BOARD
TO LEAD
THE BEST
JUNIOR
ASSOCIATION
IN THE
INDUSTRY!**

A West Texas Leadership Event

by Austin Cole

You know how the old saying goes, "Everything is bigger and better in Texas." Well, this Kentucky boy sure is excited to find out how much bigger and better things really are. I am super pumped for Faces of Leadership (FoL) which will be hosted in Amarillo, Texas, Aug., 6-9. Coming from someone who is from east of the Mississippi, "ranchy" stuff is something that has always excited me. What else can be better than ranch tours and visiting with some great Hereford friends? I personally think this year's FoL conference will top all of the ones in the past.

We are going to start the trip off with an exciting Texas keynote speaker that is going

to get everyone ready and geared up for a fun filled educational four days. One of the coolest things I think we will be doing is going to the Palo Duro Canyon. If you haven't heard of this canyon, it is the second largest canyon in the United States. Palo Duro is located on a state park that has over 29,000 acres of beautiful scenery. In the 1800s there was a ranch near the canyon that ran more than 100,000 head of cattle. While in the canyon we are going to watch a musical that tells a story about the Texas panhandlers in the 1800s with special lighting and water effects. After the show, there will be a firework show. The most important part of any trip

is the food. While in the canyon, we will be eating a famous Texas style barbeque dinner. And, this is only the first day.

The second day we will be loading up the buses and heading off toward our ranch stops. The first stop we will be Barber Ranch in Channing that has been in business for 100 years and home to the 2016 Supreme Champion Bull in Denver. We will then head to New Mexico to visit with the Perez family and see parts of the home of the New Mexico Ladies at C&M Herefords. The final stop of the evening will be just down the road at Copeland & Son's Ranch in Nara Visa, N.M., for a fun-filled tour. Once again, my favorite part, a chuck wagon dinner. This will be very interesting to me to see how people back in the day ate every night after rounding and herding cattle all day.

The final day of FoL this year will not disappoint either. We will be visiting the American Quarter Horse Association (AQHA) and hearing from an excellent role model of mine and past CEO of the American Hereford Association, Mr. Craig Huffhines. Mr. Huffhines will be talking to us about the AQHA. The rest of the day will be at West Texas A&M University where we will hear from speakers like Dr. Ty Lawrence and Dr. Dean Hawkins. They will be talking to us about a huge part of the beef industry, the feedlots. This part of the country is known as "cattle feeding country" where they feed and market over six million head annually. That's 28% of the nation's fed cattle production, so they will know a thing or two about feeding cattle. Closing the night will be a keynote speaker with the topic, "Discover your purpose, ignite your passion, do the work and become the best version of you." Hearing from a speaker like this is going to help each and every one of us become a better person within and a better leader for the future. After our speaker is finished, we will two-step the night away with a fun Texas two-step themed dance. You better bring your dancing boots.

As you can tell FoL this year is going to be a jam-packed, fun-filled educational four days, with lots to offer to everyone. Maybe by the end of the four days, I might be able to survive on a real ranch and figure out what people from Texas mean when they say, "everything is bigger and better in Texas." Don't forget, early bird registration ends on June 15 for only \$300. After June 15, the cost will go up to \$400 and you must be signed up by the July 15 final deadline. I look forward to seeing each and every one of you in West Texas and New Mexico, August 6-9. ◀

FACES^{OF} Leadership

2016 PRIDE Convention

"Texas Style" PRIDE Convention Amarillo, Texas • Aug. 6-9

Saturday, August 6

Welcome to Faces of Leadership

All flights into Amarillo Airport by 1 p.m. • Shuttle to Holiday Inn

Noon-2 p.m. Registration, Hotel Check in and Buffet Lunch at Holiday Inn

2:30 p.m. Welcome to Texas Keynote Speaker

4 p.m. Load buses and depart for Palo Duro Canyon

5:30 p.m. Step on Tour Palo Duro Canyon

6 p.m. Palo Duro Canyon State Park – Texas BBQ Dinner

8:30 p.m. Outdoor Texas Musical and Fireworks following the show – Palo Duro Canyon

10 p.m. Return to Hotel

11:30 p.m. In room curfew, lights out

Sunday, August 7

8 a.m. Breakfast at Holiday Inn

9 a.m. All Aboard the buses for the West Texas and New Mexico Ranch Tours

Evening Tour and Chuck Wagon Steak Dinner at Copeland and Sons Ranch, Nara Visa, N.M.

Monday, August 8

7 a.m. Breakfast at Holiday Inn

8:30 a.m. American Quarter Horse Association Tour, Guest Speaker, Craig Huffhines

10 a.m. Industry Day and Feedlot Tour — Welcome to Cattle Feeding Country

Dr. Ty Lawrence and Dr. Dean Hawkins

Texas Cattle Feeding Association and West Texas A&M – Canyon, Texas

7 p.m. Eddie Slowikowski, Closing Keynote — "Discover Your Purpose, Ignite Your Passion, Do the Work and Become the Best Version of YOU"

8-11 p.m. Texas Two Step

Tuesday, August 9

8 a.m. Breakfast Buffet at Holiday Inn - Check out of Rooms

8:30-11:30 a.m. Closing Session with American Hereford Association Staff and NJHA Board

Depart for Airport and Home



\$300 Early Bird Registration Deadline by June 15

\$400 After June 15 With Final Registration Deadline July 15

Tips for Your JNHE Trip

by Jessica Middleswarth

Spring time is in the air and most people tend to think of flip flops and warm weather, but us cattle kids are thinking about junior nationals being only a few months away. I hope you all are as excited as I am for this year's Junior National Hereford Expo (JNHE), not only will it be another awesome week of red and white cattle, but we all will be heading to the great state of Wisconsin. In these upcoming months, preparing for the trip is always a priority and takes time and effort; so to help you all have a fun and safe trip, here are some tips toward a successful JNHE:



1 Make sure to have the necessary paperwork done, in order, and with you before you leave.

a) Original registration papers

b) Health papers – you may access the proper health requirements for your state at http://datcp.wi.gov/Animals/Animal_Movement/Cattle_Bison/index.aspx

c) Hard copy of your entries

d) Check your tattoos – there is nothing worse than not being able to show your animal because of a missing tattoo. This is easily prevented, so please check the ears before you load them on the trailer.

2 Always give yourself an extra day or two of travel time for the cattle's sake, just in case something unexpected happens on the way there. Phone a friend and find a place to layover.

3 Be sure to check the schedules for arrival, setup times, and when cattle can enter the barn so you will be organized and ready to go.

4 Sleep as much as you can beforehand, it may not seem long, but a week is longer than most expect, and sleep is usually very limited.

5 Last tip for your trip is to be excited and expect to have fun, because this year's JNHE is going to be a great one!

With only four months left till the best week of the year for Hereford exhibitors, it's time to start preparing for "A Hereford Scene in 2016." These five tips will hopefully help you prioritize, organize and make the trip a good and fun experience. Better watch out, Madison here we come. ◀

Steer Entry Changes

Exhibitors Take Note, Pull DNA Today

by Amanda Bacon

If you are planning on exhibiting a steer at the 2016 Junior National Hereford Expo (JNHE) you will have to go through a different process for entering your steer this year. All steer exhibitors will have to submit DNA for their steers prior to entering for the JNHE. Once the exhibitor has received the results of their DNA test back, and there is a DNA profile on the steer, the exhibitor may enter their steer for the JNHE. DNA processing may take up to four weeks to process, so it is important that you get your DNA submitted to the lab sooner, rather than later, due to the length of time that it will take for the lab to get the DNA processed, and the results returned. To start the process, please call the American Hereford Association (AHA) customer service department to request the DNA kit. You will need the registration number of the steer in hand when you request the kit.

We now have the opportunity as exhibitors to identify DNA issues before we even arrive at the JNHE. Take time to understand the new rules for showing steers at the JNHE and be aware of the deadlines that are in place. This is a great way to protect yourself as an exhibitor prior to the show and I think the AHA and NJHA are to be commended for building upon the rules for the betterment of the breed. We encourage you to get your JNHE steers DNA tested prior to April 1 so that you can be ahead of the rush and meet the entry deadline of May 1 and June 1. We should all be extremely thankful to be involved with a breed that continues to make changes and improvements, so that our breed can flourish. We look forward to seeing these new steer rules put to work this year as everyone gets their steers registered, and most importantly look forward to a fantastic show in Madison. ◀

Note: see page 14 for the American Hereford Association Rules and Regulations Amendment to Rule 4 of Section VII.



In the Sponsor Spotlight: Crystal Blin

by Brooke Jensen

Crystal Blin is an inspiring and successful young woman in agriculture. Crystal is a prime example of one of the many, amazing leaders who have grown up in the livestock industry. She has dedicated much of her life to cattle and youth activities. Such as raising awareness about agriculture through social media, operating her own Hereford herd with her husband Jon Blin, and working for BioZyme Inc. as the director of marketing. Crystal was raised in Alberta, Canada, on a purebred Simmental operation, along with her parents and sister. Crystal was very active in 4-H and the Young Canadian Simmental Association. In fact, she and her sister were the first juniors to ever show black Simmental heifers at a Canadian National Junior Simmental Show. Like many of you reading this article, raising livestock has been in Crystal's family for generations, with both Herefords and Simmentals.

In 2003, Crystal attended Butler Community College in El Dorado, Kan., with a livestock judging scholarship. She then finished out her dual major of animal science and agricultural communications and journalism at Kansas State University. Crystal's first job out of college was working for the American Angus Association. Which was just the beginning of working so closely with several breed associations.

In 2006, she was the National Junior Hereford Association's (NJHA) junior activities intern. Crystal didn't grow up a part of

the Hereford association. However, she soon discovered how special our Hereford family is. As she mentions, she was quickly welcomed and that there is not a better group of people, than the Hereford family. Crystal worked with both Chris Stephens and Amy Cowan, she admired how well the staff always managed to fit everything together, while remaining calm, cool and collected. A few of the fondest memories of her internship were working with the young exhibitors at the Kansas state Hereford show and the amazing hospitality provided at the Texas state Hereford show. Before Bryden Barber and the Allan boys were old enough to show, she sat with them in the shavings and helped them fill out their judging cards. Another memory she cherishes from her time as a Hereford Intern was attending PRIDE in Mississippi, allowing her the opportunity to see cotton for the very first time. A proud moment during her time with the association was when one of her photos graced the cover of the *Hereford World*, an honor she will never forget.

The Hereford internship taught Crystal several points. Such as if you have an idea, present the plan on how the organization could use it, as companies are open to new ideas. She also mentions whether you are an intern or a full-time employee, showing up ready to work and sticking around till the job is done is important and never be afraid to ask how you can further help. She shared the

advice that the livestock industry is small and the impression you leave on people, as an exhibitor, junior board member or intern will stay with people for a long time.

It is very fulfilling seeing young leaders like Crystal work her way up in the titles of the industry. Crystal and her husband, Jon, run a small herd of Hereford cattle under the name of JJB Cattle Co. She said her Grandfather was very happy after she married Jon and they started into the Hereford breed, as he raised Herefords himself. Not only is Crystal a new Hereford breeder herself, she works with our association and our breeders on a daily basis. Crystal runs her own social media @CrystalCattle, where she has built relationships with both peers and industry professionals. She does an amazing job highlighting life on the farm and agricultural movements. Yet she advises to never forget face-to-face conversations are vital, and to be careful when posting on media about your peers and surroundings.

Crystal has been very successful in her career as the director of marketing for BioZyme, the makers of Sure Champ and VitaFerm. She oversees all the national marketing strategies, which consist of social media, national sponsorships, new product launches, print ads and more.

As many of you know, BioZyme is a huge reason the Junior National Hereford Expo (JNHE) is what it is today. They have sponsored and supported juniors for several continuous years now. Crystal mentions that she feels so grateful that she has the opportunity to be involved with the Hereford association again, not only as a new breeder, but also with BioZyme's commitment to Hereford youth. Crystal finds it very rewarding working with the youth at the eight different junior nationals that the BioZyme team covers. The dedication and passion this company and its employees uphold to the junior associations is second to none. We truly cannot thank them enough.

Crystal Blin is our sponsor in the spotlight for these numerous reasons. She is passionate about agriculture, youth and the Hereford breed. I am proud that the Hereford family welcomed such a wonderful leader into our industry back in 2006 as a Hereford intern. Crystal noted, "I am very grateful to all the people that gave me opportunities. It is one of my personal missions to help other young people reach their goals. Don't be afraid to share what you want to do with your life, your interest and your goals with the people around you. You never know how or when they will be able to help you." Watching Crystal's work with BioZyme, along with her dedication to promoting agriculture, and commitment to youth, I believe she is a great role model for many to look up to. Thank you Crystal, for all that you have done and will continue to do in the future of this industry. ◀

NEVER MISS A BEAT



1 **Sure Champ**

**A PROACTIVE APPROACH TO DIGESTIVE HEALTH
USE DAILY**

Sure Champ® is a top dress supplement that, when fed daily, strengthens growth and development. It's key ingredient, Amaferm®, acts as a prebiotic increasing digestibility to maximize the energy value of feed. With Sure Champ, your animal will utilize more of the nutrients in the feed they are consuming, gut health will improve and ultimately they will show increased appetite and overall performance.



2 **VitaCharge**
with the
Amaferm
advantage

**KEEP THEM EATING AND ON FEED
USE AS NEEDED**

Just like humans, animals are bound to have "off" days when they undergo stress. Help them through these times (hauling, changes in environment, during illness or recovery) by giving them the boost they need. Vita Charge® is recommended to keep animals eating and performing at their best. Vita Charge is available in many forms making application easy depending on what is best for your animal.

TO FIND A DEALER NEAR YOU, VISIT WWW.SURECHAMP.COM

BIOZYME
INCORPORATED

Spring 2016 / the advantage 7



by Kelsey Repenning

Before check in day and pulling your steer in line to be ultrasounded at the Junior National Hereford Expo (JNHE), let's take a closer look at ultrasound and what we hope exhibitors may take away from the process. In addition to the live steer show, and in order to add a real world application to the event, we also have an ultrasound carcass contest in which ultrasound measurements are collected on each steer, including ribeye area, backfat thickness and marbling score. From the data a yield grade and carcass weight are estimated, ranking the entries and awarding champion and reserve carcass steers.

How does ultrasound work?

Ultrasound uses high frequency sound waves to "see" under the steer's hide. Once the probe is placed snugly on the steer's back, sound waves go through the hide and reflect off of the fat and muscle layers. As the sound waves bounce back, an image is created on the ultrasound machine monitor, which allows measurement of various carcass traits. It is harmless to both the steer and the technician.

What measurements are taken?

Ribeye Area — The size of the large muscle known as the longissimus dorsi. This measurement is expressed in square inches and predicts how heavily muscled the steer is. Ribeye area contributes to the yield grade.

Intramuscular fat — Also known as marbling, %IMF is the dispersion of fat within the lean. Marbling is the primary factor in determining quality grade.

Backfat thickness — Taken between the 12th and the 13th rib, backfat is an external measurement calculated in inches. Backfat is an important factor in calculating the yield grade. Lower amounts of backfat make for a more desirable yield grade.

Certified Hereford Beef specifications

As Hereford producers, we are raising beef that has the option of being marketed through the Certified Hereford Beef (CHB) program and one day will land on the consumer's table. CHB's mission is to increase cattle value and create demand for the Hereford breed through a specification-based, branded beef program that produces, consistent, high quality beef. In order to qualify for CHB and how it relates to ultrasound measurements, please note the following carcass specifications:

- USDA Select or Higher Marbling
- "A" maturity only
- Medium or fine textured marbling
- 10-16 square inch ribeye area
- 600-1,000 lb. hot carcass weight
- Moderately thick or thicker muscling

- Less than 2" hump
- No dark cutter
- No capillary rupture

What is a Quality Grade?

Quality grade is a composite evaluation of factors that affect palatability of meat including tenderness, juiciness and flavor. These factors include carcass maturity, firmness, texture, color of lean and most importantly, the amount of marbling. CHB has two graded programs, which consist of USDA Choice and USDA Select beef and currently work with two packing companies, Greater Omaha and National Beef. Quality grade is the name of the game with consumer satisfaction, typically the greater amount of marbling, the higher the number of consumers satisfied.

How is Yield Grade determined?

Four factors determine the yield grade of a carcass: rib fat between the 12th and 13th rib, ribeye area, carcass weight and internal fat. Take a look at last year's top 10 carcass steers in Grand Island to see how they ranked and set a goal as to how you will measure up in Madison. We look forward to seeing you in the ultrasound line at the JNHE and wish you the best of luck as you continue feeding out your steers and preparing for the show. ◀

2015 JNHE official carcass steer results

Placing	Owner(s)	City, State	ID	Live Weight	Fat Thickness	Ribeye Area	IMF %	Carcass Weight	Yield Grade	Final Score
1	Waylon Lee	Wellington, Ill.	173	1,258 lb.	0.41	14.1	04.46	780.0 lb.	2.67	127
2	Drew Weymouth	New Carlisle, Ohio	170	1,214 lb.	0.68	15.3	04.39	752.7 lb.	2.87	157
3	Jason Baust	Rocky Ridge, Md.	152	1,306 lb.	0.55	14.5	04.10	809.7 lb.	3.02	182
4	Kyle Longcore	Cedar Springs, Mich.	202	1,202 lb.	0.47	13.3	04.52	745.2 lb.	2.96	186
5	Melinda Braun	Columbia, Ill.	174	1,222 lb.	0.61	14.3	04.45	757.6 lb.	3.04	204
6	Jasmine and Abby Dyer	Crawford, Neb.	99	1,232 lb.	0.51	13.5	05.71	763.8 lb.	3.04	214
7	Levi Farr	Moorefield, Neb.	106	1,226 lb.	0.56	13.8	04.16	760.1 lb.	3.09	219
8	Kaylie Shelton	Frederick, Md.	127	1,238 lb.	0.38	14.0	03.39	767.6 lb.	2.59	219
9	Jhett and Braden West	Sheridan, Wyo.	88	1,258 lb.	0.39	13.9	03.30	780.0 lb.	2.69	229
10	Brooke Hinojosa-Sidwell	Carr, Colo.	71	1,178 lb.	0.49	12.8	04.52	730.4 lb.	3.12	232

Where are They? Now

by Tommie Lynne Mead

Roger Morgan was a proud director on the National Junior Hereford Association (NJHA) board from 2006-2009. While serving, Roger held the positions of chairman as well as vice-chairman.

"Being on the board itself was one of my proudest childhood moments. I had constantly looked up to the national board from early on when my parents, Ronny and Kay, were national advisors in the early '90s. I got to see a lot while on the board with being a part of PRIDE convention in Washington D.C., to the transition of youth advisors — Chris Stephens to Amy Cowan, both amazing advisors and mentors," explained Roger. "The NJHA gave me many great friends, moments and accomplishments. Reflecting back I wouldn't change a single "embarrassing" walk through the cattle barn in a suit to do a scholarship interview, or an early morning to ready the reserve champion steer."

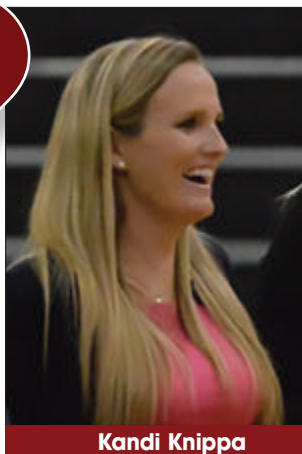
Roger told me that the greatest moment of his time on the board was mid-week at the 2007 Junior National Hereford Expo (JNHE) in Denver, Colo. A mother of young kids came up to him to thank the board members for being such good role models for the youth of our breed. "You guys are always there to lend a helping hand, no matter the job. You teach our kids that every job is worth doing your best on."

He also really enjoyed working as a ring man during the shows. "Helping kids when their stress level was high and their cattle weren't working their best gave him an opportunity to quietly help make situations better for them," he said.

Today Roger works as an area sales manager and consulting nutritionist for Peet's Feed, a division of BioZyme Inc. "Working for Peet's I get to help local operations with nutrition and discuss livestock every day.

It is truly a dream job. I live in O'Neill, Neb. This makes it possible for me to work for Peet's as well as go to the family ranch in Burwell, Neb., when needed," said Roger.

Roger Morgan is still very involved with Morgan Ranch and has started a herd of purebred Herefords with his siblings under Morgan Cattle Partners LLC. Carrie, John, Patrick, their spouses and Roger



Kandi Knippa



Roger Morgan



Hannah Wine

started Morgan Cattle Partners as a way to continue to grow and expand their purebred Hereford operation. They focus on breeding show and seedstock utilizing embryo transfer technology and a sound female base that their parents helped them with as kids, growing up in the Nebraska Junior Hereford Association and the NJHA. They had their first Internet female sale in November and are excited to continue to raise high quality Herefords.

Hannah Wine served on the NJHA board of directors from 2007-2010. During Hannah's time on the board she served as the leadership committee chairman.

For three years during Hannah's term she represented the NJHA board at the Western Regional and Idaho State shows at Split Butte. Hannah explained that hosts, Ken and Paula Tracy, and the entire western region, most of whom she had never met before, welcomed her like family. She thought that it was a fantastic chance to get to meet lots of kids that didn't regularly make the trek to the JNHE. Hannah learned about how they raised Hereford cattle in an entirely different environment and got to tell them about how she raised Herefords on the east coast.

"Year after year, it was a fun-filled week of judging peewee public speaking contests, playing volleyball in the barn, meeting more great Hereford families and eventually heading back east with a huge box of Idaho Spud candy bars and the prized Stimpson Family caramel popcorn recipe," Hannah explained. "Those weeks were some of my favorite as a board member, but the greatest feeling of accomplishment came for me when so many of the Idaho and Northwestern juniors came for the 2010 PRIDE in Boise. It was a great privilege to introduce the Idaho juniors I had gotten to know over the years to the other juniors from around the U.S. and see them form new friendships with fellow Hereford juniors."

Shortly after finishing up on the NJHA board, Hannah took a job in Montana as the

Director of Youth, Media and National Shows for the American Simmental Association. After five years with Simmental, she has just taken a new position as the Executive Director of the United Braford Breeders Association in Texas.

Kandi Knippa served as our NJHA secretary as well as chairman from 2007-2010.

"I think as a board our greatest accomplishment was representing the Hereford breed to the best of our ability and always keeping the interests of the juniors first. We were constantly looking to keep the guidance of our breed leaders in mind while making the tough decisions that came with every meeting and conference call," explained Kandi. "I was elected to the board to serve with all types of leaders who were equally as passionate about the breed and our association."

When it came time to look at how Kandi and the directors she served with could better serve the juniors to their fullest potential, they put their heads together to rework the bylaws. They came up with a chairman, vice chairman and four committees that were much more specific in their job descriptions than the previous titles. This allowed for each junior director to take more responsibility for communicating with the members and implementing a high standard of leadership for the juniors to be capable of obtaining throughout all of our activities during the year.

Kandi could not choose just one favorite moment to tell me about, probably due to the fact that she served with some pretty hilarious people that kept everything they did highly entertaining, as she explained.

Today Kandi is a teacher and coach in Seguin, Texas. She teaches freshmen biology and is the volleyball and track coach at Seguin High School. Kandi is also recently engaged to Mike Helle and they are getting married in July. Congratulations Kandi. ◀



A Few Tips from Your Junior Board

by Mason Blinson

What is your favorite contest at the Junior National Hereford Expo (JNHE)?

Brooke - Hereford quiz bowl. It's a great event to learn about the history of the Hereford breed and the bovine specie.

Austin - Extemporaneous speech

Amanda - Quiz bowl. It is so much fun to learn facts about the breed and industry and it's such a rush to be on the line in front of everyone waiting to be the first to buzz in and answer correctly.

Jessica - Livestock judging. Not only do I love the contest itself, but it shows the competitive side of all ages.

Cody - Team fitting. Preparing cattle for a show takes a lot of work before hand. This contest is a great way to display all of your hard work.

Tommie Lynne - Extemporaneous speech. It's a different and really an amazing way to teach our juniors something they may not know and how to advocate for it.

Steven - Great American CHB® Grill-off. Who doesn't love food, especially Hereford beef?

Kelsey S - Before I was on the board, I would have told you team fitting, but since being on the board, it's the quiz bowl. I usually like to work this contest and it has become a favorite of mine. I really enjoy the buzzer rounds with the younger groups. Some of the answers that they come up with blow my mind and are quite entertaining.

Taryn - Showmanship. It's a contest that almost every junior participants in and it's awesome to be a part of one of the largest showmanship contests.

Kelsey R - Hands down, Hereford bowl.

Bailey - Individual and team sales. I think it is extremely important for the youth to be able to get up and talk to people and sell their animals or products.

Mason - Extemporaneous speech. This contest teaches so many skills and is a great way to get juniors involved, while also providing an abundance of information.

What piece of advice would you give to a first year showman at the JNHE?

Brooke - Keep smiling and working hard. Do not get discouraged; be proud of what you

accomplished. Also, it's really important to make the most of the JNHE, get involved and make new friends from across the country.

Austin - Meet as many new people as you can.

Amanda - Take advantage of EVERYTHING that is offered at the JNHE from contests to mingling events. You will make some of your best friends at the JNHE and will learn some extremely valuable skills in the contests.

Jessica - Junior nationals is one of the best weeks of the year and one to look forward to. Try and do all the activities and experience all aspects of the week, go out and meet other kids from different states and have lots of fun.

Cody - Get involved in all of the contests that the JNHE has to offer, don't limit yourself to just showing. Meet as many people as you can, some of the best friends and resources can be made at the JNHE.

Tommie Lynne - Take every day one step at a time and make the best of them and definitely don't stress yourself out.

Steven - Don't worry or stress about the trip. It's the greatest week of the year, so relax and have fun.

Kelsey S - Although you probably don't realize it yet, this organization will have a greater impact on your life than I could ever explain. Your first JNHE can be a little overwhelming, but remember that no matter how you place in class, having fun is the most important part. Step out of your box and participate in as many contests that are offered. Meet as many people as you can, because some of my truest and best friends I've met at the JNHE.

Taryn - Meet three new people every day. Some of my best friends I met showing at the JNHE. These are friendships that will last a lifetime.

Kelsey R - Before my first show, my dad told me to smile no matter what; I think that holds true no matter your age.

Bailey - Always work hard, but have fun, the end of your show career might seem far away it's much closer than you think. Take time to slow down and enjoy what you are doing.

Mason - Get involved in the programs focused on first year exhibitors. The new-comer get together is a great way to break the ice and make friends.

What is your favorite memory from JNHE?

Brooke - I am sharing two. I was nine years old at my second JNHE and had a blast. I enjoyed racing down the big hill on carts with my cousins and asking other kids if they wanted to go to the hill with us. We lived on that cart all week. That's when I learned how special it is to build new relationships with other juniors. Also, in 2015 I was reserve champion senior showman. It was so rewarding, after years of working hard and focusing on my skills as a showman, I was finally rewarded, and it was the greatest feeling ever.

Austin - It is one that I will never will forget. My first junior nationals I was in the ring with a heifer and my show stick got caught in the heifer's tail in front of me and the heifer drug my show stick.

Amanda - I don't think I can pick just one, the JNHE has served as my summer vacation for twenty-three years, so basically I have a lifetime of favorite memories from the JNHE that I will cherish for the rest of my life.

Jessica - From all my years at junior nationals there are two memories that stand out. First is 2011, my success in the showing with both the steer and heifer show will never be forgotten. My second favorite memory would have to be the year I got on the board, there is nothing more rewarding than putting on that maroon coat for the first time.

Cody - Being awarded grand champion bull was one of the biggest honors and greatest memories I have from the 2012 JNHE. Being selected champion was a Huge Honor, but the fact that he was a bred and owned made it mean so much more to my family and I.

Tommie Lynne - I'm not sure if I could narrow it down to just one. I met some of my very best friends at JNHE and built the strongest relationship I have by showing cattle there. That relationship is with my dad. The JNHE was the biggest thing we had and it was always our thing. We had people come with

Steven Green



Kelsey Stimpson



Taryn Adcock



Kelsey Repenning



Bailey McKay



Mason Blinson



us over the years, but nothing would have been possible or as fun without my dad.

Steven – The moment I walked my heifer in the ring at my first ever junior nationals in Indianapolis, Ind.

Kelsey S – 2014 was a pretty spectacular JNHE for me. I was fortunate enough to place really well in the breeding show with my heifers and also placed in the top 10 in intermediate showmanship. Although the highlight of the week was receiving a maroon jacket from Courtney Tribble, getting on the board was a dream of mine ever since I was a little girl and to this day sometimes it still doesn't seem real.

Taryn – I have three. Receiving my board jacket from my older sister, winning reserve champion intermediate showman in 2009 and my family exhibiting the reserve grand champion female in 2008.

Kelsey R – I loved traveling to Pennsylvania in 2014. Not only did I get to see a part of the country I had never been to, but I also came home with a maroon jacket after running twice for the board.

Bailey – The honor of being selected as 3rd overall intermediate showman at the 2013 JNHE. I had come back to the level of showmanship that I had been at before I broke my arm seven years ago. But, I really just love being at the JNHE with all of the future Hereford breeders.

Mason – I would have to say being a delegate from my state to vote for the new directors of the NJHA. I was lucky enough to be able to represent my state for several years and I was able to meet so many people and really get to know the members of the NJHA.

Give families a tip on how to prepare for JNHE?

Brooke – ENJOY the week. Sometimes everyone gets so stressed and tired throughout the week of JNHE and the days preparing beforehand. Don't forget to sit back and remember the reason you are actually there and be thankful.

Austin – Ask other people who have been before on what to expect and what to bring, and any advice they have.

Amanda – Coordinating and working with others in your state is extremely beneficial to help prepare for contests and all of the other events that happen throughout the week of the JNHE. It makes the week go much smoother when your state association is

organized and you have your state members supporting each other.

Jessica – Stay organized and never be afraid to take more than you need. A week is sometimes longer than those expect, especially to a cow show. So always know what to pack and how to pack it, so you will be ready for the days to come.

Cody – Double check the showbox and trailer so you don't have to buy new stuff.

Tommie Lynne – Always over pack, it seems silly, but there has never been a junior national that I didn't wish I had kept the extra socks and three random outfits in my overstuffed suitcase. And never be afraid to ask for help. Nationals is a huge event and it can be tough to prepare for, but everyone is willing to lend a helping hand.

Steven – Make sure to pack a spare tire and the four way. No tire is invincible.

Kelsey S – Sleep your little heart out as much as you can before the JNHE, but you and I both know that never happens.

Taryn – Don't be afraid to ask questions. More experienced families are generally glad to help new families figure out the ropes of JNHE. Older junior members, their parents and state advisors are great resources.

Kelsey R – Be sure to try as many contests as you can and prepare to meet tons of new friends.

Bailey – Make a list and check it twice and then check it again. Be thorough, don't just say showbox or suitcase, say three skip tooth combs or eight pairs of jeans.

Mason – Practice makes perfect. The quality of cattle is impeccable at the JNHE. In order to be successful, you have to put in the work at home.

What is your favorite part about being on the board?

Brooke – Definitely giving back to the juniors. I remember at my second JNHE speed/ice skating with the junior board members. It was a blast and throughout the week a few of the directors took time to personally talk to me and encourage me in and outside the ring. I want to make that same impact on juniors. I want to allow the juniors to enjoy themselves, depend on me for help and guidance and most importantly, feel the desire to be a young leader in the livestock industry themselves.

Austin – Helping the young juniors and seeing the smile on their face while showing or in a contest.

Amanda – Serving the junior members and giving them a chance to gain the opportunities and experiences that I gained growing up in the NJHA.

Jessica – From touring different operations across the nation, to meeting different members and kids, these are the memories we will hold forever. But, in the end it's being the role models for those who look up to us that is the best part about wearing that maroon coat.

Cody – Getting to work contests and shows and seeing the big smiles on the juniors faces after seeing their hard work pay off.

Tommie Lynne – Meeting so many families and friends while being on the board has been my favorite. It's remarkable how many unique and amazing people we have in our industry.

Steven – For me it's working the ring. It is an awesome experience to be right there with the cattle as they are sorted.

Kelsey S – Getting the opportunity to be able to give back and serve as a leader for the association that has had such a large impact on my life. We are so lucky to be a part of one of the best junior associations in the country and I am beyond blessed to be able to make an impact on it. This association and past board of directors has made such a difference in my life and I hope I'm able to be an example to younger members, just like past board members were for me.

Taryn – The people. Getting to travel the country and meet some of the greatest people in the industry is something that I am very thankful for.

Kelsey R – I love being able to give back to the association and having a part in guiding tomorrow's industry leaders.

Bailey – I love that we have our own little family on the board.

Mason – Traveling around the country and seeing all of the amazing Hereford cattle and being able to work in the showing and seeing firsthand the excited and anxious juniors.

From all of us on the board we can assure you that the 2016 JNHE is going to be one of the best yet and prepare for the time of your life. Being in a great location in Wisconsin and having great facilities will make it one to remember. We are all so excited to see everyone there. ◀

An Exclusive Interview with Luke Bolin

by Kelsey Stimpson



the pulse. the latest stock show news.



Please share a little bit about your background in the livestock industry.

I grew up in a small town in Northern Arkansas and began showing Shorthorn cattle when I was 15 years old. My family and I hit the show road and didn't leave it. From hundreds of jackpot shows all the way to the majors, we did it as a family. In 2011, I became the first person from the state of Arkansas to be elected to the American Junior Shorthorn Association board of directors, which became the starting point of my career in the stock show industry.

You served on the American Junior Shorthorn Association board of directors, what were some of the most useful things you learned while serving?

I think being on the junior board teaches different things to different people. For me it taught me how powerful a group of young people can be to effect change in the lives of others. While you are a junior you view current and past junior board members as a kind of "breed celebrity", and when you get elected you feel the full weight of that. You strive to be a better person for the juniors and breed you are serving. Kids emulate you and your actions in and out of the red jacket and you hope to serve in the best capacity you can.

While being a part of the junior board, what was your favorite event or activity that you took part in?

By far my favorite part of being on the junior board was junior national. Sure we were run ragged the entire week, but getting a chance to interact with the junior members was awesome. You get to learn their stories and watch their love for the breed grow alongside their skills and confidence.

You also served as an intern for the National Junior Hereford Association (NJHA), what inspired you to apply for this position?

Coming from the Shorthorn breed, I always had a huge amount of admiration and respect for the American Hereford Association (AHA). When the opportunity came up to serve as an ambassador, I jumped on it and it was an awesome experience that laid the groundwork for

my internship. That next summer I was lucky enough to be selected as the intern, and that is something I am still very thankful for every day.

How did working for the NJHA help you get to where you are now?

My internship with the AHA helped me in a million and one ways. Not only did it play a big role in helping me get my current job with Sullivan Supply, but also I use the connections and friendships that I made almost every day. It is always nice to see a familiar Hereford face in the barns at shows across the country.

What sparked your interest in working for Sullivan Supply?

Honestly, working for Sullivan Supply wasn't even on my radar when it came time to look for a job. I was always a huge Sullivan Supply fan, having exclusively used their products and being a recipient of the Sullivan Supply/Stock Show University scholarship. So when John Sullivan, Founder of Sullivan Supply, approached me about working for his company, it was one of the most humbling and exciting days of my life.

What is the favorite part of your job?

With The Pulse, you never know what to expect when you wake up in the morning, and I really like that no two days are alike. Traveling to all the different shows and getting to meet all kinds of people is another thing I love about my job. Describing my job as fast-paced in an understatement. At times it can get a little exhausting, but it is addictive and I don't know how I would function at a slower pace.

On a busy show day, where can we find you?

On a busy show day I am usually camped out ringside with my crew, camera and computer in tow, or running through the barn trying to capture the stock show experience.

What is the most rewarding part of your job?

The most rewarding part of my job is seeing peoples face light up with they see their picture on The Pulse and hearing how much people enjoy staying up-to-date with all the stock show news.

The Pulse has become a big part of major shows all throughout the country, where did Sullivan Supply get the idea for this project?

John Sullivan had an idea to create a site that everyone could go to for the latest in stock show news and show results and from there The Pulse was born. It has morphed into kind of a Facebook page for the entire show cattle industry. There is a constant stream of news, information, show results and fun photos.

Sullivan Supply plays a huge part in sponsoring the JNHE. What are some of the ways that Sullivan gives back to youth livestock events?

Sullivan Supply is a stock show family owned and operated business that truly believes that young people are the future of the livestock industry. Our founders, John and Dede Sullivan, make it a major priority to support the youth, from the distinguished Sullivan Supply/Stock Show University Scholarship Program to junior national sponsorships and the Stock Show University program, they are all in. I was recently interviewing John for a project we were working on and he said that he credited all of the Sullivan Supply customers and their great support with being able to support the stock show youth like he does.

Who is your role model?

This is a tough question. I did the totally cliché thing and looked up role model in the dictionary and it says that a role model is a person whose behavior, example, or success is or can be emulated by others. So that got me thinking about all the role models I have had over the years: my parents, bosses, junior leaders, friends and even people I don't know, but strive to be more like. I realized that most, if not all of my role models, have been connected to the stock show industry and that each one of them helps me to become a better person and to accomplish my goals.

I would like to say a special thank you to Amy and Bailey and the entire staff at AHA for all their support over the years. The Hereford people will always hold a special place in my heart! ◀



Sullivan's
1st Clipper Caddy™

- Lightweight clipper caddy designed to hold a variety of clippers in a tough and durable aluminum box.
- Available in a scratch resistant black or copper hammer tone powder coat.

NEW PRODUCTS



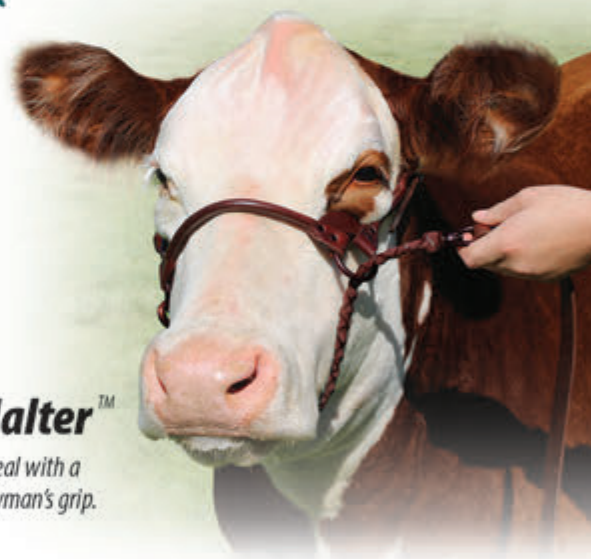
Sullivan's
SHOCK™

- For Clipping and Fitting....this is the BEST hair product we have ever used.
- Legit hair pop and shine without the oil and residue.



Sullivan's
Total Grip Show Stick™

- Sleek design that is great for any showman serious about their look but wanting something with more edge.



Sullivan's
1st Class Show Halter™

- Elegant and Flawless eye appeal with a new patented texturized showman's grip.

Proud Sponsor of the Junior National Hereford Expo



www.sullivansupply.com

SULLIVAN SUPPLY INC.
Order Line: 1-800-475-5902 - Dunlap, Iowa - sales@sullivansupply.com
SULLIVAN SUPPLY, SOUTH
Order Line: 1-800-588-7096 - Hillsboro, Texas - sullivan@hillsboro.net
SULLIVAN SUPPLY, WEST
Order Line: 1-888-914-5972 - Lodi, California - lee@sullivansupply.com



American Hereford Association Rules and Regulations

Amendment to Rule 4 of Section VII

January, 2016

Rule 4. ALL ANIMALS:

A. The Association may require that any animal which has been registered by the Association be subjected to a DNA profile test to verify breed purity and accuracy of the recorded parentage.

The Executive Committee of the Board of Directors or the Board of Directors or the Executive Vice President may require that a DNA profile be made, by such agencies as it or he may designate, of any Hereford animal which has been alleged to have been incorrectly recorded or for any animal for which tissue analysis is deemed advisable.

It shall be the duty of the owner or owners of record of any animal in question and the owner or owners of record of the purported sire and dam to afford the Association or its representatives reasonable opportunity to secure DNA samples from the animals involved in the investigation.

The Executive Committee of the Board of Directors is empowered to

determine who shall pay the costs of any investigation, including laboratory fees assessed under the provisions of this rule.

B. Prior to the filing of an entry application for any animal with respect to which a DNA profile is not on file with the Association, the Association may require the owner of said animal, at the owner's cost, to provide a DNA sample for such animal to the Association's designated laboratory, and to provide a DNA profile to the Association from the Association's designated laboratory.

At any Hereford competition, the owner of any animal that wins such competition shall, promptly after the announcement that such animal has won such competition, permit the Association to secure a DNA sample from such animal.

C. If, at any time, the Association is in possession of two (2) or more DNA profiles allegedly from the same animal that do not match, including the winner

in any Hereford competition, the Board of Directors or the Executive Committee may require the Executive Vice President to undertake such investigation as the Board of Directors or the Executive Committee deems appropriate, and, upon the conclusion of such investigation, the Board of Directors or the Executive Committee may take such actions and impose such sanctions as it deems appropriate as provided in Article XI of the Bylaws, including without limitation, the forfeiture of any prizes, including any monetary awards, or ribbons awarded to such animal at such competition, the suspension of the registration of the animal in question, the suspension of the owner's membership, or the revocation of the owner's membership.

Any such investigation may include requiring any owner to permit the Association to secure another DNA sample from such animal. ◀

A Few Moments with Shane Bedwell

Meet the AHA Chief Operating Officer and Director of Breed Improvement.

by Taryn Adcock



Tell us about your childhood?

I grew up in Medicine Lodge, Kan., on a diversified ranch. My family has been in the cattle business for four generations. Growing up, my grandad ran the sale barn in Medicine Lodge and a small backgrounding yard. Since then, my dad and I have developed a commercial cow herd comprised of Hereford, Angus and Red Angus as well as running stocker cattle on wheat pasture.

I was very active in FFA and sports in high school, but actually didn't grow up showing cattle. It wasn't until my freshman year in college, because of my roommate (John McCurry), that I showed in my last summer of eligibility. So without any prior showing experience, I traveled that summer showing two senior heifer calves. I was fortunate enough to stand at the top of my class at Angus Junior Nationals. But more importantly, I was able to compete in many of the contests and interact with hundreds of youth from across the U.S. Because of this I plan on affording my kids this same opportunity beginning in their very first year of eligibility.

What colleges did you attend?

Butler County Community College – Associates of Science

Kansas State University – Bachelors of Science in Animal Science and Industry

University of Illinois – Masters of Science in Beef Cattle Nutrition.

Why did you choose to major in animal science?

I chose the animal science field as that is and was my passion. Initially, I had aspirations to be a large animal veterinarian, but I soon found my passion for livestock evaluation. I knew I wanted to be a professor because of the exceptional mentorship I had throughout my collegiate career.

How did you get to where you are today in your career?

If not for the positive influence of my mentors during my collegiate experience, I wouldn't be in the position that I'm in now. As well I owe a lot of my success to my parents. They

instilled the foundation of my core values and taught me that hard work does pay off.

What does a day in the office look like for you?

A day in the office can range from a commercial man wanting to use Hereford bulls for the first time to a purebred breeder wanting to discuss EPD's. Also I work closely with some of the top scientists in academia to insure the methodology behind our genetic evaluation system is correct. So far every day is little different and I like it!

Do you have any advice for juniors?

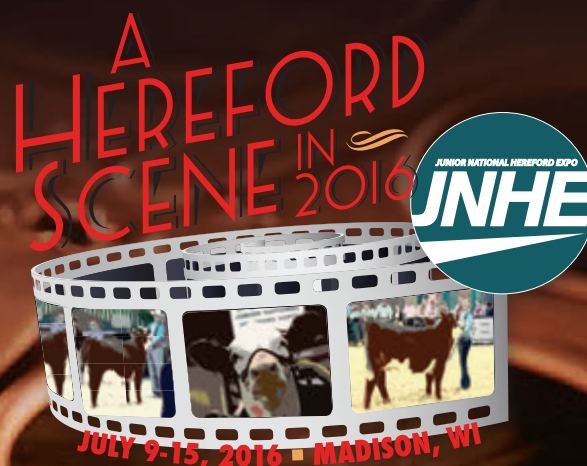
Doing things right and keeping a high moral character will pay off in the long run, regardless of how popular the decision is at the time.

Welcome Shane

We are excited to have Shane on board with team Hereford, please make sure you stop him and welcome him to the Hereford family in Wisconsin for "A Hereford Scene in 2016." ◀

2016 VitaFerm Junior National Hereford Expo

Plan to attend "A Hereford Scene in 2016" in Madison, Wis., July 9-15



Friday, July 8

7 p.m. Barns open for setting up stalls — cattle may arrive into tie outs

Saturday, July 9

6:30 a.m. National Hereford Women (NHW) board meeting
 8 a.m. Cattle allowed in barns
 8 a.m. Scholarship judges' breakfast, *Exhibition Hall*
 8 a.m. NJHA director candidate interviews, *Exhibition Hall*
 8 a.m.-5 p.m. People registration in show office — pick up goodie bags and exhibitor packets, *Pavilion #1*
 9 a.m. Scholarship interviews begin, *Exhibition Hall*
 Noon-6 p.m. Cattle check-in — all cattle in barns by 5 p.m. and checked in by 6 p.m.
 1 p.m. Newcomer orientation
 3-4 p.m. Sassy Cow Ice cream social, *Pavilion #1*
 6 p.m. Contest sign ups due to show office
 7 p.m. Director candidate roundtable dinner, *Exhibition Hall*

Sunday, July 10

8 a.m. Hereford bowl written test, *Exhibition Hall*
 9 a.m. Individual and team sales, *Exhibition Hall*
 11 a.m. Great American CHB® Grill-off
 1 p.m. Illustrated speech, *Exhibition Hall*
 1 p.m. NHW Queen's Tea, state queens forum to follow, *Exhibition Hall*
 4 p.m. State group pictures, *Coliseum*
 5 p.m. Opening ceremonies, *Coliseum*
 6:30 p.m. A Hereford Scene Block Party — Celebrate Wisconsin brat feed, band and junior mixer, *parking lot to the north of Pavilion #1*

Monday, July 11

7-9 a.m. Pancake breakfast, *Exhibition Hall*
 8 a.m. Judging contest, *Coliseum*
 8:30 a.m. HYFA golf tournament, *Door Creek Golf Course*
 9-11:30 a.m. Group painting, *Exhibition Hall*
 11 a.m. Sure Champ nutritional clinic, *Coliseum*
 11 a.m. Extemporaneous speech contest (first preparation starts at 10:30 a.m.), *Exhibition Hall*
 Noon Hereford bowl final "buzzer" round (top teams compete), *Exhibition Hall*
 1-3:30 p.m. Group painting, *Exhibition Hall*
 2 p.m. NHW annual meeting, *Exhibition Hall*
 2 p.m. Sullivan Supply/Stock Show University fitting demonstration, *Coliseum*
 4 p.m. Sullivan Supply/Stock Show University team fitting contest, *Coliseum*
 5 p.m. Judging of group classes
 6 p.m. Queen's orientation, *Exhibition Hall*
 7 p.m. NJHA membership meeting — election of board members, *Exhibition Hall*

Tuesday, July 12

8 a.m. Sullivan Supply/Stock Show University national showmanship contest, *Coliseum*
 Ring 1: senior, intermediate and senior finals
 Ring 2: junior and peewee followed by pre-peewee
 11 a.m.-1 p.m. Lunch, *Exhibition Hall*

Wednesday, July 13

8 a.m. Ring 1: Cow-calf pairs, bred-and-owned heifers
 Ring 2: Steers, bred-and-owned bulls
 11 a.m.-1 p.m. Lunch, *Exhibition Hall*
 5-7 p.m. Awards night CHB steak dinner, *Exhibition Hall*
 7 p.m. Awards night, *Coliseum*

Thursday, July 14

8 a.m. Begin owned heifer show, *Coliseum*
 11 a.m.-1 p.m. Lunch, *Exhibition Hall*

Friday, July 15

8 a.m. Resume owned heifer show, *Coliseum*

Hospitality will be open
 Monday-Friday

10 a.m. - Noon and
 2-4 p.m. in Pavilion #1



Greetings Fellow Junior Hereford Members

On behalf of the Wisconsin Junior Hereford Association, I would like to invite each of you to the 2016 Junior National Hereford Expo (JNHE) in Madison, Wis. We are so excited to host this wonderful family event and can't wait for you to enjoy our state and the fun activities we are planning. Of course we have a couple new events up our sleeves! Starting with the opening ceremonies on Sunday, there will be an opportunity to make new friends from other states with a social mixer where you can exchange complimentary state pins with other exhibitors. This mixer will be similar to what the Olympic athletes do upon arrival with Olympians from other countries. You will be trading your state pins for other state pins, while meeting new friends. Don't forget to bring your cell phones and a selfie stick. Why you ask? It's a surprise, we'll tell you when you get here. Following opening ceremonies we will host a Celebrate Wisconsin Brat Feed, all

highlighted by the best country and western band in Wisconsin – "Madison County".

I know there may be some grumbles when you find out three on three basketball has been cancelled, (oops, I hope you knew that already) but we have a new event that is sure to be even more fun, and guarantees no one will get hurt. You can trade in your basketball shoes and your headband for a paintbrush and an imagination. Our painting event is sure to make everyone happy and you will definitely have a good time showing off your one of a kind artwork walking through the barn. This painting event isn't just for the juniors, it's for boys and girls, moms and dads, grandmas and grandpas, anyone can sign up to join us.

The painting party is on Monday and you may choose between a morning or an afternoon session.

While you are in Madison I hope you are able to enjoy a few of our local attractions

too. Very close to the Alliant Energy Center is our zoo. It's always nice to get away from the barn for a couple hours and the zoo is perfect for that, plus the price is right – FREE. There will be several other suggestions of family activities to do while in Madison that will be in the JNHE welcome bag.

Our juniors and advisors have put a lot of work into making this the most memorable junior nationals ever, so we are super excited to include everyone in on the fun. More surprises and activities are still in the making, but you can expect nothing less than marvelous. Further information and details will be sent out to the state advisors regarding our extravagant events, so stay tuned.

We look forward to welcoming you and your family to Wisconsin.

Briana Katzenberger
Wisconsin Junior Hereford
Association President



JNHE Judges

Bred-and-owned heifers and cow-calf pairs

Todd Herman, Lima, Ohio

Owned heifers

Lydell Meier, Clinton, Tenn.

Bred-and-Owned Bulls and steers

Tyler Winegardner, Harrod, Ohio

Peewee and junior showmanship

Amanda Schnoor, Modesto, Calif., and
Kirbie Schnoor, Ft. Worth, Texas

Senior and intermediate showmanship

Luke and Stacy Lemenager, Hudson, Ill. ◀



JNHE Contest and Scholarship Updates

Advisor of the Year Award

This award recognizes one of the most important groups of people contributing to the success of the state associations and ultimately the success of the National Junior Hereford Association (NJHA). Each state junior Hereford association is encouraged to nominate its advisor(s).

Ed Bible Memorial Scholarship

A NHW-sponsored college scholarship honoring Ed Bible. Ed served as director of the American Polled Hereford Association's (APHA) communication program and later vice president, communication director and editor of the *Hereford World* when the APHA and American Hereford Association (AHA) merged. He was a leader of both the National Agri-Marketing Association and the Livestock Publications Council. Ed Bible died in 1998.

Extemporaneous Speech Contest

This contest is designed to develop the ability of all NJHA members to express themselves on a given subject without having prepared or rehearsed their speeches in advance; therefore, NJHA members must formulate their remarks for

presentation in a very limited time, which is 3-7 minutes in length. Two divisions: intermediate (14-17) and senior (18-21) as of Jan. 1.

Future Cattleman Scholarship

A Hereford Youth Foundation of America (HYFA) sponsored scholarship is given to one recipient who has made an outstanding contribution to the Hereford industry. Applicant must be an active NJHA member and 18 years of age on Jan. 1 current year.

Golden Bull Achievement Award

A bronze bull model from the AHA and the NJHA and a cash stipend from the HYFA and the NHW are awarded to one junior member, 18 years of age as of Jan. 1.

Golden Pitchfork Award

This award will be presented to one state association during the Junior National Hereford Expo (JNHE). The Golden Pitchfork Award was developed to encourage junior exhibitors to work together in the display of their cattle, as well as to create state pride during the JNHE. It is presented to a state association that displays a combination

of cleanliness, uniformity in stalling (such as exhibitor cards, panels, etc.) and additional decoration of the area representing the state.

Great American CHB Grill-off

Hereford chefs of all ages should bring their imaginations, aprons, Certified Hereford Beef® (CHB) recipes and creativity for food preparation to the Great American CHB Grill-off this summer. CHB LLC co-sponsors the grill-off with the NHW. CHB LLC is excited to participate in this great event and is requiring that all contestants use CHB in their recipes. CHB LLC will provide approximately 2 lb. of meat per team. Each team will pick one of the following items:

- 85% Ground Beef
- Flat Iron
- Tri-Tip

Herdsmen of the Year Award

This award will be presented to one NJHA member during the JNHE. A nomination committee will observe exhibitors throughout the week and nominate individuals accordingly. The nominees' fellow exhibitors will make the final selection during a ballot vote.

Hereford Herdsman Scholarship

Sponsored by HYFA in cooperation with Hereford herdsman, the Hereford Herdsman Scholarship honors young men and women who take great pride in exhibiting and presenting their Hereford cattle at junior Hereford events.

Hereford Bowl

The primary objectives of the Hereford Bowl are to allow NJHA members to demonstrate their knowledge of Hereford cattle to show good sportsmanship and to provide an educational experience for both participants and spectators in a quiz bowl format.

Illustrated Speech Contest

Sponsored by the NHW in cooperation with the NJHA, the contest's objectives are to develop character and leadership in Hereford youth while stressing education to stimulate and promote interest in the beef industry and to project Herefords in a positive light. There is no specific topic; however, speeches must relate to the beef cattle industry. Monetary awards for the top three placings of the junior, intermediate and senior divisions.

Individual Sales Contest

A sister contest to team sales, individual sales allows an individual junior to do the selling. The goal of this contest is to give juniors a glimpse at a real life situation of selling an animal, semen, embryo packages or any agricultural related product. Animals are not allowed in this contest, however, participants may use visual aids and juniors will directly sell the product to a panel. Divisions: peewee, junior, intermediate and senior.

John Wayne Memorial Scholarship

The HYFA and the NHW award one college scholarship to an NJHA member who make outstanding contributions to agriculture and the Hereford industry. Not only was John Wayne (and is) an icon of Hollywood and of timeless movies, he was a Hereford breeder. He owned the 26 Bar Ranch and feedlot in Arizona. The NHW honors John Wayne and his patriotism, courage, integrity and talent by awarding this scholarship annually to an NJHA member.

Judging contest

Contestants can compete individually as peeweess, juniors, seniors or in the open division and will place four classes of cattle with questions on two of the classes. Awards will be given to the top three teams and high individuals in each division.

Junior Golden Bull Award

Junior Golden Bull awards will be presented during the JNHE. The award is a Junior Golden Bull bronze trophy and is sponsored by the NHW and the NJHA. This award recognizes younger members of the NJHA who are becoming active in Hereford activities and to begin resume-building for their future scholarship awards.

Junior Merit Award

Sponsored by American Livestock Inc., the Junior Merit Award is designed to recognize outstanding college-age junior members and to provide them with further higher-education opportunities. The award encourages individual and cooperative

effort, enthusiasm, excellence, leadership and achievement and singles out those who are promising Hereford breeders and beef industry members. American Livestock sponsors a Hereford trip to the top recipient.

NHW Heifer Award

The NHW Heifer Award is presented annually following the opening ceremonies. Every age-eligible NJHA member in attendance at the JNHE can enter the drawing during the group picture time that precedes the opening ceremonies. One junior receives a \$1,500 credit towards the purchase of a heifer from a participating Hereford breeder who graciously donates this credit. It must be used within one year of winning the credit.

Outstanding State Member

One junior member in each state with junior participants at the JNHE will receive this award. Awards are made in cooperation with state junior associations. Judging of individuals should be based on sportsmanship, cooperation with fellow participants/guests, attitude and work habits. Individual states will conduct their own counting of votes and relay the state winner's name to the NJHA board of directors on official ballots.

Peewee Speech Contest

Peewee speech is strictly a participation activity for NJHA members up to 9 years of age. The NHW, in cooperation with NJHA, are sponsors.

Photography Contest

Photographs should include Herefords or an activity related to Herefords. This contest is sponsored by the NJHA and *Hereford World* and offers several different categories for entries. Note there are new divisions this year, visit JrHereford.org for the updated rules.

Poll-ette Founders Scholarship

This scholarship honors the women who laid the foundation for the National Organization of Poll-ettes (NOP). One scholarship is awarded to an NJHA member to continue financing their educations.

Promotional Poster Contest

Poster contest will be offered only to peewee and junior competitors. Sponsored by the NJHA, this contest is intended to promote the 2016 JNHE in Madison, Wis.

Prospect Award

The NHW and the NJHA sponsor this award. One Prospect Award for each grade, levels 3-8, will be presented at the JNHE. This is an introduction of learning to apply for awards and is designed to encourage all NJHA members to start building experiences and to record them.

Sullivan Supply/Stock Show University Showmanship Contest

Contestants are judged on appearance and showmanship ability except for the final round of the senior division, where animal grooming is also evaluated. Divisions are pre-peewee, peewee, junior, intermediate and senior. Youth do not have to show their own animal except for peeweess, who must show their own or one owned by an immediate family member. The animals exhibited

in the contest must be entered in the JNHE. There is a \$5 entry fee and all contestants must pre-enter by June 1. Pre-peewee contestants must be 5-7 years old.

Sullivan Supply/Stock Show University Team Fitting Contest

All contestants must be members of the NJHA as well as members of the state junior association they are representing. The three-member teams should be made up of at least one peewee, one junior and one senior. Teams will have 45 minutes to fit their heifers for a panel of judges. Each team must provide its own animal and supplies.

GKB Super States Award

Sponsored by GKB Cattle this contest was designed to reward the state junior associations for its members' involvement in the contests and exhibition of their cattle throughout the week at JNHE. There will be two divisions based on the number of cattle that are physically entered at the JNHE. The divisions are: Division 1) Less than 25 head; Division 2) 25 head or more. Points are awarded to the top three placings of the individuals or teams.

Team Sales Contest

The main objective of this contest is to encourage team participation while promoting the importance of communication skills, marketing technique and an understanding of performance and pedigree information. Each state may enter one junior and one senior team consisting of three members. Each team will try to convince the judges that they should purchase the team's entry by discussing pedigree and performance information, as well as visual characteristics. Divisions: peewee, junior and intermediate.

Walter and Joe Lewis Memorial High Point Senior Award

The Walter and Joe Lewis Memorial Award is one of the most coveted awards a senior member can win at the JNHE. The high point senior competitor at JNHE is recognized for achievement in leadership, teamwork, skills and competition. Selection of the award winner relies on a point system for participation in junior programs and activities. ◀

Group Painting Activity



Get your creative juices flowing with the fun group painting activity and at the end of the day you will have the perfect souvenir of some one of a kind Hereford artwork, created by you. This is open to all ages, exhibitors, parents, grandparents and friends. Cost is \$30 to pre register and \$40 on site if space allows.



JNHE Health Requirements

For health regulations for your individual state please call 608-224-4872 or visit

http://datcp.wi.gov/Animals/Animal_Movement/Cattle_Bison

Cattle from within Wisconsin have no requirements for tests or health documents.

Cattle from outside Wisconsin must:

- Be accompanied by certificate of veterinary inspection (CVI) documenting official animal ID and all required tests and certifications
- Have at least one form of official individual ID (including steers)

Acceptable animal IDs for all cattle from outside Wisconsin

- USDA metal ear tag number that is part of the National Uniform Eartagging System (NUES) (starts with state 2-digit code, also known as "brite" tag)
- 15-digit "840" tags (visual or RFID)
- Valid only if applied before March 11, 2015:
 - ♦ Manufacturer-coded RFID tag - 15-digit number with the first three digits in 900s
 - ♦ American ID tag - 8 to 12-digit number prefaced with "USA"

Brucellosis requirements for cattle from outside Wisconsin

- Steers are exempt from any brucellosis test requirement
- Cattle from brucellosis-free states are exempt from brucellosis testing requirement

- Cattle from certified brucellosis-free herds in Class A states do not need brucellosis tests if the CVI has the certified herd number and the last test date
- All other cattle need negative brucellosis test within 30 days before entering Wisconsin

Tuberculosis requirements for cattle from outside Wisconsin

Negative individual TB tests within 60 days before entering Wisconsin are required for cattle if they originate from:

- States or zones that are Modified Accredited Advanced states or that Wisconsin treats as MAA because they have had bovine TB cases
- Modified Accredited states (see section below for Michigan's Modified Accredited Zone)
- States that do not recognize Wisconsin's TB-free status
- For requirements by state go to: http://datcp.wi.gov/Animals/Animal_Movement/Cattle_Bison

Cattle from Michigan's TB Free Zone:

- Need negative individual TB test within 60 days before arrival in Wisconsin for all animals
- Whole herd TB test and import permit not required

Cattle from Michigan's MA Zone and other states with MA zones:

- Need import permits
- Need negative whole-herd TB tests within 12 months before arrival in Wisconsin for all animals 1 year and older
- Need negative individual TB tests within 60 days before entering Wisconsin
- Must return directly to the state of origin after the show, and there must be a statement on the CVI that they will be doing so

Cattle from Canada must meet current federal requirements to enter the United States. (See http://www.aphis.usda.gov/import_export/downloads/pro_imp_cattle-bison_can.pdf)

For information on obtaining an import permit:

- Online http://datcp.wi.gov/Animals/Animal_Movement/Permit_Request
- Email DATCPAnimalImports@wi.gov
- Call 608-224-4872

Physical address for health papers:

Alliant Energy Center
1919 Alliant Energy Center Way
Madison, WI 53713



JNHE Lodging

Clarion Hotel

(connected to the Alliant Energy Center)
2110 Rimrock Rd.
Phone: 608-284-1234
Rate: \$109 plus tax for Double and Triple Room; \$119 for Quad

Sheraton Madison

706 John Nolen Dr.
Phone: 608-251-2300
Rate: \$125 plus tax
Phone: 800-325-3535

Country Inn and Suites

400 River Place
Phone: 608-221-0055
Rate: \$102 plus tax

Radisson

517 Grand Canyon Dr.
Phone: 608-833-0100
Rate: \$99 plus tax

Days Inn

4402 E. Broadway Service Rd.
Phone: 608-223-1100
Rate: \$110 plus tax

Super 8

1602 W. Beltline Hwy.
Phone: 608-258-8882
Rate: \$110 plus tax

Camping at Alliant Energy Center

Contact Becky Abing
608-267-3984
abing@alliantenergycenter.com



Example of cattle stalls for JNHE

Panels are 7' tall x 10' wide with bottom tie 2' from the ground and top tie 4' from the ground.

PLEASE READ CAREFULLY

Only paid (current) members of the National Junior Hereford Association (NJHA) and American Hereford Association (AHA) who are at least 7 years old and not yet 22 years old as of January 1, 2016, may enter cattle in the show. The Annual Membership fee is \$15 and is due prior to entry.

Persons making entries in the show shall agree to abide by all the rules and regulations of the AHA, and will not hold the AHA or affiliated parties responsible for loss or injury to any animals or articles.

Please indicate proper show classification information

Please Type or Print All Entry Information – Double Check All Info.

EXHIBITOR'S ENTRY CONTRACT

2016 JUNIOR NATIONAL

HEREFORD EXPO

"A Hereford Scene in 2016"

July 9-15, 2016

Alliant Energy Center

I hereby make application to enter the animal(s) listed below for premium at the 2016 Junior National Hereford Expo (JNHE), subject to the rules and regulations as published, of which I agree to the provisions contained therein. I hereby release the AHA, JNHE organizers or Alliant Energy Center management from any claim or loss to myself, employees, animal(s) and/or equipment.

The following information must be provided to exhibit at the JNHE

Breeder No. _____ Telephone No. _____
Name _____
State Junior Association _____
Street Address _____ Date of Birth _____
City, State, ZIP _____
E-mail address _____

Exhibitor Signature _____

Parent or Guardian Signature _____

Paper Entry and Early Bird Online Entry deadline: May 1, 2016

NO PAPER ENTRIES ACCEPTED AFTER MAY 1, 2016

Final Online Deadline: June 1, 2016 – NO LATE ENTRIES ACCEPTED

Sex	Name of Animal	Animal Tattoo	Animal Reg. Number	Date of Birth	Name of Sire and Dam	Sire and Dam Reg. Numbers	Indicate entry classification: Steer, B/O heifer, Owned heifer or BOTH; B/O bull.	Animal Owned and Exhibited By
		RE			Sire			
		LE						
		RE			Sire			
		LE						
		RE			Sire			
		LE						
		RE			Sire			
		LE						
		RE			Sire			
		LE						
		RE			Sire			
		LE						

*If you wish to show the calf in both the cow-calf pair class and in the owned and/or the bred-and-owned bull or heifer show you must list the calf in both the top and bottom of this form and pay the necessary entry fees.

Cow-calf pairs will be required to pay 2 bedding fees unless showing calf separately.

Please mark one: _____ Standard Cow-Calf _____ Bred-and-Owned Cow-Calf	Cow Tattoo		Cow Birth Date	Cow Reg. Number	Name of Cow's Sire and Dam		Calf's Reg. Number	Calf Birth Date	Sex	Sire of Calf
	RE	LE			Sire	Dam				

Premise ID number: _____

Please indicate if this is your final JNHE to exhibit: Circle: YES or NO

SHOWMANSHIP — \$5 Entry Fee

☐ I want to enter the Showmanship Contest. Age as of January 1, 2016: _____

All Juniors must pre-enter for showmanship contest by June 1, 2016 — no exceptions.

*Pre-peeewee ages 5-7 must also pre-enter.

Registration/Transfer/Entry form/fees to:

Early Bird Deadline: May 1, 2016

Final Online Deadline: June, 1, 2016

Make checks payable to:

American Hereford Association

CHECK-LIST TO COMPLETE

____ Entry Form Correct/Complete

____ Shirt Size Ordered

____ Meal Ticket Order Form

____ Entered Showmanship

____ Check/Credit Card Enclosed

PAPER ENTRIES DO NOT QUALIFY FOR EARLY BIRD RATES!

Paper Entry Fee, per head\$60 (Postmarked 5/1/16)

Early Bird Online Entry Fee, per head ...\$40 (on or before 5/1/16)

Final Online Entry Fee, per head\$60 (6/1/16)

Bedding/Tie-out Fee, per head\$50 (one time fee per animal entered)

Showmanship\$ 5

A separate entry fee must be paid for each show an animal is entered in.

Entry fees\$ _____

Bedding fees\$ _____

Showmanship\$ _____

Total fees enclosed\$ _____

Attach a Xerox copy of your registration papers for accuracy in processing your entries

For online entry information, visit JrHereford.org

Meal Ticket, Golf, Painting and T-Shirt Order Form



Name _____
Address _____
Phone _____ E-mail _____

Return to: American Hereford Association/Department of Youth Activities by **May 1**. After May 1 please visit JrHereford.org to place orders online.

Hereford Scene Meal Tickets

Grab & Go Meals designed with the busy exhibitor in mind.
The all-inclusive meal ticket includes:

SATURDAY, JULY 9

Sassy Ice Cream Social

SUNDAY, JULY 10 (following the opening ceremony)

Dinner - Celebrate Wisconsin Brat Feed - Johnsonville grilled brats, potato chips, cheese curds and cookie

MONDAY, JULY 11

Breakfast - Buttermilk pancakes with maple syrup and butter, sausage links and fruit cup

TUESDAY, JULY 12

Lunch - CHB pot roast sandwich buffet with gravy, rolls, garlic mashed potatoes, fruit and homemade brownies

WEDNESDAY, JULY 13

Boxed lunch - Gourmet sandwich, bag of potato chips, orchard apple and house-baked chocolate chip cookie

Awards Night Steak Dinner - CHB steak, baked potato, dinner roll, seasonal vegetable and Wisconsin cheesecake

THURSDAY, JULY 14

Lunch - Burger and hot dog lunch buffet - CHB grilled burgers, stadium hot dogs, potato chips and a homemade cookie

☐ I want to purchase the all inclusive meal ticket at \$60 per person:

_____ (# persons) x \$60 each = \$ _____

☐ I want to purchase the \$30 Awards Steak Dinner ticket only:

_____ (# persons) x \$30 each = \$ _____

MEAL TOTAL = \$ _____

Golf

☐ I want to participate in the HYFA golf tournament

Mon., July 11 at 8:30 a.m.

\$125 per individual to play 18 holes plus cart or \$400 for a four-man team

_____ x \$125 = \$ **GOLF TOTAL**

List name of golf tournament participant(s):

Please contact Bailey Clanton at bclanton@hereford.org or Amy Cowan at acowan@hereford.org for more information.

Group Painting Activity

Open to all ages. Painters between the ages of 7-10 will need to bring along a parent and if the parent would like to paint on their own picture they will need to sign up as well. All materials will be provided, just bring along your creativity.

Cost is \$30 to pre-register or \$40 on site if space allows.

☐ I want to participate in the Group Painting project on Monday, July 11 at 9-11:30 a.m.

_____ (# persons) x \$30 each = \$ _____

☐ I want to participate in the Group Painting project on Monday, July 11 at 1-3:30 p.m.

_____ (# persons) x \$30 each = \$ _____

List name and starting time of painting participant(s):

GROUP PAINTING TOTAL = \$ _____

T-Shirts

☐ I want to order the following exhibitor shirts

One (1) free exhibitor shirt per exhibitor with cattle entered.
Please indicate size and quantity on the order form below.
Must be submitted with entry.

Available sizes: Youth XS, S, M, L, XL, and Adult S, M, L, XL, XXL, XXXL

size _____ Exhibitor's name: _____

size _____ Exhibitor's name: _____

size _____ Exhibitor's name: _____

size _____ Exhibitor's name: _____

Extra exhibitor shirts are available for \$20 each

size _____ quantity _____ x \$20 each = \$ _____

size _____ quantity _____ x \$20 each = \$ _____

size _____ quantity _____ x \$20 each = \$ _____

EXHIBITOR SHIRT TOTAL = \$ _____

GRAND TOTAL ENCLOSED (Due at time of entry) = \$ _____

Charges may NOT be applied to AHA breeder accounts.

Pay by credit card



or



Card number _____ Exp. date _____

Zip code of card holder _____ CVC code _____

or Make checks payable to AHA

Send reservations and payment to:

American Hereford Association

Dept. of Youth Activities

P.O. Box 014059

Kansas City, MO 64101-0059



Jack & Dick's Feed & Garden Inc. will be your feed and bedding supplier for the 2016 Junior National Hereford Expo.

We are offering special DISCOUNTED PRICES FOR PRE-ORDERS that are received by June 3, 2016.

We will be offering feeds from Purina, Kent, Sunglo, Formula of Champions, and other miscellaneous feed and bedding products and any special order products.

Purina

4-T-Fyer
Fitters Edge
Full Range
Champion Drive
Depth Charge
Fitter 35
Heavy Weight
Power Fuel
Ultra Full
Precon
Optiform Stress Relief Tub

Formula Of Champions

Fill'er Up
Mega Champ
Heifer Developer
Guts and Glory
Barley Blend
Right From The Start
Natural Fill
Power Finish
Show and Glow
Moonshine (Cherry Flavored Oil)

Kent

Winning Fill
Cattle Flex 1600
Show Bloom
Final Drive
Omega Blume
Gold Cote

Sunglo

Full Tank

Miscellaneous

Cottonseed Hulls
4 lb. Salt Brick
4 lb. Trace Mineral brick
Oats
Liquid Molasses
Large Flake Shavings
EZ-Pick Shavings
Wood Pelleted Bedding

For questions on price, or to place and order Call Dave Meddaugh at 262-949-2063 or call our office at 608-752-3058 or E-mail us at jndsfeed@gmail.com



ENTRY INFORMATION:

- Online entry site: JrHereford.org
- All steers showing at the Junior National Hereford Expo (JNHE) must be registered by the American Hereford Association (AHA) and out of a registered sire and dam. ALL steers must have a DNA profile on file at the AHA at the time of entry. No steer certificates will be accepted, only registration papers.
- The online entry system will not work without a registration number, so please plan ahead to ensure registrations and transfers are handled in advance of the May 1 and June 1 deadlines. **"PENDING" or "APPLIED FOR" will not, under any circumstances, be accepted online in the registration column or on the JNHE entry form. YOU MUST have a registration number before completing online entry or mailing your entry to AHA. Please attach a copy of your registration paper for accuracy in processing your entries. This includes calves on the side of cows for the cow-calf pair show.**
- Please be sure to indicate whether your heifer(s) will show in the owned show, the bred-and-owned show, or both. Heifers exhibited in both shows will require two entry fees and one bedding fee.
- Entry and order forms are in the spring *The Advantage* newsletter and at JrHereford.org. Please complete the T-shirt, meal ticket and event order form at the same time you complete the entry and showmanship form (Sure Champ will be sponsoring one free shirt to each exhibitor; additional shirts are \$20) please mark the correct shirt size for each shirt ordered. The order form is due May 1. You will be able to order meal tickets, extra t-shirts, and showmanship entries via the online system till June 1st.

BARN AND TIE OUT POLICIES FOR 2016:

- 1) Porta Cool Units WILL NOT BE allowed in the barns or in the tie out areas at the Alliant Energy Center. It was the decision of the National Junior Hereford Association (NJHA) Board to no longer allow Porta Cool Units due to the space issues in the barns.
- 2) Cattle will be stalled in the New Holland Pavilions #1 and #2 at the Alliant Energy Center. The barns are not climate controlled, but are well ventilated.
- 3) **New in 2016:** No need to arrive early and mark tie outs since tie outs will be pre-assigned by state and marked by state advisors. All cattle will be tied on the panels provided in the tie out area and NO INDIVIDUAL PENS will be built in tie outs. We appreciate your cooperation with this and your help ensuring everyone has adequate space in tie outs.
- 4) No tents will be allowed in tie outs.
- 5) No generators inside the barns. However, the use of generators placed outside the barns while plugged inside the barns is encouraged. Due to the size of the barns, it is recommended to bring adequate extension cords to ensure power needs are met.
- 6) **Per the Alliant Energy Center drilling, taping, stapling, nailing, welding, screwing and adhesives are prohibited from use on**

any livestock stalling or building surface. Altering or damaging of any County owned property will result in financial damage repair or replacement with fees assessed to the exhibitor. Heavy duty zip ties are recommended for stall assembly.

STALLING POLICY FOR 2016 JNHE:

- NO HEREFORD cattle will be allowed on the grounds and in tie outs until 5 p.m., Friday, July 8. You will be allowed to begin stall set-up at 7 p.m., Friday, July 8. NO CATTLE will be allowed in the barns until 8 a.m., Saturday, July 9. You will be stalled by state in the barn and advisors are in charge of stalling assignments within each state. **We ask that exhibitors do not set up stalls prior to your state advisor assigning the stall space. The state advisors will have final say in stalling for each state, so we ask that everyone cooperate with this stalling process in order to get the week off to a good start. State advisors will have access to the barns starting at 5 p.m. on Friday, July 8.**
- ALL CATTLE EXHIBITING AT THE JNHE MUST BE STALLED WITH THE STATE THE JUNIOR EXHIBITOR IS FROM. If under special circumstances the case arises that the junior exhibitor is competing with a different state association, it must be specified at the time of entry, no exceptions.

GENERAL RULES:

- 1) Exhibitor must be 7 years old and not 22 years old by January 1, 2016, and a member of the National Junior Hereford Association (NJHA). Dues are \$15 and must be paid prior to entry. Membership forms may be downloaded at jrhereford.org
- 2) All animals must be registered with the AHA.
- 3) Each entry, except in the bred-and-owned bull show must be owned solely by the junior exhibitor(s) and in his/her recorded ownership before **June 1**. Siblings may jointly own animals, provided both are members of the NJHA and meet NJHA age requirements. No animal is eligible to compete if recorded in joint ownership (other than the sibling rule and bred-and-owned bull rule), and no joint ownership with farm name or family name.
- 4) Horned or de-horned animals are eligible for the horned owned breeding show; polled cattle or cattle with scurs are eligible for the polled owned breeding show. Horned and polled cow-calf pairs, steers, bred-and-owned bulls and bred-and-owned heifers will show together in their respective shows. Scurs, if present, must be loose and not firmly attached to the head; they must not be removed or tampered with.
- 5) **EARLY BIRD ONLINE ENTRY FEE IS \$40 PER ENTRY, MAIL IN ENTRY FEE IS \$60 and must be postmarked by May 1.** ONLINE ENTRIES processed by June 1 are \$60 per head. A onetime bedding fee per entry is \$50 and this includes bedding for tie outs. Mail entries to the Department of Youth Activities, American Hereford Association, P.O. Box 014059, Kansas City, MO 64101.
- 6) **Final Entry and Ownership Deadline is June 1.** All animals must be registered and transferred prior to the June 1 entry and ownership deadline date. No late transfers or entries will be accepted. Entries with "pending" listed, as the registration number will not be accepted and entry will be refused. This includes calves showing on the sides of cows in the cow-calf pair show. Entry fees are non-refundable.
- 7) All cattle must be in place in the barn by 5 p.m., Saturday, July 9 and processed by 6 p.m., Saturday, July 9.
- 8) Original registration certificate must be presented at check-in. All animals will have tattoos checked unless the original registration paper has been stamped VERIFIED by an AHA staff member. Tattoos that are missing, illegible, altered, incorrect and/or in any other way disagree with the official AHA records will be justifiable cause for disqualification of entry. **Check tattoos well before leaving for the JNHE.**
- 9) Entries must meet Wisconsin health regulations. All animals must have an official health certificate. Refer to Wisconsin health requirements at JrHereford.org.
- 10) Exhibitor must show his/her own animals. Only exhibitors who are in attendance at the JNHE and are physically unable to show the animals due to illness or injury will be excused. In the case of extenuating circumstances, the family must come to the NJHA board and AHA Youth Director, in which case, the board of directors and AHA Youth Director have sole discretion as to whether the animal may be shown by a substitute showman. Owner may secure another junior member to show his/her animals if excused or if exhibitor has more than one entry in the same class. It is recommended that if you have more than one animal being shown in a class you utilize a fellow junior from your own state to assist. No adult or fellow junior may assist exhibitor in showing.
- 11) Exhibitor must wear official show shirt in both showmanship and in the entire cattle show along with entry numbers on chest and back. Additional show shirts may be purchased for \$20. (See enclosed order form)
- 12) Exhibitor must follow AHA fitting rules as stated in the official "Show Rules and Classifications" of the AHA.
- 13) State herdsmanship (neatness, decoration, workmanship and cooperation) will be judged.
- 14) If all requirements aren't met, the NJHA Board and Youth Director reserve the right to disqualify any entry.
- 15) All persons making entries in the show shall agree to abide by all the rules and regulations as outlined and will not hold the American Hereford Association or the 2016 Junior National Hereford Expo organizers responsible for accident, loss or injury to any person, animal or article.
- 16) **No farm signs or videos may be displayed at the stalls.** Family signs may be displayed if junior exhibitor(s) names are included.
- 17) There will be five showmanship divisions: pre-peewee, peewee, junior, intermediate and senior. All contestants must pre-enter by June 1. There will be no entries accepted at the show. The entry fee is \$5.

- 18) Calves at the side of cow-calf pairs may show in separate heifer or bull shows, however additional entry fees will apply. If the calf is not showing separately an additional \$50 bedding fee applies.
- 19) Breeding cattle will not be weighed or measured.
- 20) Spring 2016 EPDs will be used. EPDs for breeding cattle will be provided to the judge for him/her to use at their discretion. Junior members will only have EPDs if they are compliant with Whole Herd TPR or purchased an animal from a Whole Herd TPR breeder. If you feel that you are not compliant with Whole Herd TPR, please call the AHA records department immediately.
- 21) Steers will be weighed and ultrasounded at processing. This data will be used when breaking classes and will be provided to the judge.
- 22) Steers will be exhibited by weight.
- 23) A carcass evaluation competition will be held in conjunction with the steer show, with carcass information gathered on live steers through ultrasound. This will also occur during steer processing.
- 24) Horned and polled owned heifers will be shown separately, alternating at the divisions. Horned and polled bred-and-owned heifers will show together in one show, with one grand champion bred-and-owned heifer. Bred-and-owned heifers may also enter the owned show, but must indicate this on the entry form and must pay an additional entry fee.
- 25) Due to Alliant Energy Center regulations and safety of exhibitors **NO DOGS** will be allowed on the grounds, in the tie outs, in the barns or in the coliseum.
- 26) Any animal a junior enters may be used in the team-fitting competition and/or be asked to be used in the judging contest.
- 27) When entering contests be sure to use your age as of January 1 of the current year.
- 28) At the JNHE, the exhibitor of any animal that wins competition shall, promptly after the announcement that such animal has won such competition, permit the Association to secure a DNA sample from such animal. Please see Rule 4 of Section VII of the Association rules and regulations for how DNA testing is handled.
- 29) It is a policy of the NJHA board of directors that if an animal gets loose in the showing, an exhibitor will be given two chances to regain control of said animal throughout the duration of that particular show. After the third instance exhibitor and animal will be dismissed from the showing by an NJHA board member or AHA staff member

HEIFER RULES:

- 1) Heifer classes will include:
 - Spring calf – calved on or after 3/1/16
 - Junior calf – calved 2/1/16 to 2/28/16
 - Junior calf – calved 1/1/16 to 1/31/16
 - Late winter calf – calved 11/16/15 – 12/31/15
 - Early winter calf – calved 10/1/15 to 11/15/15
 - Senior calf – calved 8/1/15 to 9/30/15
 - Late summer yearling – calved 6/16/15 to 7/31/15

Early summer yearling – calved 5/1/15 to 6/15/15

Spring yearling – 3/1/15 to 4/30/15

Junior yearling – 1/1/15 to 2/28/15

Senior yearling – calved 8/1/14 to 12/31/14

- 2) If the number of entries warrant, classes will be divided.
- 3) Division breaks will be decided after all entries are processed.

SPECIAL COW-CALF RULES:

- 1) Cows born prior to Aug. 1, 2014. No maximum age for cows. Calf must be her natural calf, no more than 270 days in age as of the day of the show. Calves must be born on or after October 17, 2015. There will be a bred-and-owned cow-calf class and standard cow-calf classes. Winners of the bred-and-owned and standard classes will compete for champion pair.
- 2) Polled and horned pairs will be combined in one cow-calf show.
- 3) Bred-and-owned cow-calf class – Exhibitor must be the breeder and owner of both the cow and calf. The same cow-calf pair may not show in both the bred-and-owned and standard cow-calf classes.
- 4) Standard cow-calf classes – Exhibitor must be the breeder of the calf, and must have been the recorded owner of the cow since June 1, 2016.
- 5) Bull and heifer calves on cow-calf pairs are eligible to show in individual classes. They must be entered individually and pay the additional entry fee. The bred-and-owned bull show ownership rules apply to bull calves in the cow-calf show.
- 6) There will be no nurse cows allowed in the cow-calf pair show or stalled in the barns.
- 7) All calves on the side of cow-calf pairs MUST be registered and tattooed.

BRED-AND-OWNED SHOW RULES:

- 1) To be eligible for the bred-and-owned show, the exhibitor(s) must have owned the entry's dam at the time of conception and must be listed as the breeder and original owner on the registration certificate.
- 2) Bred-and-owned heifers calved after August 1, 2014 are eligible.
- 3) Bred-and-owned heifers may also show in the owned show. An additional entry fee will be charged.
- 4) Horned and polled bred-and-owned heifers will show together.
- 5) Bred-and-owned bulls calved after August 1, 2014 are eligible. There will not be a class for 2-year-old bulls.
- 6) Horned and polled bulls will show together.
- 7) Bred-and-owned bulls must have been bred by the junior member/exhibitor, but may be owned jointly with an adult/farm, provided that the junior/exhibitor is the sole breeder, original owner and is officially recorded as a current owner of that bull.
- 8) All bulls calved before January 1, 2016, must be shown with a nose lead.

STEER RULES:

- 1) All steers showing at the Junior National Hereford Expo must be registered by the American Hereford Association and out of a registered sire and dam. **All steers must have a DNA profile on file at the AHA at the time of entry.** No steer certificates will be accepted, only registration papers.
- 2) Steer classes will be divided by weight. Classes will be determined after check-in. **There will NOT be a separate prospect steer show.**

ULTRASOUND CARCASS STEER RULES:

- 1) All steers are automatically entered in the carcass evaluation without further entry fee.
- 2) Carcass information will be gathered on live steers during processing through the use of ultrasound technology. Steers will first compete in the visual show, with champions selected. Following the visual steer show, the top 10 steers in the carcass evaluation will be announced.

SPECIAL CLASSES:

- 1) **State Group of Five** – Five animals from one state, owned by three or more exhibitors and representing not more than two animals per exhibitor. Any combination of steers, heifers or bulls is acceptable. There may be only one group per state.
- 2) **Breeder Group of Three** – Three animals bred by the same junior or adult breeder as designated on the registration paper. No steers are allowed.
- 3) **Female Get-of-Sire** – Four females sired by one bull regardless of owner.
- 4) **Premier Adult and Junior Breeder** – Award points are computed from winnings in breeding animal Classes: 5 points for 1st place, 4 points for 2nd, 3 points for 3rd, 2 points for 4th, and 1 point for 5th place. Points are given only for individual classes; no points for champions or groups. The Senior Premier Breeder Award is given to the adult or farm with the top point total. The Junior Premier Breeder Award is given to the junior member with the top point total, regardless to the number exhibited. Computed the same as the National Hereford Open Shows.
- 5) **Premier Exhibitor** – Award points are computed from winnings in breeding animal Classes: 5 points for 1st place, 4 points for 2nd, 3 points for 3rd, 2 points for 4th, and 1 point for 5th place. Points are given only for individual classes; no points for champions or groups. The Premier Exhibitor Award is given to the junior with the top point total, regardless of the number exhibited. Computed the same as the National Hereford Open Shows.

CONDUCT:

The JNHE is a family event. Any false representation, interference or unsportsmanlike conduct on the part of any attendee will be dealt with by AHA staff according to the equities of the case. If any attendee interferes in any way with the judges or shows disrespect to them, or to the show, the JNHE may withhold any awards or take any other steps deemed desirable. ◀

NJHA Dates and Deadlines

Note: NO late entries or applications will be accepted after the postmark date of each deadline.

May 1 Junior National Hereford Expo (JNHE) paper entry and early bird online entry deadline (No paper entries accepted after this date.)

NJHA board candidate application deadline on hereford.myreviewroom.com

June 1 Advisor of the Year Award nominations due

JNHE final online entry and showmanship deadline
(Online only! No late entries accepted.)

JNHE ownership deadline

Photo contest entries due

Showmanship and pre-peewee showmanship entry deadline

June 15 Early bird PRIDE registration online at JrHereford.org

Extemporaneous Speaking Contest entries due

Great American CHB Grill-off recipes and entries due

Illustrated Speech Contest applications due

Peewee Speech Contest applications due

Promotional Poster Contest entries due (if unable to attend the JNHE)

July 9-15 Junior National Hereford Expo, Madison, Wis.

July 15 Final PRIDE registration deadline (may sign up in the office at JNHE)

Aug. 6-9 "Faces of Leadership" PRIDE Convention, Amarillo, Texas

Sept. 15 HYFA scholarship applications due

2016 JNHE Important Updates

Advisors will not be allowed in the barns until 5 p.m., Friday, July 8

Cattle will not be allowed on the grounds until 5 p.m., Friday, July 8

Stalls may be set up in the barn starting at 7 p.m., Friday, July 8

No porta cool units in the barns or tie outs

No pens or tents in tie outs

Regional and State Junior Hereford Shows

(this is the information available at press time, more detailed information may be found at JrHereford.org and on the NJHA Facebook page)

April

30 Young Farmers and Ranchers Youth Livestock Show, Alexandria, La.

May

6-8 The Big E, W. Springfield, Mass.
14 Pennsylvania Junior Show, Martinsburg
21-22 Maryland Junior Preview Show, Gaithersburg
27-28 Kansas Junior Show, Abilene

June

2-4 Oklahoma Junior Hereford "Red Dirt Rendezvous" Regional Preview Show, Stillwater
3-4 Kentucky Junior Hereford Preview Show, Horse Cave
3-5 Nebraska Junior Show, Kearney
3-5 Wisconsin Junior Preview Show, Jefferson
8-10 Southeast Regional Junior Hereford Show, Cookeville, Tenn.

10-12 Idaho State Junior Show, Bruneau
10-12 Iowa Junior Preview Show, Ames
10-12 Northwest Regional Junior Show, Bruneau, Idaho
10-11 South Dakota Junior Hereford Field Days, Howard
10-11 Wyoming Junior Show, Cheyenne
11 Ohio Buckeye Junior Premier Show, Wooster
12 Eastern Ohio Junior Show, Wooster
15-18 Texas Junior State Show, Belton
17-18 Georgia Junior Field Day, Athens
17-19 Illinois Junior Preview Show, Waterloo
19 Switzerland of Ohio Junior Show, Caldwell
24-26 Indiana Junior Preview Show, Lebanon
24-26 Midwest Classic Junior Preview Show, Pipestone, Minn.

July

30 New York Hereford Breeder's Classic, Canandaigua