



**Colyer**

HEREFORDS & ANGUS

**21st Annual**  
FEMALE SALE

**OCTOBER 1, 2022**

at the ranch, Bruneau, Idaho

**21st Annual**  
**FEMALE SALE**  
**OCTOBER 1, 2022**  
at the ranch, Bruneau, Idaho

Welcome to our 21st Annual Female Sale

On behalf of the Colyer family and the entire crew on the ranch, welcome to our 21st Annual fall female sale. This sale is always bittersweet as it is exciting to offer some of our very top end females but also the fact that we hate to lose these females out of our breeding program. We fully realize however, that in order to attract astute breeders we need to offer our best. We believe that you will find some of the breeds elite females throughout the offering. We have selected and bred cattle that have eye appeal while still excelling in performance and top EPD's across the board. Our females are also among the breeds best for udder quality and pigment.

Once again, the bred heifers are an exceptional group and include every female out of our replacement heifers that are carrying a heifer calf. We have also included a few exceptional bred heifers carrying bull calves. We will share 1/2 embryo interests in those and they include the full sister to Guardian. We believe you will find some excellent buys in the cow/calf pair splits. These are selected as they have the best heifer calves at their side in the 2022 heifer calf group.

We also want to make you aware that all the sale pictures had to be taken in late July in order to go to the printer. These cattle will change drastically by sale time so be sure to go to our website at [www.hereford.com](http://www.hereford.com) to view the videos closer to sale time.

We are proud that females purchased in previous sales have gone on to become elite donor cows and competitive show heifers for their new owners throughout the nation. This year's offering has that same potential. We hope that you can come to the ranch to inspect the offering and attend the sale. If you have any questions or comments, do not hesitate to contact us.

This is the sale that we share our best females with the most discriminating Hereford breeders.

Guy and Sherry Colyer  
Kyle Colyer  
Katie Colyer

Eric Eldridge  
Adam Eldridge  
Adan Juarez

Felix Juarez  
Juvenicio  
Ryan Rogers

**Colyer**  
**HEREFORDS & ANGUS**

31058 Colyer Road • Bruneau, ID 83604  
Guy: 208. 845.2313 • cell: 208.599.0340  
Kyle: 208.250.3924  
[guy@hereford.com](mailto:guy@hereford.com) • [www.hereford.com](http://www.hereford.com)

**SALE DATE & TIME**

Saturday, October 1, 2022 at a NEW TIME - 3:00 p.m. (MST)

Lunch and dinner available

**SALE LOCATION**

The ranch is located three miles northwest of Bruneau. Bruneau is 20 miles south of Mountain Home on Highway 51, 63 miles from Boise, 100 miles from Twin Falls and 173 miles from Elko.

**CONTACT US**31058 Colyer Rd., Bruneau, ID 83604 • www.hereford.com • guy@hereford.com  
Ranch.....208.845.2313 Guy, cell .....208.599.0340  
Kyle, cell .....208.250.3924 FAX .....208.845.2314**ACCOMMODATIONS**Hampton Inn & Suites .....208.587.7300  
Best Western Foothills Inn .....208.587.8477**HONORED GUESTS  
SPECIAL REPRESENTATIVES**Jack Ward, Executive Vice President, American Hereford Association  
Colt Cunningham, American Hereford Association .....918.978.8779  
Logan Ipsen, Western Livestock Journal .....916.947.2392  
Jared Patterson, Western Livestock Journal .....208.312.2386  
Mark Frisbie, Western Ag Reporter .....208.890.4517  
Rod Wesselman, Special Representative .....509.750.2185  
Jesse Bolin, Special Representative .....417.830.2835  
Dustin Layton, Layton Auction Services .....405.464.2455  
Dwayne Dietz, Special Representative .....406.672.8500  
Mark McClintock, Special Representative .....325.650.4223**EMBRYO TRANSFER  
RANCH VETERINARIAN**Galen Lusk, Dean Lusk, DVM, Western Genetics .....208.890.1164  
Jim Dorenkamp, DVM .....208.358.5767**AUCTIONEERS**C.D. "Butch" Booker .....509.989.2855  
Dustin Layton .....405.464.2455  
Kyle Colyer .....208.250.3924**INSURANCE**

Jim Bessler .....815.762.2641



Live bidding available on LiveAuctions.tv

Contact Katie at 208.599.2962 or tech support at 682.816.4900

**SALE TERMS & CONDITIONS**

TERMS ... Terms of the sale are cash unless prior arrangements have been made. When making settlement, please leave specific instructions in writing for transfer and delivery.

**SALE CONDITIONS ...**

- Each animal will be sold to the highest bidder. The auctioneer will settle any disputes as to bids, and decisions on such matters will be final. Each animal will be at purchaser's risk as soon as sold and will be turned over to the purchaser as soon as practicable after settlement. All announcements made from the auction block on sale day by the owner or the auctioneer will take precedence over statements in the catalog.
- Colyer Herefords will precondition and wean heifers prior to shipment.
- Buyers have the option of leaving females at Colyer Herefords and having them exhibit the heifers at the national shows.
- Buyer must insure their purchase while being in the care of Colyer Herefords.
- The total cost of exhibiting the heifer at Reno will be \$1,500 and Denver, Oklahoma City, or Fort Worth will be \$1,800 per show. This includes entries, show preparation and related show expenses.
- Due to increased feed costs, an additional \$8/day will be charged while the heifer is at the ranch, beginning November 1, 2022.
- Any banners, ribbons or hardware won will belong to the buyer.
- Buyer will take possession after the respective show and will be responsible for arranging transportation.
- Females that are sold as 1/2 interests, the costs will be split 50/50.
- Ownership choices – One-half interest vs. two retained flushes. We have found that some buyers like to own the entire animal and some like to only own one-half interest, therefore, we have come up with this concept so the buyer can choose which one they would like.
- 1/2 Interest Option: If one-half interest is chosen, the buyer will own one-half of the animal. The buyer will pay one-half of the show cost. It is the same as it has been every year on cattle where we have retained one-half interest. We will keep the female and breed her and when flushed, send half the eggs to the new owner. Colyer Herefords will

pay maintenance costs of the female after her show career. Buyer will pay for their portion of the flush cost when embryos are sent to them or we will alternate every other flush with the new owner, attempting to get equal amounts for each party. If the buyer has the ability to flush the female at their location, they can take possession of the animal and we will assume the opposite position and take one-half the embryos or alternate flushes.

- Retain Two Flush Option: If this option is chosen, the buyer will take possession of the heifer after her show career is complete. If shown, the buyer will pay full show expense. Colyer Herefords will retain the right to flush the female twice after she is in production, at the buyer's convenience, for a minimum of six No. 1 eggs.
- Colyer Herefords retains the right to one flush on all females in the auction.

**GUARANTEE ...** All cattle are guaranteed to be breeders. In case an adjustment is required, it will be made with a replacement animal of equal value to the animal in question or credit on the purchase of another animal.

**GENETIC ABNORMALITIES ...** Any cattle with a questionable parentage have been DNA tested and are IEF.

**BREEDING INFORMATION ...** Current breeding dates and calving dates are furnished in the catalog. Any changes will be announced sale day.

**NOTE ...** Everyone attending this sale does so at their own risk. Neither the owners or their employees assume liability, legal or otherwise, for any accidents which may occur.

**DELIVERY ...** Buyers are responsible for shipping expenses. We will help coordinate shipping to combine possible loads. Cattle will be kept for a reasonable length of time following the sale until delivery or pick up can be made.

**ABSENTEE BIDS ...** If anyone wishes to bid and cannot attend the sale, we would accept phone bids. Phone in bids with satisfaction guaranteed. We realize everyone's busy schedule and the expense of travel. Please feel free to contact Guy or Kyle for any of the sale representatives listed. The sale will be broadcast on LiveAuctions.tv for live Internet bidding.

# ~ SELLING HALF-INTEREST



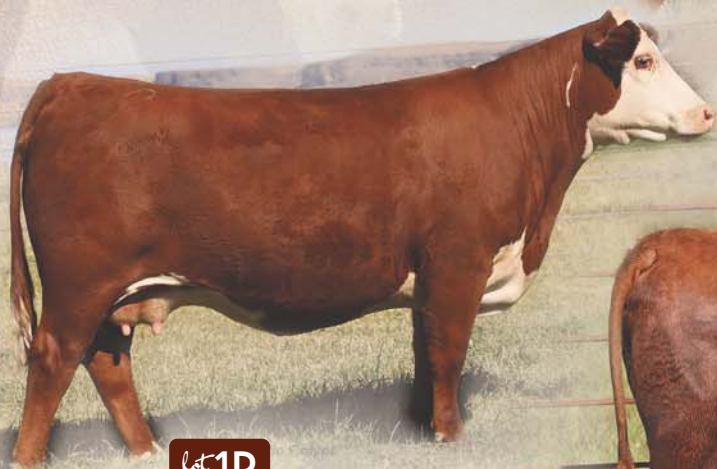
lot 1A



lot 1B



lot 1C



lot 1D



lot 1E

# IN LOTS 1A - 1E ~

## 1A



BW ..... 3.4  
 WW ..... 69  
 YW ..... 118  
 MM ..... 44  
 M&G .... 78  
 UDDR .. 1.3  
 TEAT .... 1.4  
 FAT ..... 0.077  
 REA ..... 0.85  
 MARB .. 0.4  
 \$CHB.... 175

### C 8108 BELL AIR LASS 0094

AHA# 44122922 | DOB 01.07.2020 | Polled Hereford Female

C 4038 BELL AIR 8108 ET

BR BELLE AIR 6011  
 C 105Y LADY DOMINO 4038

C R111 WILDCAT LADY 7316 ET

C ETF WILDCAT 4248 ET  
 -S LADY ADVANCE 176L R111 ET

- This one has it all
- Maternal and all the Carcass and Growth
- Top 1% \$CHB
- IMF and REA in one package
- Superior udder quality

## 1B



BW ..... 1.1  
 WW ..... 54  
 YW ..... 80  
 MM ..... 32  
 M&G .... 59  
 UDDR .. 1.3  
 TEAT .... 1.4  
 FAT ..... 0.047  
 REA ..... 0.57  
 MARB .. 0.46  
 \$CHB.... 169

### C 4013 LADY MILES 0119

AHA# 44122946 | DOB 01.09.2020 | Polled Hereford Female

INNISFAIL WHR X651/723 4013 ET

EFBEEF TFL U208 TESTED X651 ET

INNISFAIL P230 T723

C LADY MILES 5203

C MILES MCKEE 2103 ET  
 C MS OUTCROSS 0201 ET

- Moderate sized and easy fleshing
- Huge IMF number of .46
- Mother sells as Lot 31
- 169 \$CHB

## 1C



BW ..... -0.5  
 WW ..... 58  
 YW ..... 88  
 MM ..... 43  
 M&G .... 72  
 UDDR .. 1.4  
 TEAT .... 1.5  
 FAT ..... 0.037  
 REA ..... 0.57  
 MARB .. -0.02  
 \$CHB.... 95

### C 6133 FRONTIER LADY 0132 ET

AHA# 44122958 | DOB 01.10.2020 | Polled Hereford Female

TH FRONTIER 174E

TH 403A 475Z PIONEER 358C ET  
 FTF TRUSTING LADY 312A

C 1008 MILKY WAY 6133 ET

NJW 98S R117 RIBEYE 88X ET  
 HHR PAY IN GOLD 1008X ET

- Daughter of 6133
- Maternal and udder quality
- Calving ease genetics
- Fun to mate this one to stout power sire

## 1D



BW ..... -0.6  
 WW ..... 61  
 YW ..... 88  
 MM ..... 37  
 M&G .... 67  
 UDDR .. 1.4  
 TEAT .... 1.3  
 FAT ..... 0.007  
 REA ..... 0.6  
 MARB .. 0.23  
 \$CHB.... 143

### C BELLE HEIRESS 0166

AHA# 44122991 | DOB 01.19.2020 | Polled Hereford Female

C CJC BELLE HEIR ET

BR BELLE AIR 6011

C CJC 89T MISS MILES 4264 ET

EXR MS EXCEL 8014

LCX PERFECTO 11B ET

EXR MS EXCEL 6033

- Perfect made and balanced everywhere
- Big square hip and wide pinned
- Mother is ideal cow
- Lots of calving ease and carcass
- Lots of mating options

## 1E



BW ..... 2.8  
 WW ..... 54  
 YW ..... 80  
 MM ..... 28  
 M&G .... 56  
 UDDR .. 1.4  
 TEAT .... 1.3  
 FAT ..... 0.017  
 REA ..... 0.27  
 MARB .. 0.3  
 \$CHB.... 113

### C 6084 6011 BELLE 0190 ET

AHA# 44123014 | DOB 01.31.2020 | Horned Hereford Female

BR BELLE AIR 6011

BAR S LHF 028 240

BR BELLE 4082 ET

C 1311 5280 LADY 6084 ET

CRR 5280

C 88X NOTICE ME 1311 ET

- Great pedigree
- Blends Belle Air with Double Your Miles
- Direct daughter of 6084 that sells as Lot 30
- Maternal and carcass balance

# ~ SELLING HALF-INTEREST



lot 2A



lot 2B



lot 2C



lot 2D



lot 2E

# IN LOTS 2A - 2E ~

**2A**  
ANGUS

## CCC MISS TREASURE 9182

AAA# 19559805 | DOB 09.12.2019 | Angus Female

BW ..... 1.0  
WW ..... 75  
YW ..... 127  
MM ..... 22  
CEM .... 15  
MATW.. 49  
SC ..... 1.60  
WS ..... 72  
FS ..... 93  
GS ..... 33  
BS ..... 126

CONNEALY TREASURE 558H MGR TREASURE  
JARVA OF CONANGA 558H  
CCC PRODUCT LADY 4109 CONNEALY FINAL PRODUCT  
CCC PIONEER LADY 2015

- We have never had an Angus cow like this
- Tons of power and mass with EPD's
- Body Bone and Foot Quality

**2B**  
ANGUS

## CCC PLAYBOOK LASS 0069

AAA# 19778430 | DOB 01.07.2020 | Angus Female

BW ..... 1.1  
WW ..... 57  
YW ..... 97  
MM ..... 30  
CEM .... 17  
MATW.. -10  
SC ..... 0.39  
WS ..... 68  
FS ..... 84  
GS ..... 35  
BS ..... 119

TEX PLAYBOOK 5437 BASIN PAYWEIGHT 1682  
RITA 1C43 OF 9M26 COMPLETE  
CCC GRANITE LADY 6126 CONNEALY BLACK GRANITE  
CCC MS ONE WAY 9030

- Love the look of Playbook daughters
- Maternal power top and bottom
- Top 1% \$M, Top 10% \$C

**2C**  
ANGUS

## CCC KNOW HOW HOLLY 0079

AAA# 19778437 | DOB 01.09.2020 | Angus Female

BW ..... -0.9  
WW ..... 67  
YW ..... 130  
MM ..... 28  
CEM .... 13  
MATW.. 77  
SC ..... 0.85  
WS ..... 65  
FS ..... 115  
GS ..... 72  
BS ..... 187

HOOVER KNOW HOW HOOVER NO DOUBT  
BLKCP EMPRESS ELLSTON L265  
CCC UPSHOT GAL 3095 EXAR UPSHOT 0562B  
CCC MS DIRECT 6044

- Great blend of genetics
- Numbers for days with look and quality
- In top 15% for every dollar index
- Top 1% \$C

**2D**  
ANGUS

## CCC PLAYBOOK PAULA 0132

AAA# 19778476 | DOB 01.20.2020 | Angus Female

BW ..... -2.9  
WW ..... 55  
YW ..... 100  
MM ..... 44  
CEM .... 18  
MATW.. 7  
SC ..... 0.68  
WS ..... 79  
FS ..... 81  
GS ..... 28  
BS ..... 109

TEX PLAYBOOK 5437 BASIN PAYWEIGHT 1682  
RITA 1C43 OF 9M26 COMPLETE  
CCC PRODUCT LADY 4091 CONNEALY FINAL PRODUCT  
CCC LADY BISMARCK 1044

- Great build and design in this one
- Perfect sized, big hipped, wide pinned
- Top 1% CED and \$M
- Great young cow huge future

**2E**  
ANGUS

## CCC TREASURE TESS 0166

AAA# 19778504 | DOB 02.22.2020 | Angus Female

BW ..... 1.4  
WW ..... 98  
YW ..... 169  
MM ..... 27  
CEM .... 12  
MATW.. 119  
SC ..... 1.65  
WS ..... 90  
FS ..... 99  
GS ..... 63  
BS ..... 161

CONNEALY TREASURE 558H MGR TREASURE  
JARVA OF CONANGA 558H  
CCC RENOWN 7060 S A V RENOWN 3439  
CCC LADY ANSWER 3050

- Mother is a big time donor 7060
- Great maternal pedigree with carcass
- Top 1% Weaning and Yearling
- Top 3% \$C

# ~ OPEN HEIFERS ~



lot 3



C GKB Guardian 1015 ET, a full brother to Lot 3.



Loewen Genesis G16 ET, sire of Lot 3.



C CJC Belle Air Lass 8037 ET, dam of Lot 3.



lot 4



C 88X Notice Me 1311 ET, dam of Lot 4.

**3**

BW	.....	3.4
WW	.....	69
YW	.....	113
MM	.....	33
M&G	....	68
UDDR	..	1.20
TEAT	....	1.20
FAT	.....	0.037
REA	.....	0.66
MARB	..	0.53
SCHB	....	167

## C 8037 GENESIS GAL 2029 ET

AHA# 44359732 | DOB 01.04.2022 | Polled Hereford Female

LOEWEN GENESIS G16 ET NJW 79Z Z311 ENDURE 173D ET  
 LOEWEN 77 48 MISS 344N 4RB42ET  
 C CJC BELLE AIR LASS 8037 ET BR BELLE AIR 6011  
 C CJC 89T MISS MILES 4264 ET

What a great start to the heifer calves of 2022 crop with a full sister to Guardian the record selling bull from last years national sale. This one is special with that dark color and performance of her brother in a feminine package. Possibilities are endless with this one as she has as much earning potential and value as anything you will find.

**4**

BW	.....	3.4
WW	.....	66
YW	.....	104
MM	.....	32
M&G	....	65
UDDR	..	1.20
TEAT	....	1.30
FAT	.....	0.027
REA	.....	0.82
MARB	..	0.29
SCHB	....	149

## C 1311 GENESIS GAL 2138 ET

AHA# 44359830 | DOB 01.16.2022 | Polled Hereford Female

LOEWEN GENESIS G16 ET NJW 79Z Z311 ENDURE 173D ET  
 LOEWEN 77 48 MISS 344N 4RB42ET  
 C 88X NOTICE ME 1311 ET NJW 98S R117 RIBEYE 88X ET  
 C NOTICE ME ET

Without question this is a sale feature and one that has the potential to replace her mother 1311. After this calf crop is sold she will surpass 1 million dollars in progeny sales. This is the only female in this flush so she truly is one of a kind. Her brothers are as good as it gets and you could literally make a set of pen bulls out of them exclusively. So much could be said about this female but the reality is she speaks for herself and she has the pedigree to back it up.



All heifer calves have been genomic tested. Watch for updated EPD's online.



lot 5



C Real Deal 0137 ET,  
sire of Lots 5 & 6.



KLD RW Mercy Me D83 ET,  
dam of Lots 5 & 6.



lot 6

5

**C D83 REAL DEAL 2064 ET**

AHA# 44359763 | DOB 01.08.2022 | Polled Hereford Female

6

**C D83 REAL DEAL 2039 ET**

AHA# 44359741 | DOB 01.05.2022 | Polled Hereford Female

- BW ..... 3.4
- WW ..... 63
- YW ..... 105
- MM ..... 35
- M&G .... 66
- UDDR .. 1.20
- TEAT .... 1.20
- FAT ..... 0.03
- REA ..... 0.56
- MARB .. 0.03
- SCHB.... 155

C REAL DEAL 0137 ET

KLD RW MERCY ME D83 ET

INNISFAIL WHR X651/723 4013 ET  
C CJC 89T MISS MILES 4264 ET  
UPS SENSATION 2296 ET  
RW MINDY 3078 6096

These sisters are truly a center piece of this years offering. Lot 5 is simply one of the very best you will find with power, style and balance. Lot 6 is made very similar, not as far along but closing the gap fast. These will be fun to watch for later on down the road as show heifers and cows. Whatever you choose this genetic package is a sure bet. Two brothers are pen bull caliber will be close by sale day to compare.

All heifer calves have been genomic tested. Watch for updated EPD's online.

# ~ OPEN HEIFERS ~



lot 7



Loewen Genesis G16 ET,  
sire of Lots 7 & 8.



C Bar1 Bailees Double Miles ET,  
dam of Lots 7 & 8.



lot 8

7

## C 8105 GENESIS LASS 2018 ET

AHA# 44359721 | DOB 01.02.2022 | Polled Hereford Female

8

## C 8105 GENESIS GAL 2078 ET

AHA# 44359774 | DOB 01.09.2022 | Polled Hereford Female

BW	.....	3.5
WW	.....	67
YW	.....	105
MM	.....	25
M&G	....	58
UDDR	..	1.30
TEAT	....	1.20
FAT	.....	0.027
REA	.....	0.69
MARB	..	0.19
SCHB	....	129

LOEWEN GENESIS G16 ET

NJW 79Z Z311 ENDURE 173D ET  
LOEWEN 77 48 MISS 344N 4RB42ET  
C DOUBLE YOUR MILES 6077 ET

C BAR1 BAILEES DOUBLE MILES ET

BR BAILEE 1066 ET

These sisters are a bit different and depending on what you are searching for we are sure you will find it in these females. Lot 7 is the greener made, cool fronted one that will be one to watch for later on down the road as a show heifer. We feel you will love the combination female that is hard to fault in lot 8. Whatever you choose this genetic package is a sure bet. Two brothers are pen bull caliber will be close by sale day to compare.



C 88X Notice Me 1313 ET,  
dam of Lot 9.

lot 9



Loewen  
Genesis G16 ET,  
sire of Lots  
9 & 10.



C 812U Miss Miles 4196 ET,  
dam of Lot 10.

lot 10

9

**C 1313 GENESIS GAL 2098 ET**

AHA# 44359793 | DOB 01.10.2022 | Polled Hereford Female

LOEWEN GENESIS G16 ET

C 88X NOTICE ME 1313 ET

NJW 79Z Z311 ENDURE 173D ET  
LOEWEN 77 48 MISS 344N 4RB42ET  
NJW 98S R117 RIBEYE 88X ET  
C NOTICE ME ET

BW .....	3.1
WW .....	64
YW .....	97
MM .....	33
M&G .....	64
UDDR ..	1.20
TEAT .....	1.20
FAT .....	-0.003
REA .....	0.62
MARB ..	0.36
SCHB....	153

This is a blood sister to lot 4 and one that has many of her great qualities. Not everyone will be able to get Lot 4 and if you fall short this will be a great backup plan. She has many of her qualities and sometimes at a quick glance you can mistake them for one another. Her mother is also a full sister to Miles and is a stout power cow that still looks great at her age. Super sound footed and massive boned. Genesis was a great match.

10

**C 4196 GENESIS GAL 2041 ET**

AHA# 44360495 | DOB 01.05.2022 | Polled Hereford Female

LOEWEN GENESIS G16 ET

C 812U MISS MILES 4196 ET

NJW 79Z Z311 ENDURE 173D ET  
LOEWEN 77 48 MISS 344N 4RB42ET  
C MILES MCKEE 2103 ET  
CL 1 DOMINETTE 812U 1ET

BW .....	3.8
WW .....	65
YW .....	107
MM .....	33
M&G .....	66
UDDR ..	1.40
TEAT .....	1.30
FAT .....	0.027
REA .....	0.52
MARB ..	0.22
SCHB....	135

Study this one hard and we feel she is complete and fault free. These are the kind that keep you in the business for years to come. Balanced set of numbers and a phenotype that everyone can enjoy. Her mother is a broody power cow with unmatched foot quality and structure.

# ~ OPEN HEIFERS ~



lot 11



KLD RW  
Monica D715  
ET, dam of  
Lot 11.



KLD EB Trump D58, sire of Lot 11.



C Bailees  
McKee 4297  
ET, dam of  
Lot 12.



EFBEEF BR Validated B413,  
sire of Lot 12.



lot 12

## 11

### C D715 MELANIA 2142 ET

AHA# 44363397 | DOB 01.17.2022 | Horned Hereford Female

KLD EB TRUMP D58

KLD RW MONICA D715 ET

WLB GLOBAL 72M 50S  
KLD RW LADY ROLEX D19  
CRR 109 ON POINT 559 ET  
RW MINDY 3078 6096

BW ..... 3.5  
WW ..... 56  
YW ..... 96  
MM ..... 29  
M&G ..... 57  
UDDR .. 1.20  
TEAT .... 1.20  
FAT ..... -0.003  
REA ..... 0.48  
MARB .. -0.06  
SCHB... 109

This may be the big time show heifer of the group. Powerful build and shape with great look from the side and quality. Her mother was purchased with the Allen family in Texas and had a great show career. Numerous division champions at National shows. She has been a little light in terms of embryo production so this female is unique and hard to come by.

## 12

### C B413 VALORIE 2058 ET

AHA# 44359757 | DOB 01.07.2022 | Polled Hereford Female

EFBEEF BR VALIDATED B413

C BAILEES MCKEE 4297 ET

EFBEEF TFL U208 TESTED X651 ET  
EFBEEF 4R THYRA Y865  
C MILES MCKEE 2103 ET  
BR BAILEE 1066 ET

BW ..... 2.9  
WW ..... 58  
YW ..... 90  
MM ..... 31  
M&G ..... 60  
UDDR .. 1.30  
TEAT .... 1.30  
FAT ..... 0.007  
REA ..... 0.70  
MARB .. 0.68  
SCHB... 168

Build a cowherd with this kind. She is one of the best young Validated females you can find and comes with all the values you could hope for in one made this right. She is smooth and feminine but still has something to her. It is hard to get one with a .69 IMF .72 REA and a 171 \$CHB and be this good.

**All heifer calves have been genomic tested. Watch for updated EPD's online.**



C Real Deal 0137 ET, sire of Lot 13 & 14.



lot 13



lot 14



C Black Hawk Lass 8019, dam of Lot 13 & 14.

**13** **C 8019 REAL DEAL 2179 ET**  
 AHA# 44359868 | DOB 01.31.2022 | Polled Hereford Female

**14** **C 8019 DELLA 2181 ET**  
 AHA# 44359870 | DOB 01.31.2022 | Polled Hereford Female

BW	.....	2.8
WW	.....	58
YW	.....	84
MM	.....	31
M&G	....	60
UDDR	..	1.40
TEAT	....	1.40
FAT	.....	-0.013
REA	.....	0.41
MARB	..	0.30
SCHB	....	129

**C REAL DEAL 0137 ET**      INNISFAIL WHR X651/723 4013 ET  
 C CJC 89T MISS MILES 4264 ET  
**C BLACK HAWK LASS 8019**      C BLACK HAWK DOWN ET  
 C 88X RIBEYE LADY 6245

Maternal cow package here and ones that you can bet will make a donor. They have one of the most interesting pedigrees in the offering. These are maternal sisters to Key West sired by Real Deal. They were the top two selling bulls in our 2021 sale respectively. It is fun to be able to blend together these two elite sires into one package.

# ~ OPEN HEIFERS ~



lot 15



C CJC Belle Heir ET, sire of Lot 15.



BR Bailee 1066 ET, dam of Lot 15.



lot 16



C Barracuda 0114 ET, sire of Lot 16.

15

## C BAILEE HEIRESS 2006 ET

AHA# 44360488 | DOB 01.01.2022 | Horned Hereford Female

C CJC BELLE HEIR ET

BR BELLE AIR 6011

C CJC 89T MISS MILES 4264 ET

BR BAILEE 1066 ET

DM BR SOONER

BR GABRIELLE 5082

BW ..... 4.0  
 WW ..... 68  
 YW ..... 109  
 MM ..... 28  
 M&G ..... 62  
 UDDR .. 1.40  
 TEAT .... 1.30  
 FAT ..... -0.013  
 REA ..... 0.77  
 MARB .. 0.18  
 SCHB.... 144

Bailee has been a fixture around here for many years but this will likely be the last one of these females available to purchase. We lost her this winter but she has left behind so many great ones. This is a perfect example of that. Down the road we were trying to mate her to sires that we knew could make replacements for her and Belle Heir is that kind of sire.

16

## C 0114 CUDA LASS 2051

AHA# 44359750 | DOB 01.06.2022 | Polled Hereford Female

C BARRACUDA 0114 ET

BEHM 100W CUDA 504C

C 105Y LADY DOMINO 4038

C 88X RIBEYE LADY 6053

NJW 98S R117 RIBEYE 88X ET

C MS NITRO 0294

BW ..... 4.0  
 WW ..... 66  
 YW ..... 105  
 MM ..... 40  
 M&G ..... 73  
 UDDR .. 1.30  
 TEAT .... 1.30  
 FAT ..... -0.033  
 REA ..... 0.68  
 MARB .. 0.25  
 SCHB.... 147

This is the only female in the sale by Barracuda. ABS purchased this sire from us and he is getting used heavily in both the purebred and commercial world. He is a sire that will be used heavily in the future after seeing his first calf crop. All the pedigree, carcass and performance with maternal quality all in one. This female has some of our most elite cows in her immediate pedigree.



C R98 Miles 6303 ET, dam of Lot 17.



Katie Colyer

lot 17



Katie Colyer

lot 18



C 5280  
Diversified  
6121 ET,  
sire of Lot 18.



KLD Melania D76 ET,  
dam of Lot 18.

17

**C 6303 GENIE 2198 ET**

AHA# 44359886 | DOB 02.04.2022 | Polled Hereford Female

LOEWEN GENESIS G16 ET

C R98 MILES 6303 ET

NJW 79Z Z311 ENDURE 173D ET  
LOEWEN 77 48 MISS 344N 4RB42ET  
C MILES MCKEE 2103 ET  
-S M326 LADY ADV 176L R98 ET

Can't ask for anymore color and pigment that this one is capable of passing on. She is a moderate sized cowy made female that you would love to have hundreds of these kind. Easy fleshing and well built to withstand many environments. Her mother is a Miles out of the great "R98" donor. These are the kind the stockman buy."

BW .....	4.3
WW .....	65
YW .....	106
MM .....	33
M&G .....	66
UDDR ..	1.20
TEAT .....	1.10
FAT .....	0.037
REA .....	0.54
MARB ..	0.24
SCHB.....	136

18

**C MELANIA DIVA 2228 ET**

AHA# 44359917 | DOB 02.19.2022 | Polled Hereford Female

C 5280 DIVERSIFIED 6121 ET

KLD MELANIA D76 ET

RRR 5280  
C 88X NOTICE ME 1311 ET  
CRR 719 CATAPULT 109  
RW KLD 122L MINDY Y3078 ET

Lots of look and power in this female out of D76. We won't be getting many more out of this Donor so now is the time if you want a daughter of hers. This one is bred to be a show heifer both top and bottom. Lots of bone, style and presence.

BW .....	5.7
WW .....	63
YW .....	100
MM .....	26
M&G .....	58
UDDR ..	1.20
TEAT .....	1.20
FAT .....	-0.003
REA .....	0.59
MARB ..	-0.08
SCHB....	107

# ~ OPEN HEIFERS ~



Lot 19



RW KLD Wendi 109 7031 ET, dam of Lot 19.



Churchill Lady 0200X ET,  
maternal granddam of Lot 20.



Lot 20

## 19

### C WENDI DIVERSIFIED 2140 ET

AHA# 44359832 | DOB 01.17.2022 | Polled Hereford Female

BW	5.2
WW	61
YW	96
MM	26
M&G	56
UDDR	1.20
TEAT	1.10
FAT	-0.013
REA	0.57
MARB	-0.09
SCHB	104

C 5280 DIVERSIFIED 6121 ET

RW KLD WENDI 109 7031 ET

CRR 5280

C 88X NOTICE ME 1311 ET

CRR 719 CATAPULT 109

RW MINDY 3078 6096

Show heifer prospect here with great neck extension and shape. Her sire Diversified has been able to produce not only great show heifers but they also make cows in the end. Her mother Wendi was a unique made cow with tons of bone and power. Big square hip and perfect hind leg. Manage and feed this one right and she will be a fun project.

## 20

### C 6474D BELLE 2230 ET

AHA# 44359919 | DOB 02.20.2022 | Polled Hereford Female

BW	2.7
WW	57
YW	89
MM	34
M&G	63
UDDR	1.30
TEAT	1.40
FAT	0.047
REA	0.53
MARB	0.34
SCHB	137

BR BELLE AIR 6011

CHURCHILL LADY 6474D

BAR S LHF 028 240

BR BELLE 4082 ET

NJW 98S R117 RIBEYE 88X ET

CHURCHILL LADY 0200X ET

This one is really well shaped and has lots of turn and curve to her rib cage. She is big topped and bold hipped with a great look from the side. Her mother is a moderate sized pretty uddered cow that is hard to poke a hole in. We love this ones balance everywhere and her numbers allow you to mate to about any sire. She is one of the youngest heifers in the sale.





KLD RW Mercy Me D83 ET,  
dam of Lot 21 & 22.



lot 21



lot 22



C Double Your Miles 6077 ET,  
sire of Lots 21 & 22.

21

**C D83 MILES 1266 ET**

AHA# 44293626 | DOB 08.25.2021 | Horned Hereford Female

BW	4.5
WW	66
YW	104
MM	35
M&G	67
UDDR	1.30
TEAT	1.30
FAT	0.007
REA	0.67
MARB	-0.21
\$CHB	102

22

**C D83 MILES 1267 ET**

AHA# 44293627 | DOB 08.25.2021 | Horned Hereford Female

BW	4.9
WW	62
YW	94
MM	31
M&G	62
UDDR	1.30
TEAT	1.30
FAT	-0.033
REA	0.61
MARB	-0.15
\$CHB	99

**C DOUBLE YOUR MILES 6077 ET**

**KLD RW MERCY ME D83 ET**

CRR 5280  
C 88X NOTICE ME 1311 ET  
UPS SENSATION 2296 ET  
RW MINDY 3078 6096

These two sisters should gather a lot of attention on sale day. If you are looking for some serious show heifer prospects on the horned side these will fit. Both sire and dam have won at the highest level and this pedigree is full of National Champions. These females have elite phenotype and look and will be fun to exhibit this fall. One is a little prettier one is a little more power but they are both cut from the same cloth.

# ~ OPEN HEIFERS ~



Lot 23



Loewen Genesis G16 ET, sire of Lot 23 & 24.



Lot 24



SULL Diana 5355C ET, dam of Lot 23 & 24.

**23**

BW	.....	4.7
WW	.....	64
YW	.....	104
MM	.....	32
M&G	.....	64
UDDR	..	1.10
TEAT	....	1.00
FAT	.....	0.027
REA	.....	0.8
MARB	..	0.26
\$CHB	....	164

## C 5355C DIANA GENESIS 1270 ET

AHA# 44293630 | DOB 08.26.2021 | Polled Hereford Female

**24**

BW	.....	3.3
WW	.....	64
YW	.....	102
MM	.....	32
M&G	....	65
UDDR	..	1.30
TEAT	....	1.20
FAT	.....	0.017
REA	.....	0.70
MARB	..	0.26
\$CHB	....	150

## C 5355C GENESIS 1297 ET

AHA# 44293652 | DOB 08.30.2021 | Polled Hereford Female

LOEWEN GENESIS G16 ET

SULL DIANA 5355C ET

NJW 79Z Z311 ENDURE 173D ET  
 LOEWEN 77 48 MISS 344N 4RB42ET  
 C MILES MCKEE 2103 ET  
 TCC MS DIANA 01

These flush sisters are as good as they come in terms of combining phenotype with superior genetics. Lot 23 is the covy powerful built one that has tons of rib and volume. Lot 24 is a sleek fronted, great profiling female and both have the color and pigment we are all after. 5355C is always a visitor favorite because of her extra presence and eye appeal.



lot 25

<b>25</b>
GE-EPD
BW ..... 4.2
WW ..... 73
YW ..... 117
MM ..... 39
M&G .... 46
UDDR .. 1.20
TEAT ... 1.30
FAT ..... -0.013
REA ..... 0.96
MARB .. 0.34
SCHB.... 181

**C 8140 LADY HAWK 1288 ET**

AHA# 44293645 | DOB 03.27.2021 | Polled Hereford Female

**C 4212 BLACK HAWK 7057 ET**

C BLACK HAWK DOWN ET  
C 95T LADY TRUST 4212 ET

**C CJC BELLE AIR LASS 8140 ET**

BR BELLE AIR 6011  
C CJC 89T MISS MILES 4264 ET

Here is a great donor prospect with chart topping performance and carcass numbers. Her mother 8140 is a full sister to Belle Heir and had the highest IMF ratio of her contemporaries. 7057 was the high selling bull in our 2018 bull sale to Copper Creek in Canada and was used as a higher carcass, heavier pigmented version of Black Hawk Down. This one should blend well with numerous sires.



C 4212 Black Hawk 7057 ET, sire of Lot 25.



C CJC Belle Air Lass 8140 ET, dam of Lot 25.



# ~ COW / CALF PAIRS ~



lot 26

**26**

BW	.....	3.6
WW	.....	64
YW	.....	100
MM	.....	34
M&G	....	66
UDDR	..	1.3
TEAT	....	1.4
FAT	.....	-0.023
REA	.....	0.57
MARB	..	0.25
SCHB	....	139

## C 4212 BLACK HAWK LADY 7073 ET

AHA# 43791046 | DOB 01.11.2017 | Polled Hereford Female

C BLACK HAWK DOWN ET

WLB WINCHESTER POWERBALL 27A  
BR BAILEE 1066 ET

C 95T LADY TRUST 4212 ET

NJW 73S M326 TRUST 100W ET  
RPH MAIDEN 95T

AI bred, due 01.27.2023 to C 6474D Endure 0321 ET.

We are kicking off this section of the pair splits with a cow that has always been a standout in the pasture. She is great looking and has a tremendous udder like Black Hawk Down is known for. Her mother is a full sister to Wildcat and this cow is a full sister to 7057 who was the high selling bull in our 2018 spring sale to Copper Creek in Canada. She has a set of numbers that allows you to mate her a number of ways and we feel this mating with 0321 will be the ticket.



lot 26A

**26A**

BW	.....	3.8
WW	.....	68
YW	.....	105
MM	.....	29
M&G	....	63
UDDR	..	1.40
TEAT	....	1.40
FAT	.....	0.017
REA	.....	0.55
MARB	..	0.46
SCHB	....	158

## C 0195 BLACK HAWK LASS 2010

AHA# 44359714 | DOB 01.01.2022 | Polled Hereford Female

C CJC 4264/4013/0195

INNISFAIL WHR X651/723 4013 ET  
C CJC 89T MISS MILES 4264 ET

C 4212 BLACK HAWK LADY 7073 ET

C BLACK HAWK DOWN ET  
C 95T LADY TRUST 4212 ET

From the side this one puts it together as good as any. Her sire was purchased by Sommers in Wyoming and we are really happy with his calves. Tremendous carcass merit but as you can tell by this one they have lots of look to them as well. IMF of .46 and a \$CHB of 157 make this one a great breeding tool.



lot 27

**27**

BW	.....	1.9
WW	.....	54
YW	.....	82
MM	.....	36
M&G	....	63
UDDR	..	1.3
TEAT	....	1.4
FAT	.....	-0.03
REA	.....	0.48
MARB	..	0.18
SCHB	....	119

## C 88X 1008X CANDY 7105 ET

AHA# 43791076 | DOB 01.13.2017 | Polled Hereford Female

NJW 98S R117 RIBEYE 88X ET

SHF RIB EYE M326 R117

NJW 9126J DEW DOMINO 98S

HHR PAY IN GOLD 1008X ET

C -S PURE GOLD 98170

RR BONDED LADY P824

AI bred, due 01.21.2023 to C 8086 Sancho 1084 ET.

A full sister to Eye Candy and Candy Cane in the prime of her production years. This cow is a standout in the pasture and always raises a big stout calf and this year is no different. ABWR of 96, AWWR of 103, AYWR 104. One top daughter sold to Jennings, IL. Lots of pigment and eye appeal here with lots of power and performance. She is carrying a pregnancy to the reigning Denver Champion Sancho 1084 which should produce incredible results.



lot 27A

**27A**

BW	.....	1.7
WW	.....	58
YW	.....	90
MM	.....	33
M&G	....	62
UDDR	..	1.40
TEAT	....	1.40
FAT	.....	0.017
REA	.....	0.49
MARB	..	0.36
SCHB	....	144

## C 0137 RITA 2148

AHA# 44359838 | DOB 01.21.2022 | Polled Hereford Female

C REAL DEAL 0137 ET

INNISFAIL WHR X651/723 4013 ET  
C CJC 89T MISS MILES 4264 ET

C 88X 1008X CANDY 7105 ET

NJW 98S R117 RIBEYE 88X ET  
HHR PAY IN GOLD 1008X ET

The first calf crop sired by Real Deal should add some spice to this offering. This one has a pedigree that blends so many great pieces together. Mother is a full sister to Eye Candy. Study the calving ease and carcass genetics you get with this one.

**28**

BW ..... 1.8  
 WW ..... 57  
 YW ..... 92  
 MM ..... 41  
 M&G .... 70  
 UDDR .. 1.3  
 TEAT .... 1.2  
 FAT ..... 0.007  
 REA ..... 0.62  
 MARB .. 0.33  
 SCHB.... 160

**C LADY WILDCAT 8330**

AHA# 43966939 | DOB 08.23.2019 | Polled Hereford Female

**C ETF WILDCAT 4248 ET** NJW 73S M326 TRUST 100W ET  
 RPH MAIDEN 95T  
**C MISS MILES 4142** C MILES MCKEE 2103 ET  
 C MS MAUI JIM 9095

AI bred, due 01.01.2023 to C GKB Guardian 1015 ET.

Excellent young cow here with incredible carcass figures to go along with her look and profile. She has a double shot of the great Notice Me on the bottom side of her pedigree and also blends together two of NJW most famous cows 985 and 73S. With these numbers and cow families behind this one you can't go wrong. She weaned her first calf at 107 ratio and this one should do the same or better.

**lot 28****28A**

BW ..... 3.0  
 WW ..... 62  
 YW ..... 104  
 MM ..... 31  
 M&G .... 62  
 UDDR .. 1.30  
 TEAT .... 1.30  
 FAT ..... -0.003  
 REA ..... 0.79  
 MARB .. 0.17  
 SCHB.... 151

**C 9354 VALOR LASS 2049**

AHA# 44359748 | DOB 01.06.2022 | Horned Hereford Female

**C BAR1 BAILEE VALOR 9354** HAPP BK VALOR 37C ET  
 BR BAILEE 1066 ET  
**C LADY WILDCAT 8330** C ETF WILDCAT 4248 ET  
 C MISS MILES 4142

This is one of the widest pinned, biggest hiped females we have produced. She was incredible shaped as a young calf and is still a standout. Her sire 9354 was purchased by the Davis family in Kansas and we are sure pleased with his calves. Lots of power and look like this one.

**lot 28A****29**

BW ..... 4.2  
 WW ..... 57  
 YW ..... 85  
 MM ..... 37  
 M&G .... 65  
 UDDR .. 1.2  
 TEAT .... 1.2  
 FAT ..... 0.007  
 REA ..... 0.39  
 MARB .. 0.07  
 SCHB.... 114

**C R98 KATIE 7189 ET**

AHA# 43791153 | DOB 01.23.2017 | Horned Hereford Female

**C ETF WILDCAT 4248 ET** NJW 73S M326 TRUST 100W ET  
 RPH MAIDEN 95T  
**-S M326 LADY ADV 176L R98 ET** KCF BENNETT 3008 M326  
 HH MISS ADVANCE 176L

AI bred, due 01.22.2023 to C CJC 4264/4013/0195 ET.

Here is a goggle eyed, moderate framed cow that gets it done. She is a direct daughter of "R98" out of Wildcat so you can imagine pigment and color to burn. Her daughter at side in our opinion could be one of the sleepers in the sale and the mating she is carrying out of 0195 should be just the thing for this one. 0195 IMF ratio was 201 and his IMF EPD of .62 puts him in the top 1%. He now serves in the Sommers herd in WY.

**lot 29****29A**

BW ..... 4.2  
 WW ..... 59  
 YW ..... 91  
 MM ..... 30  
 M&G .... 59  
 UDDR .. 1.20  
 TEAT .... 1.20  
 FAT ..... 0.027  
 REA ..... 0.63  
 MARB .. 0.04  
 SCHB.... 120

**C 9490 KATIE ADVANCE 2225**

AHA# 44359913 | DOB 02.17.2022 | Horned Hereford Female

**ECR 628 ADVANCE 9490 ET** H FHF ADVANCE 628 ET  
 ECR CANDI 5451 ET  
**C R98 KATIE 7189 ET** C ETF WILDCAT 4248 ET  
 -S M326 LADY ADV 176L R98 ET

This is the one to watch in the future in our opinion. If you are looking for a sleeper horned heifer this one here could be the one. As good necked and attractive as any just needs a little more time but we feel by this fall and next year as a bred this one could be tough.

**lot 29A**

# ~ COW / CALF PAIRS ~



**30**

## C 1311 5280 LADY 6084 ET

AHA# 43672895 | DOB 01.09.2016 | Horned Hereford Female

BW .....	4.2
WW .....	58
YW .....	86
MM .....	22
M&G .....	51
UDDR ..	1.3
TEAT ....	1.3
FAT .....	0.017
REA .....	0.660
MARB ..	.04
SCHB....	118

CRR 5280

CRR 719 CATAPULT 109

CRR 435 KELLY 178

C 88X NOTICE ME 1311 ET

NJW 98S R117 RIBEYE 88X ET

C NOTICE ME ET

Selling open and ready to flush.

Here is a donor with a tremendous track record and a direct daughter of the million dollar donor 1311. This cow was named the Champion Horned female as a calf in Reno for David Smith and we had the opportunity to purchase her back in their dispersion. That turned out to be a great decision as she has been a great producing donor and just this past year was the donor dam of a Denver Reserve Champion pen bull. She averages 7.2 good embryos per flush and on her most recent flush she had 18 good ones.

lot 30



**30A**

## C KEY WEST LASS 2052

AHA# 44359751 | DOB 01.06.2022 | Polled Hereford Female

BW .....	3.3
WW .....	63
YW .....	94
MM .....	29
M&G .....	61
UDDR ..	1.40
TEAT ....	1.40
FAT .....	-0.013
REA .....	0.63
MARB ..	0.15
SCHB....	133

C KEY WEST 0065

C CJC BELLE HEIR ET

C BLACK HAWK LASS 8019

C 1311 5280 LADY 6084 ET

CRR 5280

C 88X NOTICE ME 1311 ET

You can't find a better maternal pedigree than this one and she stacks so many maternal sires and dams into one. We feel these Key West daughters in production could be as good as it gets. Blackhawk Down, Belle Heir and cows like 1311 and Notice Me. You can't miss. Three-quarter brother was a member of Reserve Champion pen in Denver 2022.

lot 30A



**31**

## C LADY MILES 5203

AHA# 43576719 | DOB 01.17.2015 | Horned Hereford Female

BW .....	1.8
WW .....	41
YW .....	56
MM .....	35
M&G .....	55
UDDR ..	1.3
TEAT ....	1.3
FAT .....	-0.003
REA .....	0.86
MARB ..	0.16
SCHB....	123

C MILES MCKEE 2103 ET

NJW 98S R117 RIBEYE 88X ET

C NOTICE ME ET

C MS OUTCROSS 0201 ET

GOLDEN OAK OUTCROSS 18U

C 8403 MS ACHV 9604A

AI bred, due 01.01.2023 to C GKB Guardian 1015 ET.

This pedigree and cow family has been one of our favorites to work with. This cow is a 3/4 sister to 2052 donor who was one of our very best. Outcross and "Achiever" on the bottom side with Miles as the sire and the guess work is out. Solid producer and bred to the record selling Guardian. After you see this cow we think you will agree this mating could be worth it all. They should blend extremely well. She has weaned six calves at 105 ratio. Daughter 0119 sells as lot 1B pick.

lot 31



**31A**

## C MILES VALORIE 2129

AHA# 44359821 | DOB 01.14.2022 | Horned Hereford Female

BW .....	3.1
WW .....	54
YW .....	86
MM .....	28
M&G .....	55
UDDR ..	1.30
TEAT ....	1.30
FAT .....	-0.003
REA .....	0.85
MARB ..	0.13
SCHB....	143

C BAR1 BAILEE VALOR 9354

HAPP BK VALOR 37C ET

BR BAILEE 1066 ET

C LADY MILES 5203

C MILES MCKEE 2103 ET

C MS OUTCROSS 0201 ET

This is a well made heifer that is sure to be a great cow someday with her background. Her mother produced Lot 1B and first calf heifer donor and with time this one could be that kind.

lot 31A

**32**ALMA  
GE-EPD

BW ..... 4.2  
 WW ..... 52  
 YW ..... 84  
 MM ..... 21  
 M&G .... 47  
 UDDR .. 1.1  
 TEAT .... 1.1  
 FAT ..... 0.027  
 REA ..... 0.48  
 MARB .. 0.02  
 SCHB.... 106

**C 5280 BAILEE 7075 ET**

AHA# 43791048 | DOB 01.11.2017 | Polled Hereford Female

**CRR 5280**

CRR 719 CATAPULT 109

CRR 435 KELLY 178

**C BAILEES MCKEE 4297 ET**

C MILES MCKEE 2103 ET

BR BAILEE 1066 ET

AI bred, due 01.01.2023 to C Key West 0065.

Here is a former show heifer that has turned into an excellent cow. She was a bred and owned heifer for Piper being out of a Miles Bailee daughter. Super sound structured and lots of look in this one. She has a cool looking Genesis daughter along side her and is bred back to Key West.



lot 32

**32A**

BW ..... 3.9  
 WW ..... 65  
 YW ..... 106  
 MM ..... 26  
 M&G .... 59  
 UDDR .. 1.10  
 TEAT .... 1.10  
 FAT ..... 0.047  
 REA ..... 0.60  
 MARB .. 0.24  
 SCHB.... 136

**C BAR ONE BAILEE GEN 2152**

AHA# 44359842 | DOB 01.24.2022 | Polled Hereford Female

**LOEWEN GENESIS G16 ET**

NJW 79Z Z311 ENDURE 173D ET

LOEWEN 77 48 MISS 344N 4RB42ET

**C 5280 BAILEE 7075 ET**

CRR 5280

C BAILEES MCKEE 4297 ET

This one will have a lot of friends by sale time. She has a great look from the side and is really clean necked and up headed. Her mother was a show heifer and this one has more look than she did. We feel this one could fall through the cracks and maybe not cost as much but be a fun project.



lot 32A

**33**ALMA  
GE-EPD

BW ..... 3.0  
 WW ..... 52  
 YW ..... 89  
 MM ..... 33  
 M&G .... 59  
 UDDR .. 1.3  
 TEAT .... 1.3  
 FAT ..... 0.067  
 REA ..... 0.59  
 MARB .. 0.14  
 SCHB.... 128

**C 5192 LADY VIC 7225**

AHA# 43791185 | DOB 01.13.2017 | Polled Hereford Female

**C 2052 4003 VIC 5192 ET**

GRANDVIEW VIC H132 23G 4003 ET

C 88X RIBEYE LADY 2052

**C 5027 HOMETOWN LADY 3267 ET**

NJW 73S W18 HOMETOWN 10Y ET

C 212 MS DOM 5027 ET

AI bred, due 01.01.2023 to C 4038 G16 Genesis 1086 ET.

Super long and extended and passes this neck and look to her offspring. She has a great udder and always raises a big stout calf. Lots of great cows in her pedigree and she is mated to 1086 who is a Genesis out of 4038 so you will add even more maternal power.



lot 33

**33A**

BW ..... 3.6  
 WW ..... 63  
 YW ..... 100  
 MM ..... 34  
 M&G .... 66  
 UDDR .. 1.40  
 TEAT .... 1.40  
 FAT ..... 0.007  
 REA ..... 0.60  
 MARB .. 0.18  
 SCHB.... 137

**C DONNA WEST 2080**

AHA# 44359776 | DOB 01.09.2022 | Polled Hereford Female

**C KEY WEST 0065**

C CJC BELLE HEIR ET

C BLACK HAWK LASS 8019

**C 5192 LADY VIC 7225**

C 2052 4003 VIC 5192 ET

C 5027 HOMETOWN LADY 3267 ET

Long spine and super extension through her front end. We would expect this one to have a tremendous udder with her maternal background. Balanced set of numbers that keep you in the game from all sides.



lot 33A

# ~ COW / CALF PAIRS ~



lot 34

<b>34</b>
AHA# 44020529   DOB 01.11.2019   Polled Hereford Female
BW ..... 6.4
WW ..... 62
YW ..... 96
MM ..... 28
M&G .... 59
UDDR .. 1.3
TEAT .... 1.2
FAT ..... -0.033
REA ..... 0.55
MARB .. -0.1
SCHB.... 105

## C CLASSY LASS 9136

AI bred, due 01.01.2023 to EFBEEF BR Validated B413.  
 This is a great made young cow that has the look you could make some great show heifers from. This one is out of American Classic who has had as many National Champions lately as any sire. Her mother is sired by Copper and out of Eye Candies mom. Nice tidy udder and she is doing a great job with this heifer calf.



lot 34A

<b>34A</b>
AHA# 44359724   DOB 01.03.2022   Polled Hereford Female
BW ..... 4.2
WW ..... 63
YW ..... 99
MM ..... 32
M&G .... 63
UDDR .. 1.40
TEAT .... 1.30
FAT ..... -0.013
REA ..... 0.72
MARB .. 0.11
SCHB.... 135

## C CLASSY BELLE 2021

This one was easy to get a great picture of. She has the look and power with all the extras. We think this could be a great project and a tremendous bred heifer to show. She blends together showing with maternal strength that you will be able to do something with after her show career.



lot 35

<b>35</b>
AHA# 44020527   DOB 01.06.2019   Polled Hereford Female
BW ..... 5
WW ..... 57
YW ..... 84
MM ..... 26
M&G .... 55
UDDR .. 1.2
TEAT .... 1.2
FAT ..... -0.003
REA ..... 0.8
MARB .. -0.05
SCHB.... 127

## C CLASSY LASS 9070

AI bred, due 02.26.2023 to ECR 628 Advance 9490 ET.  
 Long necked, neat made cow that can raise some show heifers. She is bred top and bottom to make the kind you can put a halter on. Her mother was a big boned, powerful made cow that was always a pasture favorite. This mating with 9490 will have lots of look and presence.



lot 35A

<b>35A</b>
AHA# 44359850   DOB 01.25.2022   Polled Hereford Female
BW ..... 3.1
WW ..... 59
YW ..... 91
MM ..... 31
M&G .... 115
UDDR .. 1.40
TEAT .... 1.30
FAT ..... 0.007
REA ..... 0.75
MARB .. 0.12
SCHB.... 140

## C BELLE HEIRESS 2160

Solid heifer calf here that has the ability to make a cow after her show career. This one is a problem free kind of cattle and when you study her numbers she is inbounds on all levels.



# ~ B R E D F E M A L E S ~

All bred heifers carry a confirmed heifer calf pregnancy unless noted.

**36**

AWAY  
GE-EPD

BW .....	3.9
WW .....	70
YW .....	114
MM .....	33
M&G .....	68
UDDR .....	1.1
TEAT .....	1.1
FAT .....	0.037
REA .....	0.54
MARB .....	0.48
\$CHB.....	162

## C 8037 GENESIS GAL 1049 ET

AHA# 44257576 | DOB 01.05.2021 | Polled Hereford Female

LOEWEN GENESIS G16 ET NJW 79Z Z311 ENDURE 173D ET  
 LOEWEN 77 48 MISS 344N 4RB42ET  
 BR BELLE AIR 6011  
 C CJC BELLE AIR LASS 8037 ET  
 C CJC 89T MISS MILES 4264 ET

AI bred, due 01.07.2023 to C Key West 0065, bull calf.

We decided to really spice things up in this sale! Here is the full sister to Guardian. The record selling bull at the national sale at \$320,000 for 1/4 interest. This future donor is dark red, fault free with exceptional structure. Chart topping numbers at or above the top 5% for WEPD, YEPD, MPG, CWT, IMF and \$CHB. Marbling ratio of 122. She is carrying a bull calf by Key West.

Selling half embryo interest. Terms announced on sale day.



lot 36

C CJC Belle Air Lass 8037 ET,  
dam of Lot 36.

**37**

AWAY  
GE-EPD

BW .....	2.1
WW .....	57
YW .....	86
MM .....	28
M&G .....	57
UDDR .....	1.40
TEAT .....	1.40
FAT .....	-0.003
REA .....	0.74
MARB .....	0.70
\$CHB.....	173

## C CJC 4264 VALERIE 1118 ET

AHA# 44258297 | DOB 01.10.2021 | Polled Hereford Female

EFBEEF BR VALIDATED B413 EFBEEF TFL U208 TESTED X651 ET  
 EFBEEF 4R THYRA Y865  
 C MILES MCKEE 2103 ET  
 C CJC 89T MISS MILES 4264 ET  
 TH 16G 20N GEMINI 89T

AI bred, due 01.07.2023 to C Barracuda 0114 ET, bull calf.

If you want to add a donor prospect with elite carcass traits, this is one to tie to. Supreme carcass data runs deep on both sides of this pedigree. Top 1% for IMF and \$CHB, Top 2% for REA. 146 IMF ratio, 109 REA ratio and 86% for Fat. There has been 25 head scanned by 4264 with an average IMF score of 125 and REA of 103. She has produced \$352,000 in progeny sales including Belle Heir and Real Deal as well as being Guardians grand dam. Dark red and excellent pigment.

Selling half embryo interest. Terms announced on sale day.



lot 37

C CJC 89T Miss Miles 4264 ET,  
dam of Lot 37.

**38**

AWAY  
GE-EPD

BW .....	2.4
WW .....	69
YW .....	107
MM .....	36
M&G .....	70
UDDR .....	1.4
TEAT .....	1.5
FAT .....	0.027
REA .....	0.99
MARB .....	0.97
\$CHB.....	220

## C CJC VALERIE BELLE 1101 ET

AHA# 44258291 | DOB 01.09.2021 | Polled Hereford Female

EFBEEF BR VALIDATED B413 EFBEEF TFL U208 TESTED X651 ET  
 EFBEEF 4R THYRA Y865  
 BR BELLE AIR 6011  
 C CJC BELLE AIR LASS 8140 ET  
 C CJC 89T MISS MILES 4264 ET

AI bred, due 01.07.2023 to ECR 628 Ivys Advance 8923 ET.

You want carcass without giving up growth and look? Take a look at this future donor. Rare that you get one that is in the top 3% for WEPD, top 10% YEPD, top 5% for Milk and Teat. IMF ratio of 179 and REA ratio of 119! Dam is a full sister to Guardian's mother and also Belle Heir that sports an IMF ratio of 154 and REA ratio of 124! Don't know where you find another young female with such carcass superiority.

Selling half embryo interest. Terms announced on sale day.



lot 38

C CJC Belle Air Lass 8140 ET,  
dam of Lot 38.

# ~ B R E D F E M A L E S ~



lot 39

C 105Y Lady Domino 4038,  
dam of Lot 39.

<b>39</b>
AHA# 44217631   DOB 09.02.2020   Polled Hereford Female
BW ..... 2.3
WW ..... 66
YW ..... 110
MM ..... 41
M&G .... 74
UDDR .. 1.2
TEAT .... 1.1
FAT ..... 0.037
REA ..... 0.66
MARB .. 0.22
SCHB.... 152

## C 4038 LADY ENDURE 0307 ET

AHA# 44217631 | DOB 09.02.2020 | Polled Hereford Female

NJW 79Z Z311 ENDURE 173D ET

KCF BENNETT ENCORE Z311 ET  
BW 91H 100W RITA 79Z ET

C 105Y LADY DOMINO 4038

CL 1 DOMINO 105Y  
C 88X NOTICE ME 1311 ET

AI bred, due 01.07.2023 to C 8086 Sancho 1084 ET, bull calf.

One of the elite donor prospects to sell anywhere in the land. Out of the popular Endure and an own daughter of 4038. You can't write a better pedigree and lands in the top 10% in 10 economically important traits. As we have stated numerous times 4038 and 1311 are among the breeds best donors and 0307 could easily join them. She is so powerful with exceptional body capacity, rib shape and fleshing ability. She is bred to the ground with big goggle eyes.

Selling 1/2 embryo interest. Terms announced sale day.



lot 40

C 105Y Lady Domino 4038,  
dam of Lot 40.

<b>40</b>
AHA# 44257539   DOB 12.28.2020   Polled Hereford Female
BW ..... 1.1
WW ..... 57
YW ..... 93
MM ..... 36
M&G .... 65
UDDR .. 1.2
TEAT .... 1.2
FAT ..... 0.057
REA ..... 0.35
MARB .. 0.24
SCHB.... 118

## C 4038 G16 GENESIS GAL 1005 ET

AHA# 44257539 | DOB 12.28.2020 | Polled Hereford Female

LOEWEN GENESIS G16 ET

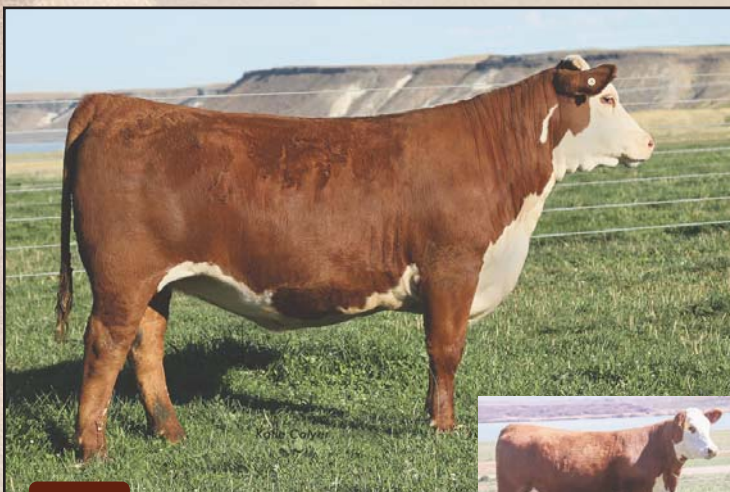
NJW 79Z Z311 ENDURE 173D ET  
LOEWEN 77 48 MISS 344N 4RB42ET

C 105Y LADY DOMINO 4038

CL 1 DOMINO 105Y  
C 88X NOTICE ME 1311 ET

AI bred, due 01.07.2023 to C Key West 0065.

An own daughter of 4038 who commanded \$97,500 in a previous sale going to Bowling Ranch, OK. Her progeny never disappoints and produces top shelf bulls and females. She has produced over \$510,000 in progeny sales thus far. Her balanced set of numbers gives you lots of flexibility for future matings. Heifer calf by Key West is an extra bonus. We have had super reports on his calves from across the country.



lot 41

C 4038 Belle Lass 8086 ET,  
dam of Lot 41.

<b>41</b>
AHA# 44257621   DOB 01.08.2021   Horned Hereford Female
BW ..... 2.1
WW ..... 55
YW ..... 86
MM ..... 29
M&G .... 56
UDDR .. 1.2
TEAT .... 1.3
FAT ..... 0.017
REA ..... 0.58
MARB .. 0.01
SCHB.... 106

## C 8086 LADY SANCHO 1095 ET

AHA# 44257621 | DOB 01.08.2021 | Horned Hereford Female

ECR 628 IVYS ADVANCE 8923 ET

H FHF ADVANCE 628 ET  
ECR MISS SENSATION 4406 ET

C 4038 BELLE LASS 8086 ET

BR BELLE AIR 6011  
C 105Y LADY DOMINO 4038

AI bred, due 01.07.2023 to Loewen Genesis G16 ET.

Make sure to study this one. She has that show ring eye appeal. You never catch her wrong. Her head comes out high off her shoulder, long and level hipped and big ribbed. A full sister to the popular Denver Champion bull Sancho that sold for \$45,000 to Bowling and King. Her mother is a top young donor by Belle Air that traces back to 4038 and 1311. The results of building cow families. Carrying a heifer calf by Genesis.

**42**ALTA  
GE-EPD

BW ..... 2.3  
 WW ..... 58  
 YW ..... 87  
 MM ..... 30  
 M&G .... 59  
 UDDR .. 1.2  
 TEAT .... 1.1  
 FAT ..... 0.017  
 REA ..... 0.84  
 MARB .. -0.05  
 \$CHB.... 120

**C LADY SPECIAL ADVANCE 0242 ET**

AHA# 44217572 | DOB 08.15.2020 | Horned Hereford Female

H FHF ADVANCE 628 ET

**ECR 628 IVYS ADVANCE 8923 ET**

ECR MISS SENSATION 4406 ET

C SPECIAL EDITION 6105 ET

**C MS SPECIAL EDITION 7344**

C KLC TK LADY STOCKMAN 4274 ET

AI bred, due 01.07.2023 to EFBEEF BR Validated B413.

A powerful made female with lots of rib, volume and fleshing ability. She is by the popular Sancho and her dam was shown by Cruz and was a class winner at the Junior National in Denver. She has went on to be a donor dam for us.



lot 42

C MS Special Edition 7344,  
dam of Lot 42.**43**ALTA  
GE-EPD

BW ..... 0.4  
 WW ..... 53  
 YW ..... 83  
 MM ..... 32  
 M&G .... 58  
 UDDR .. 1.5  
 TEAT .... 1.5  
 FAT ..... -0.013  
 REA ..... 0.41  
 MARB .. 0.22  
 \$CHB.... 119

**C BELLE HEIR LASS 0244**

AHA# 44217574 | DOB 08.21.2020 | Horned Hereford Female

BR BELLE AIR 6011

**C CJC BELLE HEIR ET**

C CJC 89T MISS MILES 4264 ET

CHURCHILL RED BULL 200Z

**C 88X RED LADY 6004**

C CANDY APPLE 4066 ET

AI bred, due 01.07.2023 to C 4038 G16 Genesis 1086 ET.

A stout made, big ribbed female with excellent pigment and short marked. She has that brood cow look with a long spine and hip. Her well balanced EPD profile gives you numerous mating options going forward in her career. Top 10% in seven economically important traits.



lot 43

C CJC Belle Heir ET,  
sire of Lot 43 & 44.**44**ALTA  
GE-EPD

BW ..... 6.7  
 WW ..... 75  
 YW ..... 120  
 MM ..... 31  
 M&G .... 69  
 UDDR .. 1.4  
 TEAT .... 1.3  
 FAT ..... -0.043  
 REA ..... 0.92  
 MARB .. 0.12  
 \$CHB.... 154

**C BELL HEIRESS 0252**

AHA# 44217581 | DOB 08.23.2020 | Polled Hereford Female

BR BELLE AIR 6011

**C CJC BELLE HEIR ET**

C CJC 89T MISS MILES 4264 ET

C DOUBLE YOUR MILES 6077 ET

**C SULL HARLEY MILES 8053 ET**

SULL TCC MS HARLEY 322 ET

AI bred, due 01.07.2023 to C Barracuda 0114 ET.

Cow power deluxe and one of the stoutest made, big bodied females in the offering. Extra bone, volume and base width. She really hits her stride and maintains femininity for how massive she is. WWR of 118, YWR 112. WEPD, YEPD, CWT Ribeye all in the top 1%. Milk top 2%, \$CHB top 3%.



lot 44

SULL TCC MS Harley 322 ET,  
maternal granddam of Lot 44.

# ~ B R E D F E M A L E S ~



lot 45

C 19D Lady Wrangler 2047,  
maternal granddam of Lot 45.



45

AHA  
GE-EPD

BW ..... 4.6  
WW ..... 67  
YW ..... 102  
MM ..... 35  
M&G .... 68  
UDDR .. 1.4  
TEAT .... 1.3  
FAT ..... -0.003  
REA ..... 0.61  
MARB .. -0.04  
SCHB.... 114

## C BELLE HEIRESS 0294

AHA# 44217619 | DOB 08.30.2020 | Horned Hereford Female

C CJC BELLE HEIR ET

BR BELLE AIR 6011

C CJC 89T MISS MILES 4264 ET

CRR 5280

C 5280 LADY WRANGLER 7260 ET

C 19D LADY WRANGLER 2047

AI bred, due 01.07.2023 to C Barracuda 0114 ET.

A big powerful massive daughter of Belle Heir. Tremendous volume and substance. Big footed and heavy boned. Lots of red and red to the ground with nice pigment. Belle Heir daughters are making great momma cows. Top 4% for WEPD, top 10% YEPD Milk, udder and ribeye. She traces back to 2047 that was a great donor female for us.



lot 46

46

AHA  
GE-EPD

BW ..... 1.4  
WW ..... 39  
YW ..... 64  
MM ..... 18  
M&G .... 38  
UDDR .. 1.4  
TEAT .... 1.3  
FAT ..... -0.013  
REA ..... 0.53  
MARB .. 0.22  
SCHB.... 125

## C BELLE HEIRESS 0334

AHA# 44217651 | DOB 09.17.2020 | Polled Hereford Female

C CJC BELLE HEIR ET

BR BELLE AIR 6011

C CJC 89T MISS MILES 4264 ET

C MILES MCKEE 2103 ET

C SULL HARLEYS MILES 7002 ET

LCC TWO TIMIN 438 ET

AI bred, due 01.07.2023 to Loewen Genesis G16 ET.

A moderate framed female with plenty of rib shape. Calving ease deluxe being in the top 10% for CED and top 20% for BEPD. Udder score in the top 10%. Excellent carcass merit being in the top 15% for both IMF and REA and top 20% for \$CHB. Double bred to Miles McKee. Heifer calf by Genesis will add performance.



lot 47

C 1311 5280 Lady 6018 ET,  
dam of Lot 47.

47

AHA  
GE-EPD

BW ..... 3.3  
WW ..... 65  
YW ..... 98  
MM ..... 29  
M&G .... 62  
UDDR .. 1.2  
TEAT .... 1.2  
FAT ..... 0.037  
REA ..... 0.66  
MARB .. 0.19  
SCHB.... 133

## C 6018 GENESIS LASS ET

AHA# 44217731 | DOB 09.02.2020 | Polled Hereford Female

LOEWEN GENESIS G16 ET

NJW 79Z Z311 ENDURE 173D ET

LOEWEN 77 48 MISS 344N 4RB42ET

CRR 5280

C 1311 5280 LADY 6018 ET

C 88X NOTICE ME 1311 ET

AI bred, due 01.07.2023 to C CJC Belle Heir ET.

One of the real fault free females in the offering. She has a neat design through her front end, long and level hipped with a great side profile look. Great teat and udder placement. Sired by the ever popular Genesis and her dam is a full sister to such notable sires as Double Your Miles, Special Edition, Diversified and Spot On. Great EPD profile especially for growth and carcass.

**48**ALTA  
GE-EPD

BW ..... 5.8  
 WW ..... 65  
 YW ..... 105  
 MM ..... 27  
 M&G .... 59  
 UDDR .. 1.2  
 TEAT .... 1.0  
 FAT ..... 0.017  
 REA ..... 0.81  
 MARB .. 0.27  
 \$CHB.... 161

**C GENESIS LASS 0343**

AHA# 44217660 | DOB 09.23.2020 | Polled Hereford Female

**LOEWEN GENESIS G16 ET**

NJW 79Z Z311 ENDURE 173D ET  
 LOEWEN 77 48 MISS 344N 4RB42ET  
 CRR 5280  
 C 88X NOTICE ME 1311 ET

**VMHG NOTICABLE E501 ET**

AI bred, due 01.07.2023 to C 4038 Bell Air 8108 ET.

Typical Genesis with 100% pigment and dark red. Long bodied and extended through her front end. Extreme femininity and extra long and clean fronted. Excellent growth and carcass numbers. Dam is a full sister to Double Your Miles, Special Edition, Diversified and Spot On. Grand dam is the unmatched donor 1311.



lot 48

C 88X Notice Me 1311 ET,  
granddam of Lot 48.**49**ALTA  
GE-EPD

BW ..... 2.4  
 WW ..... 59  
 YW ..... 94  
 MM ..... 22  
 M&G .... 52  
 UDDR .. 1.4  
 TEAT .... 1.3  
 FAT ..... 0.037  
 REA ..... 0.68  
 MARB .. 0.22  
 \$CHB.... 119

**C 8105 GENESIS LASS 1072 ET**

AHA# 44257599 | DOB 01.07.2021 | Polled Hereford Female

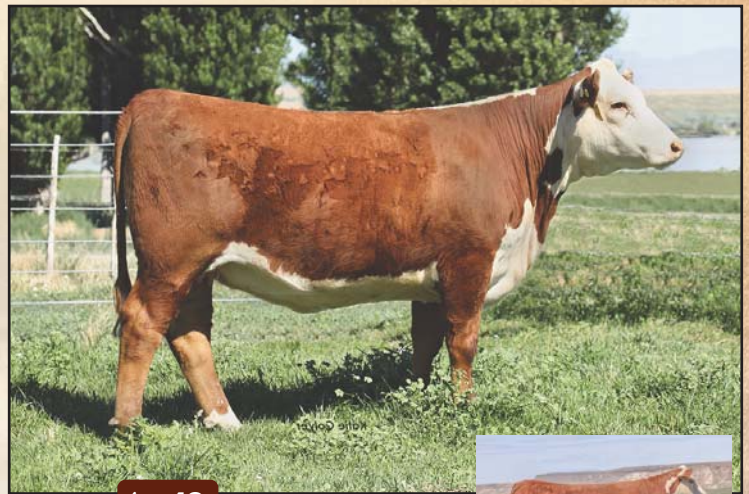
**LOEWEN GENESIS G16 ET**

NJW 79Z Z311 ENDURE 173D ET  
 LOEWEN 77 48 MISS 344N 4RB42ET  
 C DOUBLE YOUR MILES 6077 ET  
 C BAR1 BAILEES DOUBLE MILES ET  
 BR BAILEE 1066 ET

**C BAR1 BAILEES DOUBLE MILES ET**

AI bred, due 01.07.2023 to C Key West 0065.

A very eye catching female and elegant through her front end. Her dam was Champion Female at Fort Worth after selling for \$99,000 in our fall sale as a heifer calf. Excellent EPD values with top CED, high growth. Top 15% for teat and udder, IMF and Ribeye. Carrying a heifer calf by the popular young Key West bull.



lot 49

C Bar1 Bailees Double Miles ET,  
dam of Lot 49.**50**ALTA  
GE-EPD

BW ..... 2.9  
 WW ..... 63  
 YW ..... 97  
 MM ..... 32  
 M&G .... 64  
 UDDR .. 1.1  
 TEAT .... 1.2  
 FAT ..... 0.027  
 REA ..... 0.57  
 MARB .. 0.42  
 \$CHB.... 149

**C 88X GENESIS 1094**

AHA# 44257620 | DOB 01.08.2021 | Polled Hereford Female

**LOEWEN GENESIS G16 ET**

NJW 79Z Z311 ENDURE 173D ET  
 LOEWEN 77 48 MISS 344N 4RB42ET  
 NJW 98S R117 RIBEYE 88X ET  
 C 95T 88X RIBEYE LADY 4225 ET  
 RPH MAIDEN 95T

**C 95T 88X RIBEYE LADY 4225 ET**

AI bred, due 01.07.2023 to C 4038 Bell Air 8108 ET.

A classy designed female with tremendous pigment and a big red spot on her cheek. Long and level down her top and pretty fronted. An EPD profile that is hard to find a hole in. Top 15% for WEPD, CWT, Milk and Ribeye, top 20% YEPD, top 4% \$CHB and top 3% IMF. She had an IMF ratio of 169! Her dam 4225 is the smallest teated cow we have ever seen. Love the maternal side of this pedigree.



lot 50

RPH Maiden 95T,  
granddam of Lot 50.

# ~ B R E D F E M A L E S ~



lot 51

C 95T Lady Trust 4212 ET,  
maternal granddam of Lot 51.

<b>51</b>
<b>AHA GE-EPD</b>
BW ..... 1.5
WW ..... 65
YW ..... 108
MM ..... 34
M&G .... 67
UDDR .. 1.3
TEAT .... 1.4
FAT ..... 0.057
REA ..... 0.59
MARB .. 0.22
SCHB.... 122

## C G16 GENESIS GAL 1196

AHA# 44257699 | DOB 02.01.2021 | Polled Hereford Female

LOEWEN GENESIS G16 ET  
C 4212 CANADA 7366 ET

NJW 79Z Z311 ENDURE 173D ET  
LOEWEN 77 48 MISS 344N 4RB42ET  
WLB MR CANADA 10Z 15B  
C 95T LADY TRUST 4212 ET

AI bred, due 01.07.2023 to C Barracuda 0114 ET.

It is hard to find a much better set of balanced EPD's than this gal has. Top 25% CED, 20% BEPD, 10% WEPD, YEPD, Milk, Ribeye. 15% for Teat and IMF. A stylish female with lots of pigment. Moderate but stout. Grandmother is a full sister to Wildcat.



lot 52

<b>52</b>
<b>AHA GE-EPD</b>
BW ..... 5.2
WW ..... 89
YW ..... 140
MM ..... 33
M&G .... 77
UDDR .. 1.2
TEAT .... 1.2
FAT ..... 0.037
REA ..... 0.84
MARB .. 0.61
SCHB.... 201

## G GENESIS LASS 1222

AHA# 44257722 | DOB 02.20.2021 | Polled Hereford Female

LOEWEN GENESIS G16 ET  
C LADY BELLE 9165

NJW 79Z Z311 ENDURE 173D ET  
LOEWEN 77 48 MISS 344N 4RB42ET  
BR BELLE AIR 6011  
C 144B PACKER LASS 7078

AI bred, due 01.07.2023 to C 4038 Bell Air 8108 ET.

Study the track record this female has produced. She sports a WWR of 122, YWR of 107. IMF score of 184, and Ribeye ratio of 107. Enviably being in the top 1% for WEPD, YEPD, MPG, IMF, REA and \$CHB! Big goggle eyes and extra dark red with great extension and femininity.



lot 53

C Black Hawk Lass 8013,  
dam of Lot 53.

<b>53</b>
<b>AHA GE-EPD</b>
BW ..... 2.9
WW ..... 59
YW ..... 83
MM ..... 36
M&G .... 66
UDDR .. 1.2
TEAT .... 1.1
FAT ..... -0.003
REA ..... 0.61
MARB .. 0.08
SCHB.... 121

## C LADY PURE GOLD 1210

AHA# 44257711 | DOB 02.09.2021 | Horned Hereford Female

C -S PURE GOLD 98170  
C BLACK HAWK LASS 8013

C GOLD RUSH 1ET  
C MS DOM 93218 1ET  
C BLACK HAWK DOWN ET  
C 1008 MILKY WAY 6133 ET

AI bred, due 01.07.2023 to C 4038 G16 Genesis 1086 ET.

We brought Pure Gold back into the program to add some muscle, bone, and great feet. Those used to be a given in Hereford cattle but not so much today. This female is out of one of our best young donor females that goes back to Milky Way. One of our favorite females. She carries a heifer calf by 1086. A young Genesis son by 4038 that has exceptional carcass data.

**54**AH-A  
GE-EPD

BW ..... 0.5  
 WW ..... 52  
 YW ..... 74  
 MM ..... 33  
 M&G .... 59  
 UDDR .. 1.3  
 TEAT .... 1.4  
 FAT ..... 0.007  
 REA ..... 0.42  
 MARB .. 0.08  
 \$CHB.... 97

**C 8108 BELLE AIR LASS 1013**

AHA# 44257546 | DOB 01.03.2021 | Horned Hereford Female

**C 4038 BELL AIR 8108 ET**BR BELLE AIR 6011  
C 105Y LADY DOMINO 4038**C 88X RIBEYE LADY 3156**NJW 98S R117 RIBEYE 88X ET  
C 860 LADY DOM 1109

AI bred, due 01.07.2023 to C Barracuda 0114 ET

A moderate framed, freckle faced heifer with 100% pigment. Double bred 88X and a pedigree stacked with elite females. Two maternal sisters in the herd and her dam is one of the best milking females and still maintains a great udder at nine-years-old.



lot 54

C 4038 Bell Air 8108 ET,  
sire of Lot 54 & 55.**55**AH-A  
GE-EPD

BW ..... 2.8  
 WW ..... 72  
 YW ..... 116  
 MM ..... 55  
 M&G .... 91  
 UDDR .. 1.5  
 TEAT .... 1.5  
 FAT ..... 0.007  
 REA ..... 0.75  
 MARB .. 0.18  
 \$CHB.... 135

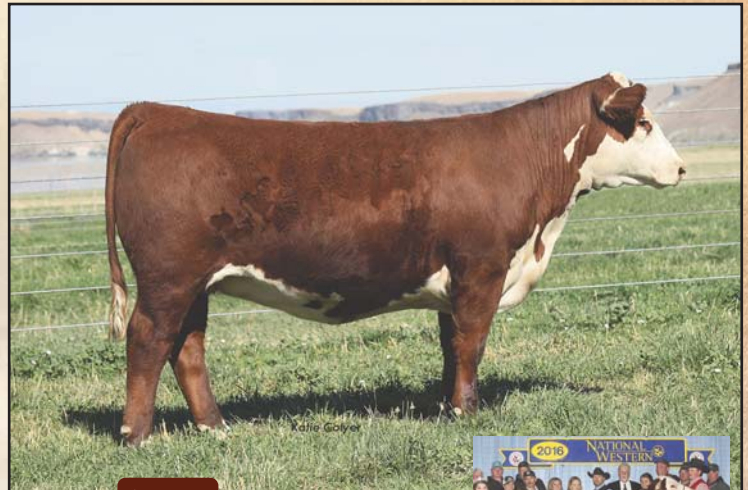
**C BAR1 8108 CANDY 1132**

AHA# 44257650 | DOB 01.12.2021 | Polled Hereford Female

**C 4038 BELL AIR 8108 ET**BR BELLE AIR 6011  
C 105Y LADY DOMINO 4038**C BAR1 CANDY 9228 ET**WLB MR CANADA 10Z 15B  
C CANDY CANE 4030 ET

AI bred, due 01.07.2023 to EFBEEF BR Validated B413.

A fancy made feminine female that commands your attention when you enter the pen. Clean fronted, well balanced with lots of pigment. Big bodied, moderate framed and exceptional set of EPD's. Top 2% for WEPD, YEPD and REA. Top 1% for Milk, top 15% \$CHB, top 3% teat and Top 5% Udder. A pedigree loaded with exceptional females and these 8108 daughters are the real deal. She should be one of the real popular females sale day.



lot 55

C Candy Cane 4030 ET,  
maternal granddam of Lot 55.**56**AH-A  
GE-EPD

BW ..... 6.5  
 WW ..... 57  
 YW ..... 88  
 MM ..... 33  
 M&G .... 61  
 UDDR .. 1.2  
 TEAT .... 1.3  
 FAT ..... -0.043  
 REA ..... 0.94  
 MARB .. -0.07  
 \$CHB.... 127

**C LADY DIVERSE 0306**

AHA# 44217630 | DOB 09.02.2020 | Polled Hereford Female

**C 5280 DIVERSIFIED 6121 ET**CRR 5280  
C 88X NOTICE ME 1311 ET**SULL DIANA'S MILES 5465 ET**C MILES MCKEE 2103 ET  
TCC MS DIANA 01

AI bred, due 01.07.2023 to C 4038 Bell Air 8108 ET.

This one is a must see and one of the real standout females in this sale. She is long fronted big hipped and powerful made. She has the pedigree that will produce show cattle at a high level. National Champions fill up her immediate pedigree. Double bred Notice Me. She is mated to 8108 which will bring the BW down a bunch and add maternal quality. This should be a perfect first time mating.



lot 56

SULL Diana 5355C ET,  
full sister to dam of Lot 56

# ~ B R E D F E M A L E S ~



lot 57

C 440P Hometown 3203 ET,  
sire of Lot 57.



57

BW	4.7
WW	62
YW	98
MM	27
M&G	58
UDDR	1.2
TEAT	1.2
FAT	0.037
REA	0.36
MARB	0.48
SCHB	134

## C 3203 REGAL LASS 1058

AHA# 44257585 | DOB 01.06.2021 | Horned Hereford Female

C 440P HOMETOWN 3203 ET

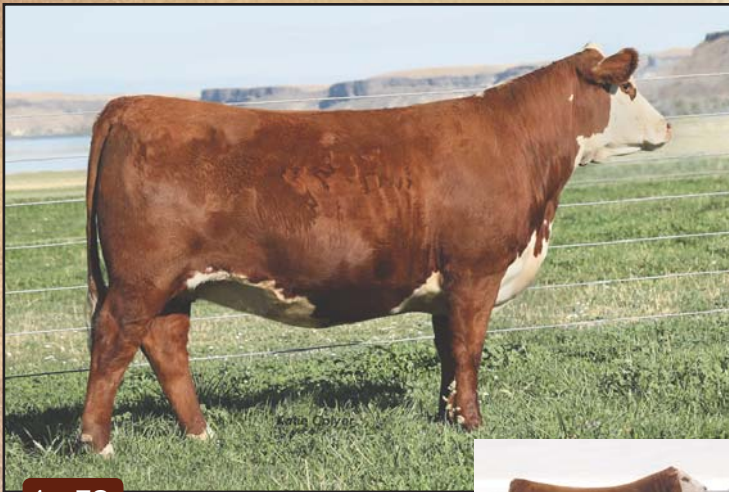
NJW 73S W18 HOMETOWN 10Y ET  
CL 1 DOMINETTE 440P 1ET

C 88X REGAL LASS 8008

NJW 98S R117 RIBEYE 88X ET  
C REGAL LASS 6255

AI bred, due 01.07.2023 to C Key West 0065.

This big volume female excels in all performance traits. She has lots of base width and bone. She is not the freak fronted show heifer but will produce those top performing useful cattle. WWR of 117, YWR 103, IMF ratio of 112, Ribeye ratio of 105. Ranks in the top 2% for IMF and 10% for \$CHB. Her sire had an IMF ratio of 173 when he sold to Ledbetter, TX and traces back to the famous 440 cow from Coopers.



lot 58

C 4088 Wildcat 7270 ET,  
sire of Lot 58.



58

BW	2.3
WW	57
YW	85
MM	35
M&G	64
UDDR	1.4
TEAT	1.6
FAT	-0.043
REA	0.41
MARB	0.36
SCHB	130

## C 7270 ENCORE LASS 0300

AHA# 44217624 | DOB 08.31.2020 | Polled Hereford Female

C 4088 WILDCAT 7270 ET

C ETF WILDCAT 4248 ET  
C 88X RIBEYE LADY 4088

C 5219 ENCORE LASS 6271 ET

KCF BENNETT ENCORE Z311 ET  
C NOTICE ME TOO ET

AI bred, due 01.07.2023 to C 8086 Sancho 1084 ET.

A ring eyed, freckle faced female. Great eye appeal. Love to see the udder development she is showing. Teat score in the top 1%, Udder in the top 10% with IMF in the top 4% and \$CHB in the top 15%. Her pedigree is loaded with top females and traces back to Notice Me on the bottom side. Don't overlook this female. She has the maternal look with power and performance.



lot 59

C 88X Red Lady 6013,  
dam of Lot 59.



59

BW	0.6
WW	65
YW	105
MM	44
M&G	76
UDDR	1.4
TEAT	1.5
FAT	0.037
REA	0.49
MARB	0.11
SCHB	113

## C 6013 FRONTIER LASS 0338 ET

AHA# 44217655 | DOB 09.21.2020 | Polled Hereford Female

TH FRONTIER 174E

TH 403A 475Z PIONEER 358C ET  
FTF TRUSTING LADY 312A

C 88X RED LADY 6013

CHURCHILL RED BULL 200Z  
C 95T 88X RIBEYE LADY 4208 ET

AI bred, due 01.07.2023 to BR Belle Air 6011.

A big bodied and stout made Frontier female. From what we have seen the Frontier daughters are making excellent females. Great EPD profile being in the top 10% in numerous traits and a great spread from birth to growth. She has a little extra white up front but also has 100% pigment. Great uddered females run deep in this pedigree. Dam produced the top selling bull as a first calf heifer at \$60,000 to Barrilleaux, TX.



**60**AAHA  
GE-EPD

BW ..... 3.9  
 WW ..... 65  
 YW ..... 100  
 MM ..... 36  
 M&G .... 69  
 UDDR .. 1.1  
 TEAT .... 1.2  
 FAT ..... -0.003  
 REA ..... 0.37  
 MARB .. 0.26  
 \$CHB.... 124

**C 942G DOMINETTE 1016**

AHA# 44257549 | DOB 01.03.2021 | Horned Hereford Female

CL 1 DOMINO 942G

CL 1 DOMINO 7131E 1ET  
 CL 1 DOMINETTE 664D 1ET  
 JCS 240 FLINTLOCK 5815  
 CHURCHILL LADY 0104X

BAR S LHF 0104 MISS 5815 905ET

AI bred, due 01.07.2023 to C CJC Belle Heir ET.

A yellow colored daughter of the popular Cooper bred sale topper 942G. Very feminine and angular. WEPD and IMF in the top 10%, Milk top 3%, \$CHB top 25%. Dam is a moderate framed female with a WWR of 105 and a perfect udder.



lot 60

CL 1 Domino 942G,  
sire of Lot 60.**61**AAHA  
GE-EPD

BW ..... 5.2  
 WW ..... 68  
 YW ..... 111  
 MM ..... 23  
 M&G .... 57  
 UDDR .. 1.2  
 TEAT .... 1.1  
 FAT ..... -0.043  
 REA ..... 0.81  
 MARB .. 0.06  
 \$CHB.... 146

**C FANTASIA 1040**

AHA# 44257568 | DOB 01.04.2021 | Horned Hereford Female

C FANTASTIC 2165

HH ADVANCE 026K 1ET  
 C FANTASIA 0040  
 KCF BENNETT ENCORE Z311 ET

BK DOCTORS ORDERS 6052D

AI bred, due 01.07.2023 to C 4038 Bell Air 8108 ET.

We reached back and used the former Denver Champion Fantastic and was pleased with the results. This one is big bodied with good pigment and red neck. She is typical of some of the older breeding cattle with extra bone, muscle pattern, great feet and legs and structure. She is nice fronted and is quite feminine for the extra muscle and body length she displays. Top 5% for WEPD, YEPD, CWT, Ribeye and \$CHB.



lot 61

C Fantastic 2165,  
sire of Lot 61.**62**AAHA  
GE-EPD

BW ..... 5.1  
 WW ..... 69  
 YW ..... 109  
 MM ..... 36  
 M&G .... 70  
 UDDR .. 1.2  
 TEAT .... 1.1  
 FAT ..... -0.033  
 REA ..... 0.66  
 MARB .. 0.05  
 \$CHB.... 131

**C 4129 CANADA LASS 1236**

AHA# 44257730 | DOB 03.08.2021 | Polled Hereford Female

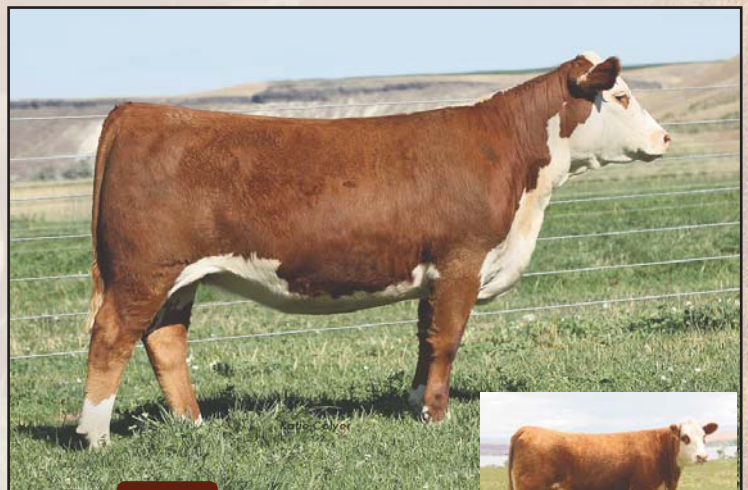
WLB MR CANADA 10Z 15B

WLB WINCHESTER ANSER 90X 10Z  
 REMITALL GRAVES JUNO 204S  
 NJW 98S R117 RIBEYE 88X ET  
 C 88X 7050 RIBEYE LADY 4129 ET  
 C MS PURE ADV 7050 ET

C 88X 7050 RIBEYE LADY 4129 ET

AI bred, due 01.07.2023 to C 4038 Bell Air 8108 ET.

The youngest female in the bred heifer division. A nice patterned excellent structured female with a moderate frame and 100% pigment. Don't overlook the fact that she carries a WEPD and Milk in the top 3%, YEPD and Ribeye top 5, CWT top 10 and \$CHB top 15%. Mr Canada produces excellent uddered females. Dam is a full blood sister to Miles McKee that is co-owned with Bowling Ranch, OK.



lot 62

C 88X 7050 Ribeye Lady  
4129 ET, dam of Lot 62.

# ~ ANGUS COW / CALF PAIRS ~



lot 63

## 63 ANGUS

BW	.....	2.9
WW	.....	70
YW	.....	127
MM	.....	25
CEM	.....	7
MATW	..	88
SC	.....	0.62
WS	.....	59
FS	.....	78
GS	.....	22
BS	.....	100

### CCC RENOWN RITA 0125

AAA# 19778470 | DOB 01.17.2020 | Angus Female

S A V RENOWN 3439

CCC GRANITE 7004

RITO 707 OF IDEAL 3407 7075  
S A V BLACKCAP MAY 4136  
CONNELLY BLACK GRANITE  
CCC PRODUCT LADY 5001

AI bred, due 01.06.2023 to Poss Rawhide.

This is a great pair and this first calf heifer is an ideal cow. Holds her flesh well while raising this powerful heifer calf. These Renown daughter are a hot commodity because of their extra maternal strength and power. She is square uddered and big hipped with extra rib and volume. Bred back to Poss Rawhide.



lot 63A

## 63A

BW	.....	-0.5
WW	.....	64
YW	.....	116
MM	.....	19
CEM	.....	13
MATW	..	92
SC	.....	0.62
WS	.....	52
FS	.....	94
GS	.....	49
BS	.....	144

### C ALTERNATIVE ANN 2007

AAA# 20365940 | DOB 12.28.2021 | Angus Female

BALDRIDGE ALTERNATIVE E125

CCC RENOWN RITA 0125

POSS EASY IMPACT 0119  
BALDRIDGE BLACKBIRD A030  
S A V RENOWN 3439  
CCC GRANITE 7004

When planning this mating we knew on paper that the calf out of this Renown first calf heifer would be special. Lot 63A has been a favorite since she hit the ground. She has the extra rib, mass and hip that her maternal cow line are known for, but its her presence and look that will make it easy for her to capture attention early in her show career and as a big bred.



lot 64

## 64

BW	.....	0.5
WW	.....	62
YW	.....	109
MM	.....	29
CEM	.....	15
MATW	..	57
SC	.....	0.97
WS	.....	65
FS	.....	91
GS	.....	29
BS	.....	120

### CCC GRANITE LADY 6110

AAA# 18513121 | DOB 01.26.2016 | Angus Female

CONNELLY BLACK GRANITE

CCC PRODUCT LADY 4109

CONNELLY CONSENSUS 7229  
EURA ELGA OF CONANGA 9109  
CONNELLY FINAL PRODUCT  
CCC PIONEER LADY 2015

AI bred, due 02.22.2023 to Connelly Treasure 558H.

If you believe the best cows are the ones that have the best calves then look at this pair. This cow is a big time producer and this calf just keeps turning the crank. If this isn't the heaviest heifer calf at weaning time we will be surprised. This mating with Treasure 558H should add plenty of IMF and this mating should really fire.



lot 64A

## 64A

BW	.....	-0.4
WW	.....	63
YW	.....	112
MM	.....	20
CEM	.....	15
MATW	..	76
SC	.....	0.80
WS	.....	54
FS	.....	103
GS	.....	53
BS	.....	156

### C ALTERNATIVE ANN 2057

AAA# 20365983 | DOB 01.05.2022 | Angus Female

BALDRIDGE ALTERNATIVE E125

CCC GRANITE LADY 6110

POSS EASY IMPACT 0119  
BALDRIDGE BLACKBIRD A030  
CONNELLY BLACK GRANITE  
CCC PRODUCT LADY 4109

From all angles this Alternative heifer is a standout. With the extra dimension on a maternal build that she has to offer, she can be successful in the show ring or quickly take your breeding program to the next level with her as your next donor. An added bonus is her EPD profile, balanced and backed by a genetic lineup of performers. You will want to be all in on this one when the gavel drops.

**65****CCC PLAYBOOK PAULA 0130**

AAA# 19778474 | DOB 01.19.2020 | Angus Female

BW ..... 1.0  
 WW ..... 60  
 YW ..... 107  
 MM ..... 30  
 CEM .... 13  
 MATW.. 30  
 SC ..... 0.87  
 WS ..... 60  
 FS ..... 81  
 GS ..... 52  
 BS ..... 133

TEX PLAYBOOK 5437

BASIN PAYWEIGHT 1682  
 RITA 1C43 OF 9M26 COMPLETE  
 CONNEALY FINAL PRODUCT  
 CCC UPSHOT LADY 3033

CCC PRODUCT LADY 6133

AI bred, due 01.06.2023 to Tehama Tahoe B767.

We wish they could all be made like this and have a set of numbers that keep them marketable. Trying to raise sound fault free cattle with a balanced set of numbers can be challenging but this first calf heifer makes it look easy. This one is bred back the same way and as you can see this mating with Tahoe is a great match not only on paper but in person.



lot 65

**65A****C TAHOE TINA 2012**

AAA# 20365945 | DOB 12.29.2021 | Angus Female

BW ..... 0.1  
 WW ..... 68  
 YW ..... 119  
 MM ..... 31  
 CEM .... 11  
 MATW.. -  
 SC ..... -  
 WS ..... 66  
 FS ..... 85  
 GS ..... 60  
 BS ..... 145

TEHAMA TAHOE B767

TEHAMA UPWARD Y238  
 TEHAMA MARY BLACKBIRD Y684  
 TEX PLAYBOOK 5437  
 CCC PRODUCT LADY 6133

CCC PLAYBOOK PAULA 0130

Solid maternal numbers on this Playbook granddaughter that ranks in the top 20% for CEM and 15% for Milk. Out in the pasture you are drawn to her impressive squareness and bold rib shape, packed on a moderate frame. We liked how this mating turned out and rebred her dam to Tahoe in March.



lot 65A

**66**

ANGUS

**CCC BANKROLL 9150**

AAA# 19559785 | DOB 08.24.2019 | Angus Female

BW ..... -0.6  
 WW ..... 59  
 YW ..... 109  
 MM ..... 26  
 CEM .... 5  
 MATW.. 77  
 SC ..... 1.28  
 WS ..... 56  
 FS ..... 95  
 GS ..... 34  
 BS ..... 129

BARSTOW BANKROLL B73

BARSTOW CASH  
 BARSTOW MISS DIANNA Z25  
 CONNEALY BLACK GRANITE  
 CCC MISS TRAVELER 4075

CCC GRANITE GAL 5085

AI bred, due 01.06.2023 to Stevenson Security.

Moderate framed big hipped young cow here very sound on her feet and legs and has a good looking heifer calf. Bankroll and Black Granite have been a great match for us and have also produced some of our top selling bulls. This is just a four year old with a big future. She is bred to Security this time and his calves were some of our most popular sires in the sale this spring. Security is a son of Alternative who has the two leadoff heifer calves in this section.



lot 66

**66A****C RITA RAWHIDE 2038**

AAA# 20365966 | DOB 01.03.2022 | Angus Female

BW ..... 0.2  
 WW ..... 72  
 YW ..... 125  
 MM ..... 27  
 CEM .... 8  
 MATW.. 75  
 SC ..... 1.25  
 WS ..... 68  
 FS ..... 113  
 GS ..... 57  
 BS ..... 170

POSS RAWHIDE

POSS MAVERICK  
 POSS BLUEBLOOD 6502  
 BARSTOW BANKROLL B73  
 CCC GRANITE GAL 5085

CCC BANKROLL 9150

This is a result of our first matings with Rawhide. This pairing made one that is square from top to bottom. Her added advantage is that she is unique in her extension from the side. Couple that with a high performer on paper, you have one with a bold future.



lot 66A

# ~ ANGUS COW / CALF PAIRS ~



lot 67

**67**  
ANGUS

BW	.....	2.0
WW	.....	60
YW	.....	102
MM	.....	30
CEM	.....	9
MATW..		35
SC	.....	1.77
WS	.....	63
FS	.....	67
GS	.....	54
BS	.....	121

## CCC CONCENSUS EX LADY 6136

AAA# 18513145 | DOB 02.15.2016 | Angus Female  
 EXAR CONSENSUS 2746B CONNEALY CONSENSUS 7229  
 BASIN JOY 566T  
 CCC BISMARCK LADY 2010 S A V BISMARCK 5682  
 CCC THUNDER LADY 0114

AI bred, due 01.08.2023 to Tehama Tahoe B767.

This has been a standout cow since she was a first calf heifer. Her mother 2010 was one of the first Angus cows we flushed because she was such a unique piece. As you can see she is full of Maternal power with Bismarck and Thunder on the bottom and the famous Joy 566T cow on the top side. She is carrying a pregnancy to Tahoe who has been an extremely popular sire.



lot 67A

**67A**

BW	.....	-0.8
WW	.....	59
YW	.....	104
MM	.....	29
CEM	.....	11
MATW..		57
SC	.....	1.79
WS	.....	61
FS	.....	82
GS	.....	55
BS	.....	137

## C CRACKERJACK JILL 2027

AAA# 20365957 | DOB 01.01.2022 | Angus Female  
 MUSGRAVE CRACKERJACK MUSGRAVE 316 STUNNER  
 MUSGRAVE RITO JET A649  
 CCC CONCENSUS EX LADY 6136 EXAR CONSENSUS 2746B  
 CCC BISMARCK LADY 2010

A low input future brood cow here. Stands in the top 15% for her calving ease and birthweight predictors. We have two Crackerjack offerings in this sale and think her bloodlines can make females that have long careers in a herd. We like that she is big bodied and how you can step any direction around her and see that her boldness starts at the ground.



lot 68

**68**  
ANGUS

BW	.....	2.9
WW	.....	63
YW	.....	109
MM	.....	34
CEM	.....	8
MATW..		36
SC	.....	1.44
WS	.....	67
FS	.....	93
GS	.....	52
BS	.....	145

## CCC LADY PLAYBOOK 9154

AAA# 19559787 | DOB 08.15.2019 | Angus Female  
 TEX PLAYBOOK 5437 BASIN PAYWEIGHT 1682  
 RITA 1C43 OF 9M26 COMPLETE  
 CCC GAME TIME 7065 GAFFNEY GAME TIME 370  
 CCC UPSHOT LADY 4087

AI bred, due 01.06.2023 to Sitz Stellar 726D.

On her second calf this young Playbook daughter has really done an excellent job. We love the look of this calf and this cow has been able to put so much hip and look in her. Sitz Stellar should be a great mating for this one as well especially because of her extra strength in the carcass department and his ability to add so much real work function to one with his breed leading feet scores.



lot 68A

**68A**

BW	.....	1.0
WW	.....	63
YW	.....	112
MM	.....	31
CEM	.....	10
MATW..		58
SC	.....	1.62
WS	.....	66
FS	.....	96
GS	.....	54
BS	.....	151

## C CRACKERJACK JILL 2169

AAA# 20366080 | DOB 02.13.2022 | Angus Female  
 MUSGRAVE CRACKERJACK MUSGRAVE 316 STUNNER  
 MUSGRAVE RITO JET A649  
 CCC LADY PLAYBOOK 9154 TEX PLAYBOOK 5437  
 CCC GAME TIME 7065

It is impossible to walk among the 10 Angus pairs slated for our sale and not find the potential in this Crackerjack daughter. Out and away from her she has an elite look that starts with front-end refinement and femininity and ends with an attractive hip and rear leg. She has all the cool components that could make her competitive in the hands of any junior.

**69**

ANGUS

BW ..... 0.9  
 WW ..... 63  
 YW ..... 110  
 MM ..... 26  
 CEM ..... 14  
 MATW.. 27  
 SC ..... 0.09  
 WS ..... 66  
 FS ..... 93  
 GS ..... 24  
 BS ..... 118

**CCC PLAYBOOK PAULA 0100**

AAA# 19778452 | DOB 01.12.2020 | Angus Female

TEX PLAYBOOK 5437

BASIN PAYWEIGHT 1682  
 RITA 1C43 OF 9M26 COMPLETE  
 VERMILION X FACTOR  
 CCC MS DIRECTION 5049

CCC LADY X 1093

AI bred, due 01.06.2023 to Tehama Tahoe B767.

A first calf heifer that really blended well with True North. If you like clean fronted long necked ones this is a great pair. So attractive and feminine through her front third and really has a presence in the pen. Lots of CED and spread to a year.



lot 69

**69A**

BW ..... 0.4  
 WW ..... 60  
 YW ..... 111  
 MM ..... 29  
 CEM ..... 12  
 MATW.. 21  
 SC ..... 0.75  
 WS ..... 60  
 FS ..... 77  
 GS ..... 45  
 BS ..... 123

**C TRUE NORTH TESS 2101**

AAA# 20366018 | DOB 01.08.2022 | Angus Female

SQUARE B TRUE NORTH 8052

S A V RAINFALL 6846  
 ELBANNA OF CONANGA 1209  
 TEX PLAYBOOK 5437  
 CCC LADY X 1093

CCC PLAYBOOK PAULA 0100

Just a quick look at the EPD profile on this True North daughter and you see maternal practicality. Go a bit deeper and her bloodlines scream low input, big bodied, cow makers. We think while she is made to be a cow, she looks like a lady with the added refinement and sharpness that grabs attention in the ring.



lot 69A

**70**

BW ..... 2.7  
 WW ..... 63  
 YW ..... 107  
 MM ..... 31  
 CEM ..... 13  
 MATW.. 38  
 SC ..... 1.43  
 WS ..... 84  
 FS ..... 65  
 GS ..... 87  
 BS ..... 129

**CCC SPUR DD LASS 8093**

AAA# 19194923 | DOB 01.14.2018 | Angus Female

CONNELY SPUR

CONNELY STIMULUS 8419  
 JAZZA OF CONANGA 8594  
 CONNEALY BLACK GRANITE  
 CCC LADY ANSWER 3050

CCC GRANITE LADY 5051

AI bred, due 01.08.2023 to Sitz Resilient 10208.

This will be a popular cow sired by Spur. Tons of maternal power in this one with some of Connealy's most proven bulls like Spur, Black Granite, Right Answer and Thunder backing her up. This cow is stout hipped and really square footed with a great heifer at side. This mating with the popular Sitz Resilient should really be special.



lot 70

**70A**

BW ..... 0.4  
 WW ..... 58  
 YW ..... 106  
 MM ..... 30  
 CEM ..... 13  
 MATW.. 36  
 SC ..... 1.32  
 WS ..... 58  
 FS ..... 90  
 GS ..... 45  
 BS ..... 134

**C KING HEIRESS 2087**

AAA# 20366006 | DOB 01.07.2022 | Angus Female

CONNELY KING AIR

LD CAPITALIST 316  
 PASHA OF CONANGA 557P  
 CONNEALY SPUR  
 CCC GRANITE LADY 5051

CCC SPUR DD LASS 8093

King Air daughters are always high selling fan favorites. Lot 70A is no exception as she is smooth patterned, super productive in the middle, and big hipped. On paper she has all the useful tools to progress your breeding program.



lot 70A

# ~ ANGUS COW/ CALF PAIRS ~



lot 71

## 71

BW .....	-0.2
WW .....	61
YW .....	103
MM .....	23
CEM .....	15
MATW..	28
SC .....	0.24
WS .....	64
FS .....	75
GS .....	44
BS .....	119

### CCC YETI LASS 8058

AAA# 19195140 | DOB 01.09.2018 | Angus Female

PAHR YETI B5

BASIN PAYWEIGHT 1682

PAHR RITA Q28 OF 0151 9Q20

CCC GRANITE LADY 5107

CONNELLY BLACK GRANITE

CCC PIONEER LADY 2049

AI bred, due 02.25.2023 to Connealy Treasure 558H.

These Yeti daughters have been as good uddered and calf raisers as we have had. This is a big hip, moderate framed, sound moving female with a very tidy udder. Her pedigree is filled with cow making, maternal cattle. Yeti, Black Granite, Pioneer and Right Time. Solid set of numbers that allow you to mate her how you like.



lot 71A

## 71A

BW .....	0.3
WW .....	65
YW .....	113
MM .....	23
CEM .....	12
MATW..	34
SC .....	0.65
WS .....	60
FS .....	87
GS .....	53
BS .....	141

### C EXCLUSIVE LASS 2064

AAA# 20365989 | DOB 01.05.2022 | Angus Female

MUSGRAVE 316 EXCLUSIVE

LD CAPITALIST 316

MUSGRAVE PRIM LASSIE 163-386

CCC YETI LASS 8058

PAHR YETI B5

CCC GRANITE LADY 5107

This Exclusive daughter provides you another bidding opportunity on the genetic prowess of cow strength. Her EPD profile is balanced and she ranks in the top 10% for BW among her contemporaries. We like how when you study her from behind she is wide pinned and square.



lot 72

## 72

BW .....	-1.3
WW .....	57
YW .....	95
MM .....	29
CEM .....	19
MATW..	37
SC .....	1.19
WS .....	66
FS .....	84
GS .....	51
BS .....	135

### CCC BIG SKY LADY 6022

AAA# 18513040 | DOB 01.02.2016 | Angus Female

MUSGRAVE BIG SKY

CONNELLY EARNAN 076E

SAV PRIMROSE 7861

CCC BISMARCK LADY 3019

S A V BISMARCK 5682

CCC MISS DOUGLAS 8030

AI bred, due 02.21.2023 to Sitz Stellar 705J.

Big stout power cow here that is big boned and big footed. She is numbered up nice as well especially on CED and MARB. She offers so much flexibility when you mate her because she is not made like a frail calving ease, high IMF cow so you can double down on the power. She is carrying a pregnancy by our newest herd sire 705J from Sitz. We are excited to see these calves.



lot 72A

## 72A

BW .....	-0.1
WW .....	73
YW .....	132
MM .....	31
CEM .....	17
MATW..	73
SC .....	1.02
WS .....	71
FS .....	103
GS .....	45
BS .....	149

### C GROWTH FUND LASS 2043

AAA# 20365971 | DOB 01.03.2022 | Angus Female

DEER VALLEY GROWTH FUND

BASIN PAYWEIGHT 1682

DEER VALLEY RITA 36113

CCC BIG SKY LADY 6022

MUSGRAVE BIG SKY

CCC BISMARCK LADY 3019

If you need added cow power and performance, set your target for this heifer come sale day. On a Big Sky cow that is one of our favorite and functional maternal lines. She has the genetics to take your herd to the next level.

## TERMS FOR EMBRYOS LOTS 73-93

If you don't achieve one pregnancy, Colyer Herefords will replace the same number of embryos of the same mating. If the same mating isn't available you will receive credit for the purchase price to use in a future sale. Most embryos are located at the ranch and can be picked up or we can help make arrangements to ship embryos. Shipping is the responsibility of the purchaser

**73**

### THREE FROZEN EMBRYOS

Selling 3 frozen embryos.

C GKB GUARDIAN 1015 ET LOEWEN GENESIS G16 ET  
C CJC BELLE AIR LASS 8037  
C BLACK HAWK LASS 8019 C BLACK HAWK DOWN ET  
C 88X RIBEYE LADY 6245

- First embryos sold by 320K sire Guardian
- Donor dam is Key West mother
- Numbers will be off the hook



C GKB Guardian 1015 ET



C Black Hawk Lass 8019

**74**

### THREE FROZEN EMBRYOS

Selling 3 frozen embryos.

C GKB GUARDIAN 1015 ET LOEWEN GENESIS G16 ET  
C CJC BELLE AIR LASS 8037  
C 4013 LADY MILES 0119 JINNIFAIL WHR X651/723 4013 ET  
C LADY MILES 5203

- Quick way to get Guardian genetics
- Dam will be a perfect match
- Moderate soft sided and deep



C GKB Guardian 1015 ET



C 4013 Lady Miles 0119

**75**

### FOUR FROZEN EMBRYOS

Selling 4 frozen embryos.

C GKB GUARDIAN 1015 ET LOEWEN GENESIS G16 ET  
C CJC BELLE AIR LASS 8037  
ILR 16W LADY HOLLY 929 ET PYRAMID 16W 110T 9116  
GERBER 627S HOLLY 096Y

- Last chance for Guardian embryos
- Donor dam was picked from Iron Lake Dispersion
- Guardian will add growth and performance



C GKB Guardian 1015 ET



ILR 16W Lady Holly 929 ET

**76**

### THREE FROZEN EMBRYOS

Selling 3 frozen embryos.

LOEWEN GENESIS G16 ET NJW 79Z Z311 ENDURE 173D ET  
LOEWEN 77 48 MISS 344N 4RB42  
C 1008 MILKY WAY 6133 ET NJW 98S R117 RIBEYE 88X ET  
HHR PAY IN GOLD 1008X ET

- Shouldn't even sell these
- 6133 as pretty of a cow as you can find
- Embryos by this donor hard to come by



Loewen Genesis G16 ET



C 1008 Milky Way 6133 ET

# ~ E M B R Y O S ~



Innisfail WHR X651/723 4013 ET



C 1008 Milky Way 6133 ET

**77**

## THREE FROZEN EMBRYOS

Selling 3 frozen embryos.

EFBEEF TFL U208 TESTED X651 ET  
**INNISFAIL WHR X651/723 4013 ET**  
 INNISFAIL P230 T723  
 NJW 98S R117 RIBEYE 88X ET  
**C 1008 MILKY WAY 6133 ET**  
 HHR PAY IN GOLD 1008X ET

- Mating will produce your next Donor
- 6133 also dam of Lot 1C
- She was a former Lot 1 herself
- Sold for \$54,000



Loewen Genesis G16 ET



C 105Y Lady Domino 4038

**78**

## FOUR FROZEN EMBRYOS

Selling 4 frozen embryos.

NJW 79Z Z311 ENDURE 173D ET  
**LOEWEN GENESIS G16 ET**  
 LOEWEN 77 48 MISS 344N 4RB42ET  
 CL 1 DOMINO 105Y  
**C 105Y LADY DOMINO 4038**  
 C 88X NOTICE ME 1311 ET

- Never miss a chance on 4038 genetics
- Full sibs were top selling bulls
- Full sib sells as bred Lot 40



Loewen Genesis G16 ET



C CJC 89T Miss Miles 4264 ET

**79**

## FOUR FROZEN EMBRYOS

Selling 4 frozen embryos.

NJW 79Z Z311 ENDURE 173D ET  
**LOEWEN GENESIS G16 ET**  
 LOEWEN 77 48 MISS 344N 4RB42ET  
 C MILES MCKEE 2103 ET  
**C CJC 89T MISS MILES 4264 ET**  
 TH 16G 20N GEMINI 89T

- Donor dam mother of herd sire Belle Heir
- Grandmother of Guardian
- Mother of bred heifer lot 37



C Key West 0065



C CJC 89T Miss Miles 4264 ET

**80**

## THREE FROZEN EMBRYOS

Selling 3 frozen embryos.

C CJC BELLE HEIR ET  
**C KEY WEST 0065**  
 C BLACK HAWK LASS 8019  
 C MILES MCKEE 2103 ET  
**C CJC 89T MISS MILES 4264 ET**  
 TH 16G 20N GEMINI 89T

- Exciting mating here
- Belle Heir mother mated to Key West
- Maternal and Carcass combination



81

**FOUR FROZEN EMBRYOS**

Selling 4 frozen embryos.

SHF RIB EYE M326 R117  
 NJW 985 R117 RIBEYE 88X ET  
 NJW 9126J DEW DOMINO 98S  
 TFR KU ROLL THE DICE 1326  
 C BAR ONE 1326 BAILEE 0226 ET  
 BR BAILEE 1066 ET

- Stop and look here
- Donor dam reigning Denver champ
- Sexed female embryos
- Sire is famous female maker 88X



NJW 985 R117 Ribeye 88X ET



C Bar One 1326 Bailee 0226 ET

82

**THREE FROZEN EMBRYOS**

Selling 3 frozen embryos.

INNISFAIL WHR X651/723 4013 ET  
 C REAL DEAL 0137 ET  
 C CJC 89T MISS MILES 4264 ET  
 TH FRONTIER 174E  
 C 6133 FRONTIER LADY 0132 ET  
 C 1008 MILKY WAY 6133 ET

- Fresh genetics out of first calver
- Granddam is 6133 and 4264
- Donor dam is part of Lot 1 choice



C Real Deal 0137 ET



C 6133 Frontier Lady 0132 ET

83

**THREE FROZEN EMBRYOS**

Selling 3 frozen embryos.

H FHF ADVANCE 628 ET  
 ECR 628 ADVANCE 9490 ET  
 ECR CANDI 5451 ET  
 C 4038 BELL AIR 8108 ET  
 C 8108 BELL AIR LASS 0094  
 C R111 WILDCAT LADY 7316 ET

- This mating could really fire
- Donor dam is Lot 1A
- Carcass, maternal and phenotype in one



ECR 628 Advance 9490 ET



C 8108 Bell Air Lass 0094

84

**THREE FROZEN EMBRYOS**

Selling 3 frozen embryos.

H FHF ADVANCE 628 ET  
 ECR 628 ADVANCE 9490 ET  
 ECR CANDI 5451 ET  
 BR BELLE AIR 6011  
 C BAR1 CANDY BELLE 8089 ET  
 C CANDY CANE 4030 ET

- These will be wild fronted
- Show heifer mating with superior look
- Granddams top and bottom National Champs



ECR 628 Advance 9490 ET



C Bar1 Candy Belle 8089 ET

# ~ E M B R Y O S ~



Loewen Genesis G16 ET



C 88X Notice Me 1313 ET

85

## THREE FROZEN EMBRYOS

Selling 3 frozen embryos.

NJW 79Z Z311 ENDURE 173D ET  
**LOEWEN GENESIS G16 ET**  
 LOEWEN 77 48 MISS 344N 4RB42ET  
 NJW 98S R117 RIBEYE 88X ET  
**C 88X NOTICE ME 1313 ET**  
 C NOTICE ME ET

- Proof is all done here no guessing
- 1313 full sister to Miles McKee
- Same mating as Lot 8
- Blood sibs to Lot 7



HAPP BK Valor 37C ET



BR Bailee 1066 ET

86

## FOUR FROZEN EMBRYOS

Selling 4 frozen embryos.

HAPP EXTRA POINT 1220 ET  
**HAPP BK VALOR 37C ET**  
 JSF 12N LADY VAL 9T  
 DM BR SOONER  
**BR BAILEE 1066 ET**  
 BR GABRIELLE 5082

- Numerous high sellers from this mating
- Great show cattle
- Full sib brother 9354 is sire of 28A



Loewen Genesis G16 ET



C 95T 88X Ribeye Lady 4208 ET, granddam

87

## THREE FROZEN EMBRYOS

Selling 3 frozen embryos.

NJW 79Z Z311 ENDURE 173D ET  
**LOEWEN GENESIS G16 ET**  
 LOEWEN 77 48 MISS 344N 4RB42ET  
 BR CSF COPPER ET  
**C 88X COPPER LADY 7242**  
 C 95T 88X RIBEYE LADY 4208 ET

- Donor dam is true power
- Works well with Genesis
- Generations of udder quality on bottom



NJW 79Z 22Z Mighty 49C ET



C Cotton Candy 3003

88

## THREE FROZEN EMBRYOS

Selling 3 frozen embryos.

NJW 67U 28M BIG MAX 22Z  
**NJW 79Z 22Z MIGHTY 49C ET**  
 BW 91H 100W RITA 79Z ET  
 NJW 98S R117 RIBEYE 88X ET  
**C COTTON CANDY 3003**  
 HHR PAY IN GOLD 1008X ET

- Donor dam 3003 full sister to Eye Candy
- 3003 was the most powerful sister we had
- This mating is proven and solid



Loewen Genesis G16 ET



C R98 Miles 6303 ET

89

## THREE FROZEN EMBRYOS

Selling 3 frozen embryos.

NJW 79Z Z311 ENDURE 173D ET  
**LOEWEN GENESIS G16 ET**  
 LOEWEN 77 48 MISS 344N 4RB42ET  
 C MILES MCKEE 2103 ET  
**C R98 MILES 6303 ET**  
 -S M326 LADY ADV 176L R98 ET

- Mating is full sib to Lot 17
- All the color and look you can get
- Will be maternal with carcass numbers

90

**FOUR FROZEN EMBRYOS**

Selling 4 frozen embryos.

SHF RIB EYE M326 R117  
**NJW 98S R117 RIBEYE 88X ET**  
 NJW 9126J DEW DOMINO 98S  
 CRR ABOUT TIME 743  
**GGSC CARLEE 6B**  
 SHF COYOTTE DONE

- This mating produced Lot 35 cow 2021
- 88X is an elite female producer
- These will be the keeping kind



NJW 98S R117 Ribeye 88X ET



GGSC Carlee 6B

91

**THREE FROZEN EMBRYOS**

Selling 3 frozen embryos.

CRR 719 CATAPULT 109  
**CRR 109 ON POINT 559 ET**  
 CRR 435 KELLY 161  
 CRR ABOUT TIME 743  
**GGSC CARLEE 6B**  
 SHF COYOTTE DONE

- On Point is proving to be elite show heifer sire
- Carlee many times champion



CRR 109 On Point 559 ET



GGSC Carlee 6B

92

**FOUR FROZEN EMBRYOS**

Selling 4 frozen embryos.

CRR 5280  
**C 5280 DIVERSIFIED 6121 ET**  
 C 88X NOTICE ME 1311 ET  
 CL 1 DOMINO 215Z  
**CL1 DOMINETTE 475B 1ET**  
 CL 1 DOMINETTE 617S

- Diversified sexed female embryos
- Out of a L1 Cooper cow
- Blends show ring with maternal



C 5280 Diversified 6121 ET



CL1 Dominette 475B 1ET

93

**FIVE FROZEN EMBRYOS**

Selling 5 frozen embryos.

CRR 5280  
**C DOUBLE YOUR MILES 6077 ET**  
 C 88X NOTICE ME 1311 ET  
 REMITALL NATION WIDE ET 93N  
**REMITALL GRAVES JUNO 204S**  
 REMITALL JUNO 64N

- Mr. Canada mother donor dam
- This mating works well
- Power moderate big body sire
- Look and eye appeal from the donor



C Double Your Miles 6077 ET



Remitall Graves Juno 204S



Katie Colyer

94

BW .....	1.2
WW .....	62
YW .....	98
MM .....	35
M&G .....	66
UDDR ..	1.60
TEAT ....	1.50
FAT .....	0.010
REA .....	0.69
MARB ..	0.30
SCHB....	154

**C CJC BELLE HEIR ET**

AHA# 44389959 | DOB 01.12.2018 | Horned Hereford Bull

BR BELLE AIR 6011      BAR S LHF 028 240  
 BR BELL 4082 ET  
 C CJC 89T MISS MILES 4264 ET      C MILES MCKEE 2103 ET  
 TH 16G 20N GEMINI 89T

Belle Heir is currently in the top 10% of the breed for 13 traits. Rarely does a young herd bull surface that does so many things right for the industry. He has been used successfully on heifers providing calving ease and light birthweights. His calves show explosive growth and have structural integrity and extra pigment. The carcass figures rank him among the breeds elite. He is currently enrolled in the National Reference Sire Program. He is so impressive to look at in the breeding pasture because of his massive build and his structural soundness. He has the extra pigment and dark red color that are demanded in today's industry. His first daughters calved in the spring of 2022 and they are very impressive.

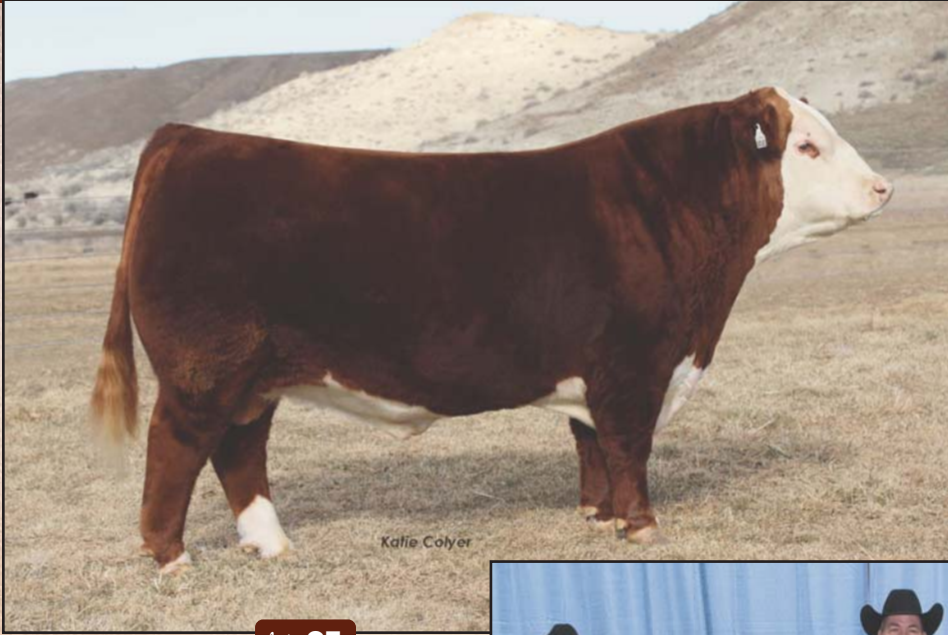
Owned with Knox Brothers, TX

- LOT 94A** ... Selling 5 straws of C CJC Belle Heir ET
- LOT 94B** ... Selling 5 straws of C CJC Belle Heir ET
- LOT 94C** ... Selling 5 straws of C CJC Belle Heir ET
- LOT 94D** ... Selling 5 straws of C CJC Belle Heir ET
- LOT 94E** ... Selling 5 straws of C CJC Belle Heir ET



C CJC 89T Miss Miles 4264 ET, dam of C CJC Belle Heir ET

# ~ SEMEN ~



lot 95



lot 96

**95**

BW	.....	2.8
WW	.....	69
YW	.....	105
MM	.....	36
M&G	....	71
UDDR	..	1.50
TEAT	....	1.50
FAT	.....	-0.020
REA	.....	0.73
MARB	..	0.18
SCHB	....	161

## C KEY WEST 0065

AHA# 44122894 | DOB 01.05.2020 | Polled Hereford Bull

C CJC BELLE HEIR ET

BR BELLE AIR 6011  
C CJC 89T MISS MILES 4264 ET  
C BLACK HAWK DOWN ET  
C 88X RIBEYE LADY 6245

C BLACK HAWK LASS 8019

This young sire proved to be very useful when calving and breeding replacement females this spring. He is out of a first calf heifer that made it straight to the donor pen. Use this one for udder quality and calving ease but also his carcass values and look makes him big time herd sire. Breeders around the country are excited about the calves by Key West.

Owned with Jennings, Illinois

- LOT 95A ... Selling 5 straws of C Key West 0065
- LOT 95B ... Selling 5 straws of C Key West 0065
- LOT 95C ... Selling 5 straws of C Key West 0065
- LOT 95D ... Selling 5 straws of C Key West 0065
- LOT 95E ... Selling 5 straws of C Key West 0065

**96**

BW	.....	2.7
WW	.....	62
YW	.....	105
MM	.....	32
M&G	....	63
UDDR	..	1.20
TEAT	....	1.30
FAT	.....	0.050
REA	.....	0.86
MARB	..	0.18
SCHB	....	142

## C 8086 SANCHO 1084 ET

AHA# 44257610 | DOB 01.07.2021 | Horned Hereford Bull

ECR 628 IVYS ADVANCE 8923 ET

H FHF ADVANCE 628 ET

C 4038 BELLE LASS 8086 ET

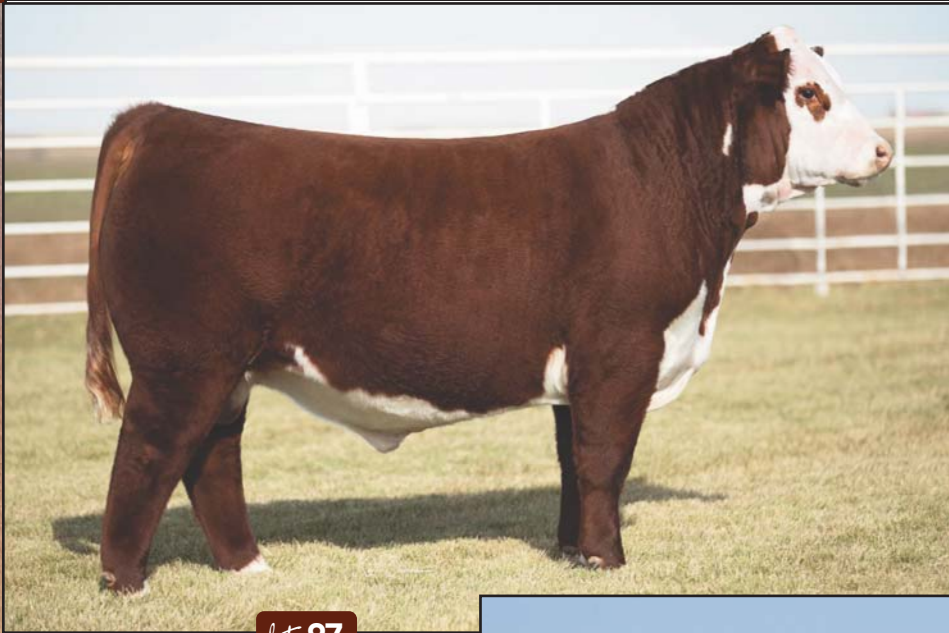
BR BELLE AIR 6011  
C 105Y LADY DOMINO 4038

The reigning Denver Champion Bull and Western Nugget Calf Champion Bull. Powerhouse herd bull prospect with a super EPD profile. A massive bull with extra rib, body depth, and muscle definition. His pedigree is stacked with maternal excellence with Belle Air and 4038 on the bottomside. Three full sisters were a highlight in our fall female sale averaging \$16,800. He looks impressive right now and will be on display sale day.

Owned with Bowling Herefords, Oklahoma and Bill King, New Mexico.

- LOT 96A ... Selling 5 straws of C 8086 Sancho 1084 ET
- LOT 96B ... Selling 5 straws of C 8086 Sancho 1084 ET
- LOT 96C ... Selling 5 straws of C 8086 Sancho 1084 ET
- LOT 96D ... Selling 5 straws of C 8086 Sancho 1084 ET
- LOT 96E ... Selling 5 straws of C 8086 Sancho 1084 ET

# ~ SEMEN ~



lot 97



lot 98

97



BW .....	3.1
WW .....	77
YW .....	126
MM .....	31
M&G ....	70
UDDR ..	1.10
TEAT ....	1.10
FAT .....	0.100
REA .....	0.64
MARB ..	0.48
SCHB....	170

## LOEWEN GENESIS G16 ET

AHA# 43987463 | DOB 01.17.2019 | Polled Hereford Bull

NJW 79Z Z311 ENDURE 173D ET

KCF BENNETT ENCORE Z311 ET

BW 91H 100W RITA 79Z ET

MSU TCF REVOLUTION 4R

LOEWEN 77 48 MISS 344N 4RB42ET

PCR JACKLYN NIKOLE 344N

The most talked about young sire in the history of the breed and rightfully so. His first 27 sons averaged over \$8,500 in the spring bull sale. He has proven to be one of the most popular young bulls of all time and his first set of calves are among the breeds elite. After his first set of calves has been processed his CED has improved while his growth numbers are in the top 1%. He is in the top 10% for 12 economically important traits. His striking color pattern and being homozygous polled also adds value to his offspring.

Owned with Express Ranches, Oklahoma; Bill King Ranch, New Mexico; Barber Ranch, Texas; and Dry Creek Farms, Alabama.

**LOT 97A** ... Selling 5 straws of Loewen Genesis G16 ET

**LOT 97B** ... Selling 5 straws of Loewen Genesis G16 ET

**LOT 97C** ... Selling 5 straws of Loewen Genesis G16 ET

**LOT 97D** ... Selling 5 straws of Loewen Genesis G16 ET

**LOT 97E** ... Selling 5 straws of Loewen Genesis G16 ET

98



BW .....	1.2
WW .....	51
YW .....	75
MM .....	33
M&G ....	58
UDDR ..	1.40
TEAT ....	1.50
FAT .....	-0.01
REA .....	0.40
MARB ..	0.43
SCHB....	130

## NJW 98S R117 RIBEYE 88X ET

AHA# 43094146 | DOB 02.08.2010 | Horned Hereford Bull

SHF RIB EYE M326 R117

H FHF ADVANCE 628 ET

HVH MISS HUDSON 83K 8M

NJW 9126J DEW DOMINO 98S

CL 1 DOMINO 9126J 1ET

NJW 57G 74G DEW 5M

One of the elite breeding bulls in the history of the breed. Unique EPD's that gives you calving ease, enhanced carcass quality and maternal excellence. He will go down in history as being one of the great cow producers ever. A trait leader in 10 categories. In the recent Simplot study 88X steers excelled in most areas including birthweight, calving ease, Yield Grade, Feed per pound gain, RFI, and the steers Marbled right with the Angus sired steers in the study. Progeny have topped sales and shows nationwide and meets the demands of the commercial industry.

Owned with GKB, Texas; Ned and Jan Ward, Wyoming and King Herefords, New Mexico.

**LOT 98A** ... Selling 5 straws of NJW 98S R117 Ribeye 88X ET

**LOT 98B** ... Selling 5 straws of NJW 98S R117 Ribeye 88X ET

**LOT 98C** ... Selling 5 straws of NJW 98S R117 Ribeye 88X ET

**LOT 98D** ... Selling 5 straws of NJW 98S R117 Ribeye 88X ET

**LOT 98E** ... Selling 5 straws of NJW 98S R117 Ribeye 88X ET

**LOT 98F** ... Selling 5 straws of NJW 98S R117 Ribeye 88X ET



Katie Colyer

99

ATAFAS  
GE-EPD

BW .....	3.9
WW .....	52
YW .....	81
MM .....	30
M&G ....	57
UDDR ..	1.40
TEAT ....	1.30
FAT .....	0.010
REA .....	0.58
MARB ..	0.11
SCHB....	119

**C 5355C BELLE AIR 1085 ET**

AHA# 44257611 | DOB 01.08.2021 | Horned Hereford Bull

**BR BELLE AIR 6011**

BAR S LHF 028 240

BR BELLE 4082 ET

**SULL DIANA 5355C ET**

C MILES MCKEE 2103 ET

TCC MS DIANA 01



Katie Colyer

SULL Diana 5355C ET,  
dam of C 5355C Belle Air 1085 ET

Not only is this young sire ideal in terms of phenotype but he scanned with a whopping 5.6 IMF score from the CUP lab new system which is designed to find outliers like this bull. After being a member of the Reserve Champion pen in Denver this IMF score made him the highest Hereford bull we have ever scanned and he would have ranked third among all the Angus bulls scanned. His dam was Reserve Grand Champion at Fort Worth and is a favorite with visitors at the ranch with a square, level udder. Six daughters have averaged \$16,060. This is her first son available to use AI and ET.

- LOT 99A** ... Selling 5 straws of C 5355C Belle Air 1085 ET
- LOT 99B** ... Selling 5 straws of C 5355C Belle Air 1085 ET
- LOT 99C** ... Selling 5 straws of C 5355C Belle Air 1085 ET
- LOT 99D** ... Selling 5 straws of C 5355C Belle Air 1085 ET
- LOT 99E** ... Selling 5 straws of C 5355C Belle Air 1085 ET
- LOT 99F** ... Selling 5 straws of C 5355C Belle Air 1085 ET
- LOT 99G** ... Selling 5 straws of C 5355C Belle Air 1085 ET
- LOT 99H** ... Selling 5 straws of C 5355C Belle Air 1085 ET
- LOT 99I** ... Selling 5 straws of C 5355C Belle Air 1085 ET
- LOT 99J** ... Selling 5 straws of C 5355C Belle Air 1085 ET



31058 Colyer Road  
Bruneau, ID 83604

# Colyer

HEREFORDS & ANGUS

**21st** *Annual*  
FEMALE SALE

**OCTOBER 1, 2022**

at the ranch, Bruneau, Idaho

