

ILLINI Top Cuts 2019

VOLUME XVI

9.15.19 ♦ 1 P.M. | MACOMB, IL



PRESENTED BY

LOWDERMAN CATTLE COMPANY

GENETICS YOU CAN BELIEVE IN

LOWDERMAN CATTLE COMPANY

PRESENTS

ILLINI Top Cut 2019 VOLUME XVI

GENETICS YOU CAN BELIEVE IN

Sale to be held at the Lowderman Auction Facility and Indoor Sales Pavilion located two miles west of Macomb, Illinois, on Highway 136. Situated at the Intersection of Highways 136 and 336.

Sale Address: GPS Address is 8550 U.S. Hwy. 136 West, Colchester, IL 62326

Schedule of Events

Saturday, Sept. 14

Cattle available for your inspection, Social in the Evening

Sunday, Sept. 15, 1 p.m.

Illini Top Cut Auction

Complimentary Lunch Served

Sale Day Phones:

Office — prior to sale 309-833-5543
 During the Sale — Brent Lowderman 309-221-9621
 During the Sale — Jack Lowderman 309-255-0330

Auctioneers:

Monte W. Lowderman, Cell 309-255-0110
 Cody Lowderman, Cell 309-313-2171

Sale Consultants:

Mark McClintock 325-650-4223
 JDH Marketing Services, Jack Hedrick 904-613-4261
 Midwest Cattle Service, Jim Reed 660-527-3507
 Jae Van Horn, LCC 317-412-3298
 Reid Suddeth, LCC 608-574-9924
 Billy Widerman 410-984-2961
 Alex Cosgray, Streamline Genetics 765-490-6286
 Adam Swigart 309-826-3809

Sale Staff, Field and Breed Representatives:

John Meents, AHA 419-326-6921
 Delvin Heldermon, Special Assignment 405-205-1116
 Shane Ryan, Midwest Marketer and Lowderman Auction Options 309-371-7490
 Cody Crum, Livestock Plus and Lowderman Auction Options 217-248-7282
 Jack Ward 816-842-3757

If you desire assistance in selection or if you will be unable to attend the sale, but would like representation, contact any of the above sale staff members or owners. Your requests will be handled confidentially and professionally.

Acknowledgements:

Creative Services, Catalog
 TransOva and the Entire Staff
 Double Diamond Genetics, Inc., Embryologist
 Tuition Genetics and Galva Vet Clinic, Embryologist
 Pure Reproductions, Embryologist
 Dr. Raymond Huston, Veterinarian and Herd Health
 Adam Swigart, Photographer

Accommodations in Macomb:

(Ask for the Illini Top Cut Rate)

Hampton Inn 309-837-6000; Best Western 309-836-6700; Macomb Inn 309-833-5511;
 Super 8 309-836-8888; Amerihost 309-837-2220.

If you need assistance, feel free to call, we will be happy to assist you in making your accommodations.

Airport/Air Service

Macomb, Ill., is located within one hour of the Quad Cities (Moline), Peoria, Springfield and Quincy, Ill., airports. St. Louis and Bloomington, Ill., airports are within 3 hours of the farm. Each served by most major airlines.

THE LOWDERMAN FAMILY

P.O. Box 488, Macomb, IL 61455

Office: 309-833-5543 • www.lowderman.com • info@lowderman.com

Jack 309-255-0330 • Monte 309-255-0110 • Brent 309-221-9621

Cody 309-313-2171 • Jae 317-412-3298 • Reid 608-574-9924

ILLINI TOP CUT 2019 — SEPTEMBER 15, 2019



Believe...

We BELIEVE in God and our Country; We BELIEVE in our Youth, Family and Friends; We BELIEVE in the Hereford Breed and We BELIEVE in Providing Proven, Efficient, Genetics that create positive results and added VALUE.

Dear Hereford Breeders, Juniors, Friends, and Cattlemen,

It is with pride and enthusiasm, that we at LCC, present to you this year's edition of the Illini Top Cut Sale, "Genetics WE Believe in, so you can Purchase Genetics YOU can Believe in." This year's offering is backed by Generations of Proven Success, in the Ring and in Production; and is highlighted by seven (7) cow families. Three of these family matriarchs were named a National Champion, and five have raised a National Champion.

Two cow families that have earned the spotlight at LCC are features of this sale offering. The KIWI cow family is anchored by a breed Icon "Kiwi" 3139, (now deceased.) We are offering in her entirety, her proven daughter and lead Donor for LCC, "KIWI 116 – Miss Grand Island." Including 116, three generations of this cow family is being offered. Including her dam 3139, All 4 Generations have been named a National Champion and 3 of the 4 generations have raised a National Champion. The same can be said about the powerful Remetee 213 Cow Family: A National Champion, and dam of the National Champion, LCC FBF Time Traveler 480. We are selling a powerful set of calves out of donor 213, as well as calves sired by her son, The National Champion, LCC FBF Time Traveler 480.

This year's offering also includes an intriguing select set of ET calves including show heifer prospects, and herd sire candidates, as well as, A select set of donor type cows and young productive cows with spring born calves at side. We also invite your inspection of the quality females being offered by our friends and ITC sale member, the Benedict Family and Guest Prairie Rose Cattle Company.

We welcome your visit to the farm prior to the auction, and invite you to be our guest on sale day. If you have any questions, contact any family member or our office at (309) 833-5543. We look forward to seeing YOU and being YOUR host on September 15th.

The Lowderman Family
 Jack & Sherry; Monte, Carrie & Rhett; Brent, Kris, Blake & Morgan;
 Cody, Abby, Tuck & Nash
 Jae VanHorn
 Reid Suddeth



Words to Live By...

Watch Your Thoughts. They Become your Words
 Watch Your Words, They Become Your Actions
 Watch Your Actions, They Become Your Character
 Watch Your Character, It's Your Destiny



Jae Van Horn

Reid Suddeth



Benedict Herefords

SWEATMAN
HEREFORDS

Prairie Rose
Cattle Co.

of the prairie cross
Hereford Cattle



Live Auctions.TV

Online bidding will be available by registering at LiveAuctions.tv.

WWW.LOWDERMAN.COM



Lot 1 — LCC Patton Kiwi 116 ET



LCC PATTON KIWI 116 ET (DLF,HYF,IEF)

P43234652 — Calved: 5/21/11 — Tattoo: LE 116

DB HARD DRIVE ET
SR CG HARD ROCK 5073 (SOD)(DLF,HYF,IEF)
P42612624 SR MS MARK 9167 (DLF,HYF,IEF)

REMITALL KOOTENAY 9K (DLF,HYF,IEF)
UPS MISS KOOTENAY 3915 1ET (DLF,HYF,IEF)
P42472290 UPS MISS PURE GOLD 0613

REMITALL ONLINE 122L (SOD)(CHB)(DLF,HYF,IEF)
B&S MISS SUMMIT 145E (DLF,HYF,IEF)
SR EXPECTATION 5130
SR L1 LADY 6110

REMITALL HOLLYWOOD 37H
REMITALL GINGER 23G (DLF,HYF,IEF)
C-S PURE GOLD 98170 (SOD)(CHB)(DLF,HYF,IEF)
UPS MISS BANG 6627 (DOD)

CE	BW	WW	YW	DMI	SC	SCF	MM	M&G	MCE
-0.8	4.5	57	101	0.3	1.3	13.8	21	49	0.9
MCW	UDDR	TEAT	CW	FAT	REA	MARB	BMIS	BIIS	CHBS
118	1.10	1.10	76	-0.001	0.56	0.11	329	400	122

- Opportunity is knocking!! A rare chance to get in on this powerhouse donor! She has written her own success story with multiple national champion progeny. The tank is still full, she's in great condition, athletic, and still producing good with lots of future production ahead of her. Here is a Big Time investment opportunity with enormous earning potential.
- Selling full interest and retaining two (2) flushes.

Three Generations of Donor Power



UPS Miss Kootenay 3915 1ET —
Dam of 116, Multiple time National Champion and dam of National Champions



LCC Patton Kiwi 116 ET —
"Miss Grand Island" National Reserve Champion Female and Dam of National Champions



LCC SHF Miss Lemon Lime 502 ET —
Daughter of 116. Purchased in a past ITC sale by the Deana Jak family, Lemon Lime was chosen multiple times as National Champion Female.

Kiwi Family ET Calves



Lot 2A — LCC 6026D Kiwi 21G ET

C STOCKMAN 2059 ET (CHB)(DLF,HYF,IEF)
 B&C STOCK OPTION 6026D ET (DLF,HYF,IEF,MSUDF)
 43719224 B&C MISS TOP GUN 2031Z 1ET (DLF,HYF,IEF,MSUDF)

NJW 98S R117 RIBEYE 88X ET (SOD)(DLF,HYF,IEF,MSUDF)
 C NOTICE ME ET (DLF,HYF,IEF)
 GH ADAMS TOP GUN ET 516T (DLF,HYF,IEF)
 B&C MS CHRISTI 27031 (DLF,IEF)

LCC BACK N TIME ET (DLF,HYF,IEF)
 LCC KEE WEE 208X (DLF,HYF,IEF,MSUDF)
 P43279622 PATTON KIWI 727 (DLF,HYF,IEF)

STAR BRIGHT FUTURE 533P ET (SOD)(DLF,HYF,IEF)
 LCC MERRY TIME 244 (DLF,HYF,IEF)
 GRANDVIEW 70AKS SONORA 145R (SOD)(CHB)(DLF,HYF,IEF)
 PATTON KIWI 502 (DLF,HYF,IEF)



Lot 2B — LCC RL Kee Wee's Option 23G ET



LCC 6026D KIWI 21G ET

P44035381 — Calved: 2/28/19 — Tattoo: LE 21G

CE	BW	WW	YW	DMI	SC	SCF	MM	M&G	MCE
-6.1	5.7	56	87	0.1	0.9	12.1	27	55	0.9
MCW	UDDR	TEAT	CW	FAT	REA	MARB	BMI\$	BIIS	CHBS
81	1.10	1.10	72	-0.011	0.64	0.11	300	368	112

• Here are the first of two full sisters that are built for the long haul with tons of quality. A maternal sister was a past high seller and Division Champion at JNHE for the Koontz and Gleason families. This heifer is built nearly ideal at the ground, being square and true off all, both with the right kind of angles and hits the surface softly, but with authority. She opens into a big rib cage, with added length and attractiveness. Study the goods this one offers and put her on your short list.



LCC RL KEE WEE'S OPTION 23G ET

44049866 — Calved: 3/15/19 — Tattoo: RE 23G

CE	BW	WW	YW	DMI	SC	SCF	MM	M&G	MCE
-6.1	5.7	56	87	0.1	0.9	12.1	27	55	0.9
MCW	UDDR	TEAT	CW	FAT	REA	MARB	BMI\$	BIIS	CHBS
81	1.10	1.10	72	-0.011	0.64	0.11	300	368	112

• The second of full sisters and made to make a great yearling heifer. Super sharp and attractive, added length, with the right kind of rib shape to develop into a great big one. Sound as a cat, and exceptionally attractive. A great candidate, especially as a yearling female.

Three Generations of Donor Power



Patton Kiwi 727 —
 Granddam of Lots 2A and 2B



UPS Miss Kootnay 3915 1ET —
 Great Grandam of Lots 2A and 2B



LCC 480 Kiwi 3E ET —
 Purchased by the Koontz Girls in the 2017 ITC Sale.
 Maternal Sib to Lots 2A and 2B



Lot 3 — RL Timin Kiwi 17G ET



Lot 4 — LCC 1326 Lemonade 5G ET



RL TIMIN' KIWI 17G ET

P?279159 — Calved: 1/20/19 — Tattoo: BE 17G

RST TIMES A WASTIN 0124 (SOD)(CHB)(DLF,HYF,IEF)
LCC FBF TIME TRAVELER 480 (DLF,HYF,IEF,MSIDF)
P43475752 JB REMETEE 213 (DLF,HYF,IEF)

CRR ABOUT TIME 743 (SOD)(DLF,HYF,IEF)
RST MS 1000 BLAZER 2029 (DOD)(DLF,HYF,IEF)
PURPLE MILSAP 45S (SOD)(DLF,HYF,IEF)
WPH BAILEY 3P (DLF,IEF)

LCC BACK N TIME ET (DLF,HYF,IEF)
LCC SWEET TIME KIWI 412
43474442 UPS MISS KOOTENAY 3915 1ET (DLF,HYF,IEF)

STAR BRIGHT FUTURE 533P ET (SOD)(DLF,HYF,IEF)
LCC MERRY TIME 244 (DLF,HYF,IEF)
REMITALL KOOTENAY 9K (DLF,HYF,IEF)
UPS MISS PURE GOLD 0613

Sire:

CE	BW	WW	YW	DMI	SC	SCF	MM	M&G	MCE
-1.6	3.8	64	107	0.5	0.7	14.8	21	53	1.8
MCW	UDDR	TEAT	CW	FAT	REA	MARB	BMI\$	BIIS	CHBS
116	1.20	1.20	80	-0.042	0.67	0.02	342	413	125

Dam:

CE	BW	WW	YW	DMI	SC	SCF	MM	M&G	MCE
-7.4	5.3	58	94	0.3	1.1	8.6	25	54	-1.4
MCW	UDDR	TEAT	CW	FAT	REA	MARB	BMI\$	BIIS	CHBS
101	1.20	1.20	75	-0.032	0.60	0.06	249	313	117

• This is one of the really nice ones in the offering. She's put together awfully well and is hard to put a hole in her. Ultra-eye catching, massive in her mid-rib design, added stoutness and feature, yet feminine throughout. She's bred to be a big-league contender and she shows through visually.



LCC 1326 LEMONADE 5G ET

44035318 — Calved: 1/26/19 — Tattoo: LE 5G

STAR TCF LOCK-N-LOAD 300W ET (DLF,HYF,IEF)
TFR KU ROLL THE DICE 1326 (DLF,HYF,IEF)
43477667 LH LANGFORD LADY 0253 ET (DLF,HYF,IEF)

LAGRAND RELOAD 80P ET (SOD)(CHB)(DLF,HYF,IEF)
STAR TCF ADV ORALEE 173P ET (DLF,HYF,IEF)
THM DURANGO 4037 (SOD)(DLF,HYF,IEF)
LPG 59K INDEPENDENCE LASS 22N

CHAC MASON 2214 (CHB)(DLF,HYF,IEF)
LCC SHF MISS LEMON LIME 502 ET (DLF,HYF,IEF)
43595429 LCC PATTON KIWI 116 ET (DLF,HYF,IEF)

CRR ABOUT TIME 743 (SOD)(DLF,HYF,IEF)
GKB 31 GRACE 7100 (DLF,HYF,IEF)
SR CG HARD ROCK 5073 (SOD)(DLF,HYF,IEF)
UPS MISS KOOTENAY 3915 1ET (DLF,HYF,IEF)

CE	BW	WW	YW	DMI	SC	SCF	MM	M&G	MCE
-4.6	5.3	60	102	0.3	1.1	12.9	20	50	-3.5
MCW	UDDR	TEAT	CW	FAT	REA	MARB	BMI\$	BIIS	CHBS
111	1.20	1.10	89	0.019	0.74	0.01	324	390	134

• Here is a young herdsire prospect that brings a power packed bottom side to the table. Her mother was a many time Champion and barn favorite female for the Howe family and Deana Jak farm. This guy is high-quality from end to end with a stellar look and pattern about him. He's built on a solid running gear, big bodied, extra long with shape throughout. He looks like a herd bull through his head and neck and should prove to be a logical choice for injecting added quality.



Sire of Lot 3 —
LCC FBF Time Traveler 480



Dam of Lot 4 —
LCC SHF Miss Lemon Lime 502 ET



Sire of Lot 4 —
TFR KU Roll The Dice 1326

Remetee 213 Family



Lot 5A — LCC Front N Center 27G ET



Lot 5B — LCC Center Of Attn 26G ET



Lot 5C — LCC Miss Outburst 25G ET



Dam of Lots 5A-5C —
JB Remetee 213



Son of JB Remetee 213 —
LCC FBF Time Traveler 480



Sire of Lots 5A-5C —
BR Copper 124Y



LCC FRONT N CENTER 27G ET

P44035408 — Calved: 3/23/19 — Tattoo: LE 27G

BR CSF COPPER ET (DLF,HYF,IEF,MSUDF)
JB COPPER 124Y (DLF,HYF,IEF)
43273909 BR ABIGAIL 8130 ET (DLF,HYF,IEF)

DM BR SOONER (CHB)(DLF,HYF,IEF)
BR GABRIELLE 5082 (DLF,HYF,IEF)
DM BR SOONER (CHB)(DLF,HYF,IEF)
BR GABRIELLE 5082 (DLF,HYF,IEF)

PURPLE MILSAP 45S (SOD)(DLF,HYF,IEF)
JB REMETEE 213 (DLF,HYF,IEF)
P43056323 WPH BAILEY 3P (DLF,IEF)

BR MOLER ET (CHB)(DLF,IEF)
JH MISS SUSIE 06L
REMITALL ONLINE 122L (SOD)(CHB)(DLF,HYF,IEF)
FJ MILK LASS 3F

CE	BW	WW	YW	DMI	SC	SCF	MM	M&G	MCE
-3.8	5.2	74	115	0.8	0.6	11.9	25	62	-3.7
MCW	UDDR	TEAT	CW	FAT	REA	MARB	BMS	BIIS	CHBS
107	1.10	1.10	90	0.009	0.77	0.16	309	398	125

- Big words, but this may very well be 213's best to date. This set of full sisters are flat good and 27G leads the trio off. 27G offers so much, yet it's so simple. It starts with a flawless running gear and being nearly ideal in her angles. She opens up with added rib and body and ties into and exceptionally flat shoulder, and her neck comes out high at the top side and reads with so much youth, femininity and quality through her head and neck. This is one cocky female that will play ball at the highest level. If you're serious about competing then look no further. Simply put this one is built for the backdrop.



LCC CENTER OF ATTN 26G ET

P44035403 — Calved: 3/21/19 — Tattoo: LE 26G

CE	BW	WW	YW	DMI	SC	SCF	MM	M&G	MCE
-3.8	5.2	74	115	0.8	0.6	11.9	25	62	-3.7
MCW	UDDR	TEAT	CW	FAT	REA	MARB	BMS	BIIS	CHBS
107	1.10	1.10	90	0.009	0.77	0.16	309	398	125

- The second of an awesome set of full sisters and the quality show doesn't drop off. 26G is built a lot like her sister. She's ultra-good at the ground and from a structure standpoint and motors with ease. She has the right kind of rib shape to keep developing into a big time candidate. She's square hipped with the right kind of foot and bone and is laid in neatly through her front 1/3. All the parts and pieces are here for her to right her own chapter in the book of 213.



LCC MISS OUTBURST 25G ET

P44035400 — Calved: 3/21/19 — Tattoo: LE 25G

CE	BW	WW	YW	DMI	SC	SCF	MM	M&G	MCE
-3.8	5.2	74	115	0.8	0.6	11.9	25	62	-3.7
MCW	UDDR	TEAT	CW	FAT	REA	MARB	BMS	BIIS	CHBS
107	1.10	1.10	90	0.009	0.77	0.16	309	398	125

- The last of the Copper x 213's and the quality doesn't slip. This female is good at every angle. She moves like a cat and is nearly flawless in her angles and structure. Good lined, square hipped, bid middle and ultra-cool through her front end. She's built to with stand the long haul and develop in to a stellar yearling. Study this one, and put her on the short list. An awesome trio of heifers that will be fun to follow!

Remetee 213 Family



LCC 6026D MISS OPTION 22G ET

P44035386 — Calved: 3/3/19 — Tattoo: LE 22G

C STOCKMAN 2059 ET (CHB)(DLF,HYF,IEF)
B&C STOCK OPTION 6026D ET (DLF,HYF,IEF,MSUDF)
43719224 B&C MISS TOP GUN 2031Z 1ET (DLF,HYF,IEF,MSUDF)

NJW 98S R117 RIBEYE 88X ET (SOD)(DLF,HYF,IEF,MSUDF)
C NOTICE ME ET (DLF,HYF,IEF)
GH ADAMS TOP GUN ET 516T (DLF,HYF,IEF)
B&C MS CHRISTI 27031 (DLF,IEF)

PURPLE MILSAP 45S (SOD)(DLF,HYF,IEF)
JB REMETEE 213 (DLF,HYF,IEF)
P43056323 WPH BAILEY 3P (DLF,IEF)

BR MOLER ET (CHB)(DLF,IEF)
JH MISS SUSIE 06L
REMITALL ONLINE 122L (SOD)(CHB)(DLF,HYF,IEF)
FJ MILK LASS 3F

CE	BW	WW	YW	DMI	SC	SCF	MM	M&G	MCE
-4.9	6.4	60	95	0.1	0.7	10.6	26	56	-0.9
MCW	UDDR	TEAT	CW	FAT	REA	MARB	BMIS	BIIS	CHBS
104	0.90	0.90	76	-0.011	0.69	0.13	291	363	123

- This is one cool made female! Sired by the past NWSS Supreme Champion and out of the notable 213 donor. If you like added power, yet still refined and youthful enough check this one out. Big hiped, wide panned, added foot and bone, long spined and still has the smoothness through her front 1/3. Bred to be a banner chaser and has all the right parts to do just that!



Lot 6 — LCC 6026D Miss Option 22G ET



LCC 1326 REMETEE 1G ET

P44035269 — Calved: 1/5/19 — Tattoo: LE 1G

STAR TCF LOCK-N-LOAD 300W ET (DLF,HYF,IEF)
TFR KU ROLL THE DICE 1326 (DLF,HYF,IEF)
43477667 LH LANGFORD LADY 0253 ET (DLF,HYF,IEF)

LAGRAND RELOAD 80P ET (SOD)(CHB)(DLF,HYF,IEF)
STAR TCF ADV ORALEE 173P ET (DLF,HYF,IEF)
THM DURANGO 4037 (SOD)(DLF,HYF,IEF)
LPG 59K INDEPENDENCE LASS 22N

PURPLE MILSAP 45S (SOD)(DLF,HYF,IEF)
JB REMETEE 213 (DLF,HYF,IEF)
P43056323 WPH BAILEY 3P (DLF,IEF)

BR MOLER ET (CHB)(DLF,IEF)
JH MISS SUSIE 06L
REMITALL ONLINE 122L (SOD)(CHB)(DLF,HYF,IEF)
FJ MILK LASS 3F

CE	BW	WW	YW	DMI	SC	SCF	MM	M&G	MCE
-4.4	5.3	65	105	0.3	0.9	9.2	20	53	-2.7
MCW	UDDR	TEAT	CW	FAT	REA	MARB	BMIS	BIIS	CHBS
122	1.10	1.10	93	0.019	0.77	0.08	282	355	140

- Here is a powerhouse female. Huge legged, big hiped, big bodied and super long. She inherits an added punch from her notable mother and should be extremely competitive and turn into a breeding piece!



Lot 7A — LCC 1326 Remetee 1G ET



LCC 1326 MISS JACKPOT 15G ET

P44035357 — Calved: 2/6/19 — Tattoo: LE 15G

CE	BW	WW	YW	DMI	SC	SCF	MM	M&G	MCE
-4.4	5.3	65	105	0.3	0.9	9.2	20	53	-2.7
MCW	UDDR	TEAT	CW	FAT	REA	MARB	BMIS	BIIS	CHBS
122	1.10	1.10	93	0.019	0.77	0.08	282	355	140

- The second of two full sisters and built a lot alike. This one offers a ton of power, but is still refined and reads like a female. These two will stand some competition and be big time tools in production. Buy with confidence!



Lot 7B — LCC 1326 Miss Jackpot 15G ET



Sire of Lots 7A and 7B —
TFR KU Roll The Dice 1326



Sire of Lot 6 —
B&C Stock Option 6026D ET



Maternal sib to high seller in 2018 Sale

Miss Sundrop 5160 / Remetee 213 Family



Lot 8A — LCC LRF Sun Set 3G ET



Lot 8B — LCC LRF Sun Drop 2G ET



Lot 8C — LCC LRF Shytown 8G ET



LCC FBF Miss Sun Drop 5160 ET —
Dam of Lots 8A-8C



KOLT Chicago 2004 ET —
Sire of Lots 8A-8C



JB Remetee 213 —
Grandam of Lots 8A-8C



LCC LRF SUN SET 3G ET

P44049376 — Calved: 1/12/19 — Tattoo: LE 3G

CRR 719 CATAPULT 109 (DLF,HYF,IEF)
KOLT CHICAGO 2004 ET (DLF,HYF,IEF)
P43724295 CHEZ STRAWBERRY WINE ET 204Z (DLF,HYF,IEF)

TH 122 711 VICTOR 719T (SOD)(DLF,HYF,IEF,MSUDF)
CRR 4037 ECLIPSE 808 (DLF,HYF,IEF)
CRR ABOUT TIME 743 (SOD)(DLF,HYF,IEF)
R SWEET RED WINE 039 (DLF,HYF,IEF)

AH JDH CRACKER JACK 26U ET (SOD)(DLF,HYF,IEF)
LCC FBF MISS SUN DROP 5160 ET (DLF,HYF,IEF,MSUDF)
P43662817 JB REMETEE 213 (DLF,HYF,IEF)

NJW 1Y WRANGLER 19D (SOD)(DLF,HYF,IEF)
CRR D03 VIOLET 349 (DLF,HYF,IEF)
PURPLE MILSAP 45S (SOD)(DLF,HYF,IEF)
WPH BAILEY 3P (DLF,IEF)

CE	BW	WW	YW	DMI	SC	SCF	MM	M&G	MCE
-1.0	3.0	58	93	0.0	0.6	16.5	25	53	-2.1
MCW	UDDR	TEAT	CW	FAT	REA	MARB	BMIS	BIIS	CHBS
112	1.30	1.30	74	0.019	0.55	0.08	369	441	118

- Here are the first of two full sisters representing the first two ET calves out of the Sun Drop donor that we anticipate big things from after seeing these. Sun drop is a direct daughter of the notable 213 donor that was shown very successfully by David Smith and has developed into a mouth-watering young female. 3G offers so much rib, mass and power but does it in a very ladylike and attractive package. She's massive bodied, wide pinned, soft structured, and exceptionally long. This female ties a lot together and should be fun to parade and develop into a big-time breeding piece in the pasture.



LCC LRF SUN DROP 2G ET

P44049375 — Calved: 1/7/19 — Tattoo: LE 2G

CE	BW	WW	YW	DMI	SC	SCF	MM	M&G	MCE
-1.0	3.0	58	93	0.0	0.6	16.5	25	53	-2.1
MCW	UDDR	TEAT	CW	FAT	REA	MARB	BMIS	BIIS	CHBS
112	1.30	1.30	74	0.019	0.55	0.08	369	441	118

- The second of the full sisters and we go back and forth on which one is better. 2G, opens up behind her shoulder into a bold rib cage, with added depth of rib and flank. She ties into a big hip, leaves you wide, yet still blends into a smooth shoulder and sexy front end. A very fault free female that will gather your attention and make a splash at the end of the halter. Find these two!



LCC LRF SHYTOWN 8G ET

P44049377 — Calved: 1/28/19 — Tattoo: LE 8G

CE	BW	WW	YW	DMI	SC	SCF	MM	M&G	MCE
-1.0	3.0	58	93	0.0	0.6	16.5	25	53	-2.1
MCW	UDDR	TEAT	CW	FAT	REA	MARB	BMIS	BIIS	CHBS
112	1.30	1.30	74	0.019	0.55	0.08	369	441	118

- A full brother to two impressive sisters and a great young herd sire in the making himself. With the potential his sisters have it may be a smart investment to say you have a full brother to them walking your pastures. Built and bred to enhance the next generation with added quality, rib, structure and eye appeal. Study your needs at what this guy offers there's major breeding value in this young rascal. Actual BW 80 lb.
- Retaining 1/3 semen interest.



Kylie 2137 Family



LCC 612 ROLL ON KYLIE 7G ET

44035326 — Calved: 1/27/19 — Tattoo: LE 7G

CHURCHILL SENSATION 028X (SOD)(DLF,HYF,IEF)
CRR 028X ROLL TIDE 612 (CHB)(DLF,HYF,IEF,MSUDF)
43295395 CRR 83Y AMBER 418 (DLF,HYF,IEF,MSUDF)

UPS DOMINO 3027 (SOD)(DLF,HYF,IEF,MSUDF)
CHURCHILL LADY 7202T ET (DLF,HYF,IEF)
NJW 98S 100W HANDSHAKE 83Y (CHB)(DLF,HYF,IEF)
CRR 021 AMBER 2102

GOLDEN OAK OUTCROSS 18U (SOD)(CHB)(DLF,HYF,IEF,MSUDF)
H GO LCC KYLIE 2137 ET (DLF,HYF,IEF,MSUDF)
43295315 GO MS 7195 ADVANCE W39 (DLF,HYF,IEF)

GOLDEN-OAK FUSION 3S (DLF,HYF,IEF,MSUDC)
GOLDEN-OAK 60D MALLORY 15M
HH ADVANCE 7195T (SOD)(DLF,HYF,IEF)
GO MS 3196 ADVANCE S34

CE	BW	WW	YW	DMI	SC	SCF	MM	M&G	MCE
0.6	3.5	62	99	0.6	1.6	19.6	35	66	3.3
MCW	UDDR	TEAT	CW	FAT	REA	MARB	BMI\$	BIIS	CHBS
79	1.20	1.20	74	-0.001	0.54	0.10	398	477	106

- One of our favorite females coming home from the co-op ET herd. This female is ultra-smooth and attractive with an undeniable look and presence about her. She's so feminine headed, long necked and ties in high at the top side of her shoulder. She opens into a big bid section with added lower rib sweep, is level hiped and moves with ease. This one will hunt with the best of them next summer and fall as a yearling. Buy with confidence on one of the really good ones selling!



Lot 9A — LCC 612 Roll On Kylie 7G ET



LCC 612 KYLIE'S TIDE 23G ET

44035388 — Calved: 3/7/19 — Tattoo: LE 23G

CE	BW	WW	YW	DMI	SC	SCF	MM	M&G	MCE
0.6	3.5	62	99	0.6	1.6	19.6	35	66	3.3
MCW	UDDR	TEAT	CW	FAT	REA	MARB	BMI\$	BIIS	CHBS
79	1.20	1.20	74	-0.001	0.54	0.10	398	477	106

- 7G's younger sister and nearly a spitting version of her. This female is extremely youthful and attractive in her design, yet opens into a bold rib cage with added upper hip and pin width. These Kylie females have developed into awesome females in production and these two should be right there with them. Tremendous amount of breeding, and power behind these two with the visual traits to set them apart.



Lot 9B — LCC 612 Kylie's Tide 23G ET



LCC 2214 KYLIE SUE 4G ET

44035317 — Calved: 1/24/19 — Tattoo: LE 4G

CRR ABOUT TIME 743 (SOD)(DLF,HYF,IEF)
CHAC MASON 2214 (CHB)(DLF,HYF,IEF)
P43303660 GKB 31 GRACE 7100 (DLF,HYF,IEF)

THM DURANGO 4037 (SOD)(DLF,HYF,IEF)
CRR D03 CASSIE 206 (DLF,HYF,IEF)
CCLC GKB PURE GOLD 31
L STAR GOLDIE P153

GOLDEN OAK OUTCROSS 18U (SOD)(CHB)(DLF,HYF,IEF,MSUDF)
H GO LCC KYLIE 2137 ET (DLF,HYF,IEF,MSUDF)
43295315 GO MS 7195 ADVANCE W39 (DLF,HYF,IEF)

GOLDEN-OAK FUSION 3S (DLF,HYF,IEF,MSUDC)
GOLDEN-OAK 60D MALLORY 15M
HH ADVANCE 7195T (SOD)(DLF,HYF,IEF)
GO MS 3196 ADVANCE S34

CE	BW	WW	YW	DMI	SC	SCF	MM	M&G	MCE
0.7	4.5	52	86	0.3	0.9	18.3	27	53	3.4
MCW	UDDR	TEAT	CW	FAT	REA	MARB	BMI\$	BIIS	CHBS
97	1.20	1.10	74	-0.001	0.69	-0.10	377	432	111

- As striking of a female in the offering. Always one that grabs your attention when going through things. Cosmetically unique as a horned female to be this dark cherry red, and red to the ground. A feature that's show to draw in the judge, past that she's darn good. Extra length of body, and boldness of rib, big hiped, wide made and still as smooth and attractive through her front end as you want. This is one you'll find yourself gravitating back to and rightfully so!



Lot 10 — LCC 2214 Kylie Sue 4G ET



H GO LCC Kylie 2137 —
Dam of Lots 9A-9B and Lot 10



CRR 028X Roll Tide 612 —
Sire of Lots 9A-9B



LCC 6964 Queen Bee 43F ET —
Maternal sib to Lots 9A-9B and Lot 10
The \$120,000 HYFA Lot 1 in the 2019 Mile High Sale, NWSS

Miss Remedy 7197 Family



BLL LCC 76R MISS REMEDY 7197 (DOD)(DLF,HYF,IEF,MSUDF)

P42869479 — Calved: 11/4/07 — Tattoo: BE 7197

CE	BW	WW	YW	DMI	SC	SCF	MM	M&G	MCE
2.6	3.0	51	83	0.1	0.7	11.4	20	46	0.1
MCW	UDDR	TEAT	CW	FAT	REA	MARB	BMS	BIIS	CHBS
90	1.20	1.20	64	-0.001	0.38	0.08	274	336	103

- Here is the Remedy donor that has done so much for Blake and Morgan. She continually stamps her progeny with structural integrity and quality time after time. Several daughters remain in the herd and are outstanding in production with added milk flow and udder quality. This female still has a lot to offer!
- Sells safe to JTH SC Playmaker 22C ET.



MKL LCC REMEDY 987G

P44031922 — Calved: 4/3/19 — Tattoo: LE 987G

CE	BW	WW	YW	DMI	SC	SCF	MM	M&G	MCE
2.5	3.1	51	80	0.3	1.0	11.4	25	50	2.6
MCW	UDDR	TEAT	CW	FAT	REA	MARB	BMS	BIIS	CHBS
90	1.20	1.20	67	-0.001	0.42	0.01	269	326	100

- The natural baby alongside the 7197 donor and a special individual. Sired by a bull we purchased for clean-up work and he sure covered the need. This young gal is superb in her structure, good lined, level hiped with the right kind of rib shape to progress and make a yearling. Study the pieces this one offers!



MKL LCC MAKIN MEMORIES 18G ET

P44035375 — Calved: 2/17/19 — Tattoo: LE 18G

CE	BW	WW	YW	DMI	SC	SCF	MM	M&G	MCE
-1.8	4.3	57	91	0.2	0.8	14.4	24	52	-0.4
MCW	UDDR	TEAT	CW	FAT	REA	MARB	BMS	BIIS	CHBS
91	1.20	1.30	63	-0.021	0.38	0.10	320	391	103

- This is a standout female that may very well be 7197's best to date. Just confirmation she can still produce them and should add value to her mother selling. 18G is the kind! Long made, the right kind of rib shape to develop into a big one, a sound running gear with good feet. She too is made beautifully through her front end and has more than enough power and mass throughout. There's so much good to be said about this one, we'll just let her do the talking. Take note of this one!



Lot 11 — BLL LCC 76R Miss Remedy 7197



Lot 11A — MKL LCC Remedy 987G



Lot 12 — MKL LCC Makin Memories 18G ET



JTH SC Playmaker 22C ET — Sire of Lot 12 and reference sire of many progeny



B&C Stock Option 6026D ET — Reference sire to many progeny in the sale



H2 10Y 7183 Doc Holliday 5804 — Reference sire to many progeny in the sale



LCC BCC Lumbarjack eF ET — Reference sire to many progeny in the sale

Miss Remedy 7197 Family

13A
COW

MKL LCC 480 TRAVELIN GAL 9G ET

P44035330 — Calved: 2/2/19 — Tattoo: LE 9G

RST TIMES A WASTIN 0124 (SOD)(CHB)(DLF,HYF,IEF)
LCC FBF TIME TRAVELER 480 (DLF,HYF,IEF,MSUDF)
P43475752 JB REMETEE 213 (DLF,HYF,IEF)

CRR ABOUT TIME 743 (SOD)(DLF,HYF,IEF)
RST MS 1000 BLAZER 2029 (DOD)(DLF,HYF,IEF)
PURPLE MILSAP 45S (SOD)(DLF,HYF,IEF)
WPH BAILEY 3P (DLF,IEF)

STAR LCC 115N DEAD EYE 76R ET
BLL LCC 76R MISS REMEDY 7197 (DOD)(DLF,HYF,IEF,MSUDF)
P42869479 MF 62N REMY 303N 511R

STAR 12G PALLIADIN 115N
STAR VELVET DEVEE 15L
MF MSU NAVAHO 303N
MSU OPTIMA 62N (DLF,IEF)

CE	BW	WW	YW	DMI	SC	SCF	MM	M&G	MCE
0.6	3.4	58	95	0.3	0.7	12.7	21	50	1.0
MCW	UDDR	TEAT	CW	FAT	REA	MARB	BMI\$	BIIS	CHBS
103	1.20	1.20	72	-0.021	0.52	0.05	302	369	114

- The first of two full sisters that offer a lot of good! 9G is super good at the ground and moves like a cat. She too is extra big bodied with added rib and power and is set wide out of her hip and pins. This one's basic built is super good and we're confident you'll agree.



Lot 13A — MKL LCC 480 Travelin Gal 9G ET

13B
COW

MKL LCC TRAVELIN REMY 10G ET

P44035347 — Calved: 2/3/19 — Tattoo: LE 10G

CE	BW	WW	YW	DMI	SC	SCF	MM	M&G	MCE
0.6	3.4	58	95	0.3	0.7	12.7	21	50	1.0
MCW	UDDR	TEAT	CW	FAT	REA	MARB	BMI\$	BIIS	CHBS
103	1.20	1.20	72	-0.021	0.52	0.05	302	369	114

- The second of the full sisters and built a lot alike. This one opens out of the back side of her shoulder with extra rib and boldness throughout. She's square built, slender necked and good chested and should find herself at the top end just on her quality alone. Bid and buy with confidence.



Lot 13B — MKL LCC Travelin Remy 10G ET

13C
BULL

MKL LCC TRAVELING MAN 12G ET

P44035349 — Calved: 2/4/19 — Tattoo: LE 12G

CE	BW	WW	YW	DMI	SC	SCF	MM	M&G	MCE
0.6	3.4	58	95	0.3	0.7	12.7	21	50	1.0
MCW	UDDR	TEAT	CW	FAT	REA	MARB	BMI\$	BIIS	CHBS
103	1.20	1.20	72	-0.021	0.52	0.05	302	369	114

- Here is a bull calf that has been a barn favorite since day one. If you need to inject quality and structural correctness then here's your candidate. He's super good looking, flat shouldered, long topped. Level hiped, deep sided and hits track on a really good set of feet and legs. A logical choice to enhance the next generation with a power cow behind him. Act. BW 74 lb.
- Retaining 1/3 semen interest.



Lot 13C — MKL LCC Traveling Man 12G ET



LCC FBF Time Traveler 480 —
Reference sire to
many progeny in the sale



K Rustic 711 ET —
Reference sire to
many progeny in the sale



BLL LCC Sin City 4134 ET —
Reference sire to
many progeny in the sale



LCC 44573 Leonard Wood 48F ET —
Reference sire to
many progeny in the sale

WWW.LOWDERMAN.COM

9

ILLINI TOP CUT 2019 — SEPTEMBER 15, 2019

ET Calves out of Proven Donors



Lot 14 — LCC TJ CAL Cher 17G ET



KJ BJ 686Z Cher 753D ET —
Dam of Lot 14



Lot 15 — CAL LCC Ms Vitalized 30G ET



Purple WRB RH Genesis 2714 ET —
Dam of Lot 15



Lot 16 — RJL LCC 22C Adora 24G ET



BBH 743 Adora 339A —
Dam of Lot 16



LCC TJ CAL CHER 17G ET

44046069 — Calved: 2/15/19 — Tattoo: LE 17G

C STOCKMAN 2059 ET (CHB)(DLF,HYF,IEF)
B&C STOCK OPTION 6026D ET (DLF,HYF,IEF,MSUDF)
43719224 B&C MISS TOP GUN 20312 1ET (DLF,HYF,IEF,MSUDF)

NJW 98S R117 RIBEYE 88X ET (SOD)(DLF,HYF,IEF,MSUDF)
C NOTICE ME ET (DLF,HYF,IEF)
GH ADAMS TOP GUN ET 516T (DLF,HYF,IEF)
B&C MS CHRISTI 27031 (DLF,IEF)

UPS SENSATION 2296 ET (DLF,HYF,IEF,MSUDF)
KJ BJ 686Z CHER 753D ET (DLF,HYF,IEF)
P43770770 KJ 968R ZSA ZSA 686Z ET (DLF,HYF,IEF)

CHURCHILL SENSATION 028X (SOD)(DLF,HYF,IEF)
UPS JT MISS NEON 7811 1ET (DLF,HYF,IEF)
MSU TCF REVOLUTION 4R (SOD)(CHB)(DLF,HYF,IEF)
KJ 2403 ROBINETTE 968R (DLF,HYF,IEF)

CE	BW	WW	YW	DMI	SC	SCF	MM	M&G	MCE
-2.2	5.0	63	97	0.3	0.9	14.2	29	61	0.9
MCW	UDDR	TEAT	CW	FAT	REA	MARB	BMIS	BIIS	CHBS
97	1.20	1.20	73	0.009	0.63	0.15	332	412	110

- This is one of the really nice ones in the offering. She's put together awfully well and is hard to put a hole in. Ultra-eye catching, massive in her mid-rib design, added stoutness and feature, yet feminine throughout. She's bred to be a big league contender and she shows through visually.



CAL LCC MS VITALIZED 30G ET

44035989 — Calved: 4/2/19 — Tattoo: LE 30G

C STOCKMAN 2059 ET (CHB)(DLF,HYF,IEF)
B&C STOCK OPTION 6026D ET (DLF,HYF,IEF,MSUDF)
43719224 B&C MISS TOP GUN 20312 1ET (DLF,HYF,IEF,MSUDF)

NJW 98S R117 RIBEYE 88X ET (SOD)(DLF,HYF,IEF,MSUDF)
C NOTICE ME ET (DLF,HYF,IEF)
GH ADAMS TOP GUN ET 516T (DLF,HYF,IEF)
B&C MS CHRISTI 27031 (DLF,IEF)

PURPLE CHACHI 65Z ET (DLF,HYF,IEF)
PURPLE WRB RH GENESIS 2714 ET (DLF,HYF,IEF)
P43516385 PURPLE FBF SURI 24Z ET

PURPLE CURRENCY 24U ET (DLF,HYF,IEF)
PURPLE CMCC CARMELLA 1P (DLF,HYF,IEF)
CRR ABOUT TIME 743 (SOD)(DLF,HYF,IEF)
PURPLE HENNESSEY 44T ET (DLF,HYF,IEF)

CE	BW	WW	YW	DMI	SC	SCF	MM	M&G	MCE
-3.4	5.4	55	88	0.0	0.8	12.9	24	52	0.2
MCW	UDDR	TEAT	CW	FAT	REA	MARB	BMIS	BIIS	CHBS
100	1.10	1.10	66	-0.021	0.58	0.06	309	373	111

- Here is an exceptional younger ET calf that has a ton of potential. Her mother was a high seller and sale attraction last year selling 1/2 embryo interest to Moss Neck Herefords. We think 30G is built for the long haul and should make an incredible yearling. Aired by the past supreme champion in Denver. She is sweet necked, good lines, awesome at the ground with the right kind of rib shape. This is one that will be awfully fun to watch develop. Good things to come for this one!!



RJL LCC 22C ADORA 24G ET

P44035392 — Calved: 3/8/19 — Tattoo: LE 24G

NJW 98S R117 RIBEYE 88X ET (SOD)(DLF,HYF,IEF,MSUDF)
JTH SC PLAYMAKER 22C ET (DLF,HYF,IEF,MSUDF)
P43622090 STAR KKH SSF MIRROR IMAGE 286W (DLF,HYF,IEF,MSUDF)

SHF RIB EYE M326 R117 (SOD)(DLF,HYF,IEF)
NJW 9126J DEW DOMINO 98S (DOD)(DLF,HYF,IEF)
MSU TCF TITLEIST 2T ET (DLF,HYF,IEF)
STAR KKH BRITE KESSIE 266S ET (DLF,HYF,IEF)

CRR ABOUT TIME 743 (SOD)(DLF,HYF,IEF)
BBH 743 ADORA 339A (DLF,HYF,IEF,MSUDF)
P43407019 BBH 711 TAN YA 911W (DOD)

THM DURANGO 4037 (SOD)(DLF,HYF,IEF)
CRR D03 CASSIE 206 (DLF,HYF,IEF)
DRF JWR PRINCE VICTOR 711 (SOD)(DLF,HYF,IEF,MSUDF)
BBH 427P TAN YA 756T

CE	BW	WW	YW	DMI	SC	SCF	MM	M&G	MCE
-4.5	5.1	63	99	0.1	1.0	19.3	26	57	-1.8
MCW	UDDR	TEAT	CW	FAT	REA	MARB	BMIS	BIIS	CHBS
111	1.20	1.10	62	-0.031	0.39	-0.02	391	463	102

- Here is an own daughter of the notable Adora female making her a maternal sub to two past JNHE reserve champions. This female is built nearly ideal, and is extra true and good at the ground from a structure standpoint. She's square built, bold ribbed, attractive, yet has a little extra punch. Study this one as we feel she could follow in her sister's footsteps.

17
COW

SULL DIANA 5469 ET (DLF,HYF,IEF,MSUDF)

43620814 — Calved: 3/14/15 — Tattoo: LE 5469C

NJW 98S R117 RIBEYE 88X ET (SOD)(DLF,HYF,IEF,MSUDF) SHF RIB EYE M326 R117 (SOD)(DLF,HYF,IEF)
 NJW 9126J DEW DOMINO 98S (DOD)(DLF,HYF,IEF)
 C MILES MCKEE 2103 ET (CHB)(DLF,HYF,IEF,MSUDF) C-S PURE GOLD 98170 (SOD)(CHB)(DLF,HYF,IEF)
 43270668 C NOTICE ME ET (DLF,HYF,IEF) HH MISS ADVANCE 104A (DOD)
 CRR ABOUT TIME 743 (SOD)(DLF,HYF,IEF) THM DURANGO 4037 (SOD)(DLF,HYF,IEF)
 TCC MS DIANA 01 (DLF,HYF,IEF) CRR D03 CASSIE 206 (DLF,HYF,IEF)
 P43132180 TCC MISS SHELBY 82 ET (DLF,HYF,IEF) ANKONIAN MIDAS 72
 LCC TWO TIMIN 438 ET (DLF,HYF,IEF)

CE	BW	WW	YW	DMI	SC	SCF	MM	M&G	MCE
1.1	2.2	47	76	-0.2	0.7	18.9	32	55	1.3
MCW	UDDR	TEAT	CW	FAT	REA	MARB	BMI\$	BIIS	CHBS
100	1.50	1.40	63	-0.021	0.54	0.05	395	456	108

- We wanted to offer the opportunity to get in on the ground floor of what we feel will be a major cornerstone and breeding piece for years to come. An own daughter of the notable Diana, with a power packed pedigree and a flawless phenotypic design. She has all the right parts to enhance the next generation with superior quality and the value-added revenue generating kind we are all seeking.
- Selling ½ interest.
- Lot 17A: Steer calf born April 27, 2019, sired by ECR Chosen One 6215.



Lot 17 — SULL Diana 5469 ET

18
COW

C&T 86S LATTE 28U

P43353323 — Calved: 2/23/08 — Tattoo: RE VOB 28U

CE	BW	WW	YW	DMI	SC	SCF	MM	M&G	MCE
-2.6	5.1	52	85	0.2	1.0	12.3	15	41	-1.8
MCW	UDDR	TEAT	CW	FAT	REA	MARB	BMI\$	BIIS	CHBS
102	1.40	1.30	64	-0.001	0.42	-0.13	274	323	98

- This is a unique female that offers an outcross pedigree. Visually she's phenomenal, huge footed with added bone, massive in her rib and body yet still ties it into a smooth and attractive package. We did flush this female a few times and should have utilized her more. This one has A Lot to offer and she's just one mating or IVF from knocking it out of the park.



Lot 18 — C&T 86S Latte 28U

18A
COW

LCC 22C DANDY LION 9114

P44031951 — Calved: 5/12/19 — Tattoo: LE 9114

NJW 98S R117 RIBEYE 88X ET (SOD)(DLF,HYF,IEF,MSUDF) SHF RIB EYE M326 R117 (SOD)(DLF,HYF,IEF)
 JTH SC PLAYMAKER 22C ET (DLF,HYF,IEF,MSUDF) NJW 9126J DEW DOMINO 98S (DOD)(DLF,HYF,IEF)
 P43622090 STAR KKH SSF MIRROR IMAGE 286W (DLF,HYF,IEF,MSUDF) MSU TCF TITLEIST 2T ET (DLF,HYF,IEF)
 STAR KKH BRITE KESSIE 266S ET (DLF,HYF,IEF)
 ANL 36N SHILO 86S HF 4L BEYOND 36N (SOD)(DLF,HYF,IEF)
 C&T 86S LATTE 28U ANL 60D BANNER GIRL 1K (DLF,HYF,IEF)
 P43353323 C&T 2E MOCHA 35M RU TRACKER 2E
 RU 16Y COWGIRL 44G

CE	BW	WW	YW	DMI	SC	SCF	MM	M&G	MCE
-4.3	5.3	57	92	0.2	1.0	14.8	22	50	-1.3
MCW	UDDR	TEAT	CW	FAT	REA	MARB	BMI\$	BIIS	CHBS
97	1.30	1.30	63	-0.021	0.40	0.00	320	384	100

- The youngest of the offering and certainly not the shortest on quality. Her mother is mouth watering to lay eyes on and this gal has a tremendous future. The Playmakers are built right and are making outstanding females. A whole different division here!



Lot 18 — SULL Diana 5469 ET

Young Kiwi 116 Daughters in Production



Lot 19 —
LCC 480 Berry Patches 705 ET



LCC Patton Kiwi 116 ET —
Dam of Lots 19, 20 and 21



Lot 19A — LCC 028X Sugar Sweet 908



Lot 20 — LCC SHF TR Sweet & Sour 532



LCC 480 BERRY PATCHES 705 ET

P43812177 — Calved: 1/8/17 — Tattoo: LE 705

CE	BW	WW	YW	DMI	SC	SCF	MM	M&G	MCE
-1.3	4.2	61	104	0.4	1.0	13.9	21	52	1.3
MCW	UDDR	TEAT	CW	FAT	REA	MARB	BMI\$	BIIS	CHBS
117	1.10	1.10	78	-0.021	0.62	0.06	328	399	122

- Here is a 2-year-old we should probably be retaining. She's sired by past national champion Time Traveler and out the notable 116 donor. A full sister was reserve champion at the NWSS for Morgan, and another was an Illini State Preview Show champion for the Much family. This sweetheart is doing an awesome job in production with one of the really good heifer babies alongside ET or natural. This one has the "goods" to see the donor pen someday.



LCC 028X SUGAR SWEET 908

44035239 — Calved: 1/10/19 — Tattoo: LE 908

CE	BW	WW	YW	DMI	SC	SCF	MM	M&G	MCE
5.1	1.0	55	87	0.2	1.4	18.9	35	63	3.6
MCW	UDDR	TEAT	CW	FAT	REA	MARB	BMI\$	BIIS	CHBS
62	1.30	1.40	72	0.019	0.56	0.20	399	477	111

CE	BW	WW	YW	DMI	SC	SCF	MM	M&G	MCE
5.1	1.0	55	87	0.2	1.4	18.9	35	63	3.6
MCW	UDDR	TEAT	CW	FAT	REA	MARB	BMI\$	BIIS	CHBS
62	1.30	1.40	72	0.019	0.56	0.20	399	477	111

- One of the farm favorites! Exceptional quality, structure, eye appeal with added body and presence about her. Sired by the popular 028X and inherits tremendous power and quality from the bottom side. Check this one out!



LCC SHF TR SWEET & SOUR 532

43592218 — Calved: 1/26/15 — Tattoo: LE 532

CE	BW	WW	YW	DMI	SC	SCF	MM	M&G	MCE
2.3	2.5	56	97	0.3	1.1	17.3	18	46	3.8
MCW	UDDR	TEAT	CW	FAT	REA	MARB	BMI\$	BIIS	CHBS
116	1.30	1.20	73	-0.031	0.52	0.00	370	435	118

- Another direct daughter of the notable 116 donor and is a great young producing momma with amazing years ahead of her. She's the big ribbed, huge bodied, easy keeping, heavy milking kind. A great young herd matron with instant notoriety entering your pasture.
- Pasture exposed to LCC 612 Presidente 45F ET from June 1, 2019 to Aug. 1, 2019.



LCC 118E HOT SAUCE 9117

P44031956 — Calved: 5/25/19 — Tattoo: LE 9117

CE	BW	WW	YW	DMI	SC	SCF	MM	M&G	MCE
0.7	3.4	55	90	0.4	1.3	14.4	24	51	3.6
MCW	UDDR	TEAT	CW	FAT	REA	MARB	BMI\$	BIIS	CHBS
103	1.30	1.20	71	-0.011	0.50	-0.04	316	375	106

CE	BW	WW	YW	DMI	SC	SCF	MM	M&G	MCE
0.7	3.4	55	90	0.4	1.3	14.4	24	51	3.6
MCW	UDDR	TEAT	CW	FAT	REA	MARB	BMI\$	BIIS	CHBS
103	1.30	1.20	71	-0.011	0.50	-0.04	316	375	106

- Stylish young bull calf that has a ton of potential.

Young Kiwi 116 Daughters in Production



Lot 21 —
LCC 0124 Miss Keepin Time504ET



LCC Patton Kiwi 116 ET —
Donor Dam



Lot 21A — LCC 22C Kiwi Maker 979



LCC 0124 MISS KEEPIN TIME504ET

43595430 — Calved: 1/3/15 — Tattoo: LE 504

CE	BW	WW	YW	DMI	SC	SCF	MM	M&G	MCE
1.6	2.6	57	97	0.3	1.1	17.3	18	46	3.4
MCW	UDDR	TEAT	CW	FAT	REA	MARB	BMIS	BIIS	CHBS
116	1.20	1.20	73	-0.031	0.52	0.00	370	435	118

- Here is a powerful female that's bred to see an ET program. Obviously, a direct daughter of the cornerstone 116 donor and sired by past NWSS supreme champion RST Times A Wastin. This female is massive in her design, huge ribbed and bodied, with added foot and bone all in an attractive package. She's young with a tremendous future ahead of her. Buy with confidence on one of the good ones selling!
- Believed safe AI to NJW 76S 27A Long Range 203D ET on April 21, 2019, then pasture exposed to JTH SC Playmaker 22C ET from May 1, 2019 to Aug. 1, 2019.



LCC 22C KIWI MAKER 979

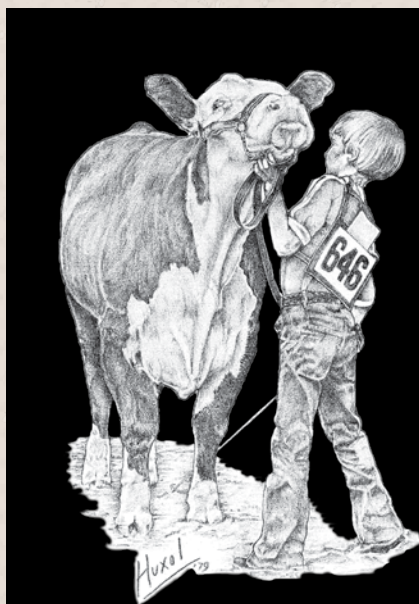
P44031908 — Calved: 3/19/19 — Tattoo: LE 979

NJW 98S R117 RIBEYE 88X ET (SOD)(DLF,HYF,IEF,MSUDF)	SHF RIB EYE M326 R117 (SOD)(DLF,HYF,IEF)
JTH SC PLAYMAKER 22C ET (DLF,HYF,IEF,MSUDF)	NJW 9126J DEW DOMINO 98S (DOD)(DLF,HYF,IEF)
P43622090 STAR KKH SSF MIRROR IMAGE 286W (DLF,HYF,IEF,MSUDF)	MSJ TCF TITLEIST 2T ET (DLF,HYF,IEF)
	STAR KKH BRITE KESSIE 266S ET (DLF,HYF,IEF)

RST TIMES A WASTIN 0124 (SOD)(CHB)(DLF,HYF,IEF)	CRR ABOUT TIME 743 (SOD)(DLF,HYF,IEF)
LCC 0124 MISS KEEPIN TIME504ET	RST MS 1000 BLAZER 2029 (DOD)(DLF,HYF,IEF)
43595430 LCC PATTON KIWI 116 ET (DLF,HYF,IEF)	SR CG HARD ROCK 5073 (SOD)(DLF,HYF,IEF)
	UPS MISS KOOTENAY 3915 1ET (DLF,HYF,IEF)

CE	BW	WW	YW	DMI	SC	SCF	MM	M&G	MCE
-1.2	3.5	58	96	0.3	1.0	17.3	23	52	1.8
MCW	UDDR	TEAT	CW	FAT	REA	MARB	BMIS	BIIS	CHBS
104	1.20	1.20	68	-0.031	0.45	0.07	366	437	108

- This is a fancy young lady that's bred to make a major impact. Sweet made from end to end and built for the long haul. Good necked, big middle, square built, wide made, and on a sound running gear.



LCC Upcoming Sales and Events

TUESDAY, NOV. 26, 2020

INAUGURAL FALL ONLINE SALE

Auction conducted and hosted by: Lowderman Auction Options

TUESDAY, APRIL 7, 2020

**8TH ANNUAL GENETIC OPPORTUNITY SALE
FALL BORN FEMALE & BULL CALF ONLINE SALE**

Auction conducted and hosted by: Lowderman Auction Options

SPRING 2020

7TH ANNUAL LAST CHANCE ONLINE SALE

Auction conducted and hosted by: Lowderman Auction Options

Mother & Daughter Donor Types



Lot 22 — DJF Becky Bae 74B ET



Lot 22A — LCC 6026D Miss Sure Stock 954



Lot 23 — DJF Emmalina 24D



Lot 23A — LCC 5804 Miss Emma Jean 944



DJF BECKY BAE 74B ET

P43518418 — Calved: 5/5/14 — Tattoo: RE DJF LE 74B

CE	BW	WW	YW	DMI	SC	SCF	MM	M&G	MCE
-3.5	2.6	45	73	0.1	0.7	14.7	19	42	-1.3
MCW	UDDR	TEAT	CW	FAT	REA	MARB	BMS	BIIS	CHBS
81	1.30	1.30	61	0.029	0.42	0.09	314	374	92

- Here is the mother of the noteworthy 24D female, and traces to the notable Red Hills female. A cowboy just needs more of this kind! Easy doing, hard-working, great uddered, sound footed, with extra quality. She never misses and certainly didn't with her coupon on side this year. Put this one towards the top. She'll put a premium on her return!
- AI Bred on April 28 to sexed H FHF Advance 628 ET, then pasture exposed to JTH SC Playmaker 22C ET from May 5, 2019 to Aug. 1, 2019.
- Believed safe to AI date.



LCC 6026D MISS SURE STOCK 954

P44031866 — Calved: 2/27/19 — Tattoo: LE 954

CE	BW	WW	YW	DMI	SC	SCF	MM	M&G	MCE
-2.1	3.5	47	75	0.1	0.8	14.0	24	47	0.9
MCW	UDDR	TEAT	CW	FAT	REA	MARB	BMS	BIIS	CHBS
81	1.10	1.10	64	0.009	0.51	0.15	317	381	101

- A big-time prospect sired by past NWSS Supreme Champion B&C Stock Option. This young lady has all the right parts in all the right places! Good at the ground, big ribbed, square built, and super attractive. She is sure to catch your eye!



DJF EMMALINA 24D

P43698438 — Calved: 2/14/16 — Tattoo: RE DJF LE 24D

CE	BW	WW	YW	DMI	SC	SCF	MM	M&G	MCE
2.5	0.6	49	73	0.0	1.2	19.4	34	58	1.5
MCW	UDDR	TEAT	CW	FAT	REA	MARB	BMS	BIIS	CHBS
44	1.30	1.40	64	0.039	0.46	0.20	394	467	98

- It's been cussed and discussed this may very well one of the be the best females selling. Fault free, practical, awesome uddered and raising one of the best babies. Her dam sells as well, and there is straits to enter an ET program. A pasture full of this kind just smells like \$\$\$.
- AI bred to B&C Stock Option on April 18, 2019, then pasture exposed to JTH SC Playmaker 22C ET from May 1, 2019 to Aug. 1, 2019.
- Believed safe to AI date.



LCC 5804 MISS EMMA JEAN 944

P44031736 — Calved: 2/16/19 — Tattoo: LE 944

CE	BW	WW	YW	DMI	SC	SCF	MM	M&G	MCE
1.9	2.2	52	81	0.1	1.2	15.9	31	57	0.3
MCW	UDDR	TEAT	CW	FAT	REA	MARB	BMS	BIIS	CHBS
77	1.30	1.30	67	0.029	0.47	0.16	348	419	104

- The Doc Holiday calves continue to impress us and were highly received at last years sale with tremendous reports. Incorporate the maternal powerhouses on this one's bottom side and it's a logical choice to put this one on the short list!

Daughters of Powerful and Proven Donor Dams



LCC SHF ARIEL 5159

43662805 — Calved: 9/8/15 — Tattoo: LE 5159

CE	BW	WW	YW	DMI	SC	SCF	MM	M&G	MCE
-3.1	4.4	50	79	0.1	0.9	16.1	24	49	0.6
MCW	UDDR	TEAT	CW	FAT	REA	MARB	BMIS	BIIS	CHBS
85	1.20	1.30	65	0.009	0.38	0.16	347	417	101

- One of the sweetest uddered females in the offering that offers extra quality! Her mother is a past donor that did so much for us and is now working at Moss Neck Herefords that was an own daughter of Catalina 24H. 5159 is sired by a bull who left us to early and has produced numerous high sellers for us and the females in production are a no miss. Buy with confidence on a young female that will generate the high quality, added revenue generators for years to come.
- Bred AI to NJW 76S 27A Long Range 203D ET on April 25, 2019, then pasture exposed to JTH SC Playmaker 22C ET from May 1, 2019 to Aug. 1, 2019.



Lot 24 — LCC SHF Ariel 5159



Grndview CMR 24H PromiseY 485ET — Donor Dam of Lot 24



LCC 118E MERMAID 960

P44031873 — Calved: 3/4/19 — Tattoo: LE 960

CE	BW	WW	YW	DMI	SC	SCF	MM	M&G	MCE
-0.2	3.8	50	78	0.3	1.2	13.8	27	52	2.9
MCW	UDDR	TEAT	CW	FAT	REA	MARB	BMIS	BIIS	CHBS
88	1.20	1.20	67	0.009	0.42	0.05	306	367	99

CE	BW	WW	YW	DMI	SC	SCF	MM	M&G	MCE
-0.2	3.8	50	78	0.3	1.2	13.8	27	52	2.9
MCW	UDDR	TEAT	CW	FAT	REA	MARB	BMIS	BIIS	CHBS
88	1.20	1.20	67	0.009	0.42	0.05	306	367	99

- Here is a Clean Slate female that is backed by a phenomenal momma. This young gal is ultra-good structured, wide bodied, square built and attractive. All the ingredients to be the money making kind!



Lot 24A — LCC 118E Mermaid 960



LCC FBF SWEET & SALTY 573 ET

P43600161 — Calved: 2/20/15 — Tattoo: LE 573

CE	BW	WW	YW	DMI	SC	SCF	MM	M&G	MCE
-1.3	4.1	65	100	0.3	0.8	15.1	29	62	0.2
MCW	UDDR	TEAT	CW	FAT	REA	MARB	BMIS	BIIS	CHBS
111	0.90	0.80	80	-0.001	0.68	-0.02	347	417	121

- A true powerhouse female! Out of the immortal 213 donor and sired by Catapult. This one is bred and built to generate high caliber, highly sought, added revenue producing progeny. The boxes are checked for this one to enter the donor pen! 110+ days safe to JTH SC Playmaker 22C ET.



Lot 25 — LCC FBF Sweet & Salty 573 ET



JB Remetee 213 — Donor Dam of Lot 25



LCC 5804 MISS PAYDAY 982

P44031913 — Calved: 3/20/19 — Tattoo: LE 982

CE	BW	WW	YW	DMI	SC	SCF	MM	M&G	MCE
2.0	3.0	57	90	0.2	1.0	13.7	29	58	0.6
MCW	UDDR	TEAT	CW	FAT	REA	MARB	BMIS	BIIS	CHBS
110	1.10	1.00	75	0.009	0.58	0.07	324	392	115

CE	BW	WW	YW	DMI	SC	SCF	MM	M&G	MCE
2.0	3.0	57	90	0.2	1.0	13.7	29	58	0.6
MCW	UDDR	TEAT	CW	FAT	REA	MARB	BMIS	BIIS	CHBS
110	1.10	1.00	75	0.009	0.58	0.07	324	392	115

- A young female that's packed full of power both visually and on paper. She's square, wide, bold ribbed and ready to go. Exceptionally high quality individual!



Lot 25A — LCC 5804 Miss Payday 982

Daughters of Donor Dams



Lot 26 — LCC B293 Ms Dancin Girl 8D ET



Lot 26A — LCC Clean Livin 904



Lot 27 — RST Mat 109 Kat 31C ET



Lot 27A — LCC 174E Ms Frontier Gal 945G

ILLINI TOP CUT 2019 — SEPTEMBER 15, 2019



LCC B293 MS DANCIN GIRL 8D ET

P43709611 — Calved: 3/6/16 — Tattoo: BE 8D

CE	BW	WW	YW	DMI	SC	SCF	MM	M&G	MCE
-5.9	4.7	62	96	0.5	0.7	13.2	27	58	1.8
MCW	UDDR	TEAT	CW	FAT	REA	MARB	BMS	BIIS	CHBS
111	1.20	1.30	67	-0.021	0.50	0.04	301	371	99

- A young female that's packed full of power both visually and on paper. She's square, wide, bold ribbed and ready to go. Exceptionally high quality individual!
- Bred AI on March 27, 2019 to NJW Whitmore, then pasture exposed to JTH SC Playmaker 22C ET from April 10, 2019 to Aug. 1, 2019.



LCC CLEAN LIVIN 904

P44035236 — Calved: 1/3/19 — Tattoo: LE 904

CE	BW	WW	YW	DMI	SC	SCF	MM	M&G	MCE
-3.7	4.7	58	90	0.5	1.1	12.3	28	57	2.4
MCW	UDDR	TEAT	CW	FAT	REA	MARB	BMS	BIIS	CHBS
101	1.20	1.20	68	-0.011	0.48	-0.03	282	343	98

- This is a flat good natural baby sired by a bull we purchased to clean up with that did an outstanding job. Clean Slate's progeny are flawless structured, good built and simply the right kind in terms of function. Buy with confidence on a performance driven high quality female.



RST MAT 109 KAT 31C ET

P43625089 — Calved: 4/1/15 — Tattoo: RE RST LE 31C

CE	BW	WW	YW	DMI	SC	SCF	MM	M&G	MCE
0.5	4.6	63	101	0.3	1.1	16.4	27	58	4.6
MCW	UDDR	TEAT	CW	FAT	REA	MARB	BMS	BIIS	CHBS
90	1.00	1.00	73	-0.011	0.55	-0.10	351	416	115

- This is a power packed female whose dam is a full sister to Olivia the past high selling female at Star Lake's dispersal and sired by one of the leading AI sires, Catapult. She's moderate, square built, big bodied, and raising an outstanding heifer baby.
- Bred AI to sexed H FHF Advance 628 ET on April 18, 2019, then pasture exposed to JTH SC Playmaker 22C ET from May 1, 2019 to Aug. 1, 2019.



LCC 174E MS FRONTIER GAL 945G

P44035243 — Calved: 3/5/19 — Tattoo: LE 945G

CE	BW	WW	YW	DMI	SC	SCF	MM	M&G	MCE
1.9	2.4	63	105	0.7	1.3	16.1	25	56	1.1
MCW	UDDR	TEAT	CW	FAT	REA	MARB	BMS	BIIS	CHBS
108	1.20	1.20	71	0.029	0.55	-0.03	334	404	98

- Sired by last year's high selling bull at Topp's. This female is built for the long haul. Exceptional is her basic design, being square, big ribbed, easy moving, and easy on the eyes. Bred to make a major impact!



GRAND TRINITY D10 (DLF,HYF,IEF,MSUDF)

P43673069 — Calved: 3/11/16 — Tattoo: BE D10

CE	BW	WW	YW	DMI	SC	SCF	MM	M&G	MCE
-0.4	2.1	67	111	0.2	1.5	20.0	27	61	-1.5
MCW	UDDR	TEAT	CW	FAT	REA	MARB	BMI\$	BIIS	CHBS
124	1.40	1.50	78	-0.011	0.70	-0.01	427	503	129

- This is a special 3-year-old that does so many things correctly. Great uddered, heavy milking, good footed, and has extra quality and eye appeal while being supported by a progressive set of performance figures. Buy with confidence on one of the really good performance females selling.
- Bred AI on April 17, 2019 to LCC BCC Laubertack 3T ET, then pasture exposed to JTH SC Playmaker 22C ET from May 1, 2019 to Aug. 1, 2019



Lot 28 — Grand Trinity D10



LCC 7E TRINITY 905

Pending — Calved: 1/6/2019 — Tattoo: LE 905

KF BLUE CHIP 7Z (DLF,HYF,IEF,MSUDF)	H W4 BANKER 9221 ET (DLF,HYF,IEF,MSUDF)
KF BLUE MOON 7E	SCHURMAN MS MAINSTREAM 9060 (DLF,HYF,IEF)
43832882	H5 YANKEE 9131 (DLF,HYF,IEF)
H5 MS 9131 DOMET 4214	H5 MS 246 DOMET 707
CHURCHILL RED BULL 200Z (CHB)(DLF,HYF,IEF,MSUDF)	CHURCHILL SENSATION 028X (SOD)(DLF,HYF,IEF)
GRAND TRINITY D10 (DLF,HYF,IEF,MSUDF)	CHURCHILL LADY 002X ET (DLF,HYF,IEF,MSUDF)
P43673069	GRAND TERA 24B (DLF,HYF,IEF)
	CHURCHILL TARGET 0165X ET (DLF,HYF,IEF,MSUDF)
	CSF BR 435 TEVA 306T ET (DLF,HYF,IEF)

Dam (GE EPDs):

CE	BW	WW	YW	DMI	SC	SCF	MM	M&G	MCE
-0.1	2.1	68	112	0.1	1.5	20.1	27	60	-1.3
MCW	UDDR	TEAT	CW	FAT	REA	MARB	BMI\$	BIIS	CHBS
126	1.40	1.50	79	-0.012	0.71	-0.02	429	505	130

- Here is a top-notch heifer calf sired by past horned calf champion bull at the NWSS Blue Moon. Impeccable at the ground, long spined, attractive, and yet still has the rib, body and power. An elite heifer that's bred to generate after winning ribbons.



Lot 28A — LCC 7E Trinity 905



CLF GCC MISS ENTICER C401

P43622286 — Calved: 4/1/15 — Tattoo: RE CLF LE C401

CE	BW	WW	YW	DMI	SC	SCF	MM	M&G	MCE
0.6	2.9	51	79	0.1	1.0	16.1	20	46	-2.8
MCW	UDDR	TEAT	CW	FAT	REA	MARB	BMI\$	BIIS	CHBS
70	1.30	1.40	61	-0.041	0.37	0.01	336	396	101

- Here is a solid female who will earn her keep. Beautiful uddered, smooth and feminine with the looks to burn. Loaded with quality from end to end and will bring in a high-quality pounds heavy calf year after year. 100+ days safe to JTH SC Playmaker 22C ET.



Lot 29 — CLF GCC Miss Enticer C401



LCC 5804 ENTICE ME 953

P44031863 — Calved: 2/25/19 — Tattoo: LE 953

NJW 73S W18 HOMETOWN 10Y ET (SOD)(CHB)(DLF,HYF,IEF,MSUDF)	SHF WONDER M326 W18 ET (CHB)(DLF,HYF,IEF)
H2 10Y 7183 DOC HOLIDAY 5804 (DLF,HYF,IEF,MSUDF)	NJW P606 72N DAYDREAM 73S (DLF,HYF,IEF,MSUDF)
43687631	RW BF AMANDA 98170 7183 ET (DLF,HYF,IEF)
	C-S PURE GOLD 98170 (SOD)(CHB)(DLF,HYF,IEF)
	RW SNICKERS 8007 1080
GCC JPF EXCITER A222 (DLF,HYF,IEF)	LAKE 002 KILOWATTS 104S (DLF,HYF,IEF)
CLF GCC MISS ENTICER C401	JPF K01 HONEY U30
P43622286	BOYD WORLDWIDE 9050 ET (SOD)(DLF,HYF,IEF,MSUDF)
GOBLE MISSY MAE 243A	GOBLE MIRANDA 401Y

CE	BW	WW	YW	DMI	SC	SCF	MM	M&G	MCE
1.4	2.9	52	82	0.1	1.0	14.2	25	50	-1.7
MCW	UDDR	TEAT	CW	FAT	REA	MARB	BMI\$	BIIS	CHBS
90	1.30	1.30	66	-0.011	0.42	0.07	317	381	104

- These Doc Holidays are easy to find! Square built, high quality, with added performance and growth and 953 is no exception. Show or not, this is one that will be a wise investment come production time.



Lot 29A — LCC 5804 Entice Me 953

Cow Calf Pairs



Lot 30 — LCC A322 Ms Bell 690



LCC A322 MS BELL 690

P43701838 — Calved: 4/3/16 — Tattoo: LE 690

CE	BW	WW	YW	DMI	SC	SCF	MM	M&G	MCE
0.0	3.9	53	83	0.2	0.9	14.8	21	47	0.4
MCW	UDDR	TEAT	CW	FAT	REA	MARB	BMI\$	BIIS	CHBS
85	1.30	1.20	68	-0.021	0.54	-0.01	325	384	107

- One of the farm favorites on pasture tours. She's a model type of female, raised by our friends Bob and Jami Goble with maternal bred through and through back to Git R Done and P606. She's easy on the eyes, good uddered, easy keeping, good footed, long and attractive and will flat raise one.
- 120+ days safe to JTH SC Playmaker 22C ET.



LCC 4134 MISS BELL 974

P44031891 — Calved: 6/21/19 — Tattoo: LE 974

CE	BW	WW	YW	DMI	SC	SCF	MM	M&G	MCE
0.8	3.1	53	86	0.1	0.8	15.4	19	46	1.4
MCW	UDDR	TEAT	CW	FAT	REA	MARB	BMI\$	BIIS	CHBS
93	1.30	1.30	67	-0.031	0.47	-0.02	335	393	110

- A Sin City female that stems from an outstanding cow family. The Sin City's have been terrific in production and this is one that should follow suit. Extra smooth and feminine patterned, up headed, slender necked, long spined, and athletic.



Lot 30A — LCC 4134 Miss Bell 974



SRF KATIE 8GWZB

43727757 — Calved: 5/11/16 — Tattoo: BE 12D

CE	BW	WW	YW	DMI	SC	SCF	MM	M&G	MCE
2.7	4.6	55	89	0.3	0.4	15.4	21	49	1.9
MCW	UDDR	TEAT	CW	FAT	REA	MARB	BMI\$	BIIS	CHBS
96	1.20	1.20	68	-0.021	0.45	-0.02	331	392	107

- One of the really good young cows selling! Nearly ideal in her udder placement/attachment and teat size with added milk flow. She has the tools to be a herd contributor and enhance the next generation. Just buy this kind! They never hurt you.
- Pasture exposed to LCC 612 Presidente 45F ET, a powerful son of Kiwi 116, from June 1, 2019 to Aug. 1, 2019.



Lot 31 — SRF Katie 8GWZB



9118

Calved: 5/27/19 — Tattoo: LE 9118

CE	BW	WW	YW	DMI	SC	SCF	MM	M&G	MCE
2.7	4.6	55	89	0.3	0.4	15.4	21	49	1.9
MCW	UDDR	TEAT	CW	FAT	REA	MARB	BMI\$	BIIS	CHBS
96	1.20	1.20	68	-0.021	0.45	-0.02	331	392	107

- A younger bull calf that has an incredible mother. This guy is attractive, good lined and sound structured. Possible steer prospect that could compete very well.



DS 109 LADY 18D

P43716259 — Calved: 3/7/16 — Tattoo: BE 18D

CE	BW	WW	YW	DMI	SC	SCF	MM	M&G	MCE
-1.6	3.5	56	86	0.2	0.9	21.5	32	60	1.9
MCW	UDDR	TEAT	CW	FAT	REA	MARB	BMIS	BIIS	CHBS
88	1.20	1.10	69	0.009	0.65	-0.06	423	486	103

- One of the hardest working females in the offering! Sweet uddered, heavy milking, super long and attractive and raising a “top notch” heifer calf! Bred to produce “the kind” Catapult x P606 and her baby is proof! Don't forget to mark this one sale day!
- 100+ days safe to JTH SC Playmaker 22C ET.



Lot 32 — DS 109 Lady 18D



LCC 1363 PRETTY LADY 951

P44031857 — Calved: 2/23/19 — Tattoo: LE 951

CE	BW	WW	YW	DMI	SC	SCF	MM	M&G	MCE
-2.2	4.5	53	90	0.1	0.8	15.3	27	53	2.6
MCW	UDDR	TEAT	CW	FAT	REA	MARB	BMIS	BIIS	CHBS
100	1.20	1.20	67	0.009	0.57	-0.05	334	391	107

- Another TBone sired heifer calf that comes to the top of her contemporaries. Lots of “presence” and quality about her and sure to grab your attention. Long spined, wide built, good structured and backed by generations of productivity. Make sure and look this one up.



Lot 32A — LCC 1363 Pretty Lady 951



LBB CFF 38Y TILLY 04D ET

43710786 — Calved: 1/2/16 — Tattoo: LE 04D

CE	BW	WW	YW	DMI	SC	SCF	MM	M&G	MCE
-1.6	4.5	52	90	0.0	0.5	13.2	20	46	1.1
MCW	UDDR	TEAT	CW	FAT	REA	MARB	BMIS	BIIS	CHBS
106	1.30	1.30	67	-0.021	0.50	0.05	312	373	115

- This is a gorgeous uddered young ET female sired by the past high selling bull at CMR's dispersal and out of Lamb Bros. donor 38Y. She's the kind you can build on and be a cornerstone. Nursing a high-end heifer baby that adds value to her productivity. Buy young females like this one's kind and reap the benefits for years to come!
- Believed safe AI to JTH SC Playmaker 22C ET on May 16, 2019, then pasture exposed to JTH SC Playmaker 22C ET from May 21, 2019 to Aug. 1, 2019.



Lot 33 — LBB CFF 38Y Tilly 04D ET



LCC 624 MISS TILLY 984

P44031919 — Calved: 3/21/19 — Tattoo: LE 984

CE	BW	WW	YW	DMI	SC	SCF	MM	M&G	MCE
-1.0	4.1	59	96	0.5	0.4	13.9	20	50	0.1
MCW	UDDR	TEAT	CW	FAT	REA	MARB	BMIS	BIIS	CHBS
119	1.30	1.30	79	0.009	0.57	0.14	328	402	115

- Here is a female sired by Advance 624 who is a full brother to the popular 628 bull. This young lady is loaded with quality and has one fancy momma backing her. The future is awfully bright for a heifer of this caliber. Bred and built to enhance the next generation.



Lot 33A — LCC 624 Miss Tilly 984

Cow Calf Pairs



Lot 34 — CAL LCC 2296 Victra 989



MF 308N Addy 1302 ET — Donor Dam of Lot 35



Lot 35A — RJL TJ LCC Addy 955



EXR VICTRA 5202 ET

P43623131 — Calved: 9/9/15 — Tattoo: BE 5202

CE	BW	WW	YW	DMI	SC	SCF	MM	M&G	MCE
-3.1	2.6	50	78	0.2	1.1	24.3	26	51	-3.5
MCW	UDDR	TEAT	CW	FAT	REA	MARB	BMI\$	BIIS	CHBS
96	1.30	1.30	61	-0.001	0.46	-0.01	454	517	93

- Here's a Legend x 719T female that is ultra attractive, smooth and feminine featured, neat uddered, long spined and productive.
- Believed safe A. to JTH SC Playmaker 22C ET on May 16, 2019, then pasture exposed to JTH SC Playmaker 22C ET from May 21, 2019 to Aug. 21, 2019.



CAL LCC 2296 VICTRA 989

44035245 — Calved: 3/18/19 — Tattoo: LE 989

CE	BW	WW	YW	DMI	SC	SCF	MM	M&G	MCE
0.8	2.2	55	84	0.2	1.0	19.4	27	55	1.0
MCW	UDDR	TEAT	CW	FAT	REA	MARB	BMI\$	BIIS	CHBS
92	1.20	1.30	68	0.019	0.59	0.05	396	464	103

CE	BW	WW	YW	DMI	SC	SCF	MM	M&G	MCE
3.4	2.2	52	86	-0.1	0.8	16.8	19	45	2.7
MCW	UDDR	TEAT	CW	FAT	REA	MARB	BMI\$	BIIS	CHBS
106	1.20	1.30	66	-0.021	0.43	0.00	362	423	115

- This is a sweetheart heifer baby sired by the breed leading 2296. She's so good at the ground, with added rib shape, width, and quality from end to end. One that will be competitive and involve into the front pasture kind.



RJL TJ LCC 4134 MISS ADDY 629

P43701851 — Calved: 2/6/16 — Tattoo: LE 629

CE	BW	WW	YW	DMI	SC	SCF	MM	M&G	MCE
3.4	2.2	52	86	-0.1	0.8	16.8	19	45	2.7
MCW	UDDR	TEAT	CW	FAT	REA	MARB	BMI\$	BIIS	CHBS
106	1.20	1.30	66	-0.021	0.43	0.00	362	423	115

- You buy them for what they will produce and here's a prime example. A nickel green, but check out her baby! 629 is near perfect uddered and extra heavy milking and hard working. She's out of the notable 1302 donor which makes her a maternal sister to several high sellers including the multiple national division winner for the Moore family from Illinois.
- Bred AI on April 25, 2019 to NJW 76S 27A Long Range 203D ET, then pasture exposed to JTH SC Playmaker 22C ET from May 10, 2019 to Aug. 1, 2019.



RJL TJ LCC ADDY 955

P44031867 — Calved: 3/1/19 — Tattoo: LE 955

CE	BW	WW	YW	DMI	SC	SCF	MM	M&G	MCE
2.5	2.8	53	87	0.1	1.0	14.6	24	50	0.9
MCW	UDDR	TEAT	CW	FAT	REA	MARB	BMI\$	BIIS	CHBS
108	1.20	1.20	69	-0.001	0.45	0.06	330	395	111

- Here is another Doc Holiday that has the goods to compete and will make an exceptional replacement. Moderate, square, bold ribbed, sound footed, and high quality.



CAL LCC MISS LANORE 613

P43701881 — Calved: 1/26/16 — Tattoo: LE 613

CE	BW	WW	YW	DMI	SC	SCF	MM	M&G	MCE
1.2	3.7	51	81	0.3	1.0	12.2	20	45	2.0
MCW	UDDR	TEAT	CW	FAT	REA	MARB	BMIS	BIIS	CHBS
87	1.10	1.10	68	0.039	0.47	0.16	287	355	99

- Here is an extremely hard working 3-year-old that stems from a super productive cow family. She's extra heavy milking and is raising a superb heifer baby. Lots of future in this young lady!
- 100+ days sale to JTH SC Playmaker 22C ET



Lot 36 — CAL LCC Miss Lanore 613



CAL LCC QUEEN LANORE 948

P44031847 — Calved: 2/19/19 — Tattoo: LE 948

CF CLEAN SLATE 0004 (DLF,HYF,IEF) P43811224	ECR RO CHOSEN ONE 424 ET (DLF,HYF,IEF) LCC CAL LET FREEDOM RING 230	UPS SENSATION 2296 ET (DLF,HYF,IEF,MSUDF) JRR MISS TOBEY 711T (DLF,HYF,IEF) LCC BACK N TIME ET (DLF,HYF,IEF) LAKE B/G FREEDOM BELLE 402U
CAL LCC MISS LANORE 613 P43701881	RS 45P MAGNUM 91Y (DLF,HYF,IEF) MSU LANORE 10Y	NJW FHF 9710 TANK 45P (SOD)(DLF,HYF,IEF) DS GPR LULU 133U (DLF,HYF,IEF) THR THOR 4029 (SOD)(CHB)(DLF,HYF,IEF,MSUDF) MSU LANORE 11R

CE	BW	WW	YW	DMI	SC	SCF	MM	M&G	MCE
0.2	4.2	52	82	0.4	1.2	11.8	25	51	2.7
MCW	UDDR	TEAT	CW	FAT	REA	MARB	BMIS	BIIS	CHBS
89	1.20	1.20	69	0.019	0.47	0.03	275	335	99

- Another high-quality Clean Slate calf that checks all the boxes. Backed by a notable cow family for added productivity and is built awfully well in terms of structure, body and eye appeal.



Lot 36A — CAL LCC Queen Lanore 948



AF 415W L61 TIMER 2041 ET (DLF,HYF,IEF)

43282193 — Calved: 2/16/12 — Tattoo: LE 2041

CE	BW	WW	YW	DMI	SC	SCF	MM	M&G	MCE
-2.4	4.5	46	83	0.1	0.6	16.7	19	43	-0.1
MCW	UDDR	TEAT	CW	FAT	REA	MARB	BMIS	BIIS	CHBS
104	1.20	1.20	59	0.009	0.40	-0.07	340	391	96

- Here is an outstanding producer that will bring in one of the biggest calves year after year. Tracing back to the notable MSU Markette family. She transmits tremendous quality and has an extra shot of power to raise the good ones!
- Pasture exposed to JTH SC Playmaker 22C ET from April 1, 2019 to Aug. 1, 2019.



Lot 37 — AF 415W L61 Timer 2041 ET



LCC 1363 SWEET PIE 913

P44031614 — Calved: 1/14/19 — Tattoo: LE 913

MSU 122L T-BONE 1363 ET (DLF,HYF,IEF) 43224742	HARVIE DAN T-BONE 196T MH GOLD MISS ONLINE 5324 ET (DLG,HYF,IEF,MSUDF)	KAIRURU ABERDEEN 03 0047 HARVIE MS FIREFLY 65P REMITALL ONLINE 122L (SOD)(CHB)(DLF,HYF,IEF) RR MH GOLDEN LADY 9540 (DLG,HYF,IEF)
AF 415W L61 TIMER 2041 ET (DLF,HYF,IEF) 43282193	TH 805H 743 ABOUT TIME 415W ET (DLF,HYF,IEF) MSU BR MARKETTE L61	CRR ABOUT TIME 743 (SOD)(DLF,HYF,IEF) YY 707B PRIMROSE 805H KFF TOTAL BR MARKETTE 2009 (DOD)

CE	BW	WW	YW	DMI	SC	SCF	MM	M&G	MCE
0.7	3.5	44	81	0.0	0.7	12.9	21	43	3.3
MCW	UDDR	TEAT	CW	FAT	REA	MARB	BMIS	BIIS	CHBS
108	1.20	1.20	62	0.009	0.45	-0.02	294	344	104

- One of the top end natural calves that's AI sired by the T-Bone bull who stamps them with extra power, rib and dimension with added quality. This is one that's a sure-fire contender with maternal built in to make a high-end replacement.



Lot 37A — LCC 1363 Sweet Pie 913

Cow Calf Pairs



Lot 38 — MF 1306 Charelize GC 511C



Lot 38A — CAL LCC Confirmed 911



Lot 39A — LCC 5804 Miss Diva 968

38
COW

MF 1306 CHARLIZE GC 511C

P43675696 — Calved: 8/10/15 — Tattoo: BE 511C

CE	BW	WW	YW	DMI	SC	SCF	MM	M&G	MCE
0.4	4.4	60	100	0.1	1.0	14.6	27	57	3.7
MCW	UDDR	TEAT	CW	FAT	REA	MARB	BMI\$	BIIS	CHBS
133	1.30	1.30	78	-0.011	0.65	0.01	348	415	128

- A Game Changer daughter that will out produce herself time and time again. She is raising one powerhouse of a bull calf, she's gorgeous uddered, with added milk flow and puts it all into her baby. She inherits an extra punch going back to the notable Natalie female on the bottom side. A solid female that does a lot of good things!
- Pasture exposed to JTH SC Playmaker 22C ET from April 1, 2019 to Aug. 1, 2019.

38A
BULL

CAL LCC CONFIRMED 911

P44038650 — Calved: 1/4/19 — Tattoo: LE 911

ECR WHO MAKER 210 ET (DLF,HYF,IEF)	DKF RO CASH FLOW 0245 ET (SOD)(DLF,HYF,IEF)
KRUSTIC 711 ET (DLF,HYF,IEF,MSUDF)	RV GOLDEN LADY 5064 (DLF,HYF,IEF)
43848894 SULL TCC HARLEY 4069B ET (DLF,HYF,IEF,MSUDF)	C MILES MCKEE 2103 ET (CHB)(DLF,HYF,IEF,MSUDF)
	LCC TWO TIMIN 438 ET (DLF,HYF,IEF)
H BK CCC SR GAME CHANGER ET (CHB)(DLF,HYF,IEF,MSUDF)	KJ HVH 33N REDEEM 485T ET (SOD)(DLF,HYF,IEF)
MF 1306 CHARLIZE GC 511C	NJW 78P 63N LADYSPORT 51W ET (DLF,HYF,IEF)
P43675696 MF 308N ANNETTE 1306 ET	NJW 73S M326 TRUST 100W ET (SOD)(CHB)(DLF,HYF,IEF,MSUDF)
	MF 62J NATALIE 122L 308N (DLF,HYF,IEF)

CE	BW	WW	YW	DMI	SC	SCF	MM	M&G	MCE
-1.1	4.3	57	97	0.0	1.0	14.2	30	59	1.3
MCW	UDDR	TEAT	CW	FAT	REA	MARB	BMI\$	BIIS	CHBS
124	1.20	1.20	83	-0.021	0.75	0.02	351	415	137

- A herd sire prospect that should prove to generate power and quality without sacrificing maternal qualities. A standout momma behind him and sired by past Fort Worth Stock Show Reserve Champion and NWSS Yearling Champion Bull, K Rustic. Act. BW 78 lb.

39
COW

CRANE DIVA 1475

P43564837 — Calved: 7/3/14 — Tattoo: BE 1475

CE	BW	WW	YW	DMI	SC	SCF	MM	M&G	MCE
-3.7	4.5	58	96	0.3	0.8	19.0	23	52	0.2
MCW	UDDR	TEAT	CW	FAT	REA	MARB	BMI\$	BIIS	CHBS
101	1.20	1.20	70	0.019	0.58	0.04	390	462	106

- Another extra hard-working Revolution 4R mother who puts it all into her baby. Good uddered with tremendous milk flow and offers added quality and productivity. Make sure and check out her heifer calf.
- Believed safe AI to NJW 76S 27A Long Range 203D ET on April 21, 2019, then pasture exposed to JTH SC Playmaker 22C ET from May 1, 2019 to Aug. 1, 2019.

39A
COW

LCC 5804 MISS DIVA 968

P44031881 — Calved: 3/8/19 — Tattoo: LE 968

H2 10Y 7183 DOC HOLLIDAY 5804 (DLF,HYF,IEF,MSUDF)	NJW 73S W18 HOMETOWN 10Y ET (SOD)(CHB)(DLF,HYF,IEF,MSUDF)	SHF WONDER M326 W18 ET (CHB)(DLF,HYF,IEF)
43687631 RW BF AMANDA 98170 7183 ET (DLF,HYF,IEF)		NJW P606 72N DAYDREAM 73S (DLF,HYF,IEF,MSUDF)
		C-S PURE GOLD 98170 (SOD)(CHB)(DLF,HYF,IEF)
		RW SNICKERS 8007 1080
MSU TCF REVOLUTION 4R (SOD)(CHB)(DLF,HYF,IEF)		FELTONS LEGEND 242 (SOD)(HYF)
CRANE DIVA 1475		MSU TCF RACHAEL ET 54N (DLF,HYF,IEF)
P43564837 CRANE CHATTIN LADY 254		JWRLPH WORTH CHATIN ABOUT 104U (DLF,HYF,IEF)
		CH 23C LADY DIVA 417 1ET

CE	BW	WW	YW	DMI	SC	SCF	MM	M&G	MCE
-1.2	3.9	56	91	0.3	1.0	15.6	26	54	-0.4
MCW	UDDR	TEAT	CW	FAT	REA	MARB	BMI\$	BIIS	CHBS
105	1.20	1.20	70	0.019	0.53	0.08	344	413	107

- We can't say enough good things about these Doc Holiday calves, and this one sure makes the top cut. Good at any angle, big and bold ribbed, wide made, square hipped, and good looking.



C SARAH GOLD JS 609

P43733098 — Calved: 6/28/16 — Tattoo: RE 609

CE	BW	WW	YW	DMI	SC	SCF	MM	M&G	MCE
-0.1	3.9	42	68	-0.4	0.5	7.8	16	37	1.8
MCW	UDDR	TEAT	CW	FAT	REA	MARB	BMI\$	BIIS	CHBS
81	0.90	0.90	54	-0.021	0.30	-0.03	213	256	98

- Another exceptionally hard-working female that gains value when you lay eyes on her heifer calf. This momma is super long made, angular and feminine in her design, true and good at the ground and will out produce herself time and time again.
- 120 days safe to JTH SC Playmaker 22C ET.



Lot 40 — C Sarah Gold JS 609



LCC MISS FRESH START 909

P44031684 — Calved: 1/12/19 — Tattoo: LE 909

ECR RO CHOSEN ONE 424 ET (DLF,HYF,IEF)
CF CLEAN SLATE 0004 (DLF,HYF,IEF)
P43811224 LCC CAL LET FREEDOM RING 230

UPS SENSATION 2296 ET (DLF,HYF,IEF,MSUDF)
JRR MISS TOBEY 711T (DLF,HYF,IEF)
LCC BACK N TIME ET (DLF,HYF,IEF)
LAKE BJG FREEDOM BELLE 402U

DLL JEB STEWART (DLF,HYF,IEF,MSUDF)
C SARAH GOLD JS 609
P43733098 C SARAH GOLD 410

BF 7055 STONEWALL 902 ET
DKM MISS CHARMER 29F 660
C-S PURE GOLD 98170 (SOD)(CHB)(DLF,HYF,IEF)
C SARAH 816 001

CE	BW	WW	YW	DMI	SC	SCF	MM	M&G	MCE
0.4	3.9	47	74	0.0	1.0	9.6	23	46	3.0
MCW	UDDR	TEAT	CW	FAT	REA	MARB	BMI\$	BIIS	CHBS
86	1.10	1.00	62	-0.011	0.38	-0.05	238	286	98

- These Clean Slates are extremely impressive. This one is nearly ideal in her angles and structure, deep sided, long and level hipped and has the "presence" about her.



Lot 40A — LCC Miss Fresh Start 909



C VICTORIA JS 610

P43733100 — Calved: 6/30/16 — Tattoo: RE 610

CE	BW	WW	YW	DMI	SC	SCF	MM	M&G	MCE
-0.7	4.1	40	67	-0.4	0.3	6.9	13	33	0.3
MCW	UDDR	TEAT	CW	FAT	REA	MARB	BMI\$	BIIS	CHBS
78	1.00	0.90	50	-0.011	0.15	0.03	196	242	94

- An extremely hard-working momma that puts it all into her baby. Study the coupon at side and you will realize the value this one has from a productivity and function standpoint. The kind that keeps you rolling. Extra-long and angular, heavy milking, and good footed.
- 100 days safe to JTH SC Playmaker 22C ET.



Lot 41 — C Victoria JS 610



LCC 118E SPARKLES 973

P44031889 — Calved: 3/11/19 — Tattoo: LE 973

ECR RO CHOSEN ONE 424 ET (DLF,HYF,IEF)
CF CLEAN SLATE 0004 (DLF,HYF,IEF)
P43811224 LCC CAL LET FREEDOM RING 230

UPS SENSATION 2296 ET (DLF,HYF,IEF,MSUDF)
JRR MISS TOBEY 711T (DLF,HYF,IEF)
LCC BACK N TIME ET (DLF,HYF,IEF)
LAKE BJG FREEDOM BELLE 402U

DLL JEB STEWART (DLF,HYF,IEF,MSUDF)
C VICTORIA JS 610
P43733100 C VICTORIA 513 202

BF 7055 STONEWALL 902 ET
DKM MISS CHARMER 29F 660
C KYSER N302 513
C VICTORIA 832W 113

CE	BW	WW	YW	DMI	SC	SCF	MM	M&G	MCE
-2.6	5.1	49	79	0.0	0.9	9.1	21	46	1.0
MCW	UDDR	TEAT	CW	FAT	REA	MARB	BMI\$	BIIS	CHBS
84	1.10	1.10	60	-0.011	0.31	-0.05	229	279	97

- This is a performance driven female that has tons of quality about her. Her momma has done a fantastic job raising this one, and the future is awfully bright. Huge bodied, extra soft and athletic at the ground, long bodied and good looking.



Lot 41A — LCC 118E Sparkles 973

Cow Calf Pairs



Lot 42 — HAPP 1307 Evelyn 3E ET

HAPP 1307 EVELYN 3E ET

43961096 — Calved: 1/17/17 — Tattoo: LE 3E



GOLDEN OAK OUTCROSS 18U (SOD)(CHB)(DLF,HYF,IEF,MSUDF) GOLDEN-OAK FUSION 3S (DLF,HYF,IEF,MSUDC)
 CHEZ AA NEXT LEVEL ET (DLF,HYF,IEF,MSUDF) GOLDEN-OAK 60D MALLORY 15M
 P43527067 R SWEET RED WINE 039 (DLF,HYF,IEF) MSU TCF REVOLUTION 4R (SOD)(CHB)(DLF,HYF,IEF)
 R MISS WRANGLER 207 (DLF,HYF,IEF)

DELHAWK KAHUNA 1009 ET (DLF,HYF,IEF) CH ENUFF PROPHET 2913 (DLF,HYF,IEF)
 HAPP CELESTE 1307 (DLF,HYF,IEF) MCR PFF MISS GOLD DOM 206 ET (DLF,HYF,IEF)
 43382414 HH MISS ADVANCE 9086W (DLF,HYF,IEF) CL 1 DOMINO 750T 1ET (DLF,HYF,IEF)
 HH MISS ADVANCE 6097S (DLF,IEF)

CE	BW	WW	YW	DMI	SC	SCF	MM	M&G	MCE
-0.3	4.3	59	97	0.6	1.3	13.7	27	56	3.9
MCW	UDDR	TEAT	CW	FAT	REA	MARB	BMS	BIIS	CHBS
101	1.10	1.10	73	0.029	0.54	0.05	306	376	101

- A daughter of CHEZ AA NEXT LEVEL ET and out of one of Happ's Premier Donors, Celeste 1307. Pasture Exposed to LCC 44573 Leonard Wood 48F ET, a son of /S TRM Fort Payne 44573 ET and the popular, many time champion female and a lead donor for Deanajak, LCC SHF MISS Lemon Lime 502 ET from May 10, 2019 to July 25, 2019, then pasture exposed from July 26, 2019 to Sept. 1, 2019 to LCC BCC Lumberjack 3F ET, a maternal brother to the breed giant 2296 and sired by CRR 5280 that was the high selling bull in the 2018 ITC sale purchased by the Dunn Family.
- Lot 42A: Bull calf born April 25, 2019, sired by CRR 322 Bell 617.



Lot 44 — CHEZ Cally 542C

CHEZ CALLY 542C

43628312 — Calved: 5/7/15 — Tattoo: LE 542C



UPS DOMINO 3027 (SOD)(DLF,HYF,IEF,MSUDF) CL 1 DOMINO 9126J 1ET (SOD)(DLF,IEF)
 CHURCHILL SENSATION 028X (SOD)(DLF,HYF,IEF) UPS MISS DIAMOND 1353 (DLF,HYF,IEF,MSUDF)
 43092364 CHURCHILL LADY 7202T ET (DLF,HYF,IEF) GH RAMBO 279R (SOD)(CHB)(DLF,HYF,IEF)
 CL 1 DOMINETTE 301N (DLF,HYF,IEF)

GOLDEN OAK OUTCROSS 18U (SOD)(CHB)(DLF,HYF,IEF,MSUDF) GOLDEN-OAK FUSION 3S (DLF,HYF,IEF,MSUDC)
 CHEZ TR CHERRY BERRY 304A ET (DLF,HYF,IEF) GOLDEN-OAK 60D MALLORY 15M
 P43428580 R SWEET RED WINE 039 (DLF,HYF,IEF) MSU TCF REVOLUTION 4R (SOD)(CHB)(DLF,HYF,IEF)
 R MISS WRANGLER 207 (DLF,HYF,IEF)

CE	BW	WW	YW	DMI	SC	SCF	MM	M&G	MCE
5.6	1.2	59	87	0.5	1.5	21.5	41	71	4.8
MCW	UDDR	TEAT	CW	FAT	REA	MARB	BMS	BIIS	CHBS
58	1.30	1.50	69	0.049	0.54	0.14	421	502	94

- A daughter of Happ's premier donors, Celeste 1307, PE to LCC 44573 Leonard Wood 48F ET, a son of /S TRM Fort Payne 44573 ET and the national champion female and lead donor for Deanajak, LCC SHF MISS Lemon Lime 502 ET from May 10, 2019 to July 25, 2019, then PE to LCC BCC Lumberjack 3F ET, a maternal brother to the breed giant 2296 and sired by CRR 5280 the high seller in 2018 ITC purchased by the Dunn Family.
- Lot 44A: Heifer calf born May 11, 2019, sired by Catapult 42E, a son of CRR 719 Catapult 109 and the powerful Sullivan donor cow, SULL Candy's Time 4265.



Lot 43 — RTK RRR Annies Diamond 14E

RTK RRR ANNIES DIAMOND 14E

P43782845 — Calved: 1/22/17 — Tattoo: LE RTK 14E



NJW 1Y WRANGLER 19D (SOD)(DLF,HYF,IEF) CIRCLE-D WRANGLER 832W (SOD)(CHB)(HYF)
 AH JDH CRACKER JACK 26U ET (SOD)(DLF,HYF,IEF) NJW FROSTY 1Y
 P42924297 CRR D03 VIOLET 349 (DLF,HYF,IEF) SHF INTERSTATE 20X D03 (SOD)(DLF,HYF,IEF)
 KJ 2410 VIOLET 392F

C STOCKMAN 2059 ET (CHB)(DLF,HYF,IEF) NJW 98S R117 RIBEYE 88X ET (SOD)(DLF,HYF,IEF,MSUDF)
 RJ ANNIE 5021 ET C NOTICE ME ET (DLF,HYF,IEF)
 P43563643 RVP STAR 122L WAVELENTH ET 44W (DLF,HYF,IEF) REMITALL ONLINE 122L (SOD)(CHB)(DLF,HYF,IEF)
 STAR BETHANY 52M (DLF,HYF,IEF)

CE	BW	WW	YW	DMI	SC	SCF	MM	M&G	MCE
1.1	4.5	50	83	0.0	0.6	14.3	22	47	-0.7
MCW	UDDR	TEAT	CW	FAT	REA	MARB	BMS	BIIS	CHBS
82	1.30	1.30	65	0.029	0.42	0.18	325	394	106

- A powerful, stout and striking Cracker Jack Daughter that is goggle-eyed, red necked and almost red to the ground. As a calf she was a popular two-time heifer calf champion at the 2017 Nebraska Hereford Field Day.
- Pasture exposed to LCC 44573 Leonard Wood 48F ET, a son of /S TRM Fort Payne 44573 ET and the popular, many time champion female and a lead donor for Deanajak, LCC SHF MISS Lemon Lime 502 ET from May 10, 2019 to July 25, 2019, then pasture exposed from July 26, 2019 to Sept. 1, 2019 to JTH SC PLAYMAKER 22C ET.
- Lot 43A: Bull calf born on April 19, 2019, sired by Catapult 42E, a son of CRR 719 Catapult 109 and the Powerful Sullivan Donor Cow -SULL Candy's Time 4265



Lot 45 — RJ Holly 5014 ET

RJ HOLLY 5014 ET

43560242 — Calved: 2/1/15 — Tattoo: LE 5014



SHF RIB EYE M326 R117 (SOD)(DLF,HYF,IEF) KCF BENNETT 3008 M326 (SOD)(DLF,HYF,IEF)
 NJW 98S R117 RIBEYE 88X ET (SOD)(DLF,HYF,IEF,MSUDF) HVH MISS HUDSON 83K 8M
 43094146 NJW 9126J DEW DOMINO 98S (SOD)(DLF,HYF,IEF) CL 1 DOMINO 9126J 1ET (SOD)(DLF,IEF)
 NJW 57G 74G DEW 5M (DLF,HYF,IEF)

REMITALL ONLINE 122L (SOD)(CHB)(DLF,HYF,IEF) REMITALL EMBRACER 8E (SOD)(HYF)
 STAR TCF ADV ORALEE 173P ET (DLF,HYF,IEF) REMITALL CATALINA 24H
 P42485019 HH MISS ADV 786G 1ET CL 1 DOMINO 500E (SOD)(DLF,IEF)
 HH MISS ADVANCE 251B

CE	BW	WW	YW	DMI	SC	SCF	MM	M&G	MCE
3.2	2.6	54	83	0.1	1.0	17.2	29	56	3.3
MCW	UDDR	TEAT	CW	FAT	REA	MARB	BMS	BIIS	CHBS
64	1.30	1.40	67	-0.001	0.45	0.24	373	452	108

- This powerful female was a member of the 2016 NWSS Champion Pen of Three Hereford heifers.
- Pasture Exposed to LCC 44573 Leonard Wood 48F ET, a son of /S TRM Fort Payne 44573 ET and the popular, many time champion female and a lead donor for Deanajak, LCC SHF MISS Lemon Lime 502 ET from May 10, 2019 to July 25, 2019, then pasture exposed from July 26, 2019 to Sept. 1, 2019 to JTH SC PLAYMAKER 22C ET.
- Lot 45A: Bull calf born May 19, 2019, sired by Catapult 42E, a son of CRR 719 Catapult 109 and the Powerful Sullivan Donor Cow -SULL Candy's Time 4265



MCF 311A DIXIELAND 1742 ET

P43984776 — Calved: 4/3/17 — Tattoo: RE 1742

CRR ABOUT TIME 743 (SOD)(DLF,HYF,IEF)
 RRR TIME IS MONEY 311A ET (DLF,HYF,IEF)
 43414858 RRR L18 PENELOPE 0509 ET (DLF,HYF,IEF)

THM DURANGO 4037 (SOD)(DLF,HYF,IEF)
 CRR D03 CASSIE 206 (DLF,HYF,IEF)
 GO EXCEL L18 (SOD)(CHB)(DLF,HYF,IEF)
 DJR MOLLY 102 (DLF,HYF,IEF)

SBR RATCHETT 110E
 MCF 110E MISS DIXIE 36N (DLF,HYF,IEF,MSUDF)
 P42449426 WIB 512 CLEMENTINE

REMITALL BOOMER 46B (SOD)(CHB)(DLF,HYF,IEF)
 SBR LORNA KAY 233X
 MM RSM STOCKMASTER 512 (SOD)(DLF,HYF,IEF)
 SBR GYPSY DUTCHESS 77B

CE	BW	WW	YW	DMI	SC	SCF	MM	M&G	MCE
-4.6	4.7	50	77	0.0	0.7	17.4	20	45	-3.8
MCW	UDDR	TEAT	CW	FAT	REA	MARB	BMIS	BIIS	CHBS
118	1.10	1.10	63	-0.041	0.45	-0.08	360	413	102

- Pasture Exposed to LCC 44573 Leonard Wood 48F ET, a son of /S TRM Fort Payne 44573 ET and the popular, many time champion female and a lead donor for Deanajak, LCC SHF MISS Lemon Lime 502 ET from May 10, 2019 to July 25, 2019, then pasture exposed from July 26, 2019 to Sept. 1, 2019 to JTH SC PLAYMAKER 22C ET.
- Lot 46A: Heifer calf, born April, sired by 028X



MCF 743 TRINITY 1765 ET

P43871421 — Calved: 3/12/17 — Tattoo: RE 1765

THM DURANGO 4037 (SOD)(DLF,HYF,IEF)
 CRR ABOUT TIME 743 (SOD)(DLF,HYF,IEF)
 P42797564 CRR D03 CASSIE 206 (DLF,HYF,IEF)

CS BOOMER 29F (SOD)(DLF,HYF,IEF)
 THM 7085 VICTRA 9036 (DLF,HYF,IEF)
 SHF INTERSTATE 20X D03 (SOD)(DLF,HYF,IEF)
 CRR 475E CASSIE 838

JTH 815 PACEMAKER 2N (DLF,IEF)
 MCF 2N MIRAGE 12U (DLF,HYF,IEF,MSUDF)
 P42942751 MCF 11K MISS TABBY 9R

MM RSM PACEMAKER 815
 JTH LADY 103T APACHE 17K
 VCF 1G ICON 11K
 VCF G727 ABBEY 04M (DOD)

CE	BW	WW	YW	DMI	SC	SCF	MM	M&G	MCE
-2.3	3.7	49	77	0.1	0.7	17.0	21	45	-5.3
MCW	UDDR	TEAT	CW	FAT	REA	MARB	BMIS	BIIS	CHBS
96	1.20	1.20	64	-0.021	0.45	-0.13	345	395	99

- Pasture Exposed to LCC 44573 Leonard Wood 48F ET, a son of /S TRM Fort Payne 44573 ET and the popular, many time champion female and a lead donor for Deanajak, LCC SHF MISS Lemon Lime 502 ET from May 10, 2019 to July 25, 2019, then pasture exposed from July 26, 2019 to Sept. 1, 2019 to JTH SC PLAYMAKER 22C ET.
- Lot 48A: Bull calf, born March, sired by 028X.



RJ W SUZETTE 6032 ET

43730686 — Calved: 2/16/16 — Tattoo: BE 6032

CE	BW	WW	YW	DMI	SC	SCF	MM	M&G	MCE
4.6	2.4	54	89	0.2	1	15.1	23	50	2.1
MCW	UDDR	TEAT	CW	FAT	REA	MARB	BMIS	BIIS	CHBS
95	1.40	1.40	69	-0.022	0.37	0.15	337	408	110

- Here is a super attractive young female that is built and bred with loads of quality. Check out her heifer baby and you'll see she can flat raise one. She's beautiful in her design, sound footed, hard-working and will add value to the next generation.
- Pasture exposed to JTH SC Playmaker 22C ET from when to when May 1, 2019 to Sept. 1, 2019.



LCC SUZY Q 914

44031685 — Calved: 1/19/19 — Tattoo: BE 914

ECR RO CHOSEN ONE 424 ET (DLF,HYF,IEF)
 CF CLEAN SLATE 0004 (DLF,HYF,IEF)
 P43811224 LCC CAL LET FREEDOM RING 230

UPS SENSATION 2296 ET (DLF,HYF,IEF,MSUDF)
 JRR MISS TOBEY 711T (DLF,HYF,IEF)
 LCC BACK N TIME ET (DLF,HYF,IEF)
 LAKE B/JG FREEDOM BELLE 402U

HAROLDSONS WLC RHINO 48Y ET
 RJ W SUZETTE 6032 ET
 P43730686 STAR SUZETTE 418S ET (DLF,HYF,IEF)

SHF TAHOE R117 T100 (MSUDF)
 HAROLDSON'S 37H MIRA ET 62K
 DM BR SOONER (CHB)(DLF,HYF,IEF)
 RB L1 DOMINETTE 8063 (DLF,HYF,IEF)

CE	BW	WW	YW	DMI	SC	SCF	MM	M&G	MCE
0.8	3.9	54	87	0.3	1.2	13.2	26	53	2.2
MCW	UDDR	TEAT	CW	FAT	REA	MARB	BMIS	BIIS	CHBS
92	1.30	1.30	69	-0.012	0.41	0.03	299	362	104

- Another exceptional Clean Slate heifer calf that is backed by a powerful mother. She has all the right parts and pieces to be very competitive and mature into a top notch replacement.



MCF 1541 NAOMI 1752

P43871410 — Calved: 5/5/17 — Tattoo: RE 1752

PHH PCC 812 TRUE GRIT 002 (DLF,HYF,IEF)
 MCF 002 TRUE GRIT 1541 (DLF,HYF,IEF,MSUDF)
 P43628095 H GH ELEGANCE 0111 ET (DLF,HYF,IEF)

CRR ABOUT TIME 743 (SOD)(DLF,HYF,IEF)
 PHH 646 HEIDE 812 (DLF,HYF,IEF)
 GO EXCEL L18 (SOD)(CHB)(DLF,HYF,IEF)
 H PAULA 625 ET (DLF,HYF,IEF)

H/TSR/CHEZ/FULL THROTTLE ET (DLF,HYF,IEF)
 MCF BH PATIENCE 1540 ET
 P43620808 MSU D03 PANDORA 12P (DOD)(DLF,HYF,IEF)

H WCC/WB 668 WYARNO 9500 ET (DLF,HYF,IEF)
 R SWEET RED WINE 039 (DLF,HYF,IEF)
 SHF INTERSTATE 20X D03 (SOD)(DLF,HYF,IEF)
 MSU MISS WRANGLER 48J

CE	BW	WW	YW	DMI	SC	SCF	MM	M&G	MCE
-6.6	5.6	61	95	0.3	0.5	15.7	26	56	-2.5
MCW	UDDR	TEAT	CW	FAT	REA	MARB	BMIS	BIIS	CHBS
101	1.10	1.10	75	-0.031	0.57	-0.09	343	405	114

- Pasture Exposed to LCC 44573 Leonard Wood 48F ET, a son of /S TRM Fort Payne 44573 ET and the popular, many time champion female and a lead donor for Deanajak, LCC SHF MISS Lemon Lime 502 ET from May 10, 2019 to July 25, 2019, then pasture exposed from July 26, 2019 to Sept. 1, 2019 to JTH SC PLAYMAKER 22C ET.
- Lot 47A: Bull calf, born March, sired by 028X



Lot 49 — RJ W Suzette 6032 ET



Lot 49A — LCC Suzy Q 914

From ITC Alliance Breeder Member — Benedict Herefords

Contacts: Noah 217-372-8009; Chad 217-246-5099; Larry 217-737-5686

www.benedictherefords.com • chad@benedictherefords.com



Lot 50 — BH 104K Gloriana 03A



BH 104K GLORIANA 03A

P43400474 — Calved: 3/1/13 — Tattoo: LE 03A

MSU BR HALLMARK 25H
BH VORTEX ET (DLF,HYF,IEF)
P43040228 ROF BH VIXEN 226S ET

REMITALL KEYNOTE 20X (SOD)(CHB)
BR L1 DOMINETTE 8077
GQ (SOD)
DJR NICKIE 302

REMITALL KEYNOTE 20X (SOD)(CHB)
MSU BR KEY MARKETTE 104K
P42145410 BR MARKETTE 2009 (DOD)

REMITALL TEAMSTER 9T
REMITALL PATRICIA 99P
SR 300C MARK 5432 (SOD)
BR FOX DOMETTE 4067

CE	BW	WW	YW	DMI	SC	SCF	MM	M&G	MCE
-4.7	4.9	51	84	0.1	0.9	10.0	18	43	-1.4
MCW	UDDR	TEAT	CW	FAT	REA	MARB	BMI\$	BIIS	CHBS
89	1.20	1.20	66	-0.031	0.52	-0.06	252	303	107

- “Glori” has proven to be as consistent as they come. Her structural integrity and amenability make her a good cow to be in any herd. Her calves are always marketable and her current one is no different. This pair presents a money-making opportunity.
- Pasture exposed to C 5280 Kat 7138 ET from July 31, 2019 to Sept. 1, 2019.
- Lot 50A: Heifer calf, born July 15, 2019, sired by C 5280 Kat 7138 ET.
- Owned with Edenburn Family Farm



Lot 51 — BH 17R Kit Kat 02D



BH 17R KIT KAT 02D

P4327059 — Calved: 1/15/16 — Tattoo: LE 02D

BH ENCHANTER 12W
BH KINGSIZE 20Y (DLF,HYF,IEF)
P43267081 VCF 503R REESE 11U

LF BH CP 7024 CHANNING 6121 ET
BH 100K FIREFLY 308 ET (DLF,HYF,IEF)
BBH KLB 310N ROSCO 503R
VCF 6727 CANDY 2J

GQ (SOD)
BH GQ'S LASSIE 17R ET (DLF,IEF)
P42639199 MSU BR KEY M ARKETTE 100K (DLF,HYF,IEF)

REMITALL LION KING 252L ET
BH Y131 MOON 05J
REMITALL KEYNOTE 20X (SOD)(CHB)
BR MARKETTE 2009 (DOD)

CE	BW	WW	YW	DMI	SC	SCF	MM	M&G	MCE
-5.0	5.3	52	90	0.2	1.1	10.2	17	43	-1.4
MCW	UDDR	TEAT	CW	FAT	REA	MARB	BMI\$	BIIS	CHBS
99	1.20	1.20	68	-0.021	0.48	-0.07	255	306	109

- Wow is all we can say about this female because she has such a wow factor. She is long-necked, big-legged, and does it all in such a smooth package. Combine these with her incredible udder and being safe in calf to 628, she provides a great opportunity to make money back really quick!
- Bred AI to H FHF Advance 628 ET on June 2, 2019.



Lot 52 — BH WH 21P Delilah 517C ET



BH WH 21P DELILAH 517C ET

P43673481 — Calved: 10/22/15 — Tattoo: BE 517C

THM DURANGO 4037 (SOD)(DLF,HYF,IEF)
CRR ABOUT TIME 743 (SOD)(DLF,HYF,IEF)
P42797564 CRR D03 CASSIE 206 (DLF,HYF,IEF)

CS BOOMER 29F (SOD)(DLF,HYF,IEF)
THM 7085 VICTRA 9036 (DLF,HYF,IEF)
SHF INTERSTATE 20X D03 (SOD)(DLF,HYF,IEF)
CRR 475E CASSIE 838

AA PRF WIDELoad (SOD)(CHB)(DLF,HYF,IEF)
LAGRAND DIXIE 21P (DLF,HYF,IEF)
P42514637 GERBER 512 DIXIE 36F

AA BOOMER 611 (SOD)
PRF MS SCARLETT 919
FELTONS 512
GERBER 135Y DIXIE 13C

CE	BW	WW	YW	DMI	SC	SCF	MM	M&G	MCE
-0.6	3.2	49	79	-0.1	0.8	21.0	22	47	-0.7
MCW	UDDR	TEAT	CW	FAT	REA	MARB	BMI\$	BIIS	CHBS
98	1.20	1.20	62	-0.011	0.38	-0.08	409	464	102

- This 4-year-old cow is a powerhouse About Time female that will benefit anybody's herd. Her About Time genetics are stout, big bodied, dark red phenotype combined with being safe in calf to 2296 makes her a unique, yet desirable breeding piece to anyone's herd.
- Bred AI to UPS Sensation 2296 on Feb. 6, 2020.
- Lot 52A: Heifer calf, born March 23, 2019, sired by WH BH Delight 906G.
- Owned with Winans Herefords

From ITC Guest Breeder — Prairie Rose Cattle Company

Fred and Elaine Nessler • 217-741-5500 • fwn@theprairiecross.com • ejn@theprairiecross.com

Elizabeth Nessler • 217-496-2442 • ehn@theprairiecross.com



BAR-S MS 5216 922

42976153 — Calved: 1/14/09 — Tattoo: BE 922

UPS DOMINO 3027 (SOD)(DLF,HYF,IEF,MSUDF)
 BAR-S MS 5216 (SOD)(DLF,IEF)
 42644307 UPS MISS MOM 2756 (DOD)

CL 1 DOMINO 9126J 1ET (SOD)(DLF,IEF)
 UPS MISS DIAMOND 1353 (DLF,HYF,IEF,MSUDF)
 /S MISTER MOM 7745 (SOD)(DLF,HYF,IEF,MSUDF)
 UPS MS ADVANCE 7573

DM BR L1 DOMINO 146 (SOD)(DLF,IEF)
 BAR-S MS 146 610
 42719121 BAR S MS 203 613 (DOD)

REMITALL KEYNOTE 20X (SOD)(CHB)
 DM L1 DOMINETTE 518
 F SPECTRE 203 1ET (SOD)
 BAR S MS 38S 0809 (DOD)

CE	BW	WW	YW	DMI	SC	SCF	MM	M&G	MCE
4.0	2.0	37	63	-0.2	0.9	16.7	23	41	4.4
MCW	UDDR	TEAT	CW	FAT	REA	MARB	BMIS	BIIS	CHBS
63	1.10	1.10	38	0.059	0.23	0.05	319	371	67

- We are offering this proven donor cow as a line one attraction. Huge bodied, big ribbed, and low birth weight. She is being offered to flush to the bull of your choice with full possession and no embryo reserves.
- Bred to C Spot On 6128 ET.



Lot 53 — Bar-S Ms 5216 922



PRCC 476 STEPPIN UP 846F

P43974564 — Calved: 4/9/18 — Tattoo: RE PRCC/ LE 846F

C CHANELS NITRO 1068 (DLF,HYF,IEF)
 PRCC JEFF DAVIS 41B ET (DLF,HYF,IEF)
 43476477 DELHAWK JTH ELLEN 1057

UPS TCC NITRO 1ET (SOD)(CHB)(DLF,HYF,IEF)
 C CHANEL ET (DLF,HYF,IEF,MSUDF)
 H SETH 6134 ET
 GO MS L18 EXCEL R94 (DLF,HYF,IEF)

NJW 98S R117 RIBEYE 88X ET (SOD)(DLF,HYF,IEF,MSUDF)
 LCC 88X TWO STEPPIN 476
 P43474414 LCC 533P TIME TO DANCE 14X ET (DLF,HYF,IEF)

SHF RIB EYE M326 R117 (SOD)(DLF,HYF,IEF)
 NJW 9126J DEW DOMINO 98S (DOD)(DLF,HYF,IEF)
 STAR BRIGHT FUTURE 533P ET (SOD)(DLF,HYF,IEF)
 LCC MERRY TIME 244 (DLF,HYF,IEF)

CE	BW	WW	YW	DMI	SC	SCF	MM	M&G	MCE
-1.9	4.7	57	88	0.2	0.8	13	25	54	0.2
MCW	UDDR	TEAT	CW	FAT	REA	MARB	BMIS	BIIS	CHBS
82	1.20	1.30	66	-0.032	0.44	0.05	299	365	104

- Nice balanced female that has show ring lines. She is as sound as they come.
- Bred to GKB PRCC 88X Belton 213 ET, an 88X son that is our calving ease sire, owned with GKB. He was a member of GKB's champion pen of bulls at the NWSS.



Lot 54 — PRCC 476 Steppin UP 846F



PRCC 922 KAYLA 834F

43974570 — Calved: 3/31/18 — Tattoo: RE PRCC LE 834F

C CHANELS NITRO 1068 (DLF,HYF,IEF)
 PRCC JEFF DAVIS 41B ET (DLF,HYF,IEF)
 43476477 DELHAWK JTH ELLEN 1057

UPS TCC NITRO 1ET (SOD)(CHB)(DLF,HYF,IEF)
 C CHANEL ET (DLF,HYF,IEF,MSUDF)
 H SETH 6134 ET
 GO MS L18 EXCEL R94 (DLF,HYF,IEF)

UPS DOMINO 5216 (SOD)(DLF,IEF)
 BAR-S MS 5216 922
 42976153 BAR-S MS 146 610

UPS DOMINO 3027 (SOD)(DLF,HYF,IEF,MSUDF)
 UPS MISS MOM 2756 (DOD)
 DM BR L1 DOMINO 146 (SOD)(DLF,IEF)
 BAR S MS 203 613 (DOD)

CE	BW	WW	YW	DMI	SC	SCF	MM	M&G	MCE
1.6	3.5	47	75	0.1	0.8	13.1	21	44	1.4
MCW	UDDR	TEAT	CW	FAT	REA	MARB	BMIS	BIIS	CHBS
83	1.20	1.20	54	0.009	0.36	-0.02	281	333	87

- Just like her dam, a very feminine refined female that is sound structured.
- Bred to GKB PRCC 88X Belton 213 ET, an 88X son that is our calving ease sire, owned with GKB. He was a member of GKB's champion pen of bulls at the NWSS.



PRCC 680D BREEZEWAY 826F

43974608 — Calved: 3/22/18 — Tattoo: LE 826F/RE PRCC

CHURCHILL SENSATION 028X (SOD)(DLF,HYF,IEF)
 CRR 028X ROLL TIDE 612 (CHB)(DLF,HYF,IEF,MSUDF)
 43693995 CRR 83Y AMBER 418 (DLF,HYF,IEF,MSUDF)

UPS DOMINO 3027 (SOD)(DLF,HYF,IEF,MSUDF)
 CHURCHILL LADY 7202T ET (DLF,HYF,IEF)
 NJW 98S 100W HANDSHAKE 83Y (CHB)(DLF,HYF,IEF)
 CRR 021 AMBER 2102

PURPLE SV KING JAMES 33Z ET (DLF,HYF,IEF)
 PRCC MISS BREEZEWAY 680D (DLF,HYF,IEF,MSUDF)
 43741763 PRCC MISS BREEZE 424B ET

PURPLE KINGSLEY 23X ET (DLF,HYF,IEF)
 PURPLE COTTON 40T ET (DLF,HYF,IEF)
 RST TIMES A WASTIN 0124 (SOD)(CHB)(DLF,HYF,IEF)
 GKB JKL 146 BREEZE B060 ET (DLF,HYF,IEF)

CE	BW	WW	YW	DMI	SC	SCF	MM	M&G	MCE
-2.4	4.0	65	106	0.6	1.5	16.5	30	62	0.6
MCW	UDDR	TEAT	CW	FAT	REA	MARB	BMIS	BIIS	CHBS
93	1.10	1.10	76	-0.021	0.58	0.08	358	436	112

- This Purple Reign bred female is a very feminine and well designed "King James" daughter. She sells bred to C Spot On 6128 ET.
- Lot 56A: Bull calf born April 4, 2019, sired by CRR 028X Roll Tide 612.

From ITC Guest Breeder — Prairie Rose Cattle Company

Fred and Elaine Nessler • 217-741-5500 • fwn@theprairiecross.com • ejn@theprairiecross.com

Elizabeth Nessler • 217-496-2442 • ehn@theprairiecross.com



Lot 57 — PRCC Miss Breezeway 680D



PRCC MISS BREEZEWAY 680D (DLF,HYF,IEF,MSUDF)

43741763 — Calved: 6/3/16 — Tattoo: RE PRCC LE 680D

PURPLE SV KING JAMES 33Z ET (DLF,HYF,IEF)
43318427 PURPLE KINGSLEY 23X ET (DLF,HYF,IEF)
PURPLE COTTON 40T ET (DLF,HYF,IEF)

GO EXCEL L18 (SOD)(CHB)(DLF,HYF,IEF)
PURPLE MARILYNNE 9M (DLF,HYF,IEF)
LAGRAND RELOAD 80P ET (SOD)(CHB)(DLF,HYF,IEF)
CRR D03 COTTON 356 (DLF,HYF,IEF)

RST TIMES A WASTIN 0124 (SOD)(CHB)(DLF,HYF,IEF)
PRCC MISS BREEZE 424B ET
43536821 GKB JKL 146 BREEZE B060 ET (DLF,HYF,IEF)

CRR ABOUT TIME 743 (SOD)(DLF,HYF,IEF)
RST MS 1000 BLAZER 2029 (DOD)(DLF,HYF,IEF)
DM BR L1 DOMINO 146 (SOD)(DLF,IEF)
GKB 9012Y BREEZE B421 (DLF,IEF)

CE	BW	WW	YW	DMI	SC	SCF	MM	M&G	MCE
-3.0	4.0	61	100	0.4	0.8	13.6	17	47	-0.2
MCW	UDDR	TEAT	CW	FAT	REA	MARB	BMS	BIIS	CHBS
116	1.20	1.20	73	-0.041	0.54	-0.07	310	372	113

- Sired by the National Champion "Downtown Avenue", and backed by the Lady Time cow family at Colyers. We purchased this female from GKB. Sells bred to C Spot On 6128 ET..
- Lot 57A: Heifer calf born May 7, 2019, sired by PRCC OHB DM 414 Wav Eagle 6917.



Lot 58 — GKB JKL B123 Lady Avenue 81B



GKB JKL B123 LADY AVENUE 81B

43510407 — Calved: 3/24/14 — Tattoo: LE 81B

GKB DOWNTOWN B627 ET (DLF,HYF,IEF)
GKB PRCC DOWNTOWN AVENUE ET (DLF,HYF,IEF)
43225838 BK MS PURE GOLD 0128 (DLF,HYF,IEF)

BR MOLER ET (CHB)(DLF,IEF)
GKB MISS PURE GOLD B239 ET (DLF,HYF,IEF)
C-S PURE GOLD 98170 (SOD)(CHB)(DLF,HYF,IEF)
BK MISS PACER 0016

CRR ABOUT TIME 743 (SOD)(DLF,HYF,IEF)
C LADY TIME 1158
43176443 C MS HARLAND 9018

THM DURANGO 4037 (SOD)(DLF,HYF,IEF)
CRR D03 CASSIE 206 (DLF,HYF,IEF)
CJH HARLAND 408 (SOD)(DLF,HYF,IEF,MSUDF)
C MS PURE GOLD 4049 (DOD)

CE	BW	WW	YW	DMI	SC	SCF	MM	M&G	MCE
-1.9	4.7	48	76	-0.3	0.7	11.0	22	45	0.5
MCW	UDDR	TEAT	CW	FAT	REA	MARB	BMS	BIIS	CHBS
97	1.00	0.90	59	-0.041	0.42	-0.11	267	311	105

- We selected this female from Ochsner Herefords in Wyoming. We are retaining a daughter in our herd. Y85 is a very maternal female that will be a front pasture cow. She has been exposed to C Spot On 6128 ET from May 9th to August 1, 2019.
- Lot 58A: Heifer calf born March 15, 2019, sired by CRR 028X Roll Tide 612.



Rhett J. Lowderman
309-836-7355 • Cell 309-225-5106
rjlowderman926@gmail.com • www.lowderman.com

Selling the Right to Flush



SRH Miss Kitty 1001 ET "Lady Gaga" —
Dam of Poker Face

RJL LCC Miss Poker Face 5C ET



SRH MISS KITTY 1001 ET (DLF,HYF,IEF)

P43088982 — Calved: 1/5/10 — Tattoo: RE SRH/ LE1001

GH NEON 17N (SOD)(CHB)(DLF,HYF,IEF,MSUDF)
UPS TCC NITRO 1ET (SOD)(CHB)(DLF,HYF,IEF)
P42827386 LCC TWO TIMIN 438 ET (DLF,HYF,IEF)

GH DIFFERENCE BRITISHER 45L
GH SIR SIMBA LASS 107K
REMITALL ONLINE 122L (SOD)(CHB)(DLF,HYF,IEF)
RST ROF REBA 28H

AB DAYTONA 6008 2032 ET
4C 511 DAYTONA MISS 661 (DLF,HYF,IEF)
P42830388 4CMS GEORGIA PROPHETC511

SHF INTERSTATE 20X D03 (SOD)(DLF,HYF,IEF)
THM LASSIE DOMINO 6008
BIG T CURIOUS GEORGE 27
TMR PROPHETESS P909

CE	BW	WW	YW	DMI	SC	SCF	MM	M&G	MCE
0.2	4.6	53	92	-0.1	0.6	1.4	14	40	-0.6
MCW	UDDR	TEAT	CW	FAT	REA	MARB	BMS	BIIS	CHBS
115	1.00	0.90	61	-0.002	0.32	0.00	128	181	106

- Selling the Right to Flush of SRH Miss Kitty 1001 ET "Lady Gaga" owned by Rhett J. Lowderman.
- Terms of Flush: Buyer is guaranteed six (6) embryos with a 2-pregnancy guaranty, if put in by a certified Technician/Embryologist. If the flush does not result in six (6) transferable embryos, then seller will provide additional embryos to equal six (6). At the same token, if the process does not result in three (3) 60-day pregnancies, then seller owes buyer additional embryos until buyer has three (3) 60-day pregnancies. Buyer is responsible for flushing and transfer costs. As seller is guaranteeing three (3) 60-day pregnancies, seller receives any non-freezable and all embryos over eight (8).

Donor Dam: LCC PATTON KIWI 116 ET

60A

Three (3) Embryos
Sire: **UPS SENSATION 2296 ET**
Dam: **LCC PATTON KIWI 116 ET**

60B

Three (3) Conventional Embryos
Sire: **B&C STOCK OPTION 6026D ET**
Dam: **LCC PATTON KIWI 116 ET**

60C

Four (4) Sexed heifer Embryos
Sire: **/S MANDATE 66589 ET**
Dam: **LCC PATTON KIWI 116 ET**

60D

Special Lot
• This surprise lot will consist of a basket style offering of premier embryos consisting of several different genetic matings. Information will be available on the day of sale.

61

Please Note: There are steer calves that are cataloged with their dams and will be offered separately and split during the cow-calf pair offering.

Steers

Steer

61A

Horned — Calved: 3/1/19
Sire: **PERKS 0003 EASY MONEY 4003**
Dam: **SULL TCC MS HARLEY 310 ET**



LCC Patton Kiwi 116 ET



Lot 61

Terms and Conditions

Terms of sale: Cash or check. All purchases will be required to be settled for on the day of the sale, prior to release. The owners must agree upon all other arrangements. No animal will be transferred until full payment is received. Interest on unpaid purchases will be equal to 18% per year.

Location of the sale and air service: Sale will be held at the Lowderman Auction Facility and Indoor Sales Pavilion located along Hwy. 136, 2 miles west of Macomb, Ill. Macomb is conveniently located in West Central Illinois, approximately 30-45 minutes east from the Illinois/Missouri/Iowa borders. Furthermore, Macomb is approximately one hour from the Quad Cities, Springfield and Peoria, Ill., or 2 ½ hours from St. Louis, Mo., each serviced by major airlines.

Viewing of cattle: All sale animals will be available for viewing during the entire day prior to the sale on Saturday, Sept. 19, 2015.

Rules of the sale: Each animal will be sold to the highest bidder. The auctioneer shall settle any or all disputes. Any announcements made from the auction block shall take precedence over any printed material in the book or supplemental sheets furnished on sale day. All animals in this sale will become the immediate property of the breeder once they are sold. We ask that all buyers recognize this fact of ownership or recommend that the buyers insure their animals prior to leaving the sale.

Bids: For those who wish to participate in the sale and are unable to attend, you may contact any one of the owners or sale staff members to represent you in the bidding. You will need to realize this will be a binding agreement between you and the person representing you. You can be assured all requests will be handled professionally and in complete confidence. We recommend you make arrangements prior to the start of the sale with one of the owners or sale staff members so you will be assured participation.

Registration and EPDs: Each animal's registration paper will be transferred to the new owner(s) at the seller's expense. All calves born after the sale are to be registered by the new owner(s). Proper breeding statements will be signed by the seller for the buyer to use in registering calves born after the sale. The buyer will be responsible for obtaining AI certificates of service to register calves born by sires not owned by the sellers. The EPDs reported and shown are the latest provided by the American Hereford Association.

Health: Each owner has implemented and maintained a strict vaccination and health program for their herd. Each animal selling will have the proper papers for interstate transportation. Virtually all females in the sale have been calfhood vaccinated.

Liability and insurance: All persons attending the sale and related functions do so at their own risk. Each owner and the Lowderman Auction Company assume no liability, legal or otherwise, for any accident which may occur. Insurance for purchases will be available on the day of the sale.

Breeding guarantee: All cattle in this sale are guaranteed in accordance with the rules and regulations set forth by the American Hereford Association. Any females represented to be pregnancy checked safe is guaranteed to be pregnant at the time of this sale. All females safe in calf or with a calf at side are considered breeders with no further guarantee. All females who have been serviced but not checked safe in calf carry no guarantee on this breeding. Each owner can guarantee a service to this same breeding at a later date after the sale, providing it involves one of his or her active herd sires.

Flush, embryo and donor dam guarantees: Please refer to those specific lots within this book for the individual terms and conditions pertaining to embryos, frozen eggs, flushes and donor cows.

Trucking: At the buyer's request, we will be happy to assist in making arrangements for delivery of cattle after the sale.



The Lowderman Family
 P.O. Box 488
 Macomb, IL 61455

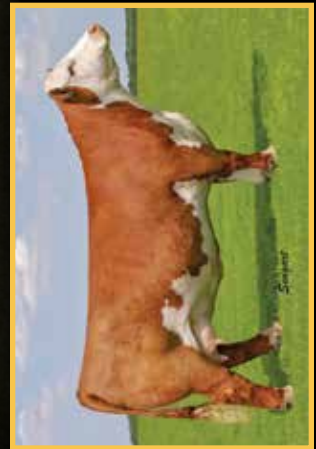
LOWDERMAN CATTLE COMPANY
ILLINOIS Top Cuts 2019
VOLUME XVI



LCC Patton Kiwi 116 ET — Lot 1

Swigard

**FEATURED PROVEN DONOR
 SELLING FULL INTEREST & PROGENY!**



JB Remetee 213 — Featured Donor!



Lot 2A — LCC 6026D Kiwi 21G ET
 Kiwi Family



Lot 5A — LCC Front N Center 27G ET
 Remetee Family