

# 2014 Annual Meeting Planned

**AHA members will meet in Kansas City to conduct Association business.**

Members of the American Hereford Association (AHA) will be in Kansas City, Mo., Oct. 31 through Nov. 2 for the 2014 Annual Meeting.

Kansas City Marriott Downtown, 200 West 12th Street, will host the event this year.

Friday afternoon an educational forum will kick off the weekend at the Marriott, followed by a "Hereford Honoree" reception. The educational forum will include highlights of the Hereford Genetic Summit as well as AHA updates.

During the Honoree Reception, this year's Hereford Heritage Hall of Fame and Hereford Hall of Merit recipients will be recognized as well as the Hereford Youth Foundation of America (HYFA) scholarship

winners. During the reception, a cash bar and hors d'oeuvres will be available.

### Saturday highlights

Saturday, the Annual Membership Meeting, which is open to the public, will start at 9 a.m. Association members selected 143 delegates to conduct the Association's business and to elect three members to serve on the AHA Board of Directors.

The four Board candidates are Pete Atkins, Tea, S.D.; Jim Mickelson, Santa Rosa, Calif.; Kevin Schultz, Haviland, Kan.; and Bob Thompson, Rolla, Mo. Candidate profiles are on Page 53, and a list of delegates starts on Page 55.

The Association's Annual Report will be presented and

distributed during the Annual Membership Meeting along with other reports on activities within the Association, Hereford Publications Inc., Certified Hereford Beef (CHB) LLC, National Hereford Women (NHW) and HYFA.

Buses will be available to shuttle attendees to the American Royal complex for the Ladies of the Royal Sale and the junior Hereford show.

The sale starts at 2 p.m. followed by the junior Hereford show that will begin at 5 p.m. at the American Royal complex. The junior show judge will be Blake Bloomberg, Stillwater, Okla.

### Herefords in the ring

Sunday the National Hereford Show will begin at 8 a.m. in

Hale Arena at the American Royal complex.

Between the female and bull shows, 2013-14 National Show Award winners will be recognized. Prior to the selection of the champion bull, the 2014-15 National Hereford Queen will be crowned.

The National Hereford Show will be judged by Kevin Hafner, Yukon, Okla. For those who can't make the trip to Kansas City, show results will be available online at [Hereford.org](http://Hereford.org).

NHW will be hosting activities throughout the weekend. See "Don't Miss NHW Events at the American Royal" on Page 20, for more information. **HW**

## Schedule of Events

*(subject to change)*

### Friday, October 31

2 p.m. **Educational Forum**  
Kansas City Marriott Downtown

2 p.m. **National Hereford Women (NHW) board meeting**  
Kansas City Marriott Downtown

6 p.m. **Hereford Honorees Reception,**  
Kansas City Marriott Downtown

### Saturday, November 1

9 a.m. **Annual Meeting**  
Kansas City Marriott Downtown

Noon **NHW Annual Meeting**  
Kansas City Marriott Downtown

2 p.m. **Ladies of the Royal Sale**  
American Royal Wagstaff Sale Arena

5 p.m. **Junior Hereford Show**  
American Royal Hale Arena

### Sunday, November 2

8 a.m. **National Hereford Show**  
American Royal Hale Arena

## Headquarter Hotel

### Kansas City Marriott Downtown

200 W. 12th St.  
Kansas City, MO 64105  
816-421-6800  
Rate: \$99

Cutoff date: Oct. 1  
To make a reservation 1-877-303-0104.

All reservations must be made on or before the cutoff date. Ask for the American Hereford Association rate when making reservations.



### Enjoy a CHB steak in KC

While in Kansas City, Hereford breeders can enjoy a Certified Hereford Beef (CHB®) meal at LaBodega. Located at 703 Southwest Blvd., Kansas City, Mo., you can call 816-472-8272 or visit [opentable.com](http://opentable.com) to make reservations. You can also find more information about the restaurant online at [labodegakc.com](http://labodegakc.com).

## NHW announces National Hereford Queen candidates

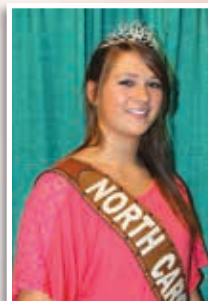
During the Annual Meeting weekend 10 state Hereford queens will vie for the title of National Hereford Queen. On Sunday the new queen will be crowned during the National Hereford Show at the American Royal complex. Pictured below are this year's candidates.



**Abby Anderlik**  
Dayton, Iowa



**Kagny Collins**  
Flanagan, Ill.



**Courtney Eudy**  
Harrisburg, N.C.



**Briana Katzenberger**  
Monroe, Wisc.



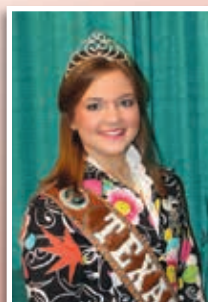
**Jena McCall**  
Emory, Texas



**Bailey McKay**  
Marysville, Kan.



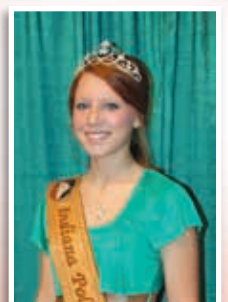
**Katie Nolles**  
Bassett, Neb.



**Hannah Schneider**  
Aquilla, Texas



**Jordan Spindle**  
Moriarty, N.M.



**Shelby Zink**  
Oxford, Ind.



# Four Contending for AHA Board

The American Hereford Association (AHA) nominating committee has announced four Hereford breeders are vying for positions on the AHA Board.



## Peter Atkins

Peter "Pete" Atkins and his wife, Laura, and three sons, Scott, Craig and Paul, own and operate Atkins Herefords, Tea, S.D.

Pete was raised on a diversified cattle, hog and crop farming operation in southeastern South Dakota, where he and his wife live today. His parents, Alvin and Maguerite Atkins, purchased the family's first Herefords in 1971 and have had as many as 100 registered cows at their peak in size.

The Atkins family started collecting and reporting performance data in 1975 and have used artificial insemination (AI) since the late 1970s and embryo transfer (ET) for the past nine years.

Atkins Herefords' goal is to produce high-performing cattle with moderate birth weights that have eye appeal and will work for the commercial cattleman. Emphasis is placed on raising sound, trouble-free cattle, and udder quality in the cow herd is stressed heavily. Pete thinks it is important to use a balance of all tools available when selecting breeding stock.

Today, Atkins Herefords consists of a base herd of 25 registered cows, and it produces an additional 20 to 50 ET calves each year. Together with their good friends and partners, the Jerry Delaney family, the Atkinses market bulls through a bull sale each year, and every other year they market females through a fall production sale.

In the year between female production sales, females are offered at their fall preview event, which includes a customer appreciation dinner and previews that year's calf crop along with the Denver prospects. Atkins Herefords consigns bulls and females to the Mile High Night Sale and exhibits carloads of bulls and pens of heifers with the Delaneys each year in Denver.

Pete has served as a board member and president of the South Dakota Hereford Association. He is a board member for the John Leibel Memorial Scholarship and has been the chairman of the Sioux Empire Farm Show Hereford sale committee since its inception 14 years ago. He has served as a voting delegate at the American Hereford Association (AHA) Annual Meeting and is a former field representative for the American Polled Hereford Association.

He is also a board member for the 4-H Livestock Industry Trust Fund of South Dakota and a member and past church councilman of the Trinity Lutheran Church in Tea. Pete is also co-owner of Westra Atkins Land & Auction.



## Jim Mickelson

Hereford breeder Jim Mickelson and his family own and operate Sonoma Mountain Herefords in the wine country of northern California.

The Sonoma Mountain herd currently includes 175 head of registered Hereford cows.

In 2003, Sonoma Mountain Herefords got its start with the purchase of the remainder of the Kunde Herefords herd, which dated back to the 1940s.

Jim and his wife, Marcia, oversee the operation, while their son, Bobby, along with his wife, Heidi, is in charge of day-to-day activities and is the ranch's herdsman. Jim and Marcia's daughter, Jamie, is involved as well and is responsible for management of the Hereford show string. The Mickelson family shows cattle at local, regional and national shows including the National Western Stock Show in Denver.

Bulls are marketed each year as long yearlings or 2-year-olds in the ranch's production sale, held in conjunction with Lambert Ranch for the past eight years. Select bulls are consigned to the Red Bluff Bull Sale, where Sonoma Mountain has had several champion and reserve bulls. Just recently the Mickelsons have begun marketing their females to commercial and registered breeders.

Sonoma Mountain Herefords has been a Gold Total Performance Record (TPR) Breeder for several years. In 2007 the operation was selected as the California Beef Cattle Improvement Association Seedstock Producer of the Year.

To educate the public, the Mickelsons operate sustainable tours in conjunction with their winery operation so that the public can see firsthand how their cattle are raised, including during calving season.

Jim also serves as president of Kunde Family Vineyards, is on the Kunde Family Winery board of directors, and is president and chief operating officer of Jerry and Don's Yager Pump and Well, a water well pump and drilling business, which he purchased in 1984.

Jim has served on the AHA nominating committee and recently was chosen as one of the spokespersons for the Certified Hereford Beef (CHB) program.

Jim's state and regional Hereford activities include currently serving as the California-Nevada Hereford Association president and participating on the polled and horned merger committee. He was a California-Nevada Junior Hereford Association advisor for several years and currently serves on the Western States Hereford Association show and sale committee.



## Kevin Schultz

Kansas Hereford breeder Kevin Schultz, Haviland, Kan., manages his family's Sandhill Farms, a seven-generation, diversified farming and cattle operation. His family has a

deep history in the Hereford business as Hereford cattle have been bred on their land since the mid-1900s.

The farming operation consists of dryland and irrigated corn, soybeans and wheat.

The cow herd includes about 300 cows. With the maturity of Conservation Reserve Program (CRP) acres, the Schultz family is in an expansion phase. Through the use of ET, approximately 200 of the calves are registered, and the balance are purebred commercial. The commercial cows have been purebred Hereford since the mid-1940s.

The family has fed out its steers at commercial feedlots for the past 15-20 years. Feedlot performance data, as well as individual carcass data, have been collected and tracked.

The registered program was started after Kevin graduated from Kansas State University in 1986, and from then until 2008, all Sandhill bulls were sold private treaty. In 2008 the family started a spring bull sale. All 5-year-old cows that are pregnant with heifer calves sell in that sale. The Schultz family also sells commercial open heifers and customer-owned black baldie heifers each year in the sale.

Sandhill genetics have been part of the National Reference Sire Program (NRSP) and the Circle A Ranch heterosis project. Kevin uses these programs to increase the accuracy and predictability of his bulls and to identify outliers that will help move the breed in the desired direction. Sandhill Farms is a Gold TPR Breeder; the family has been whole-herd reporting since the beginning of its registered cattle program.

Kevin's goals are to provide genetics that will enhance customer profits and satisfaction. In the past two sales, 70% of the bulls were sold to commercial buyers.

For the last 19 years, Sandhill Farms has exhibited a pen of bulls at the National Western Stock Show in Denver.

Kevin was a longtime member of the Kansas Polled Hereford Association, serving multiple terms on the board and as president. He is a current member of the Kansas Hereford Association. In 2004 he was AHA's nominee to the National Cattlemen's Beef Association (NCBA) Young Cattlemen's Conference. Sandhill Farms was honored with the Beef Improvement Federation (BIF) Seedstock Producer of the Year Award in 2010.

Kevin has served on numerous local and state boards, being an officer in most. These include church, school, groundwater management, Extension, Farm Bureau, the Kansas Livestock Association and others.

Kevin and his wife, Vera, have three children — Brooke, Tyler and Courtney.



## Bob Thompson

Involved in production agriculture all his life, Bob Thompson along with his wife, Gretchen, own and operate Glengrove Farm near Rolla, Mo.

The farm was a registered Jersey dairy farm from 1926 until the mid-1960s. Bob's family has owned the land since 1903, and the Thompsons started their registered Hereford herd in 1974.

They began performance testing through the University of Missouri (MU) livestock Extension service and the APHA in 1976. The current Glengrove herd consists of approximately 50 cows and has been developed through the use of AI and, in recent years, ET. Their production goals center on producing diversified genetics that will meet the needs of their purebred and commercial customers and perform on fescue grass.

The Thompsons market cattle through the Show-Me Hereford Classic sales in April and November. They also consign to the "Missouri Opportunity" state sale. In addition to the Hereford cattle, they own a corn and soybean row cropping operation in north Missouri near Princeton.

Bob and Gretchen are also part owners in a small investment group that has recently broken ground on a new backgrounding feedlot to add value for local feeder calf producers.

Bob is a past president of the Missouri Hereford Association (MHA) and was inducted into the MHA Hall of Fame in 2011. Glengrove Farm was honored with the MHA Purebred Breeder of the Year award in 2012. He and Gretchen donate in support of the Missouri Junior Hereford Association, the Hereford Youth Foundation of America and National Hereford Women.

Bob is also involved in his community. He currently serves as Missouri State Fair Foundation chairman. He's on the MU College of Ag's Foundation board, and MU's research farm advisory board. He and Gretchen belong to the First United Methodist Church in Rolla. He's a past president of the Rolla Area Chamber of Commerce and the Rolla Kiwanis Club and a former chairman of the local Boy Scouts of America district and vice president and finance chairman of the Ozark Trails Council.

He serves on the board of directors for the Central Federal Savings and Loan in Rolla. He is a former president and CEO of the U.S. Bank in Rolla and a former chief financial officer and agriculture director of the Missouri Enterprise Business Assistance Center.

Bob is a member of the Missouri 4-H Foundation Heritage League and Missouri FFA Alumni Foundation. He's a former member of the Governor's Advisory Council on Agriculture and was a recipient of the Governor's Award for Agriculture Achievement in 2012.

He served in the U.S. Army in Vietnam and was awarded a Bronze Star.

# Candidate Q&A

All four candidates had a chance to respond to three questions. Below are the questions and the candidates' responses.

## Why are you running for the Board?

### Atkins

Anyone who knows me knows that I have Herefords in my blood. I have a passion for the breed and would be honored to help guide our Association during this time when we have some great opportunities ahead of us.

I bring a broad range of experience, being an owner and day-to-day manager of our own herd in addition to working with our partners hosting production sales and exhibiting and marketing cattle at the national level.

I also have business and finance experience, having managed banks. In addition, I worked for the American Polled Hereford Association in the mid-1980s and today own a farm real estate and auction company. Over the years I have seen Herefords at the top and near the bottom in the eyes of commercial producers and look forward to helping continue our current growth and success.

### Mickelson

Serving on the Board is a great opportunity to share ideas and network with other members. My family and I love raising Hereford cattle and being involved with the industry.

### Schultz

I have a genuine interest and affection for the members, our cattle and the future of the breed.

### Thompson

I think it is safe to say we have never seen better times for Hereford cattle production and marketing. I have a passion for Hereford cattle and especially enjoy friends and acquaintances within the industry.

I have no specific agenda in mind other than applying whatever experience I may have toward dealing with opportunities and challenges facing the Association. I do have a particular interest in participating in the continued development of policies and initiatives that will help assure the best business practices and financial objectives for the improvement of the AHA.

I would enjoy working with other directors and management, first to learn the current issues facing the AHA and then to help insure that policies are in place for breeders to continue to receive the best services and value that the AHA can provide.

I believe the proper role for a director is to help establish policies, goals and accountability in agreement with management and then to leave operating decisions to Association executives.

I have the time and desire to represent member breeders on the Board of Directors and would be honored to do so if elected.

## What are some goals or ideas you have for the AHA?

### Atkins

The primary purpose of the AHA is to promote the Hereford breed and to support its members. I believe that there are opportunities in the following areas:

- Providing registration and other services to the membership as efficiently as possible.
- Promoting Herefords through the growth of Certified Hereford Beef (CHB).
- Educating commercial cattlemen to the benefits of using Hereford genetics in their operations.
- Expanding the use of proven genetic evaluation tools to promote breed improvement.

### Mickelson

My goal is to listen to the membership and to govern in a way that benefits the membership as a whole. Horned and polled cattle are all Herefords. CHB is a program that is promising and continues to grow but needs renewed promotion emphasis if we are to continually develop this marketing tool.

### Schultz

Each member has a reason for being in the breed. It is my goal to listen to the members and help them achieve those goals. I would like to continue to provide new tools and to make continual improvements to the tools that the members need to achieve their breeding goals.

### Thompson

I think Board goals should be formed after listening to member breeders and other partners. I applaud the Association for sponsoring the Hereford Genetic Summit in Springfield, Mo., which helped accomplish a better sense of direction for the breed.

I would support most any activity from conferences to surveys that would improve communications among all sectors from producer to consumer.

I believe junior programs are particularly important as our youth are vital to the success of our breed and other agriculture endeavors. I think we have an opportunity to grow our junior program for both rural and urban youth because our industry is providing better opportunities for careers and investment as profits improve.

I strongly support an initiative to improve efficiency and quality services, which has already been put in place by the Board and management with significant progress made. From my own experience, I know this is a long-term, continuous improvement process and can pay big dividends for member breeders and the AHA.

## What is the biggest issue the AHA will face in the next five to 10 years and how does the Board prepare to face this issue?

### Atkins

I think the biggest issue is maintaining and improving the quality of cattle in the breed. We are in uncharted waters for prices in the beef industry today and Herefords are riding the wave, while gaining momentum and popularity among commercial cattle producers.

As breeders we need to capitalize on this opportunity but also need to keep the long term in mind. Now more than ever the quality of what we put into the hands of commercial producers is crucial.

Many cattlemen are coming back to Herefords for the first time in years, and we need to provide them with a high-quality product and to stand behind what we sell. We may only get one chance!

Commercial producers with black cows need genetics that will complement and cross well with their herds. We have a great opportunity to fill that need. Maintaining and improving quality and raising Herefords that will work for the commercial producer are going to be key points to insure the future of our breed.

### Mickelson

I think the biggest issue will be meeting the demand for Hereford-bred cattle. The Association is financially sound and CHB is gaining market share.

The Association is doing a great job with the marketing materials and programs currently being offered. The Hereford Genetic Summit is one of the programs that will give producers the tools they need to be more competitive.

Having the inventory to meet the demand is vital, and we need to continue not only promoting and retaining the established breeder but also cultivating the youth in the association as well as in the cattle industry.

### Schultz

One of our biggest issues will be to provide enough quality breeding stock to the commercial cattlemen to meet growing demand of our Hereford genetics. This can be achieved by listening to the members as to what selection tools they need to make quality improvement decisions. Then, within budget constraints, we need to work with industry to refine and make new tools that help our members reach their goals.

### Thompson

In my opinion, the biggest overall issue is sustainability and growth of value and market share for Hereford cattle. Times are really good now, but there will continue to be opportunities and challenges to meet the demand for food in what is projected to be a doubling of the world's population by 2050.

The question is: How do we keep the momentum up and capture an even larger share of the seedstock business?

In my view, we will have to stay on the leading edge of genetic research and evaluation. More and even better cattle will be needed to meet the demands of our customers and consumers. I think we will also need to continue to expand our strategic partnerships to process and to market our product. All of these things will need to be done efficiently and with quality both on the production side and through AHA services to meet or beat competitors in the market place.

Last but not least, it will require even more investment and leadership in the industry. Fewer young people have been returning to production agriculture in recent years. However, as they see more opportunities, that trend can change. We're already seeing more "smart money" invested in agriculture because it is one of the few economic engines that is on the upswing. I believe we have the opportunity to deliver a positive message to more young people, to help them develop life skills and to inspire them through our junior programs to enter or to continue in the cattle industry.



# Delegates

## ALABAMA

Two delegates to be determined.

## ARKANSAS

**Craig Bacon**  
Siloam Springs, Ark.  
**Scott Sullivan**  
De Queen, Ark.

## CALIFORNIA

**Steve Lambert**  
Lambert Ranch  
Oroville, Calif.  
**Jim Mickelson**  
Sonoma Mountain Herefords  
Santa Rosa, Calif.  
**Karl Blagg**  
Snow Mountain Ranch  
Grass Valley, Calif.

## COLORADO

**Kenneth Coleman**  
Coleman Herefords  
Westcliffe, Colo.  
**Jane Evans Cornelius**  
Coyote Ridge Ranch  
LaSalle, Colo.  
**Marshall Ernst**  
Ernst Herefords  
Windsor, Colo.

## IDAHO

**Guy Colyer**  
Colyer Herefords  
Bruneau, Idaho  
**Katie Colyer**  
Bruneau, Idaho  
**Sam Shaw**  
Shaw Cattle Co. Inc.  
Caldwell, Idaho

## ILLINOIS

**Joe Ellis**  
Ellis Farms  
Chrisman, Ill.  
**Jack Lowderman**  
Lowderman Cattle Co.  
Macomb, Ill.  
**James Milligan**  
Milligan Herefords  
Kings, Ill.  
**Arlyn Rabideau**  
Clifton, Ill.  
**Mark Stephens**  
Stephens Hereford Farms  
Edinburg, Ill.  
One delegate to be determined.

## INDIANA

**Bruce Everhart**  
Everhart Farms  
Waldron, Ind.  
**Doug Gerber**  
Gerber Polled Herefords  
Richmond, Ind.  
**Jill Duncan**  
Able Acres  
Wingate, Ind.  
**Ted Hunt**  
Hunt Bros.  
Battle Ground, Ind.  
**Alice Timberlake**  
Floyd Timberlake & Sons,  
Pilot Wheel Ranch  
Mauckport, Ind.

## IOWA

**Sara Casteel**  
Casteel Polled Herefords  
Perry, Iowa  
**Steve Landt**  
Union, Iowa  
**Dave Wiese**  
Wiese & Sons  
Manning, Iowa

## KANSAS

**Craig Beran**  
B&D Herefords  
Clafin, Kan.  
**David Breiner**  
Mill Creek Ranch  
Alma, Kan.  
**Tom Granzow**  
Granzow Herefords  
Herington, Kan.  
**Kevin Jensen**  
Courtland, Kan.  
**Glenn Oleen**  
Oleen Cattle Co.  
Falun, Kan.

**Kevin Schultz**  
Sandhill Farms  
Haviland, Kan.

## KENTUCKY

**Andrew Matheny**  
Mays Lick, Ky.  
**Tony Staples**  
TK4 Herefords  
Brandenburg, Ky.  
**Ron Thomas**  
Thomas Farm  
Richmond, Ky.

## LOUISIANA

Two delegates to be determined.

## MICHIGAN

**Dave Bielema**  
Ada, Mich.  
**Nancy Keilty**  
Cottonwood Springs Farm  
Cedar, Mich.

## MINNESOTA

**Ross Carlson**  
Carlson Farms  
Murdock, Minn.  
**James Hanson**  
Comfrey, Minn.  
**David Kitchell**  
Dakitch Hereford Farm  
Ada, Minn.

## MISSISSIPPI

**Bill Darnell**  
Unity Creek  
Caledonia, Miss.  
One delegate to be determined.

## MISSOURI

**Jim Bellis**  
Aurora, Mo.  
**Larry Day**  
Day's Family Farm  
Pilot Grove, Mo.  
**Frank Flaspohler**  
Fayette, Mo.  
**Marty Lueck**  
Journagan Ranch-Missouri State  
University  
Mountain Grove, Mo.

**Jim Reed**  
Reeds Farms  
Green Ridge, Mo.

**Charles Smail**  
Ravine Farms Trust  
Skidmore, Mo.

**Ken Staten**  
Lilac Hill  
Fayette, Mo.

**Bob Thompson**  
Glengrove Farm  
Rolla, Mo.

## MONTANA

**Kelsy Cooper**  
Cooper Hereford Ranch  
Willow Creek, Mont.  
**Jack Holden**  
Holden Herefords  
Valier, Mont.

## Fred McMurry

McMurry Cattle  
Billings, Mont.

## Tom Sparks

Plevna, Mont.

## Dale Venhuizen

Churchill Cattle Co.  
Manhattan, Mont.

## NEBRASKA

**Doug Bolte**  
Blueberry Hill Farms Inc.  
Norfolk, Neb.

## Dave Goertz

Double Heart Diamond Cattle  
Berwyn, Neb.

## Keith Lapp

Hayes Center, Neb.

## Scott McGee

Valley Creek Ranch  
Fairbury, Neb.

## Ronny Morgan

Morgan Ranch Inc.  
Burwell, Neb.

## Arthur Olsen

Olsen Ranches Inc.  
Harrisburg, Neb.

## John Ridder

Ridder Hereford Ranch  
Callaway, Neb.

## Ron Schutte

Alfred Schutte & Sons  
Guide Rock, Neb.

## Russ Tegtmeyer

Clarence Tegtmeyer & Sons  
Burchard, Neb.

## Joe Van Newkirk

Van Newkirk Herefords  
Oshkosh, Neb.

## NEW MEXICO

**Cliff Copeland**  
Copeland & Sons LLC  
Nara Visa, N.M.

## Bill King

Moriarty, N.M.

## NEW YORK

**Timothy Dennis**  
Glade Haven Herefords  
Penn Yan, N.Y.

## Theo Kriese

Spring Pond Farm  
Cato, N.Y.

## NORTH CAROLINA

**James Davis**  
Terrace Farms  
Lexington, N.C.

## Michael Mericka

Triple M Ranch  
Browns Summit, N.C.

## NORTH DAKOTA

## Roger Stuber

Stuber Ranch  
Bowman, N.D.  
Three delegates to be determined.

## OHIO

**Jeff Harr**  
J&L Cattle Services  
Jeromesville, Ohio

## Norman Starr

NS Polled Herefords  
Shaker Heights, Ohio

## OKLAHOMA

**Richard Gebhart**  
Claremore, Okla.

## Jimmie Johnson

Red Hills Polled Herefords  
Clinton, Okla.

## Leon Langford

Langford Herefords  
Okmulgee, Okla.  
**JH Lents**  
Indiahoma, Okla.

## John Loewen

Loewen Herefords  
Waukomis, Okla.

## Warren Sidwell

W&J Cattle Co.  
Chelsea, Okla.  
One delegate to be determined.

## OREGON

## David Bird

Bird Herefords  
Halfway, Ore.

## Bob Harrell

Harrell Hereford Ranch  
Baker City, Ore.

## George Sprague

Bar One Ranch  
Eugene, Ore.

## PENNSYLVANIA

## Douglas Howe

Deana Jak Farm  
Wagontown, Pa.

## Paul Slayton

Bedford, Pa.

## SOUTH CAROLINA

## Norris Fowler Jr.

Fowken Farm  
Jonesville, S.C.

## SOUTH DAKOTA

## Pete Atkins

Tea, S.D.

## Phil Eggers

Eggers Southview Farms  
Sioux Falls, S.D.

## Keith Fawcett

Fawcetts Elm Creek Ranch  
Ree Heights, S.D.

## Jerome Ollerich

Ollerich Bros Herefords  
Clearfield, S.D.

## Vern Rausch

Rausch Herefords  
Hoven, S.D.

## Steve Repenning

Blacktop Farms  
Mitchell, S.D.

## Richard Wettlaufar

Winfred, S.D.

## Troy Williamson

Spring Water Polled Herefords  
Garretson, S.D.

## TENNESSEE

## Christopher Anderson

Manchester, Tenn.

## Billy Ashe

Selmer, Tenn.

## David Parker

Bradyville, Tenn.

## Eric Walker

Walker Polled Hereford Farm  
Morrison, Tenn.

## TEXAS

## Dale Barber

Barber Ranch  
Channing, Texas

## Terri Barber

Austin, Texas

## William Breeding

B&C Cattle Co.  
Miami, Texas

## Gary Buchholz

Waxahachie, Texas

## Jackie Chastain

Ft. Worth, Texas

## Stephen Coates

Coates Ranch Co.  
Mertzson, Texas

## Paul Funk

Spearhead Ranch  
Copperas Cove, Texas

## Jordan Glaze

Gilmer, Texas

**Lee Haygood**  
Indian Mound Ranch  
Canadian, Texas

**Joe Dan Ledbetter**  
Wheeler, Texas

**Keith Rogers**  
Hidden Oaks Ranch  
Hamilton, Texas

**Erick Schmidt**  
Gonzales, Texas

**Jay Wright**  
W4 Ranch  
Morgan, Texas  
*Two delegates to be determined.*

**UTAH**  
*One delegate to be determined.*

**VIRGINIA**  
**Robert Kube**  
Fauquier Farm  
Warrenton, Va.  
**Robert Schaffer**  
Deer Track Farm  
Spotsylvania, Va.

**WEST VIRGINIA**  
**Michael Taylor**  
Cottage Hill Farm  
Petersburg, W.Va.  
**Mike McDonald**  
McDonalds Polled Herefords  
Jane Lew, W.Va.

**WISCONSIN**  
**Steve Folkman**  
Ixon, Wis.  
**Gerald Huth**  
Huth Polled Herefords  
Oakfield, Wis.

**Gary Reinke**  
Gari Alan Farm  
Johnson Creek, Wis.

**WYOMING**  
**Jay Middleswarth**  
Middleswarth Herefords  
Torrington, Wyo.  
**Orson Perkes**  
Etna, Wyo.  
*One delegate to be determined.*

**FLORIDA/GEORGIA**  
**Hardy Edwards**  
Winterville, Ga.  
**Jonny Harris**  
Greenview Polled Hereford Farms Inc.  
Screven, Ga.

**Gary Hendrick**  
Marietta, Ga.  
**Thomas Mead Jr.**  
Mead Cattle  
Midville, Ga.

**NEVADA/ARIZONA**  
**Don Brumley**  
Brumley Farms  
Orovada, Nev.  
*One delegate to be determined.*

**NEW ENGLAND**  
**Herbert Holden**  
Double H Acres  
Broad Brook, Conn.

**UPPER ATLANTIC**  
*Two delegates to be determined.*

**NORTHWEST**  
**Joe Bennett**  
Connell, Wash.

**William Cox**  
Pomeroy, Wash.  
**Brian Gallagher**  
Gallagher Farms  
Enumclaw, Wash. **HW**